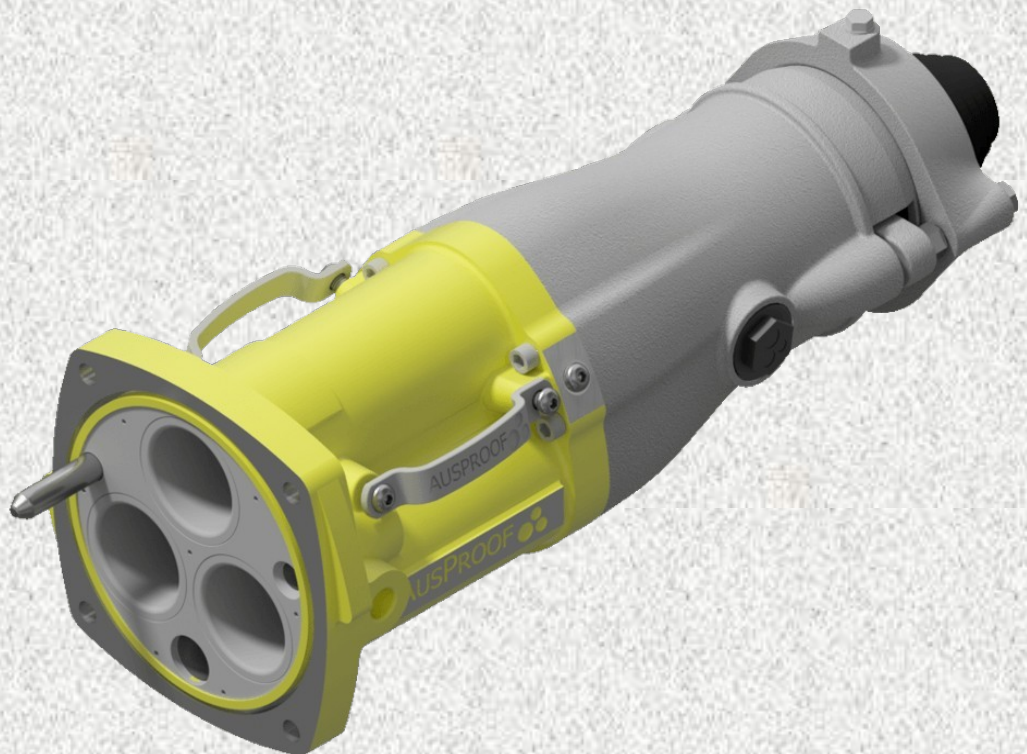




**6.6kV / 8.7kV  
800AMP Coupler and Adaptor  
Test Report**



*Pioneering the Difference.*

Theory 1.9.1	Developed by	Philip Marks
	DIN	RD_974
	Version	3



## Test Report

<b>DATE ISSUED:</b>	12 January 2024
<b>DEVICE TESTED:</b>	AusProof 6.6 kV / 8.7 kV 800 A Coupler
<b>RANGE NUMBERS:</b>	64BKA, 64BKAFO, 64BKAE, 8BU, 8BUFO, 8KA, 8KAFO, 8KAKEY, 8KAMT 8KAMTE, 8KAE
<b>CLIENT'S NAME:</b>	AusProof Pty Ltd 6 Shona Avenue Gladstone Queensland 4680 Australia
<b>CLIENT'S REFERENCE:</b>	Email: Clinton Taylor
<b>TEST SPECIFICATION:</b>	Client specification including references to AS/NZS 1300, AS/NZS 1299, C22.2 No 298, AS/NZS 1802, AS/NZS 2802 and IEEE 404
<b>DATE OF TEST COMPLETION:</b>	23 December 2022
<b>SUMMARY OF RESULTS:</b>	The sample device tested complied with the requirements of the above test specification.



All tests reported herein have been performed in accordance with the Laboratory's scope of accreditation, Accreditation Number: 42

IANZ Signatory: K Manson



Checked By: G I Dix



International Accreditation New Zealand (IANZ) has a Mutual Recognition Arrangement (MRA) with the National Association of Testing Authorities (NATA), Australia, such that both organizations recognize accreditations by IANZ and NATA as being equivalent. Users of inspection reports / certificates are recommended to accept inspection reports / certificates in the name of either accrediting body.

PowerLab Limited, PO Box 31034 Christchurch 8444 New Zealand, 5 Sheffield Crescent Christchurch New Zealand, [Info@powerlab.co.nz](mailto:Info@powerlab.co.nz). This Report must not be quoted except in full.

## Testing notes

### The following personnel were present during testing:

Laboratory staff: K Manson and G I Dix

### Tests Performed

Test number	Test	Standard/Clause	Test value
1	Phase to phase + earth AC 50 Hz 6 hours	C22.2 No. 298 AS/NZS 1299 AS/NZS 1300 AS/NZS 1802 AS/NZS 2802 IEEE 404	22 kV for 6 hours
2	Pilot to earth 50 Hz	AS/NZS 1300 AS/NZS 1299	1000 V for 1 minute
3	Impulse	AS/NZS 1300 AS/NZS 1299 AS/NZS 2802 IEEE 404 C22.2 No. 298	75 kV and 95 kV
4	Partial Discharge	AS/NZS 1300 AS/NZS 1299 C22.2 No. 298	Inception and extinction 10% greater than 5.03 kV, Max 100 pC
5	Ingress protection	AS 60529	IP68
6	Short circuit test (phase)	AS/NZS 1300 AS/NZS 1299 C22.2 No. 298	20 kA for 1.0 s
7	Bonding (earth) path current test	C22.2 No. 298	5.01 kA for 9 s
8	Temperature rise	ASNZS1300 ASNZS1299 C22.2 No. 298	800 A

### Test Laboratory Atmospheric Conditions

Temperature 20 ( $\pm 4$ ) $^{\circ}$ C.

Pressure 100 ( $\pm 5$ ) kPa

(Approximate height above local sea level is 30 m).

### Laboratory Equipment

Ferranti inverted Marx impulse generator configured with 3 stages rated at 100 kV, 0.24  $\mu$ F per stage;

Report Number: PL1792 6.6-8.7 kV Issue 3

Laboratory manufactured adjustable transfer, tail and front resistors;  
Laboratory manufactured impulse generator control and firing equipment;  
Haefely 600 kV peak capacitor voltage divider/chopping gap;  
Haefely 64M Impulse Peak Voltmeter;  
Manually set 25cm sphere-gap;  
Biddle balanced partial discharge detector 665700 (Zm, PDS)  
Biddle partial discharge system master calibrator 6617250  
Oscilloscope  
Haefely 2000 pF discharge free 200 kV capacitor (Ck).  
Hipotronics 150 kV 150 kVA ac dielectric test set  
Resistive voltage divider and true RMS indicator (Hipotronics KVM300)  
Fluke 287 DVM  
Tektronix TDS3034 Four Channel digitizing oscilloscope;  
11 kV/440 V short circuit transformer  
20,000/5 CT  
Laboratory constructed point on wave switch  
Inductors and Resistors  
Laboratory manufactured current viewing resistor; and  
Miscellaneous laboratory equipment including: assman hygrometer, barometer, and a mercury-in-glass thermometer.  
Agilent 34970A data acquisition system

### **Measurement Uncertainties**

Refer to the Laboratory accreditation details at [www.ianz.govt.nz](http://www.ianz.govt.nz) for information on measurement uncertainty.

### **Coupler test connection, terminations and fittings**

The sample coupler assemblies tested were terminated with Client supplied cables and fittings

Although these are required for testing, they are not considered to be part of the sample device tested.



## Test procedures, Results

### 1. AC Voltage withstand test (phase conductors)

The specified test voltage was applied between the specified conductors and the coupler body using a Hipotronics 150 kV 150 kVA ac dielectric test set operated from the laboratory mains supply. The voltage was measured using a resistive voltage divider and true RMS indicator (Hipotronics KVM300). A stopwatch was used to monitor time of application.

22 kV rms was applied between the conductors and the coupler body for a period of 6 hours.

During the high voltage test no disruptive discharges, - flashovers or insulation punctures were noted.

The insulation resistance was greater than 1 GΩ, each phase to earth.

**Result:**

**Complies**

### 2. AC Voltage withstand test (pilot conductors)

The specified test voltage was applied between the specified conductors and the coupler body using a Hipotronics 150 kV 150 kVA ac dielectric test set operated from the laboratory mains supply. The voltage was measured using a resistive voltage divider and true RMS indicator (Hipotronics KVM300). A stopwatch was used to monitor time of application.

1 kV rms was applied between the pilot conductor and the coupler body for a period of 1 minute.

During the high voltage test no disruptive discharges, - flashovers or insulation punctures were noted.

**Result:**

**Complies**

### 3. Partial discharge test

The specified test voltage was applied between the conductors and the coupler body using a Hipotronics 150 kV 150 kVA ac dielectric test set operated from the laboratory mains supply. The voltage was measured using a resistive voltage divider and true RMS indicator (Hipotronics KVM300).

Discharge levels were measured using a Biddle balanced bridge discharge detector. The bridge was balanced according to the bridge manufacturer's instructions. The measurements system was calibrated by injecting a known discharge between the conductor and the cable sheath. The system calibration was checked at 10 pC and at 100 pC. Background discharge levels were recorded. Discharge levels were measured using an oscilloscope and the bridge meter.

Report Number: PL1792 6.6-8.7 kV Issue 3

Background discharge level was less than 1 pC

	Voltage (kV)	Discharge Level
Inception	8.5	30 pC after inception
Extinction	8.2	< 1 pC after extinction

**Result:**

**Complies**

#### 4. Impulse test

A Ferranti impulse generator with a Haefley voltage divider and peak voltmeter was used. The wave shape was adjusted by means of interchangeable front and tail resistors to be within the allowed tolerances.

Ten impulses of each polarity were applied as specified in the Standard. Each impulse was monitored by digital comparison with a stored reference.

The applied impulse was monitored using a Tektronix digitising oscilloscope.

Wave shape was 1.0/43  $\mu$ s. Refer to oscillogram included in this report

The test voltage was 75 kV peak.

The test was then repeated with a test voltage of 95 kV peak

During the application the 75 kV impulses no disruptive discharges, flashovers or insulation punctures were noted.

**Result (75 kV):**

**Complies**

During the application the 95 kV impulses no disruptive discharges, flashovers or insulation punctures were noted.

Refer to Figure 1.

**Result (95 kV):**

**Complies**

## 5. Ingress Protection

Two sample couplers were assessed according to AS 60529 to determine compliance with IP 68.

CI 13.3	Ingress of Solid Objects Test (AS 60529)			P
Ingress Test Performed	Location of probe applied	Force applied (N)	Clearance measured	Verdict
Unit 1				
IP1X	Enclosure Ends, Cable Rubber Entry, Bungs, Cover Cap.	50	No entry/damage	P
IP2X	Enclosure Ends, Cable Rubber Entry, Bungs, Cover Cap.	30	No entry/damage	P
IP3X	Enclosure Ends, Cable Rubber Entry, Bungs, Cover Cap.	3	No entry/damage	P
IP4X	Enclosure Ends, Cable Rubber Entry, Bungs, Cover Cap.	1	No entry/damage	P
Unit 1				
IP1X	Enclosure Ends, Cable Rubber Entry, Bungs.	50	No entry/damage	P
IP2X	Enclosure Ends, Cable Rubber Entry, Bungs.	30	No entry/damage	P
IP3X	Enclosure Ends, Cable Rubber Entry, Bungs.	3	No entry/damage	P
IP4X	Enclosure Ends, Cable Rubber Entry, Bungs.	1	No entry/damage	P

CI 13.6	Ingress of Dust Test (AS 60529)				P
EUT identification	Degree of protection (Dust)	Duration of test (hr)	Ambient temperature (°C)	EUT ambient (°C)	Verdict
Unit 1	IP6X	2.6	24.6	31.9	P
Unit 2	IP6X	2.6	22.6	29.6	P

CI 14.3	Ingress of Water Test (AS 60529)					P
EUT identification	Degree of protection (Water)	Depth of EUT from surface (m)	Duration of test (min)	Ambient temperature (°C)	Water Ambient temperature (°C)	Verdict
Unit 1	IPX8	1.0	60.0	23.8	22.2	P
Unit 2	IPX8	1.0	60.0	23.0	22.8	P

**Result**

**Complies**

## 6. Short-circuit (though-fault) test

The device was subjected to the test currents by use of a step down three phase transformer and inductors from an 11 kV supply and a phase controlled on switch and time controlled off circuit breaker:

### Test 20 kA 0.2 s

Results: 0.22 s, 21.8 kA, n=2.0 (power factor = 0.3), 50 Hz, mean of 3 tests applied with 10 minutes between. Refer to Figure 2.

### Test 20 kA 1.0 s

Results: 1.03 s, 20.8 kA, n=2.0 (power factor = 0.3), 50 Hz. Refer to Figure 3.

After current applications, there were no visible disturbance, pitting or burning.

**Result**

**Complies**

## 7. Bonding (earth) path current test

The earth continuity circuit was subjected to the following current waveform by use of a step down transformer and inductors from an 11kV supply and a phase controlled on switch and time controlled off circuit breaker:

### Test 5.01 kA for 9 s

Results: 9.3 s, 5.0 kA, n=1.9, 50 Hz. Refer to Figure 4.

The earth continuity was measured on test completion.

After the current application the measured continuity was 0.0001  $\Omega$ .

**Result**

**Complies**

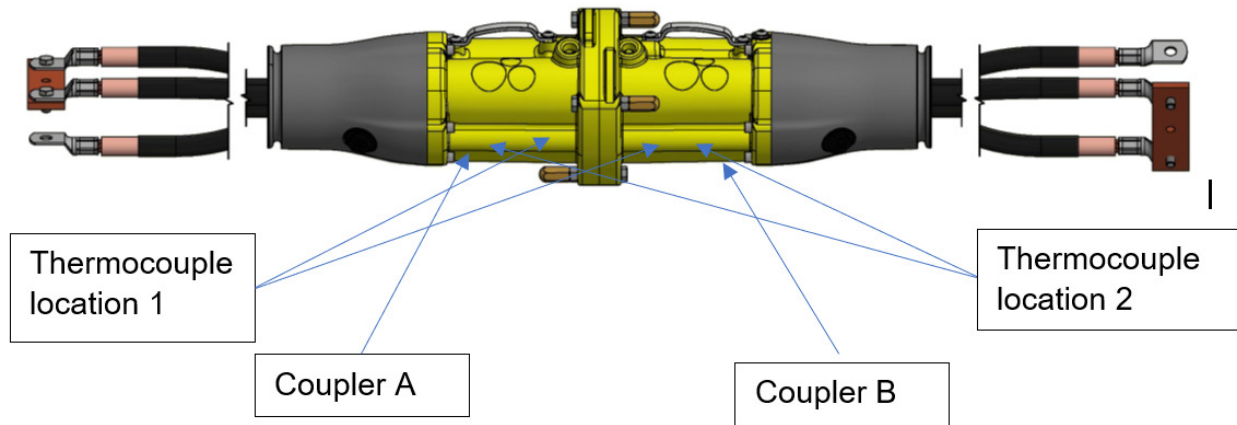
## 8 Temperature rise

All conductors were connected in series and thermocouples were placed as required by Clause 3.3.8.4 of AS/NZS 1300.

Thermocouple locations included:

- (a) Main contact adjacent to connecting device (1)
- (b) Main contact adjacent to cable conductor (2)
- (c) Cable conductor 1 m from cable gland





Location	Coupler	Thermocouple location	Phase ID
A	A	1	White
B	A	2	White
C	A	1	Blue
D	A	2	Blue
E	A	1	Red
F	A	2	Red
G	B	1	Blue
H	B	2	Blue
I	B	1	Red
J	B	2	Red
K	B	1	White
L	B	2	White

A current of 800 A was passed through the test object until the temperature variation did not exceed 2 K/h.

Location	A	B	C	D	E	F	G	H	I	J	K	L
Rise	40	38	40	36	37	39	37	38	37	37	42	39
Difference from cable	9	7	8	5	5	8	6	7	6	5	10	8

(Values are degrees Kelvin)

**Result**

**Complies**

## Oscillograms

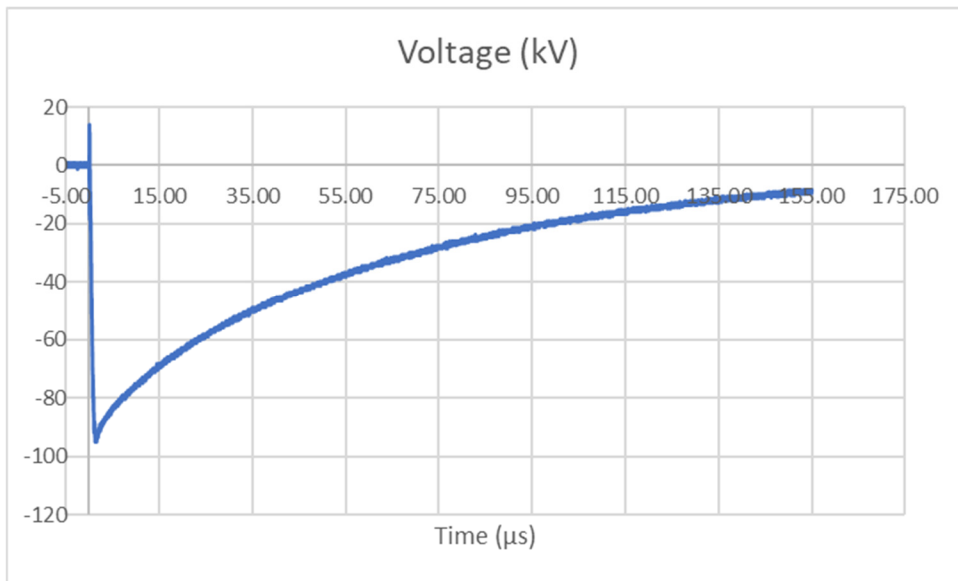


Figure 1. Last 95 kV impulse

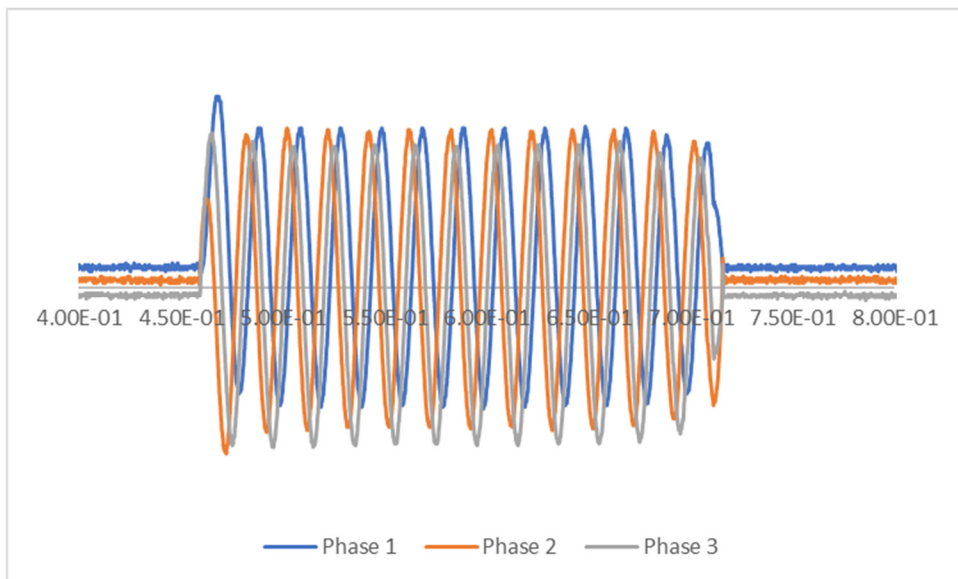


Figure 2. 20 kA for 0.2 s short circuit test number 3

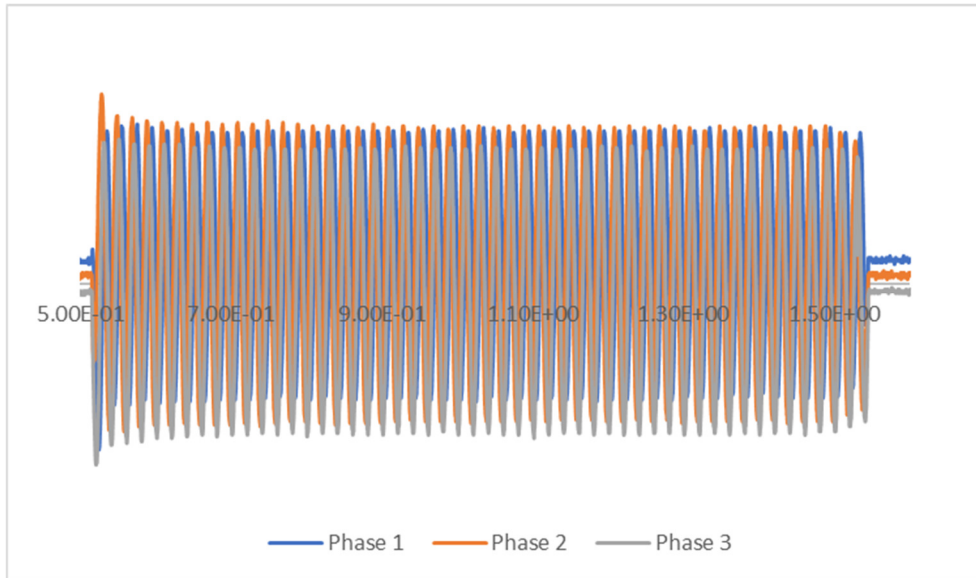


Figure 3. 20 kA for 1 s short circuit test

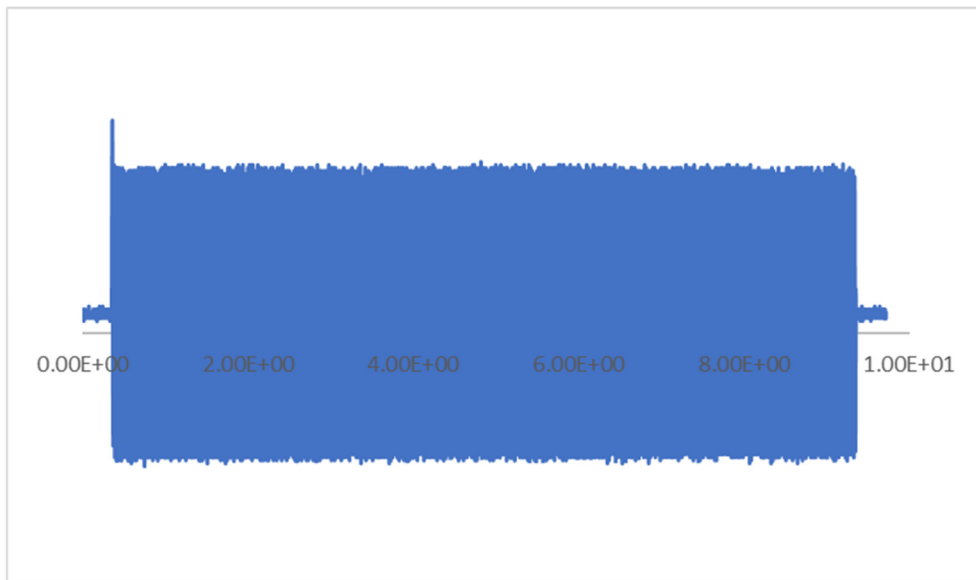


Figure 4. 5 kA for 9 s short circuit test

**Pictures:**



Picture 1 General view of coupler



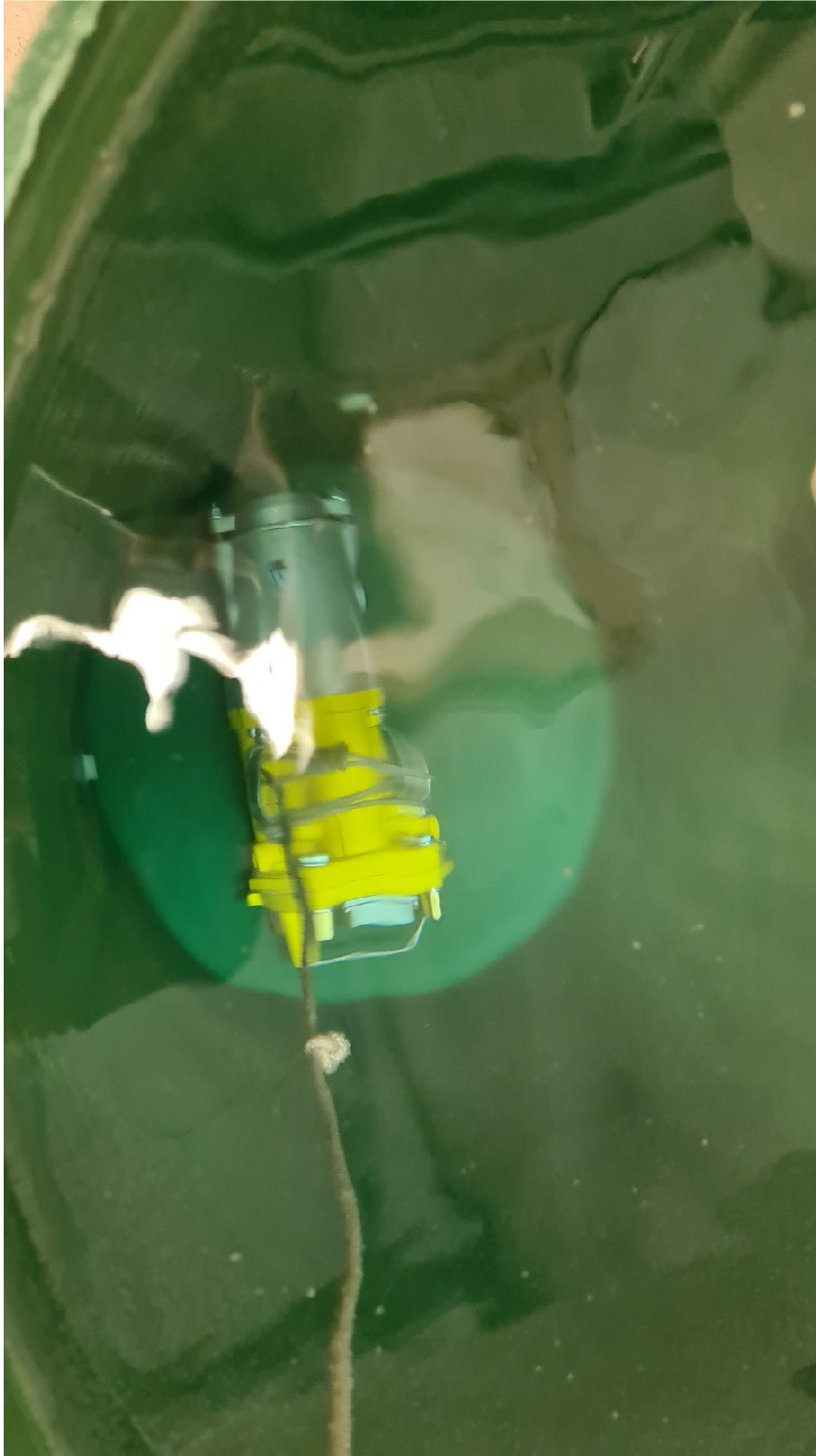


Picture 2 View of main contacts



Picture 3 Coupler in dust test





Picture 4 Coupler in 1 m water



Picture 5 Contacts after short circuit test



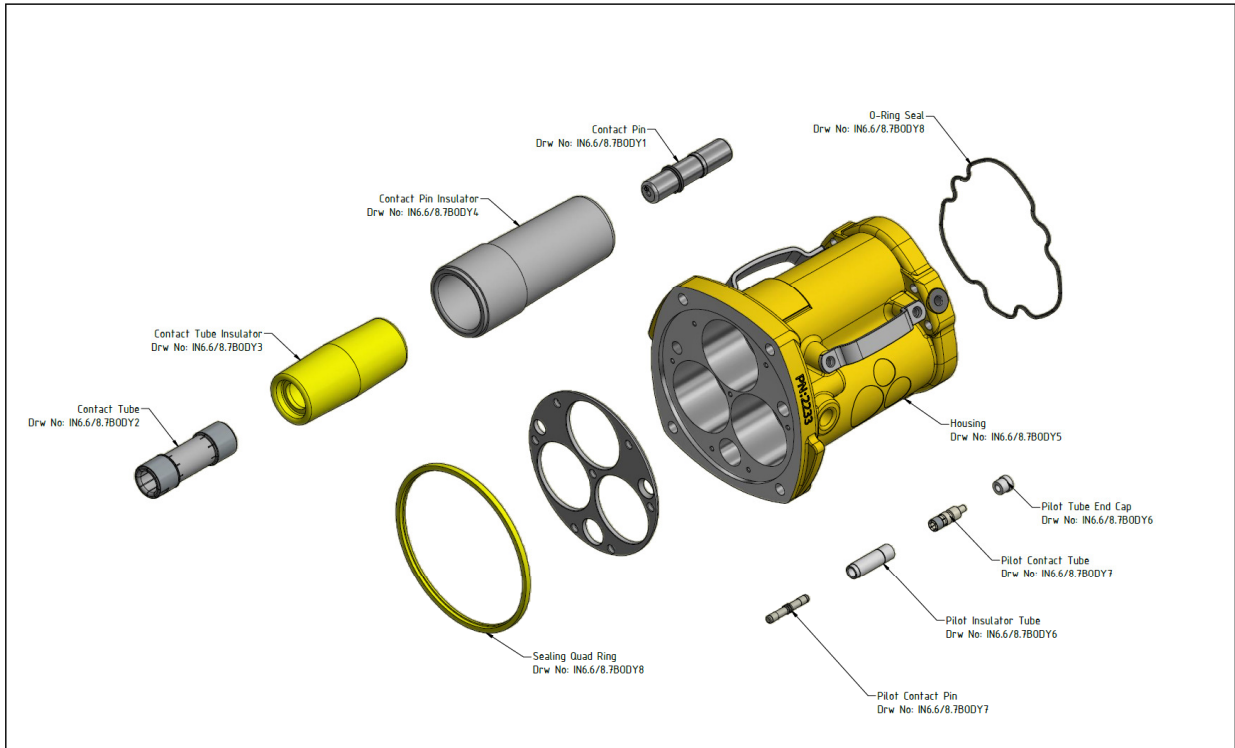
Picture 6 Contacts after short circuit test



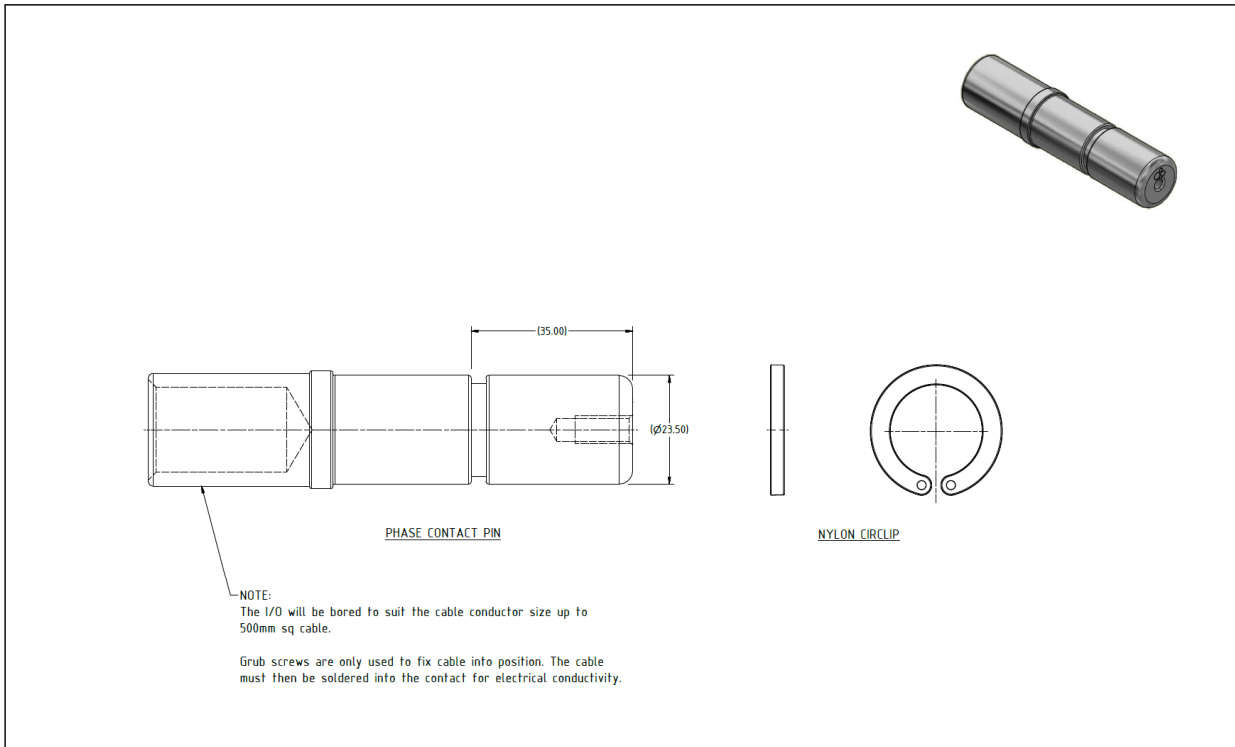
## Drawings:

List of drawings:

No	Drawing No.	Title	Revision	Date
1	IN6.6/8.7BODY	Cable coupler & components	2	29/11/2023
2	IN6.6/8.7BODY1	Phase contact pin	2	29/11/2023
3	IN6.6/8.7BODY2	Phase contact tube	2	29/11/2023
4	IN6.6/8.7BODY3	Phase Tube insulator	2	29/11/2023
5	IN6.6/8.7BODY4	Phase Pin insulator	2	29/11/2023
6	IN6.6/8.7BODY5	Housing	2	29/11/2023
7	IN6.6/8.7BODY6	Pilot Insulator tube	2	29/11/2023
8	IN6.6/8.7BODY7	Pilot Pin/Tube	2	29/11/2023
9	IN6.6/8.7BODY8	Sealing quad ring/O-ring seal	2	29/11/2023
10	IN6.6/8.7COVER	End covers & components	1	29/11/2023
11	IN6.6/8.7COVER1	Cast pro cover	1	29/11/2023
12	IN6.6/8.7COVER2	Insulated end cover	1	29/11/2023
13	IN6.6/8.7COVER3	Universal End Cover Cast Box	1	29/11/2023
14	IN6.6/8.7COVER4	Sealing quad ring/O-Ring Seal	1	29/11/2023
15	IN6.6/8.7COVER5	End cover plug	1	29/11/2023
16	IN6.6/8.7GLANDKA	KA Glands & components	1	29/11/2023
17	IN6.6/8.7GLANDKA1	KA Small/KA Large	1	29/11/2023
18	IN6.6/8.7GLANDKA2	KA OCS Comp ring/KA OCL Comp ring	1	29/11/2023
19	IN6.6/8.7GLANDKA3	KA OCS Pressure ring/KA OCL Pressure ring	1	29/11/2023
20	IN6.6/8.7GLANDKA4	Filler bung/O-ring	1	29/11/2023
21	IN6.6/8.7GLANDKAN	KAN Glands & components	1	29/11/2023
22	IN6.6/8.7GLANDKAN1	KAN Small Housing/KAN Large Housing	1	29/11/2023
23	IN6.6/8.7GLANDKAN2	KAN Small Comp washer/KAN Large Comp washer	1	29/11/2023
24	IN6.6/8.7GLANDKAN3	KAN OCS Comp ring/KAN OCL Comp ring	1	29/11/2023
25	IN6.6/8.7GLANDKAN4	KAN Small ss comp ring/KAN Large ss comp ring	1	29/11/2023
26	IN6.6/8.7GLANDKAN5	Filler bung/O-ring	1	29/11/2023



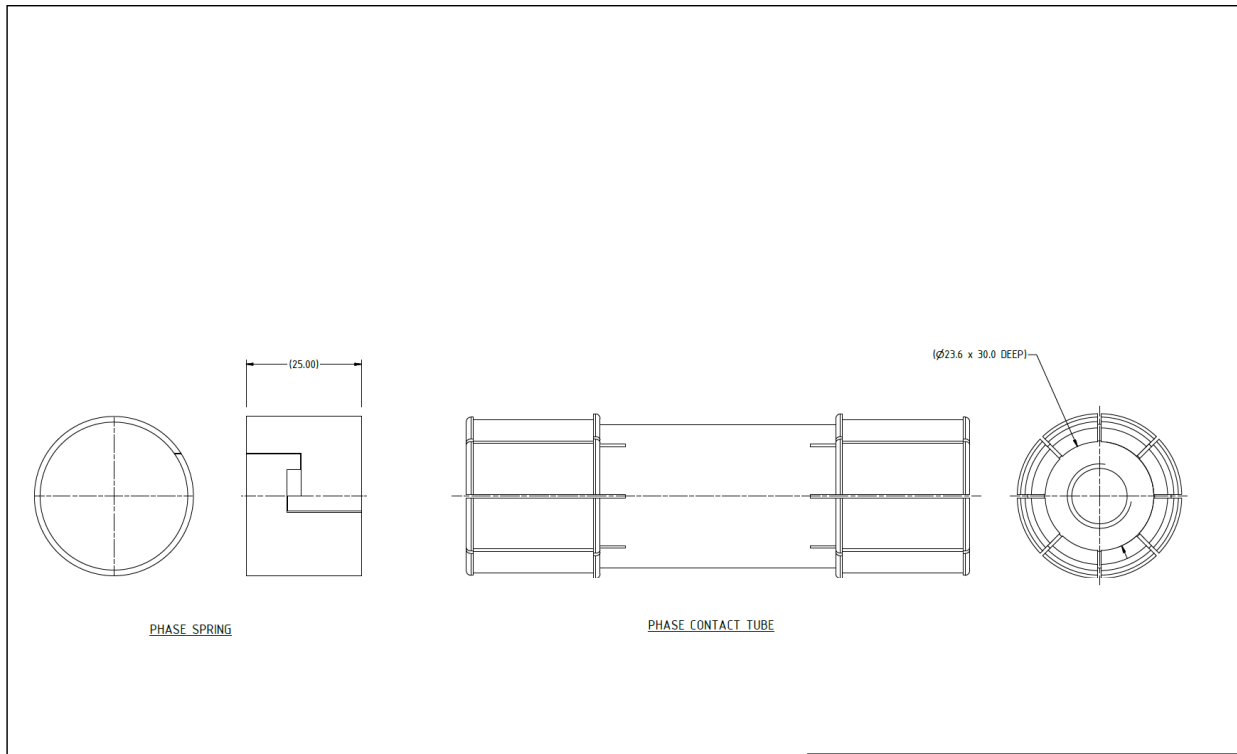
AusProof PTY LTD		DRAWN BY D.MINENKO	PART NAME 6.6-8.7 kV BODY EXPLODED VIEW	SURFACE FINISH	
@ COPYRIGHT RESERVED		APPROVED BY C.TAYLOR	DRAWN DATE 26/07/2021	REVISION HISTORY	
ENG DWG		SHEET 1 OF 9	DRAWING NOT TO SCALE Request Dimensions if in Doubt	REV	DESCRIPTION
DIMENSIONS (Metric-millimetre-mm) UNLESS OTHERWISE SPECIFIED	X.X 0.1 X.XX 0.05	ALL SURFACES TO UNLESS OTHERWISE NOTED	SIZE A3	2	ADDED SEAL PAGE TO SET
			PART NO. IN6.6/8.7BODY	1	Original
			MATERIAL		DATE 29/11/2023 26/07/2021



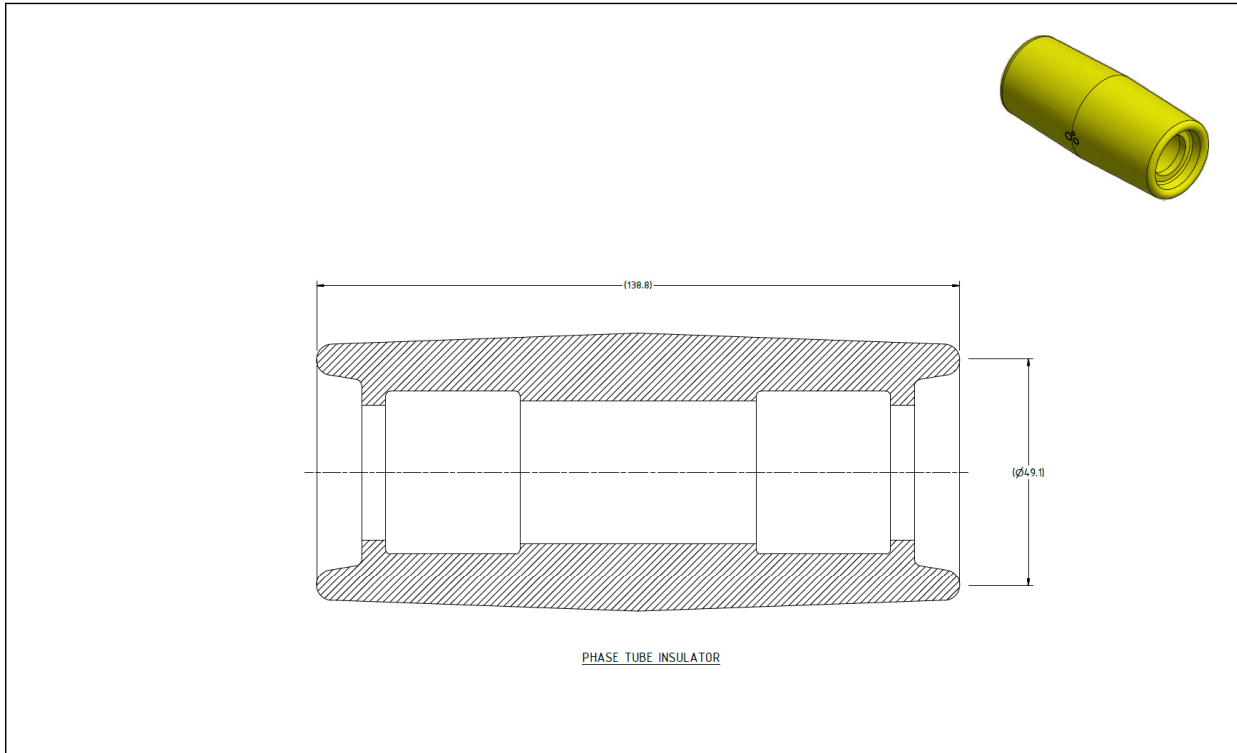
NOTE:  
The 1/0 will be bored to suit the cable conductor size up to 500mm sq cable.

Grub screws are only used to fix cable into position. The cable must then be soldered into the contact for electrical conductivity.

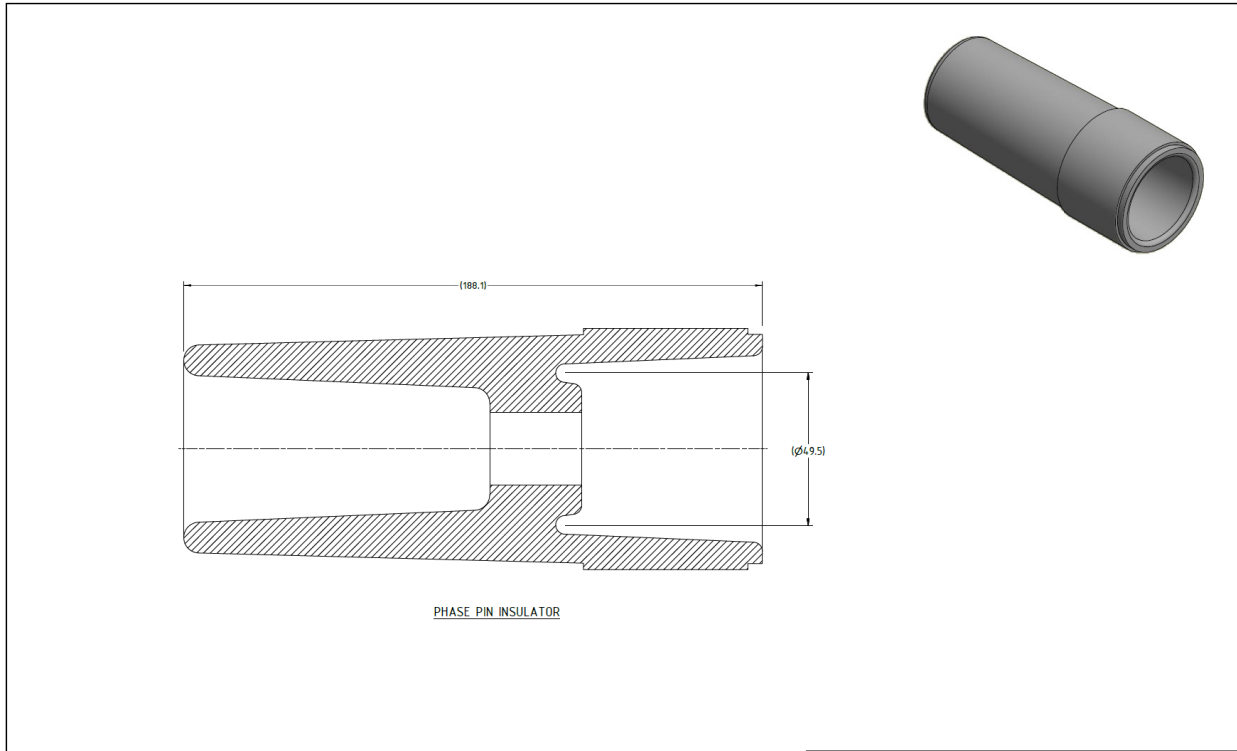
AusProof PTY LTD		DRAWN BY D.MINENKO	PART NAME 6.6-8.7 kV BODY EXPLODED VIEW	SURFACE FINISH	
@ COPYRIGHT RESERVED		APPROVED BY C.TAYLOR	DRAWN DATE 26/07/2021	REVISION HISTORY	
ENG DWG		SHEET 2 OF 9	DRAWING NOT TO SCALE Request Dimensions if in Doubt	REV	DESCRIPTION
DIMENSIONS (Metric-millimetre-mm) UNLESS OTHERWISE SPECIFIED	X.X 0.1 X.XX 0.05	ALL SURFACES TO UNLESS OTHERWISE NOTED	SIZE A3	2	ADDED SEAL PAGE TO SET
			PART NO. IN6.6/8.7BODY1	1	Original
			MATERIAL		DATE 29/11/2023 26/07/2021



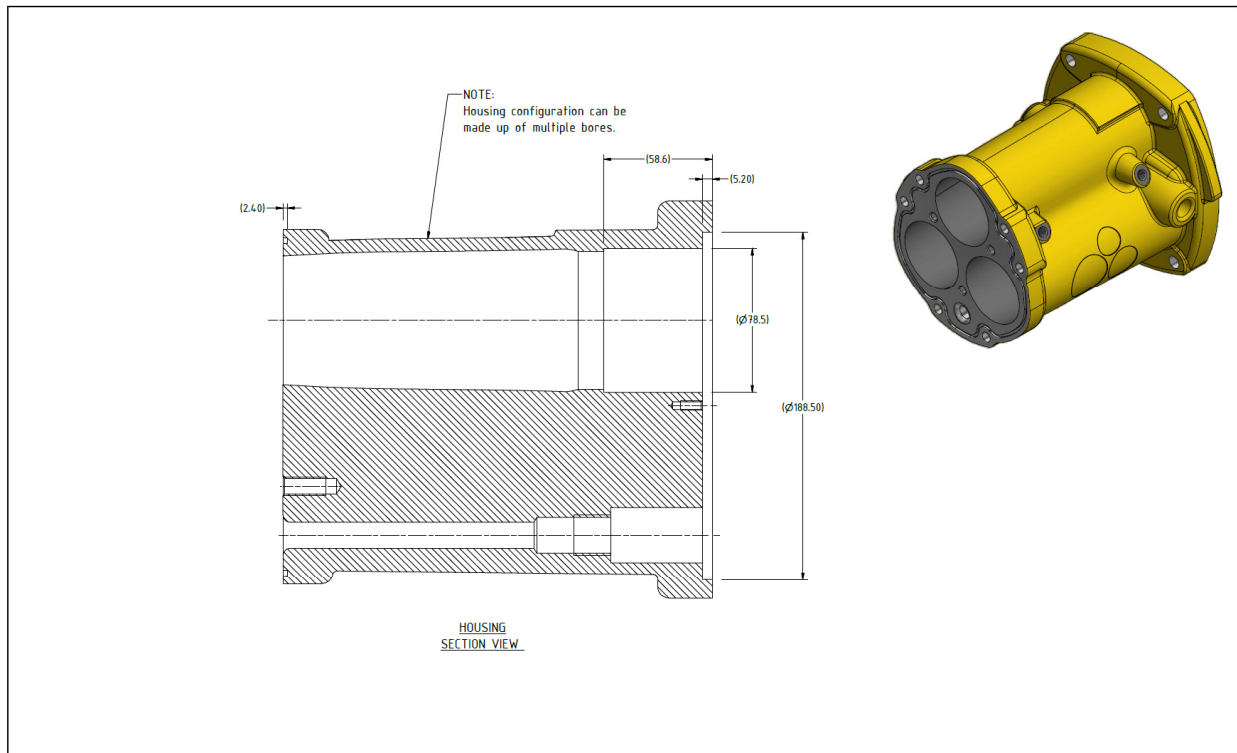
AusProof PTY LTD		DRAWN BY D.MINENKO	PART NAME 6.6-8.7 kV BODY EXPLODED VIEW	REVISION HISTORY	
@ COPYRIGHT RESERVED		APPROVED BY C.TAYLOR	DRAWN DATE 26/07/2021	REV	DESCRIPTION
DIMENSIONS (Metric-millimetre-mm) UNLESS OTHERWISE SPECIFIED		SHEET 3 OF 9	DRAWING NOT TO SCALE Request Dimensions if in Doubt	2	ADDED SEAL PAGE TO SET
X.X 0.1 X.XX 0.05		SIZE A3	PART NO. IN6.6/8.7BODY2	1	Original
UNLESS OTHERWISE NOTED			MATERIAL		DATE 29/11/2023 26/07/2021



AusProof PTY LTD		DRAWN BY D.MINENKO	PART NAME 6.6-8.7 kV BODY EXPLODED VIEW	REVISION HISTORY	
@ COPYRIGHT RESERVED		APPROVED BY C.TAYLOR	DRAWN DATE 26/07/2021	REV	DESCRIPTION
DIMENSIONS (Metric-millimetre-mm) UNLESS OTHERWISE SPECIFIED		SHEET 4 OF 9	DRAWING NOT TO SCALE Request Dimensions if in Doubt	2	ADDED SEAL PAGE TO SET
X.X 0.1 X.XX 0.05		SIZE A3	PART NO. IN6.6/8.7BODY3	1	Original
UNLESS OTHERWISE NOTED			MATERIAL		DATE 29/11/2023 26/07/2021

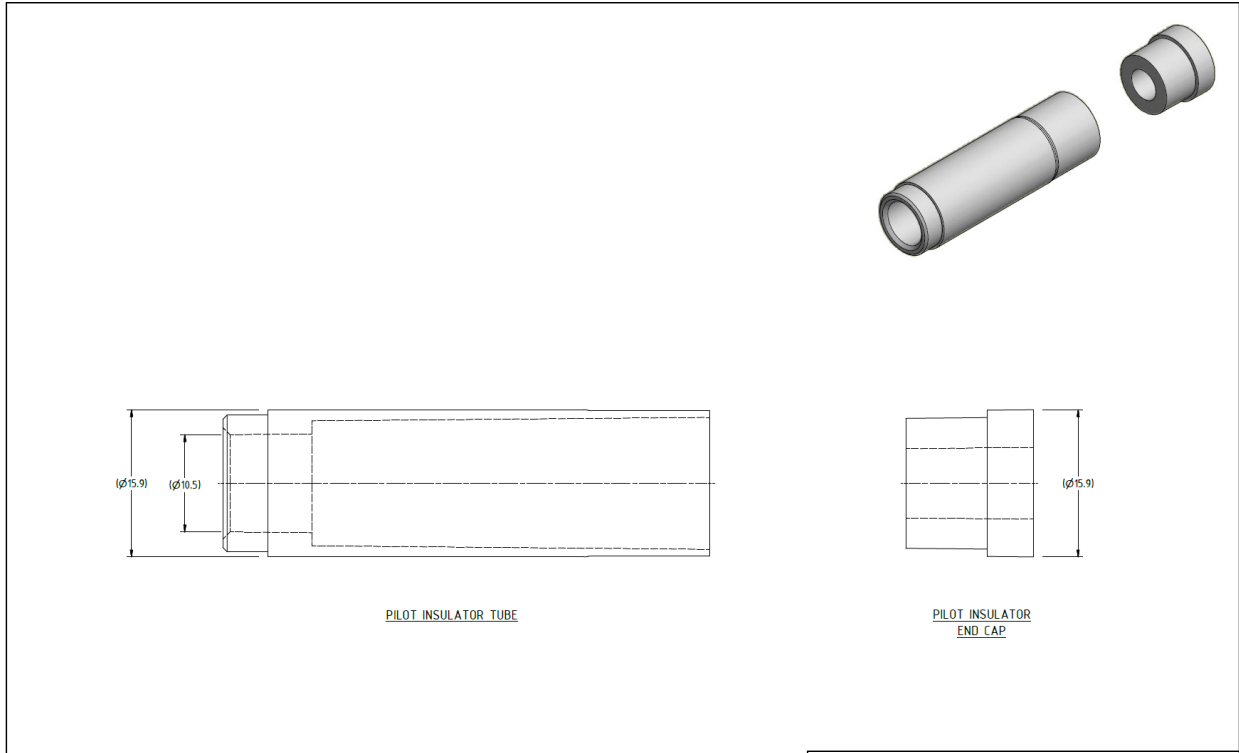


AusProof PTY LTD		DRAWN BY D.MINENKO	PART NAME 6.6-8.7 kV BODY EXPLODED VIEW	REVISION HISTORY	
© COPYRIGHT RESERVED		APPROVED BY C.TAYLOR	DRAWN DATE 26/07/2021	REV	DESCRIPTION
DIMENSIONS (Metric millimetre-mm) UNLESS OTHERWISE SPECIFIED		SHEET 5 OF 9	DRAWING NOT TO SCALE Request Dimensions if in Doubt	2	ADDED SEAL PAGE TO SET
ALL SURFACES TO UNLESS OTHERWISE NOTED		SIZE A3	PART NO. IN6.6/8.7BODY4	1	Original
					DATE
					29/11/2023
					26/07/2021

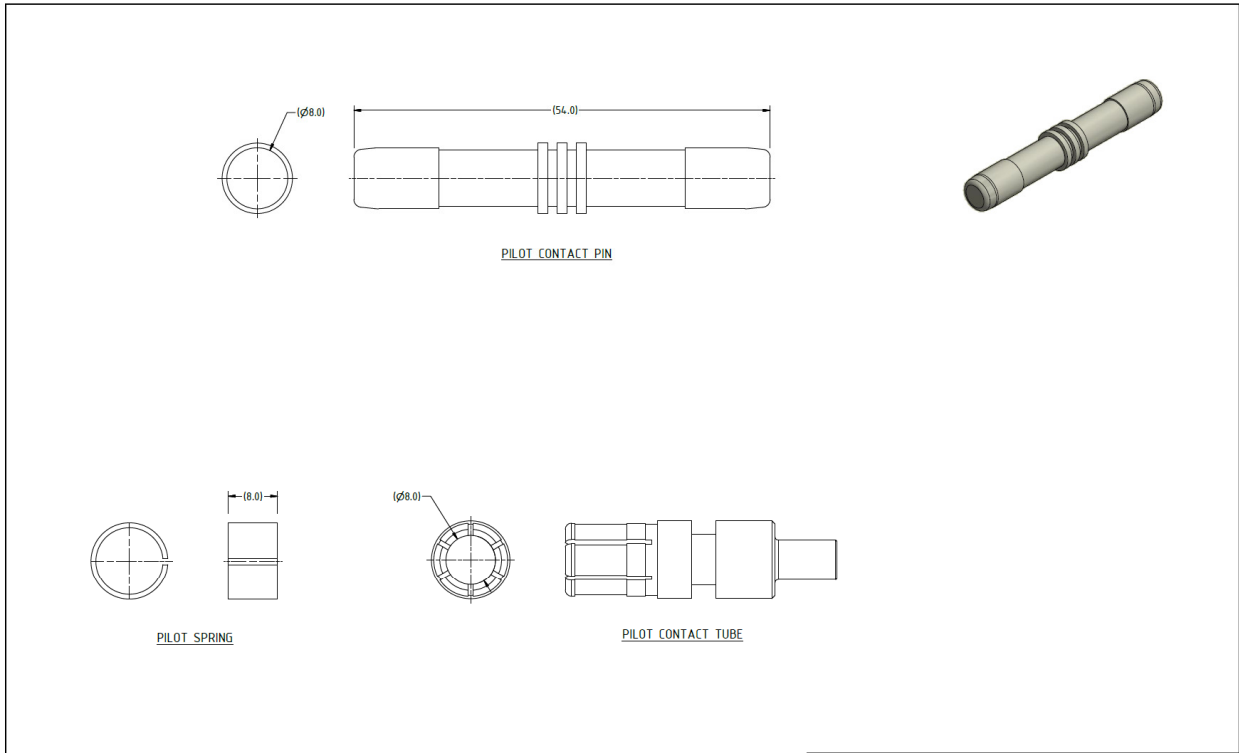


AusProof PTY LTD		DRAWN BY D.MINENKO	PART NAME 6.6-8.7 kV BODY EXPLODED VIEW	REVISION HISTORY	
© COPYRIGHT RESERVED		APPROVED BY C.TAYLOR	DRAWN DATE 26/07/2021	REV	DESCRIPTION
DIMENSIONS (Metric millimetre-mm) UNLESS OTHERWISE SPECIFIED		SHEET 6 OF 9	DRAWING NOT TO SCALE Request Dimensions if in Doubt	2	ADDED SEAL PAGE TO SET
ALL SURFACES TO UNLESS OTHERWISE NOTED		SIZE A3	PART NO. IN6.6/8.7BODY5	1	Original
					DATE
					29/11/2023
					26/07/2021

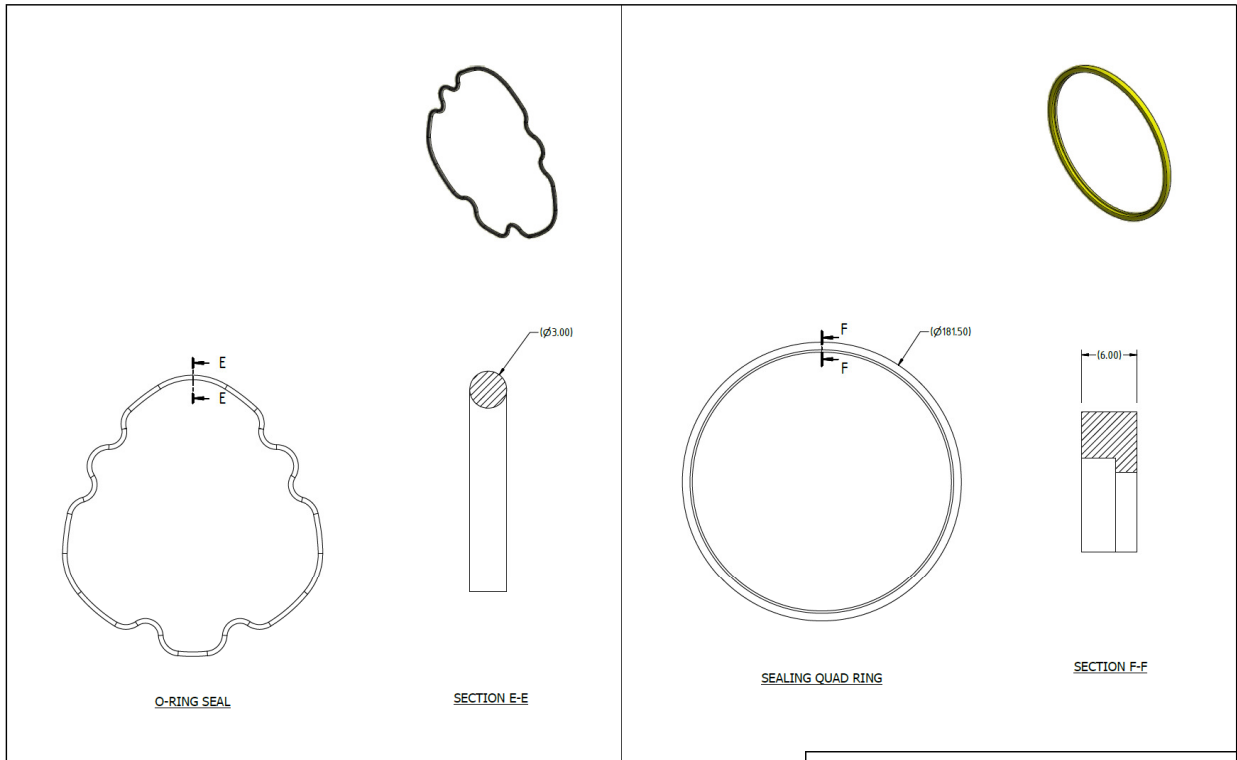




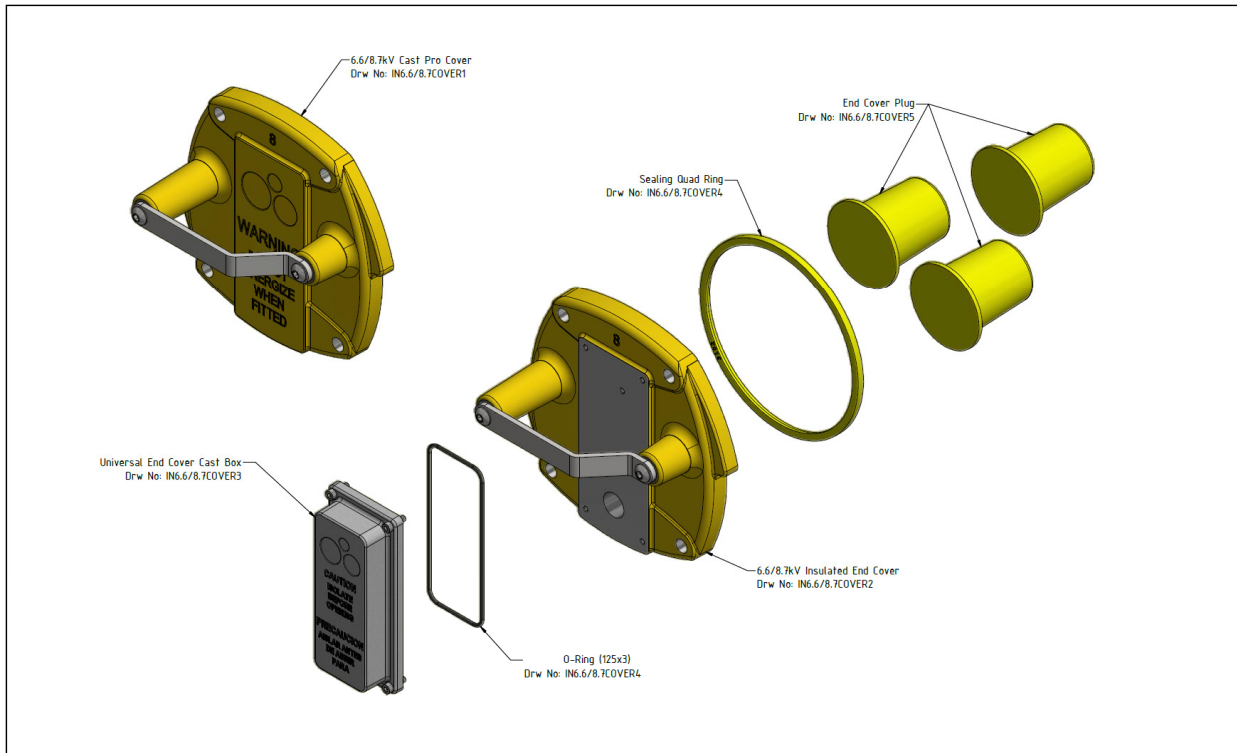
AusProof PTY LTD		DRAWN BY D.MINENKO	PART NAME 6.6-8.7 kV BODY EXPLODED VIEW	REVISION HISTORY	
@ COPYRIGHT RESERVED		APPROVED BY C.TAYLOR	DRAWN DATE 26/07/2021	REV	DESCRIPTION
DIMENSIONS (Metric millimetre-mm) UNLESS OTHERWISE SPECIFIED		SHEET 7 OF 9	DRAWING NOT TO SCALE Request Dimensions if in Doubt	2	ADDED SEAL PAGE TO SET
ALL SURFACES TO UNLESS OTHERWISE NOTED		SIZE A3	PART NO. ING.6/8.7BODY6	1	Original
X.XX 0.1 X.XX 0.05		MATERIAL		29/11/2023	DATE



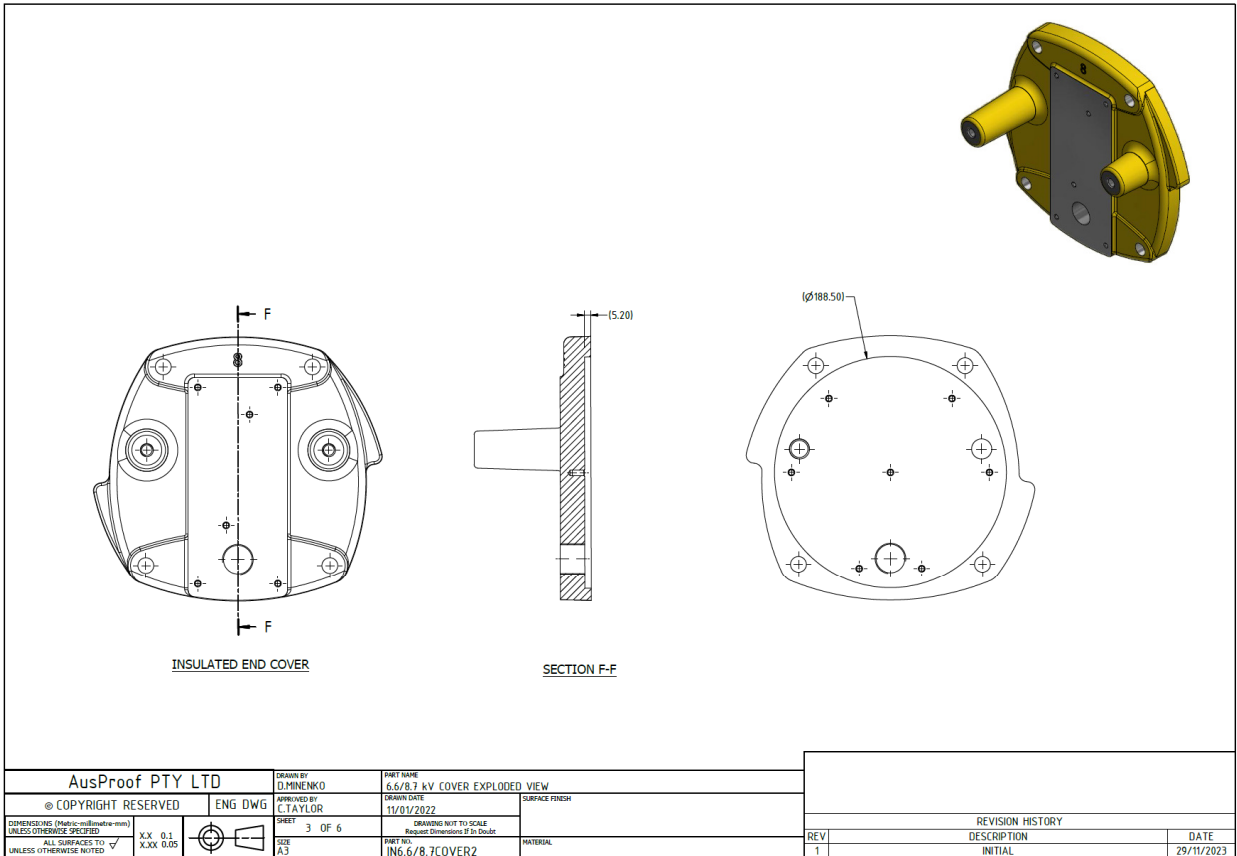
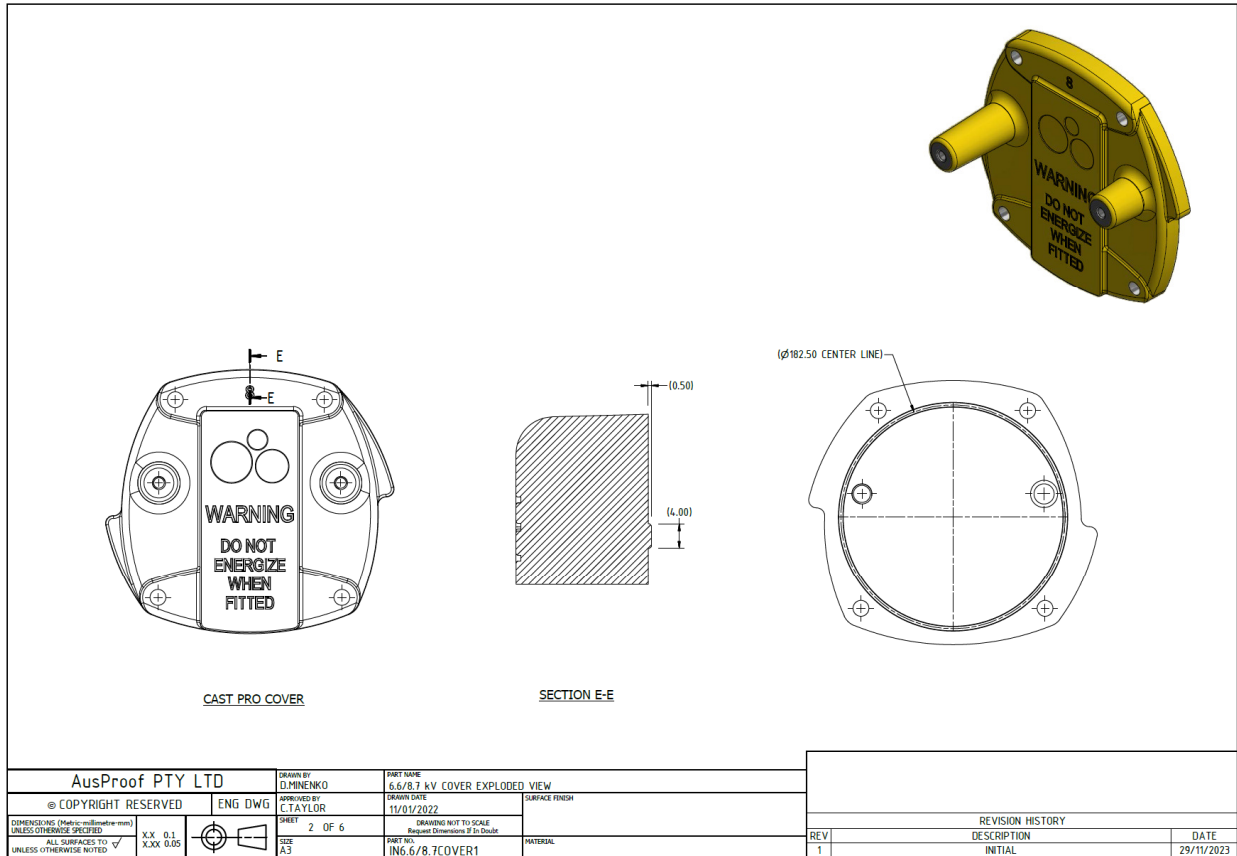
AusProof PTY LTD		DRAWN BY D.MINENKO	PART NAME 6.6-8.7 kV BODY EXPLODED VIEW	REVISION HISTORY	
@ COPYRIGHT RESERVED		APPROVED BY C.TAYLOR	DRAWN DATE 26/07/2021	REV	DESCRIPTION
DIMENSIONS (Metric millimetre-mm) UNLESS OTHERWISE SPECIFIED		SHEET 8 OF 9	DRAWING NOT TO SCALE Request Dimensions if in Doubt	2	ADDED SEAL PAGE TO SET
ALL SURFACES TO UNLESS OTHERWISE NOTED		SIZE A3	PART NO. ING.6/8.7BODY7	1	Original
X.XX 0.1 X.XX 0.05		MATERIAL		29/11/2023	DATE

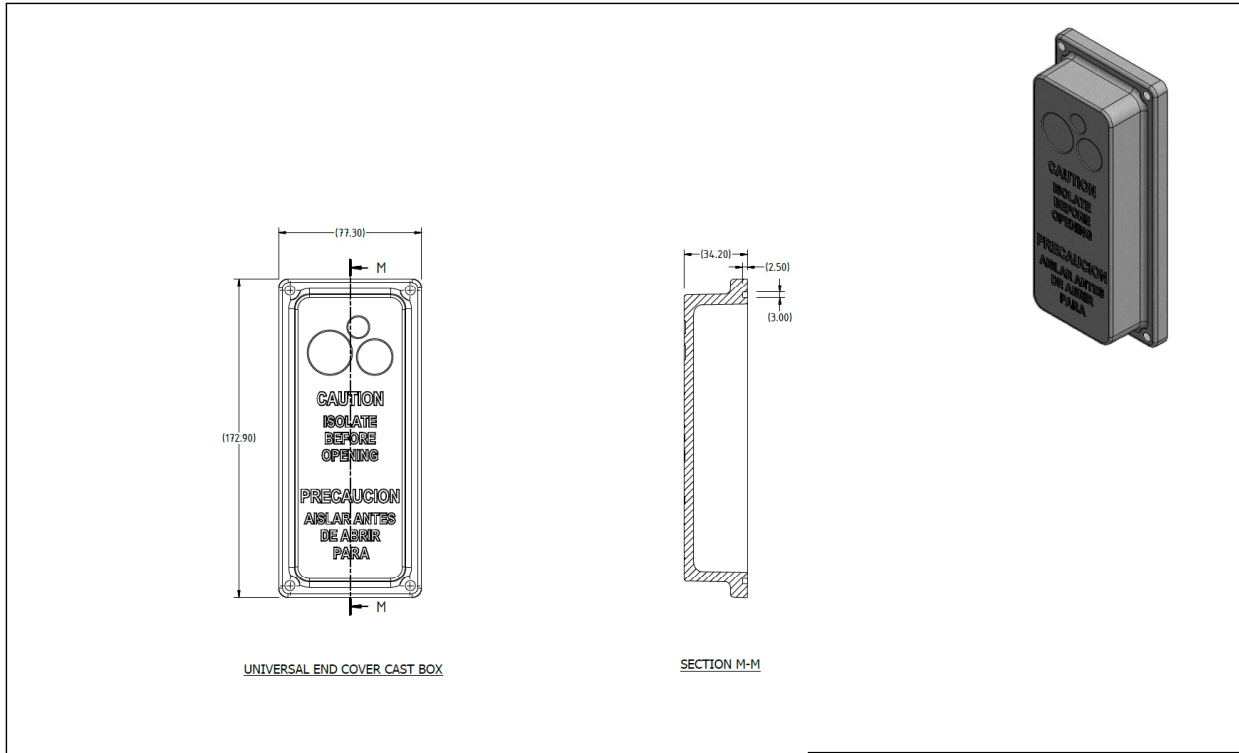


AusProof PTY LTD		DRAWN BY D.MHENKO	PART NAME 6.6-8.7 kV BODY EXPLODED VIEW		
© COPYRIGHT RESERVED		APPROVED BY C.TAYLOR	DRAWN DATE 26/07/2021	SURFACE FINISH	
ENG DWG		SHEET 9 OF 9	DRAWING NOT TO SCALE Request Dimensions if in Doubt	REVISION HISTORY	
DIMENSIONS (Metric/millimetre-mm) UNLESS OTHERWISE SPECIFIED ALL SURFACES TO UNLESS OTHERWISE NOTED		XX 0.1 X.XX 0.05	SIZE A3	PART NO. IN6.6/8.7BODY8	MATERIAL
				REV	DATE
				2	29/11/2023
				1	26/07/2021
				DESCRIPTION	
				ADDED SEAL PAGE TO SET	Original

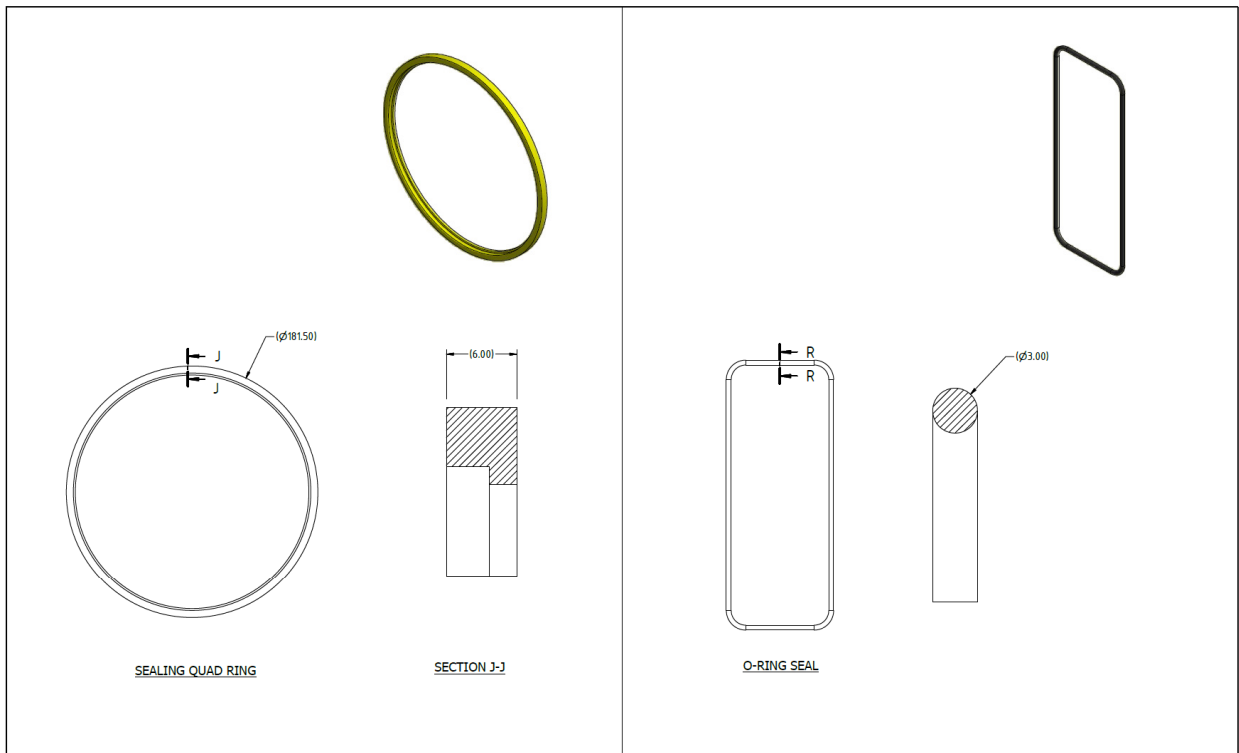


AusProof PTY LTD		DRAWN BY D.MHENKO	PART NAME 6.6/8.7 kV COVER EXPLODED VIEW		
© COPYRIGHT RESERVED		APPROVED BY C.TAYLOR	DRAWN DATE 11/01/2022	SURFACE FINISH	
ENG DWG		SHEET 1 OF 6	DRAWING NOT TO SCALE Request Dimensions if in Doubt	REVISION HISTORY	
DIMENSIONS (Metric/millimetre-mm) UNLESS OTHERWISE SPECIFIED ALL SURFACES TO UNLESS OTHERWISE NOTED		XX 0.1 X.XX 0.05	SIZE A3	PART NO. IN6.6/8.7COVER	MATERIAL
				REV	DATE
				1	29/11/2023
				DESCRIPTION	
				INITIAL	

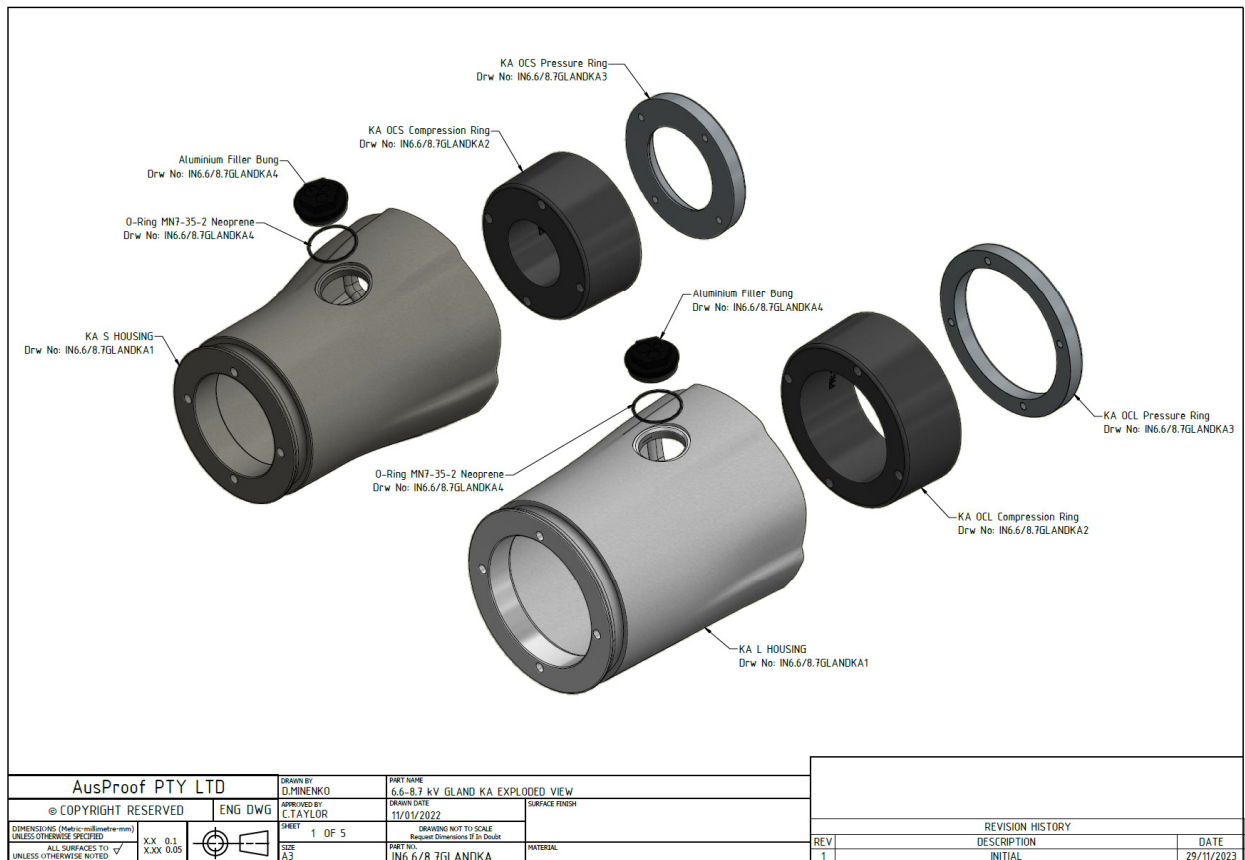
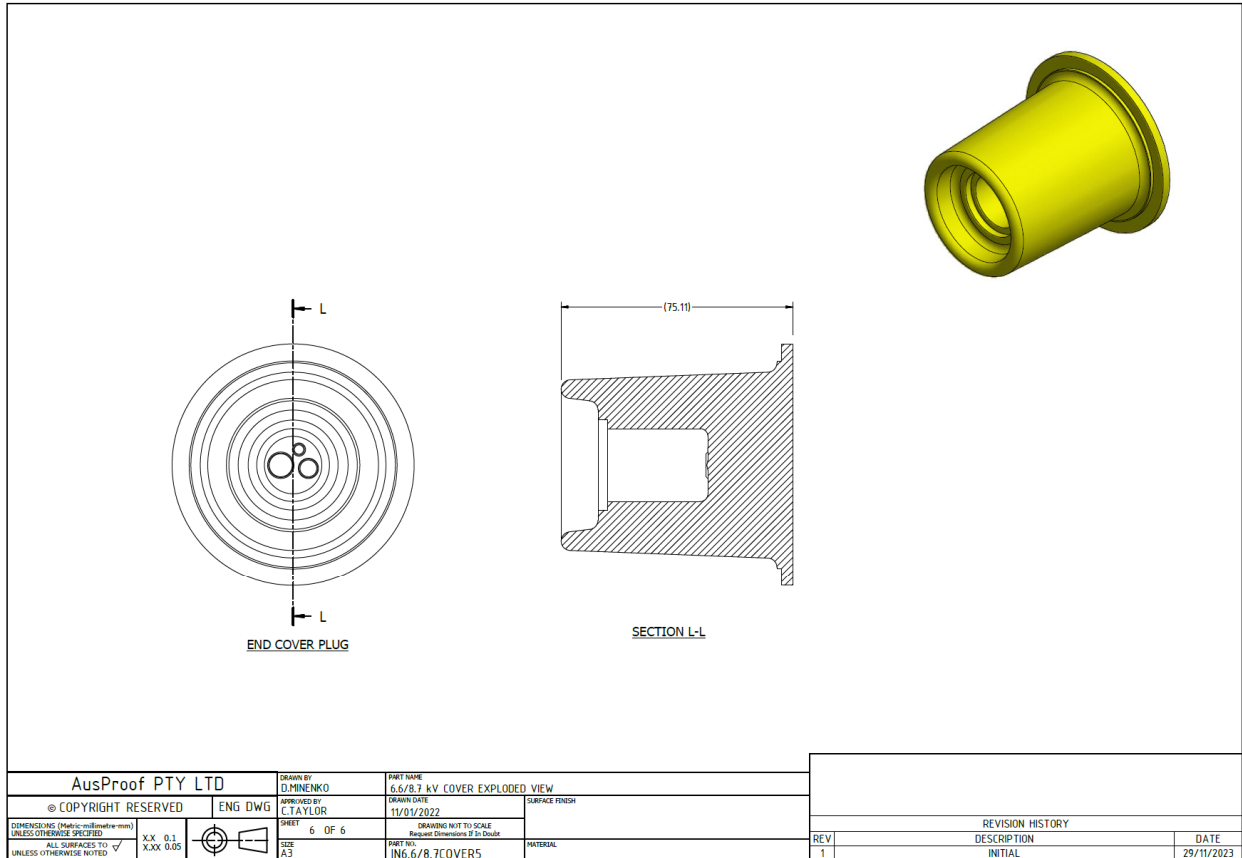


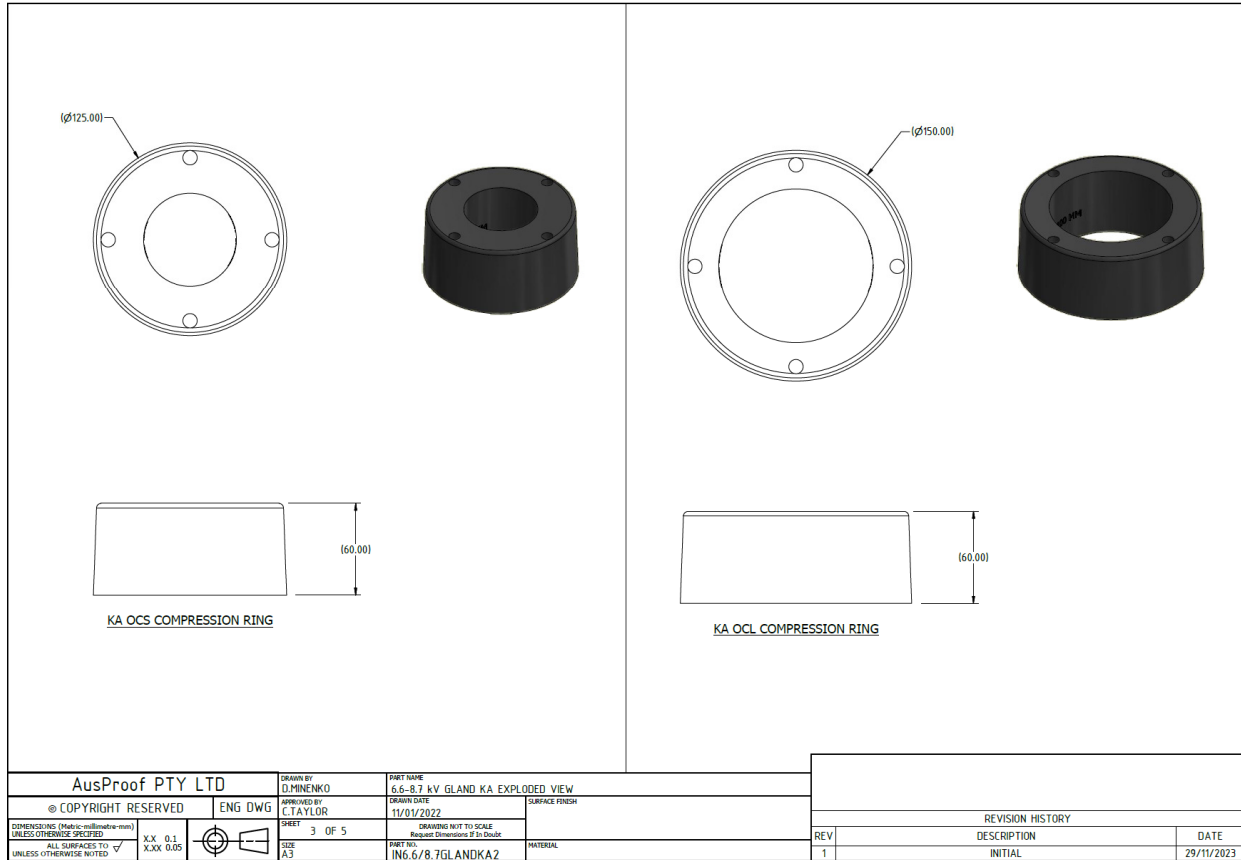
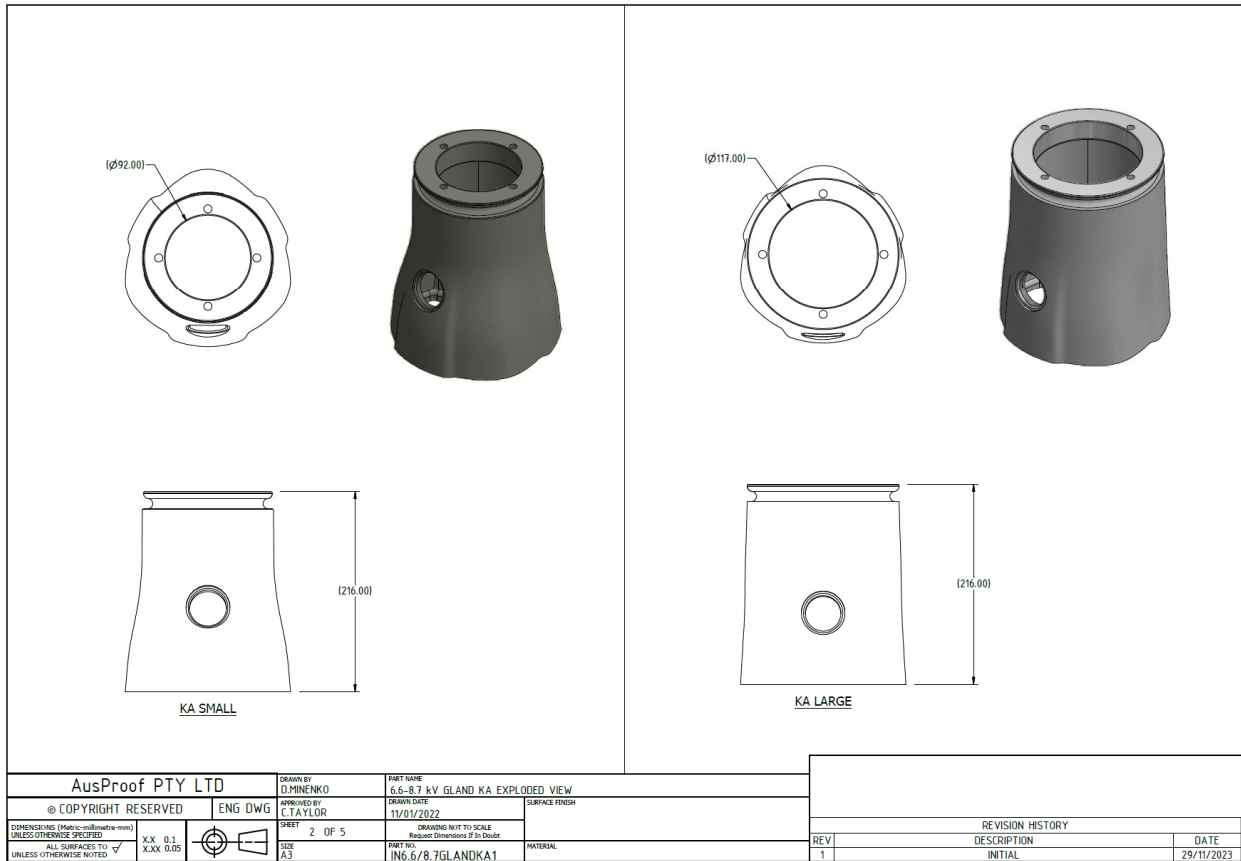


AusProof PTY LTD		DRAWN BY D.MINENKO	PART NAME 6.6/8.7 kV COVER EXPLODED VIEW	SURFACE FINISH	
© COPYRIGHT RESERVED		APPROVED BY C.TAYLOR	DRAWN DATE 11/01/2022	REVISION HISTORY	
COMPENSATIONS (Metric: millimetre-mm) UNLESS OTHERWISE SPECIFIED	X.X 0.1 X.XX 0.05	SHEET 4 OF 6	DRAWING NOT TO SCALE Request Dimensions if in Doubt	REV	DESCRIPTION
ALL SURFACES TO UNLESS OTHERWISE NOTED		SIZE A3	PART NO. IN6.6/8.7COVER3	1	INITIAL
			MATERIAL		DATE
					29/11/2023

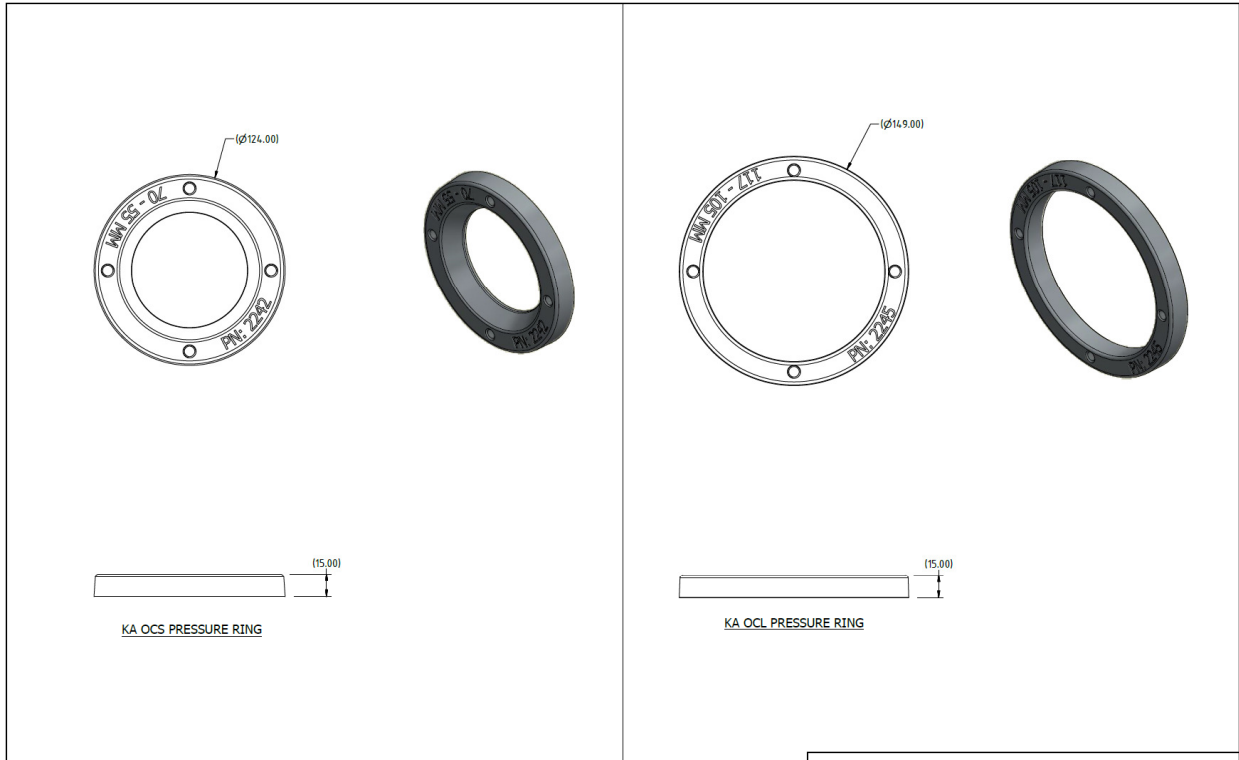


AusProof PTY LTD		DRAWN BY D.MINENKO	PART NAME 6.6/8.7 kV COVER EXPLODED VIEW	SURFACE FINISH	
© COPYRIGHT RESERVED		APPROVED BY C.TAYLOR	DRAWN DATE 11/01/2022	REVISION HISTORY	
COMPENSATIONS (Metric: millimetre-mm) UNLESS OTHERWISE SPECIFIED	X.X 0.1 X.XX 0.05	SHEET 5 OF 6	DRAWING NOT TO SCALE Request Dimensions if in Doubt	REV	DESCRIPTION
ALL SURFACES TO UNLESS OTHERWISE NOTED		SIZE A3	PART NO. IN6.6/8.7COVER6	1	INITIAL
			MATERIAL		DATE
					29/11/2023

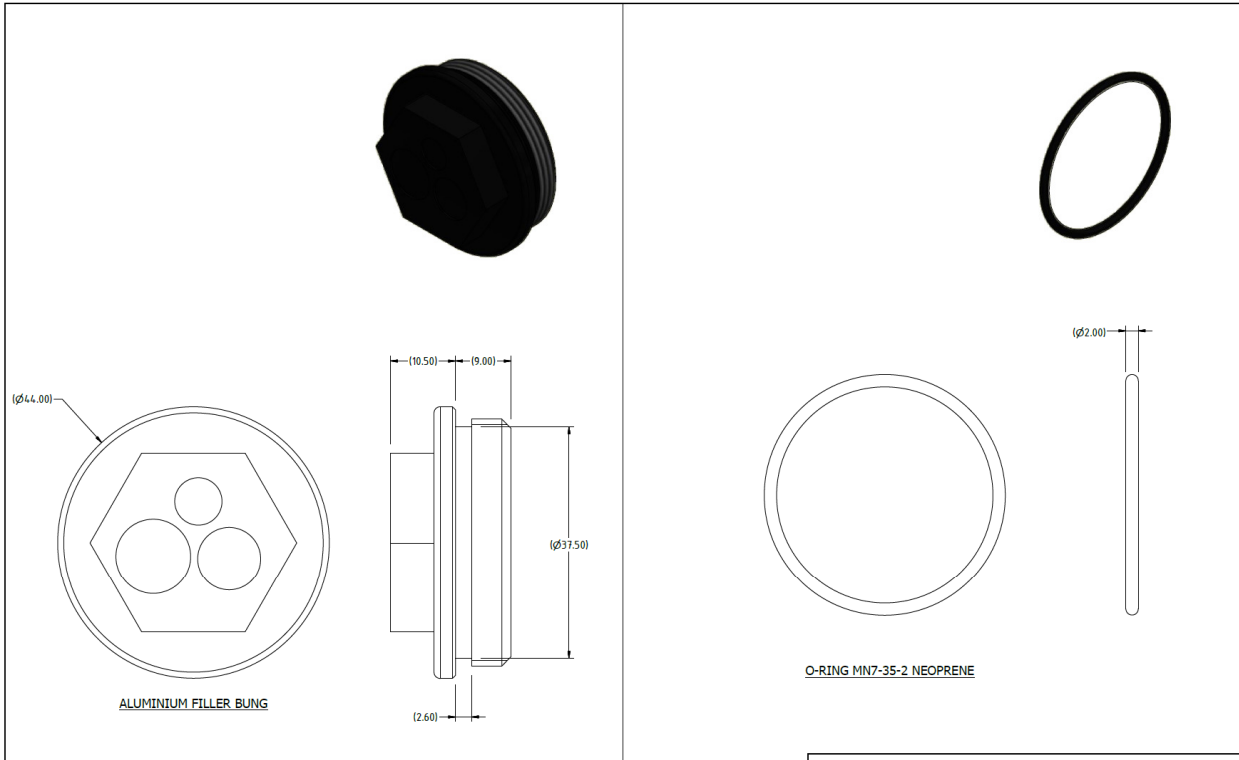




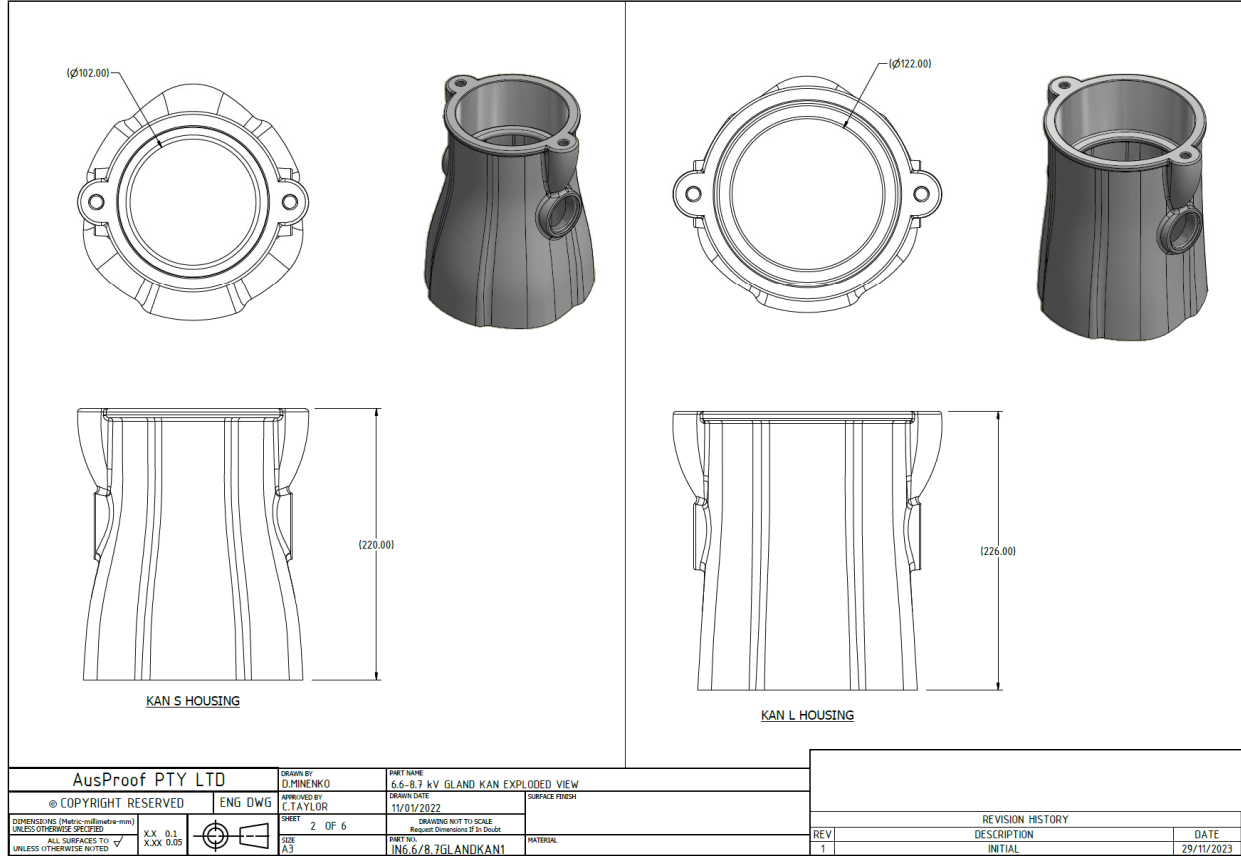
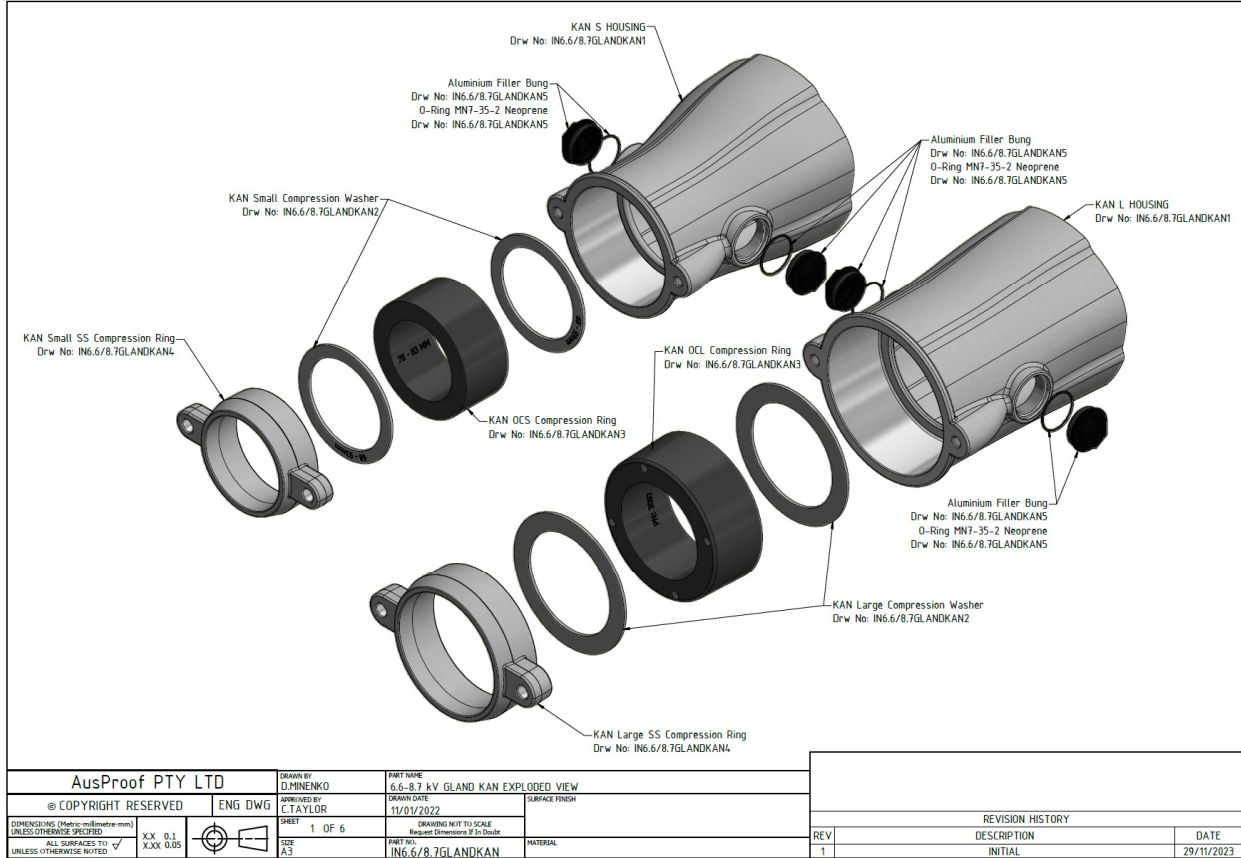


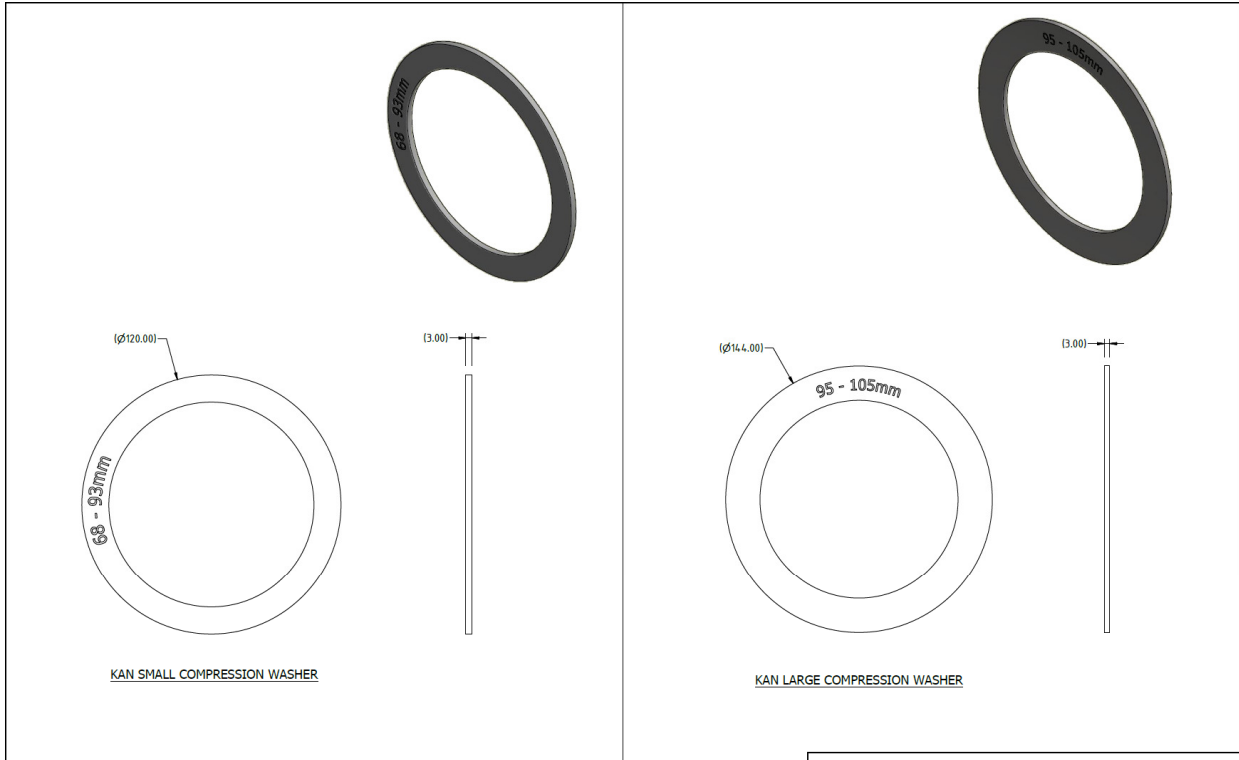


AusProof PTY LTD		DRAWN BY D.MHLENKO	PART NAME 6.6-8.7 kV GLAND KA EXPLODED VIEW	REVISION HISTORY	
© COPYRIGHT RESERVED		APPROVED BY C.TAYLOR	DRAWN DATE 11/01/2022	REV	DATE
DIMENSIONS (Metric-millimetre-mm) UNLESS OTHERWISE SPECIFIED		SHEET 4 OF 5	DRAWING NOT TO SCALE Request Dimensions if in Doubt	1	29/11/2023
ALL SURFACES TO UNLESS OTHERWISE NOTED		SIZE A3	PART NO. ING.6/8.7GLANDKA3	DESCRIPTION INITIAL	

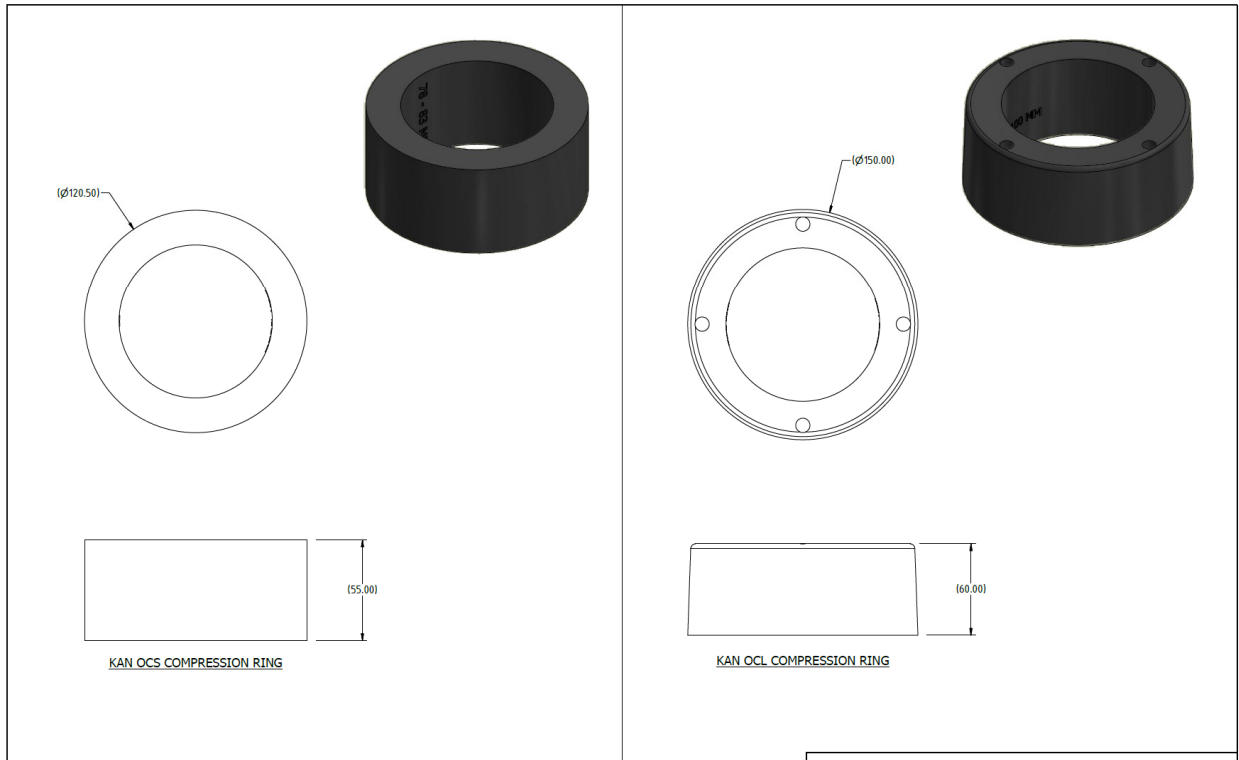


AusProof PTY LTD		DRAWN BY D.MHLENKO	PART NAME 6.6-8.7 kV GLAND KA EXPLODED VIEW	REVISION HISTORY	
© COPYRIGHT RESERVED		APPROVED BY C.TAYLOR	DRAWN DATE 11/01/2022	REV	DATE
DIMENSIONS (Metric-millimetre-mm) UNLESS OTHERWISE SPECIFIED		SHEET 5 OF 5	DRAWING NOT TO SCALE Request Dimensions if in Doubt	1	29/11/2023
ALL SURFACES TO UNLESS OTHERWISE NOTED		SIZE A3	PART NO. ING.6/8.7GLANDKA4	DESCRIPTION INITIAL	

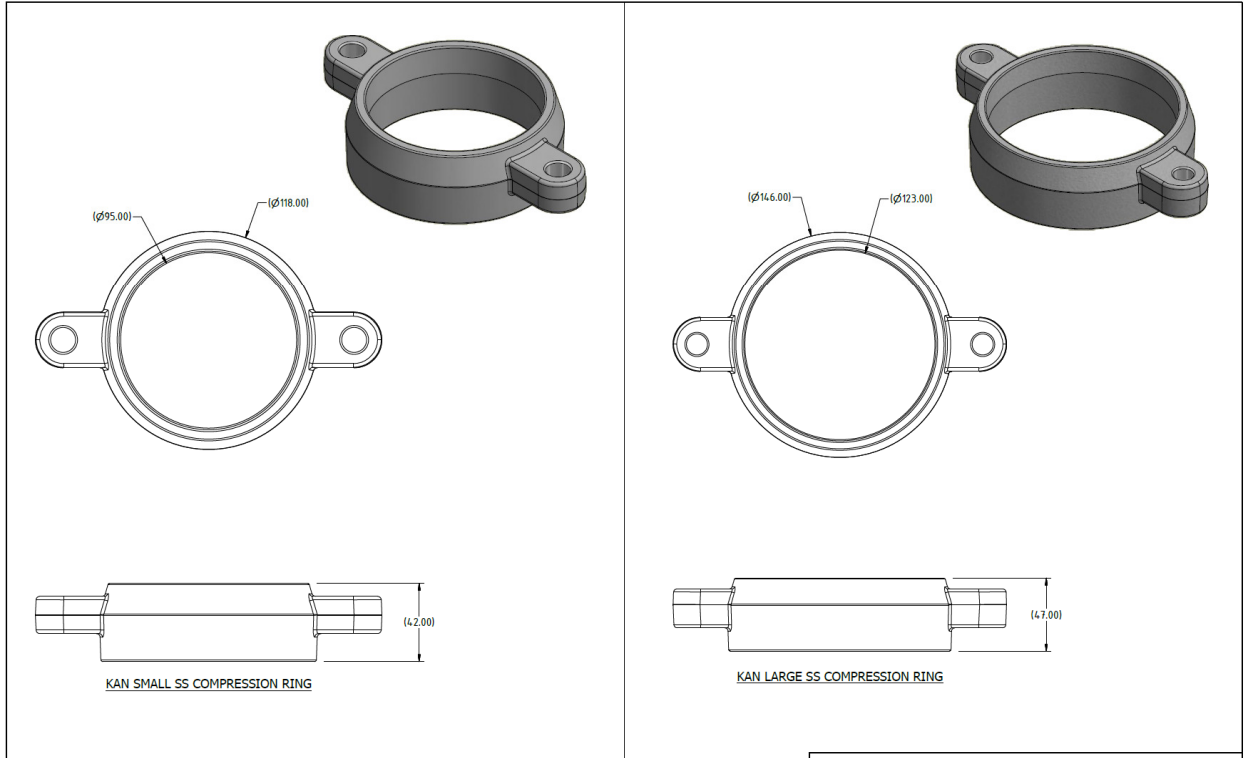




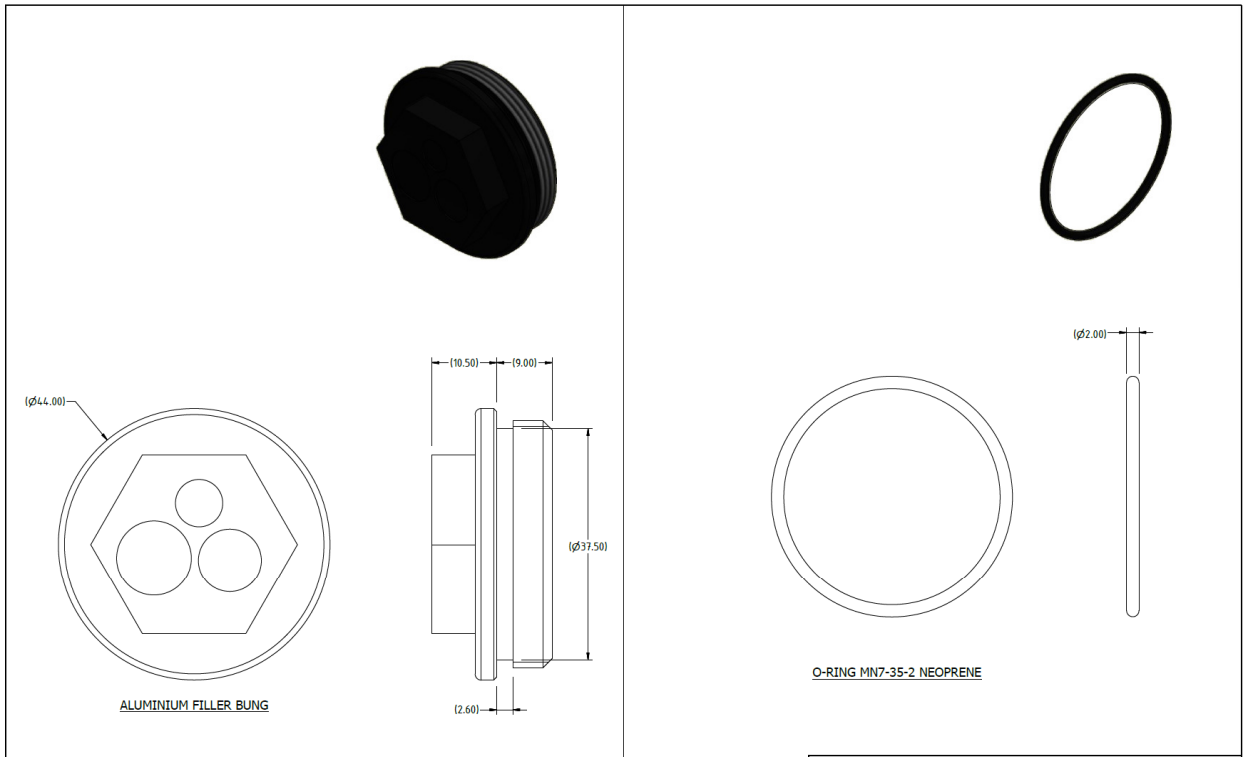
AusProof PTY LTD		DRAWN BY D.MINENKO	PART NAME 6.6-8.7 kV GLAND KAN EXPLODED VIEW		
© COPYRIGHT RESERVED		APPROVED BY C.TAYLOR	DRAWN DATE 11/01/2022	SURFACE FINISH	
DIMENSIONS (Metric millimetre-mm)		SHEET 3 OF 6	DRAWING NOT TO SCALE	REVISION HISTORY	
UNLESS OTHERWISE SPECIFIED		SIZE A3	Request Dimensions if in Doubt	REV 1	DESCRIPTION INITIAL
ALL SURFACES TO UNLESS OTHERWISE NOTED			MATERIAL	DATE 29/11/2023	



AusProof PTY LTD		DRAWN BY D.MINENKO	PART NAME 6.6-8.7 kV GLAND KAN EXPLODED VIEW		
© COPYRIGHT RESERVED		APPROVED BY C.TAYLOR	DRAWN DATE 11/01/2022	SURFACE FINISH	
DIMENSIONS (Metric millimetre-mm)		SHEET 4 OF 6	DRAWING NOT TO SCALE	REVISION HISTORY	
UNLESS OTHERWISE SPECIFIED		SIZE A3	Request Dimensions if in Doubt	REV 1	DESCRIPTION INITIAL
ALL SURFACES TO UNLESS OTHERWISE NOTED			MATERIAL	DATE 29/11/2023	



AusProof PTY LTD		DRAWN BY D.MINENKO	PART NAME 6.6-8.7 kV GLAND KAN EXPLODED VIEW	SURFACE FINISH	
© COPYRIGHT RESERVED		APPROVED BY C.TAYLOR	DRAWN DATE 11/01/2022	REVISION HISTORY	
COMDIMENSIONS (Metric-millimeter-mm) UNLESS OTHERWISE SPECIFIED	ENG DWG	SHEET 5 OF 6	DRAWING NOT TO SCALE Request Dimensions if in Doubt	REV	DESCRIPTION
ALL SURFACES TO UNLESS OTHERWISE NOTED	X.X 0.1 X.XX 0.05	SIZE A3	PART NO. IN6.6/8.7GLANDKAN4	1	INITIAL
					DATE 29/11/2023



AusProof PTY LTD		DRAWN BY D.MINENKO	PART NAME 6.6-8.7 kV GLAND KAN EXPLODED VIEW	SURFACE FINISH	
© COPYRIGHT RESERVED		APPROVED BY C.TAYLOR	DRAWN DATE 11/01/2022	REVISION HISTORY	
COMDIMENSIONS (Metric-millimeter-mm) UNLESS OTHERWISE SPECIFIED	ENG DWG	SHEET 6 OF 6	DRAWING NOT TO SCALE Request Dimensions if in Doubt	REV	DESCRIPTION
ALL SURFACES TO UNLESS OTHERWISE NOTED	X.X 0.1 X.XX 0.05	SIZE A3	PART NO. IN6.6/8.7GLANDKAN5	1	INITIAL
					DATE 29/11/2023