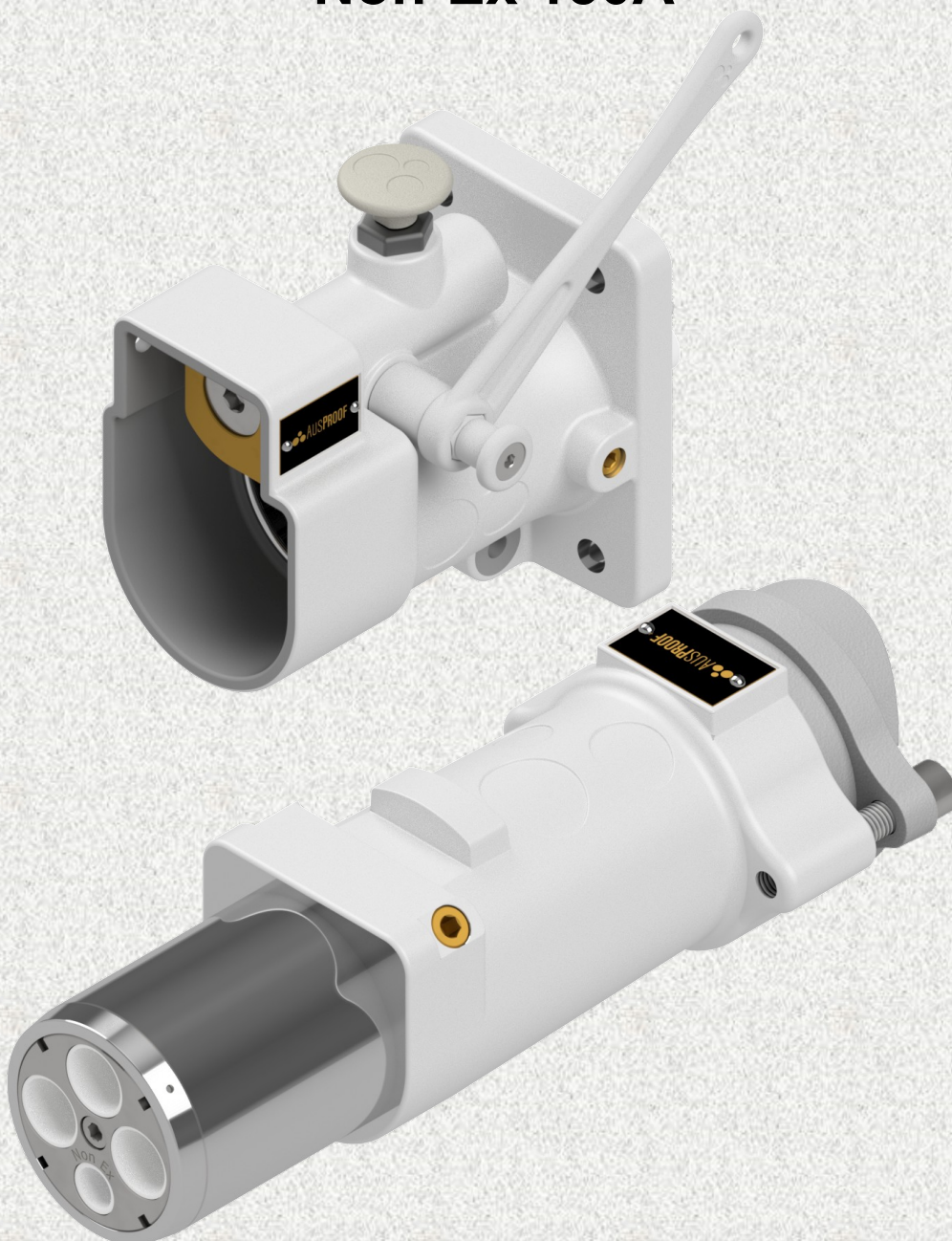




**Restrained Plugs And Receptacles**

**AS Range  
Non-Ex 150A**





## Index

### Description

#### Non-Ex AS 660V 150Amp

660V 150A Plug  
660V 150A Receptacle  
660V 150A Receptacle Gland Bracket (RGB)  
660V 150A Back to Back (B2B)

#### Non-Ex AS 1100V 150Amp

1100V 150A Plug  
1100V 150A Receptacle  
1100V 150A Receptacle Gland Bracket (RGB)  
1100V 150A Back to Back (B2B)

#### Termination Procedures

660V/1100V 150A Plug  
660V/1100V 150A Receptacle  
660V/1100V 150A Receptacle Gland Bracket (RGB)

# Non-Ex 660V 150A AS Plug

3 Phase 1 Pilot



Pre-Built to Suit Cable Type



| Plug Type to Suit Cable Type |       |        |       |        |
|------------------------------|-------|--------|-------|--------|
| (mm <sup>2</sup> )           | *Ref. | 241.1  | *Ref. | 275.1  |
| 16                           | -     | -      | (E)   | RS3202 |
| 25                           | (F)   | RS3197 | (E)   | RS3203 |
| 35                           | (G)   | RS3198 | (F)   | RS3204 |
| 50                           | (H)   | RS3199 | (G)   | RS3205 |
| 70                           | (I)   | RS3200 | -     | -      |
| 95                           | (J)   | RS3201 | -     | -      |

\*Gland Reference Letter

Part Breakdown For Customised Cables; One of Each Type Required



| 12/20 Style Tube Contact Sets |         |           |
|-------------------------------|---------|-----------|
| (mm <sup>2</sup> )            | ID (mm) | Stock No. |
| 10                            | 4.7     | RS2361    |
| 16                            | 6.5     | RS2229    |
| 25                            | 7.5     | RS1597    |
| 35                            | 9       | RS1598    |
| 50                            | 10.5    | RS1599    |
| 70                            | 12.5    | RS1600    |
| 95                            | 14      | RS1601    |

2 AS Front Cage  
Stock No: RS3206



3 AS 660V 150A Plug Body  
Stock No: RS3207



| Compression Gland |          |           |
|-------------------|----------|-----------|
| *Ref              | Gland ID | Stock No. |
| (A)               | 10-15    | RS2216    |
| (B)               | 15-20    | RS2217    |
| (C)               | 20-25    | RS2218    |
| (D)               | 25-30    | RS2219    |
| (E)               | 30-35    | RS2220    |
| (F)               | 35-40    | RS1592    |
| (G)               | 40-45    | RS1593    |
| (H)               | 45-50    | RS1594    |
| (I)               | 50-55    | RS1595    |
| (J)               | 55-60    | RS1596    |

\*Gland Reference Letter



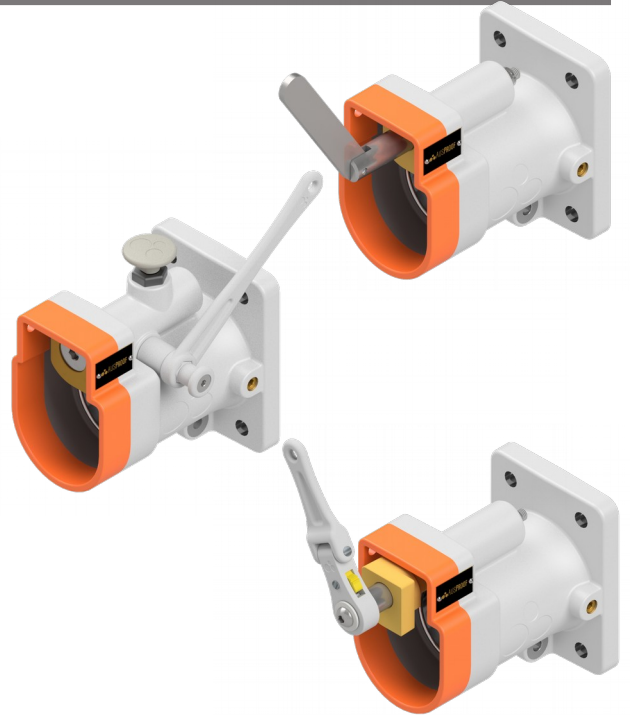
Pilot Orientation

# Non-Ex 660V 150A AS Receptacle

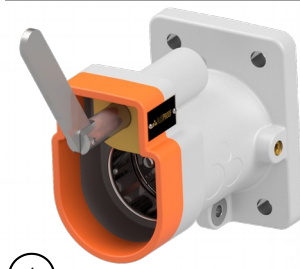
## 3 Phase 1 Pilot




| Receptacle Type to Suit mm <sup>2</sup> Cable Tails |           |                 |                   |
|---|-----------|-----------------|-------------------|
| (mm <sup>2</sup> )                                  | (Jack In) | (Quick Release) | (Ratchet Release) |
| 25  | RS3208    | RS3208QR        | RS3208RR          |
| 35  | RS3209    | RS3209QR        | RS3209RR          |
| 50  | RS3210    | RS3210QR        | RS3210RR          |
| 70  | RS3211    | RS3211QR        | RS3211RR          |
| 95  | RS3212    | RS3212QR        | RS3212RR          |




### Part Breakdown For Customised Cables; One of Each Type Required




① AS 660V 150A Receptacle Body  
Stock No: RS3214



① AS 660V 150A Receptacle Body (Quick Release)  
Stock No: RS3214QR

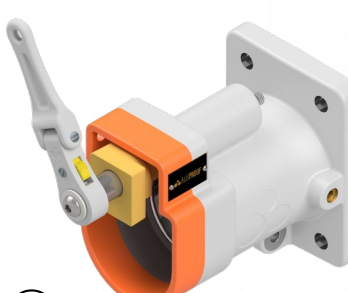


②



③ AS Receptacle Cage + Insulator Set  
Stock No: RS3213

| 12 / 68 Style Pins Contact Sets |         |           |
|---------------------------------|---------|-----------|
| (mm <sup>2</sup> )              | ID (mm) | Stock No. |
| 10                              | 4.7     | RS2362    |
| 16                              | 6.5     | RS2363    |
| 25                              | 7.5     | RS1612    |
| 35                              | 9       | RS1613    |
| 50                              | 10.5    | RS1614    |
| 70                              | 12.5    | RS1615    |
| 95                              | 14      | RS1616    |

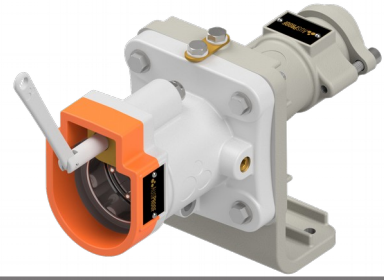


① AS 660V 150A Receptacle Body (Ratchet Release)  
Stock No: RS3214RR

Non-Ex 660V 150A

Receptacle Gland Bracket (RGB)

3 Phase 1 Pilot



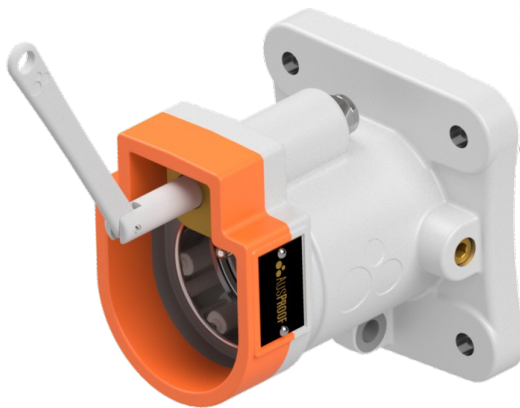
Pre-Built to Suit Cable Type

| Complete Receptacle Gland Bracket to Suit Cable Type |      |         |               |                 |       |         |               |                 |
|--|------|---------|---------------|-----------------|-------|---------|---------------|-----------------|
| (mm <sup>2</sup> )                                   | *Ref | 241.1   |               |                 | *Ref. | 275.1   |               |                 |
|  |      | Jack In | Quick Release | Ratchet Release |       | Jack In | Quick release | Ratchet Release |
| 16   | -    | -       | -             | -               | (E)   | RS3220  | RS3220QR      | RS3220RR        |
| 25   | (F)  | RS3215  | RS3215QR      | RS3215RR        | (E)   | RS3221  | RS3221QR      | RS3221RR        |
| 35   | (G)  | RS3216  | RS3216QR      | RS3216RR        | (F)   | RS3222  | RS3222QR      | RS3222RR        |
| 50   | (H)  | RS3217  | RS3217QR      | RS3217RR        | (G)   | RS3223  | RS3223QR      | RS3223RR        |
| 70   | (I)  | RS3218  | RS3218QR      | RS3218RR        | -     | -       | -             | -               |
| 95   | (J)  | RS3219  | RS3219QR      | RS3219RR        | -     | -       | -             | -               |

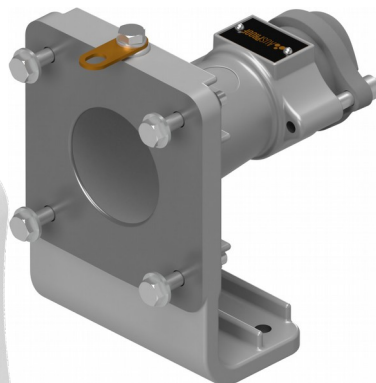
\*Gland Reference Letter

Part Breakdown For Customised Cables; One of Each Type Required

1 AS 660V 150A Receptacle  
Stock No: Refer to Page 4



2 AS Gland Bracket Body Kit  
Stock No: RS2508



3



| Compression Gland |          |           |
|-------------------|----------|-----------|
| *Ref.             | Gland ID | Stock No. |
| (A)               | 10-15    | RS2216    |
| (B)               | 15-20    | RS2217    |
| (C)               | 20-25    | RS2218    |
| (D)               | 25-30    | RS2219    |
| (E)               | 30-35    | RS2220    |
| (F)               | 35-40    | RS1592    |
| (G)               | 40-45    | RS1593    |
| (H)               | 45-50    | RS1594    |
| (I)               | 50-55    | RS1595    |
| (J)               | 55-60    | RS1596    |

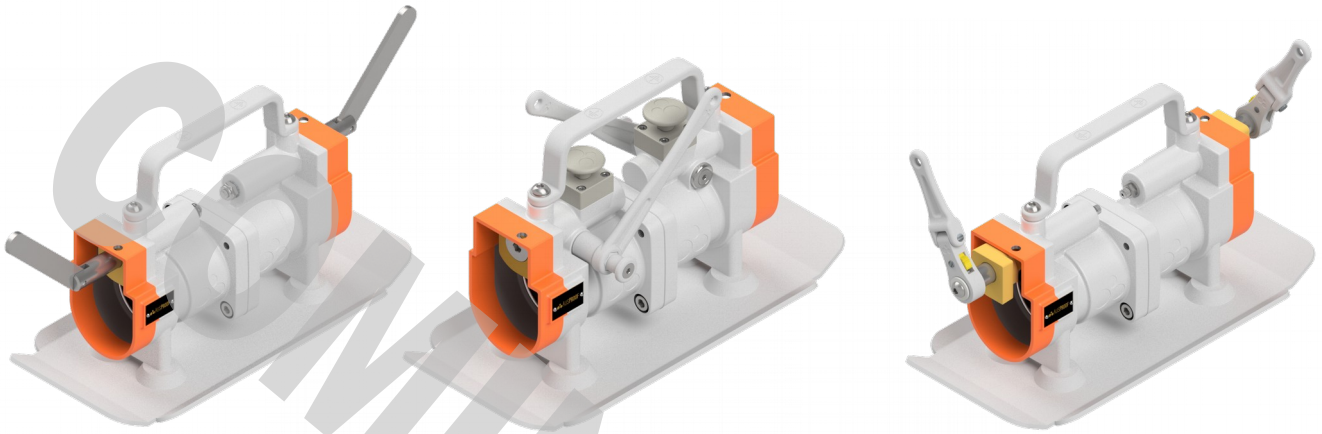
\*Gland Reference Letter

# Non-Ex 660V 150A Back To Back (B2B)

3 Phase 1 Pilot

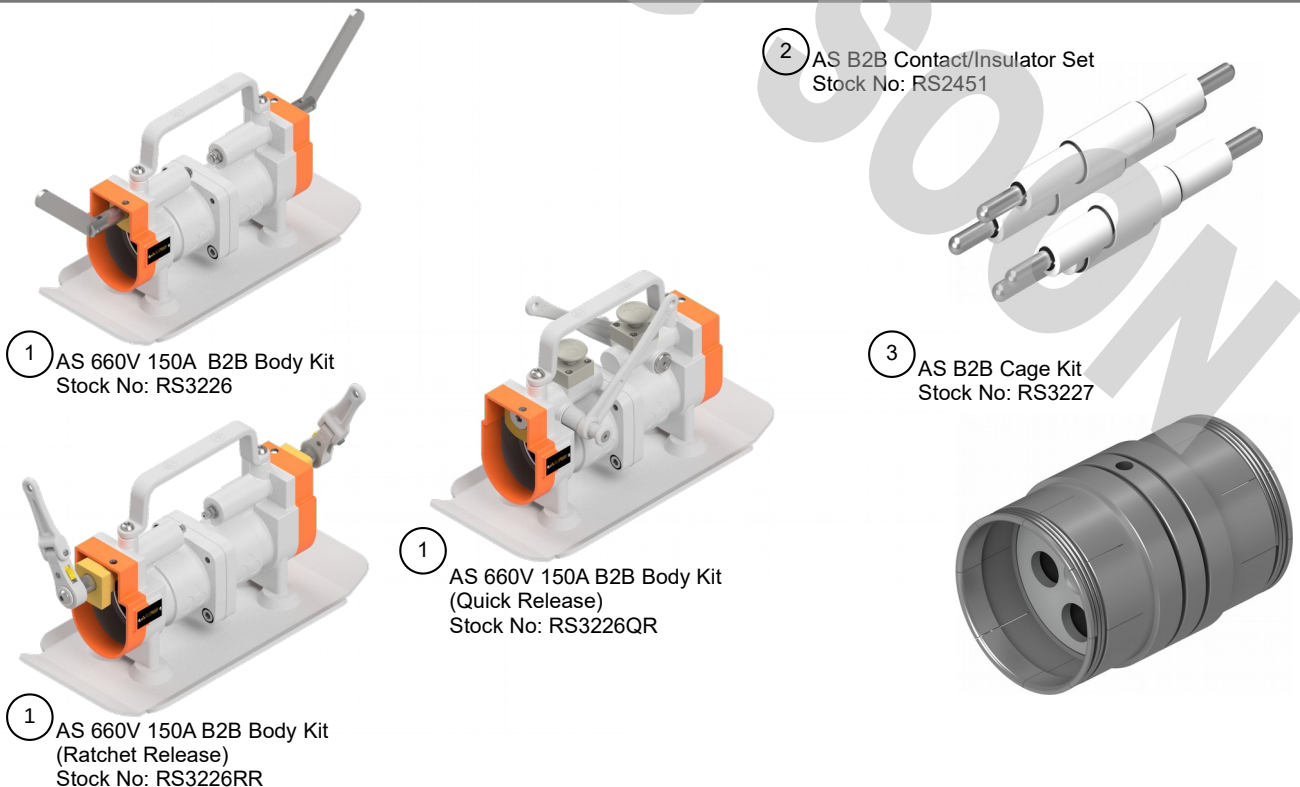
Pilot Orientation

**Flameproof Range Available NOW! 100% Compatible With New AL Range. See website for Tech Manual #473**



| Complete Back to Back |               |                 |
|-----------------------|---------------|-----------------|
| Jack In               | Quick Release | Ratchet Release |
| Stock No: RS3225      | RS3225QR      | RS3225RR        |

## Part Breakdown For Customised Cables; One of Each Type Required



# Non-Ex 1100V 150A AS Plug

3 Phase 1 Pilot



Pre-Built to Suit Cable Type



| Complete Plug to Suit Cable Type |       |        |       |        |
|----------------------------------|-------|--------|-------|--------|
| (mm <sup>2</sup> )               | *Ref. | 241.1  | *Ref. | 275.1  |
| 16                               | -     | -      | (E)   | RS3234 |
| 25                               | (F)   | RS3229 | (E)   | RS3235 |
| 35                               | (G)   | RS3230 | (F)   | RS3236 |
| 50                               | (H)   | RS3231 | (G)   | RS3237 |
| 70                               | (I)   | RS3232 | -     | -      |
| 95                               | (J)   | RS3233 | -     | -      |

\*Gland Reference Letter

Part Breakdown For Customised Cables; One of Each Type Required

1



| 12 / 20 Style Tube Contact Sets |         |           |
|---------------------------------|---------|-----------|
| (mm <sup>2</sup> )              | ID (mm) | Stock No. |
| 10                              | 4.7     | RS2361    |
| 16                              | 6.5     | RS2229    |
| 25                              | 7.5     | RS1597    |
| 35                              | 9       | RS1598    |
| 50                              | 10.5    | RS1599    |
| 70                              | 12.5    | RS1600    |
| 95                              | 14      | RS1601    |

2

Front Cage  
Stock No: RS3206



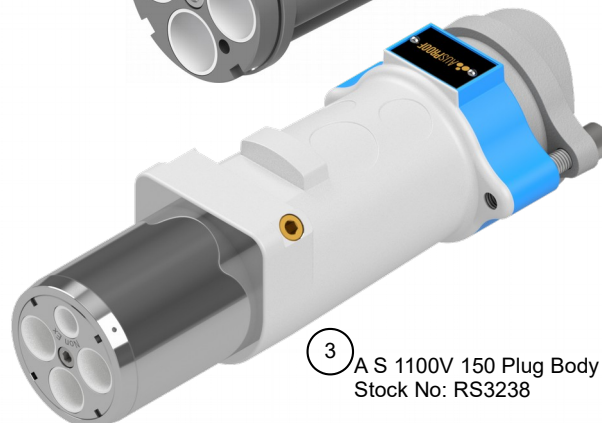
4



| Compression Gland |          |           |
|-------------------|----------|-----------|
| *Ref.             | Gland ID | Stock No. |
| (A)               | 10-15    | RS2216    |
| (B)               | 15-20    | RS2217    |
| (C)               | 20-25    | RS2218    |
| (D)               | 25-30    | RS2219    |
| (E)               | 30-35    | RS2220    |
| (F)               | 35-40    | RS1592    |
| (G)               | 40-45    | RS1593    |
| (H)               | 45-50    | RS1594    |
| (I)               | 50-55    | RS1595    |
| (J)               | 55-60    | RS1596    |

3

A S 1100V 150 Plug Body  
Stock No: RS3238



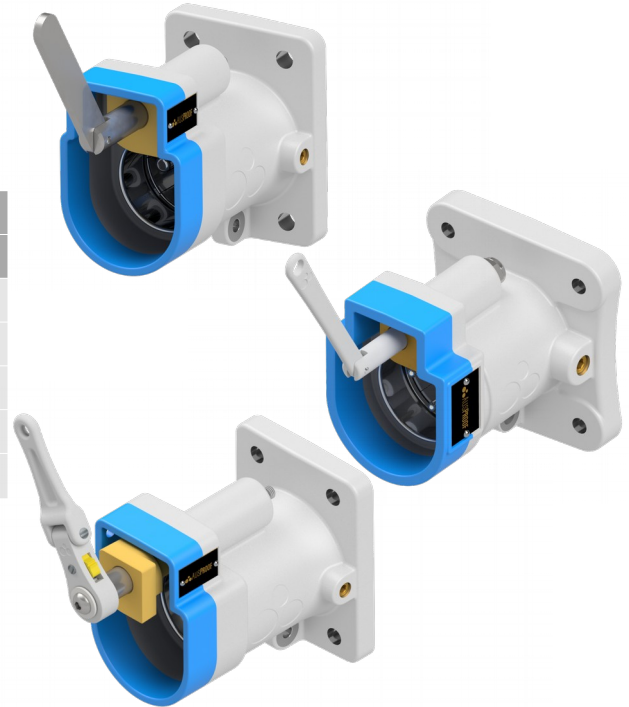
\*Gland Reference Letter



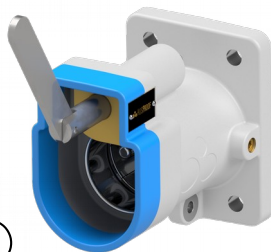
# Non-Ex 1100V 150A AS Receptacle

## 3 Phase 1 Pilot

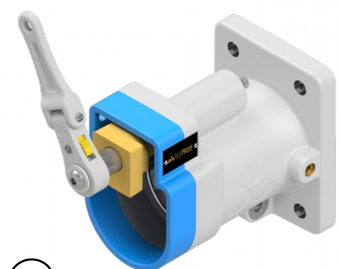
| Receptacle Type to Suit mm <sup>2</sup> Cable Tails |           |                 |                   |
|---|-----------|-----------------|-------------------|
| (mm <sup>2</sup> )                                  | (Jack In) | (Quick Release) | (Ratchet Release) |
| 25  | RS3239    | RS3239QR        | RS3239RR          |
| 35  | RS3240    | RS3240QR        | RS3240RR          |
| 50  | RS3241    | RS3241QR        | RS3241RR          |
| 70  | RS3242    | RS3242QR        | RS3242RR          |
| 95  | RS3243    | RS3243QR        | RS3243RR          |



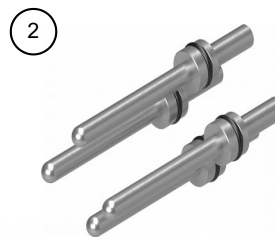
1 AS 1100V 150A Receptacle Body  
Stock No: RS3244



1 AS 1100V 150A Receptacle Body  
(Quick Release)  
Stock No: RS3244QR



1 AS 1100V 150A Receptacle Body  
Ratchet Release  
Stock No: RS3244RR



3 AS Receptacle Cage  
Stock No: RS3213

| 12 / 68 Style Pins<br>Contact Sets. |            |           |
|-------------------------------------|------------|-----------|
| (mm <sup>2</sup> )                  | ID<br>(mm) | Stock No. |
| 10                                  | 4.7        | RS2362    |
| 16                                  | 6.5        | RS2363    |
| 25                                  | 7.5        | RS1612    |
| 35                                  | 9.0        | RS1613    |
| 50                                  | 10.5       | RS1614    |
| 70                                  | 12.5       | RS1615    |
| 95                                  | 14         | RS1616    |





Non-Ex 1100V 150A  
 Receptacle Gland Bracket (RGB)  
 3 Phase 1 Pilot



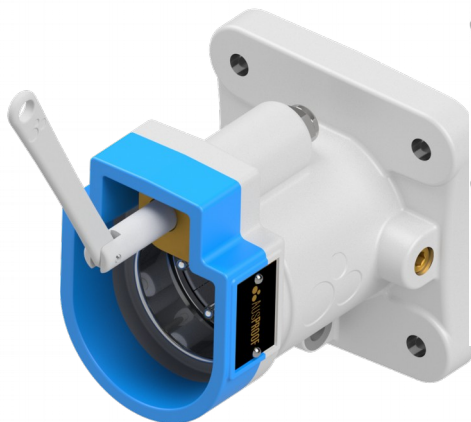
Pre-Built to Suit Cable Type

| Complete Receptacle Gland Bracket to Suit Cable Type |      |         |               |                 |       |         |               |                 |
|--|------|---------|---------------|-----------------|-------|---------|---------------|-----------------|
| (mm <sup>2</sup> )                                   | *Ref | 241.1   |               |                 | *Ref. | 275.1   |               |                 |
|  |      | Jack In | Quick Release | Ratchet Release |       | Jack In | Quick release | Ratchet Release |
| 16   | -    | -       | -             | -               | (E)   | RS3250  | RS3250QR      | RS3250RR        |
| 25   | (F)  | RS3245  | RS3245QR      | RS3245RR        | (E)   | RS3251  | RS3251QR      | RS3251RR        |
| 35   | (G)  | RS3246  | RS3246QR      | RS3246RR        | (F)   | RS3252  | RS3252QR      | RS3252RR        |
| 50   | (H)  | RS3333  | RS3333QR      | RS3333RR        | (G)   | RS3253  | RS3253QR      | RS3253RR        |
| 70   | (I)  | RS3334  | RS3334QR      | RS3334RR        | -     | -       | -             | -               |
| 95   | (J)  | RS3249  | RS3249QR      | RS3249RR        | -     | -       | -             | -               |

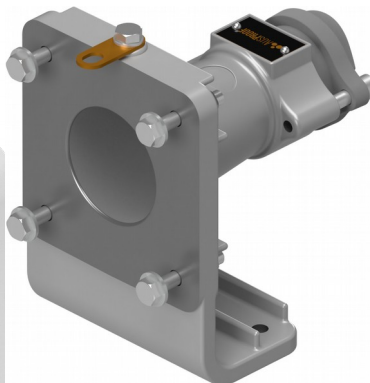
\*Gland Reference Letter

Part Breakdown For Customised Cables; One of Each Type Required

1 AS 1100V 150A Receptacle  
 Stock No: Refer to Page 8



2 AS Gland Bracket Body Kit  
 Stock No: RS2508



3



| Compression Gland |          |           |
|-------------------|----------|-----------|
| *Ref.             | Gland ID | Stock No. |
| (A)               | 10-15    | RS2216    |
| (B)               | 15-20    | RS2217    |
| (C)               | 20-25    | RS2218    |
| (D)               | 25-30    | RS2219    |
| (E)               | 30-35    | RS2220    |
| (F)               | 35-40    | RS1592    |
| (G)               | 40-45    | RS1593    |
| (H)               | 45-50    | RS1594    |
| (I)               | 50-55    | RS1595    |
| (J)               | 55-60    | RS1596    |

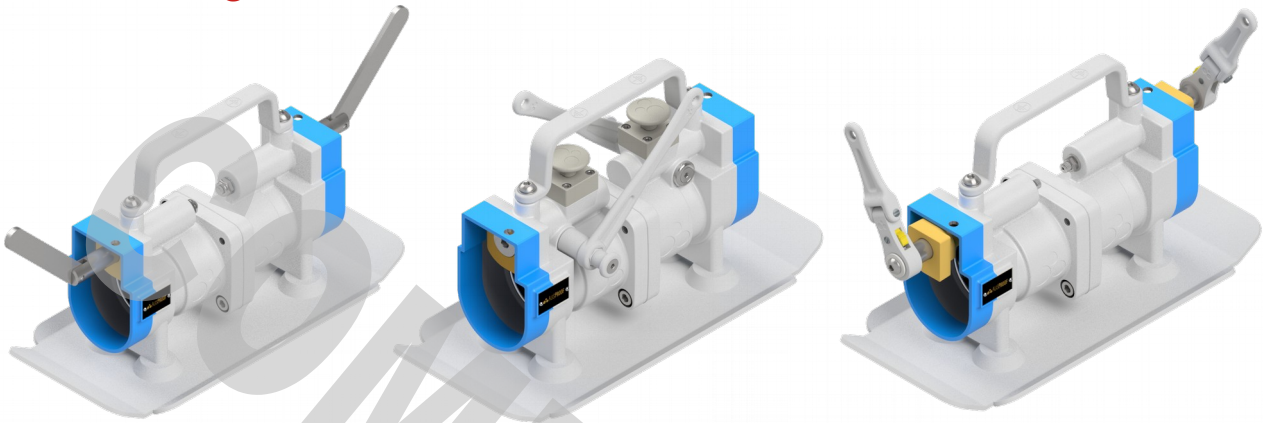
\*Gland Reference Letter

# Non-Ex 1100V 150A Back To Back (B2B)

3 Phase 1 Pilot

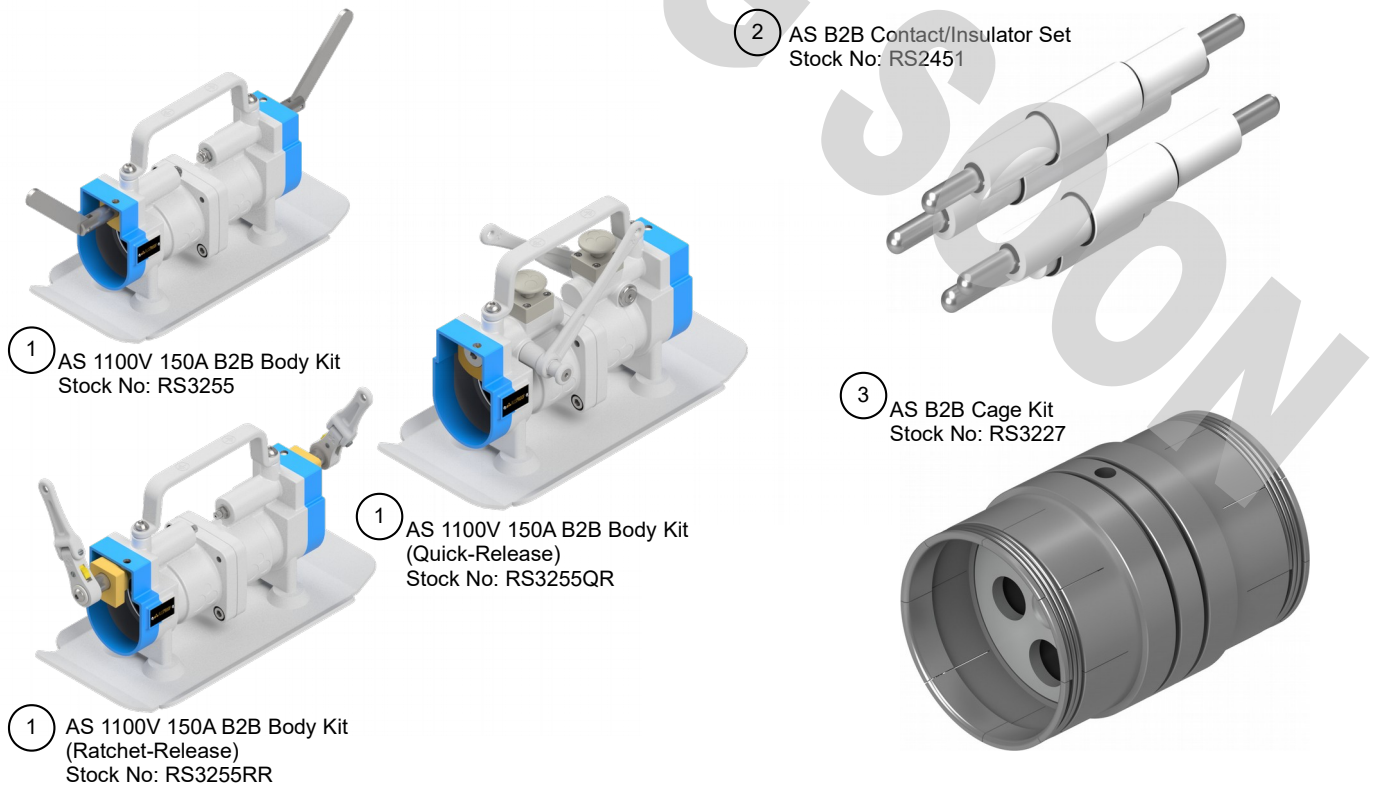
Pilot Orientation

**Flameproof Range Available NOW! 100% Compatible With New AL Range. See website for Tech Manual #473**



| Complete Back to Back |               |                 |
|-----------------------|---------------|-----------------|
| Jack In               | Quick Release | Ratchet Release |
| Stock No: RS3254      | RS3254QR      | RS3254RR        |

## Part Breakdown For Customised Cables; One of Each Type Required



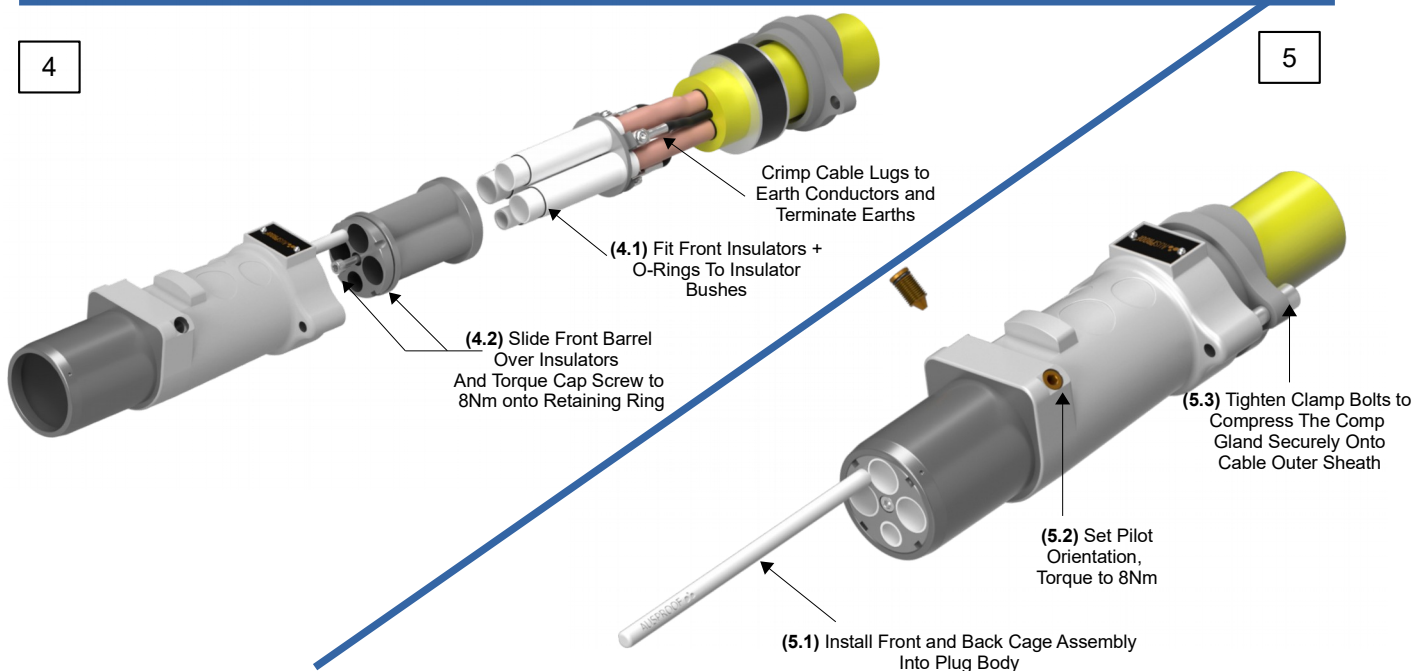
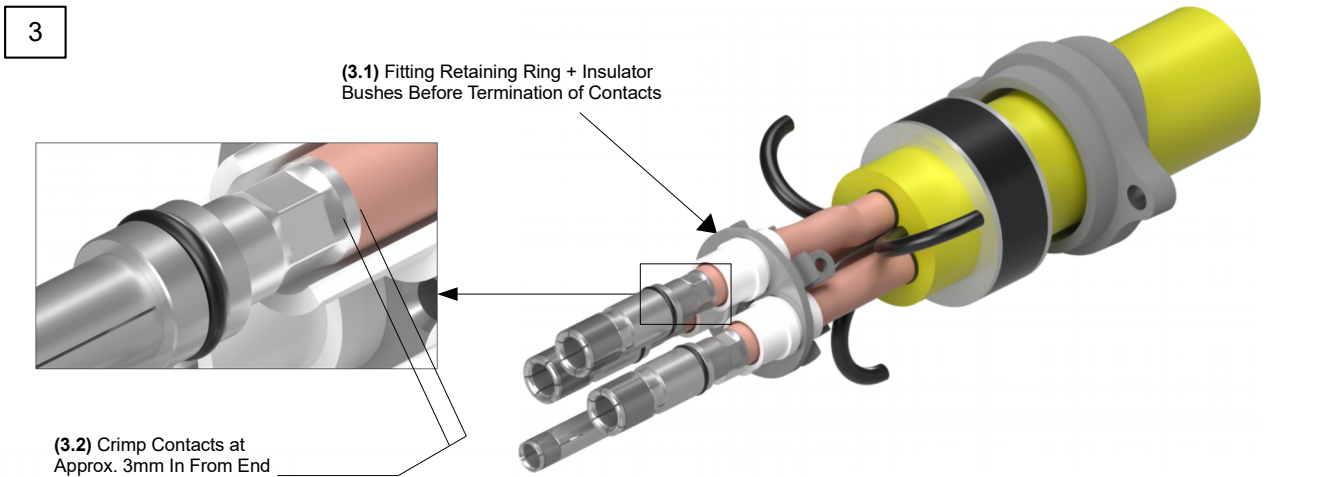
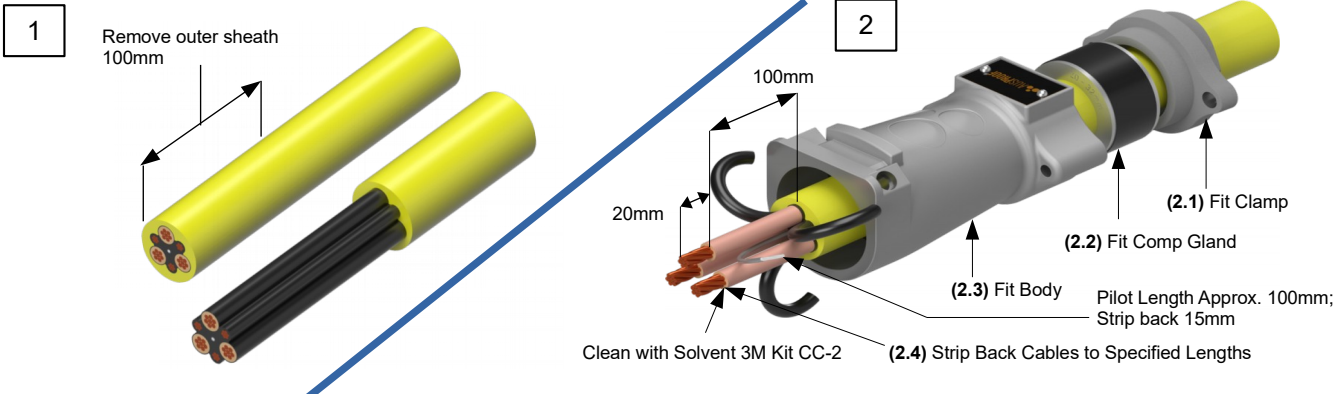
- 1 AS 1100V 150A B2B Body Kit  
Stock No: RS3255
- 1 AS 1100V 150A B2B Body Kit (Quick-Release)  
Stock No: RS3255QR
- 1 AS 1100V 150A B2B Body Kit (Ratchet-Release)  
Stock No: RS3255RR
- 2 AS B2B Contact/Insulator Set  
Stock No: RS2451
- 3 AS B2B Cage Kit  
Stock No: RS3227

## AS Range Termination Procedure

660/1100V 150A Plug; 3 Phase 1 Pilot



Pilot Orientation

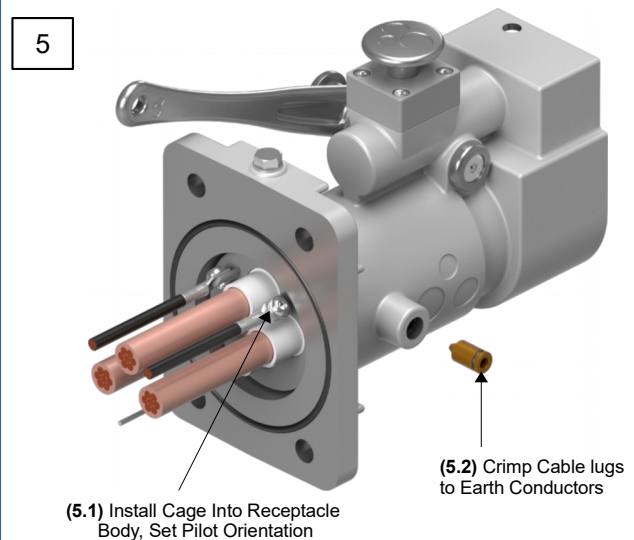
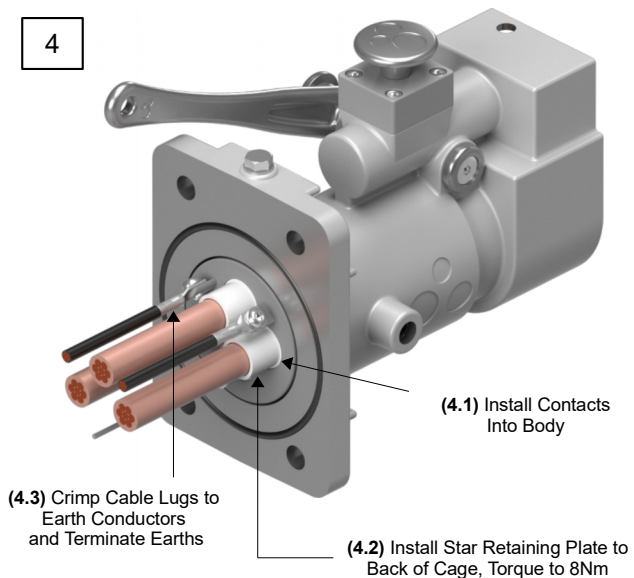
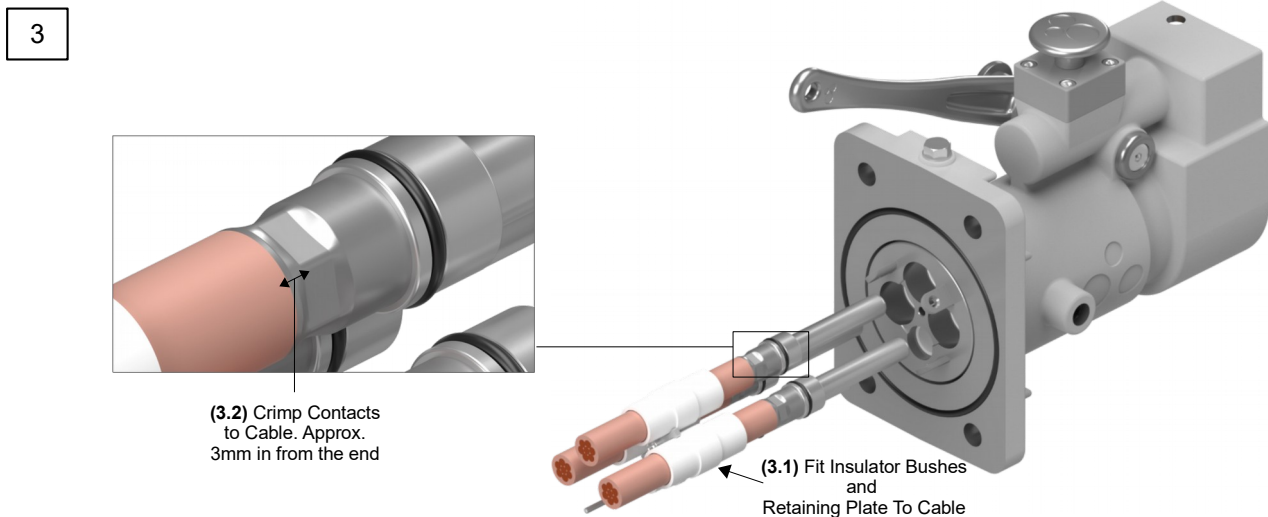
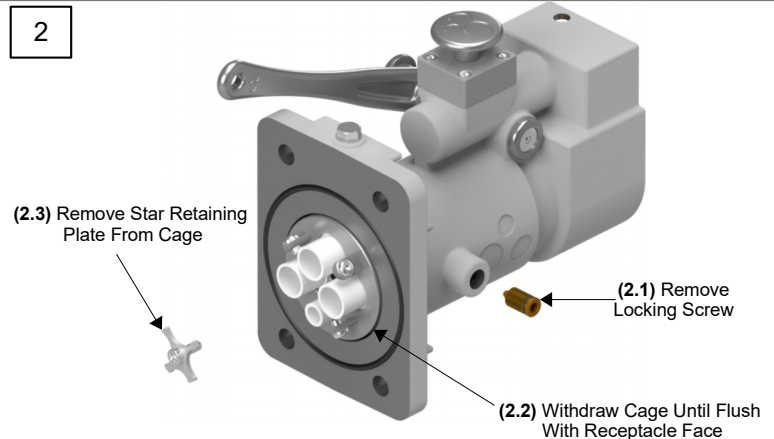
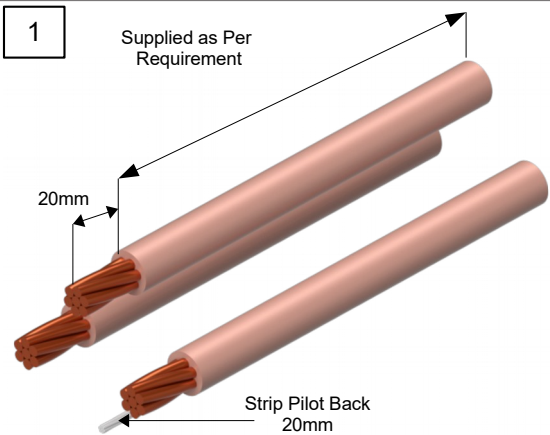


## AS Range Termination Procedure

660/1100V 150A Receptacle; 3 Phase 1 Pilot

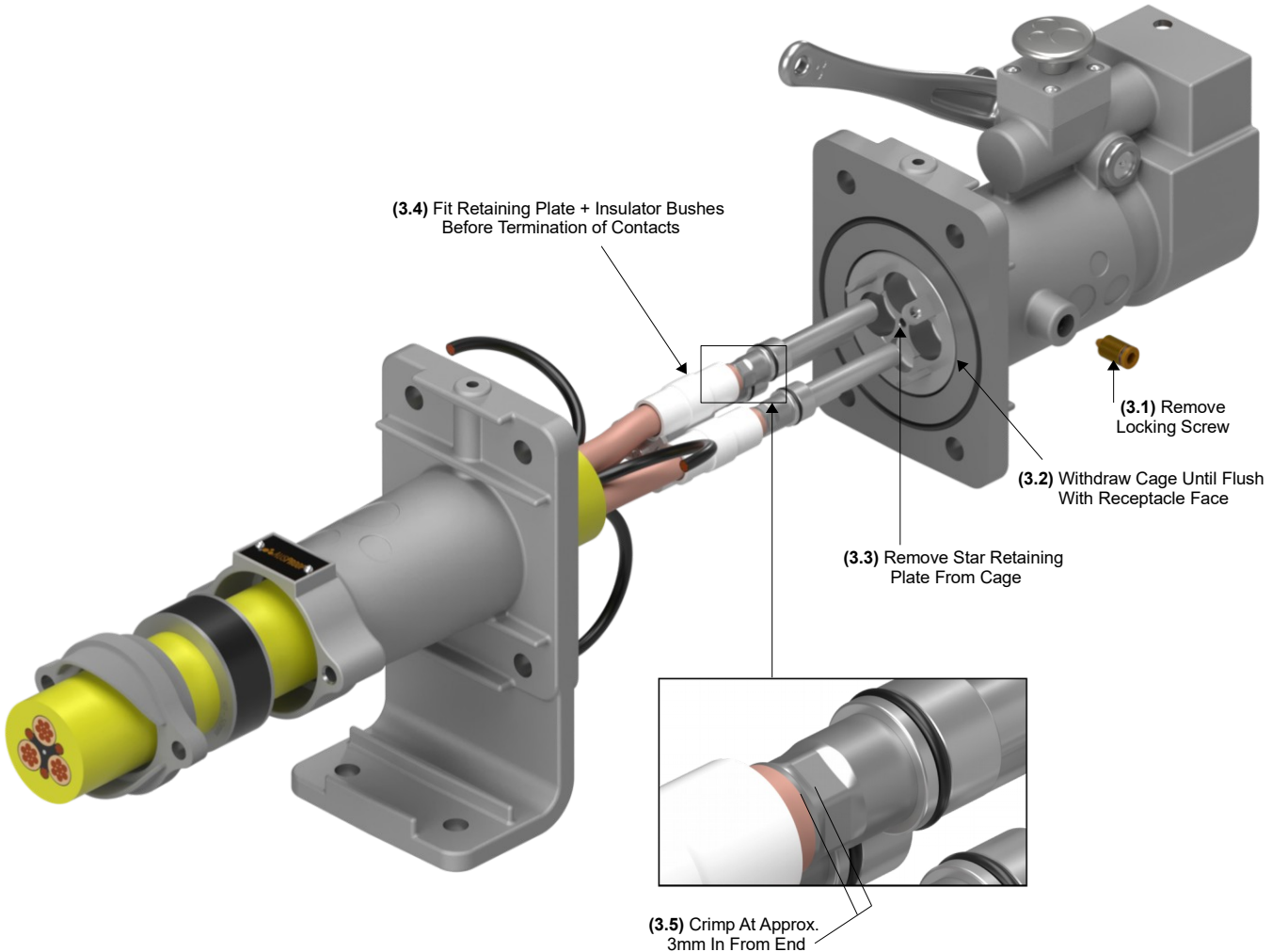
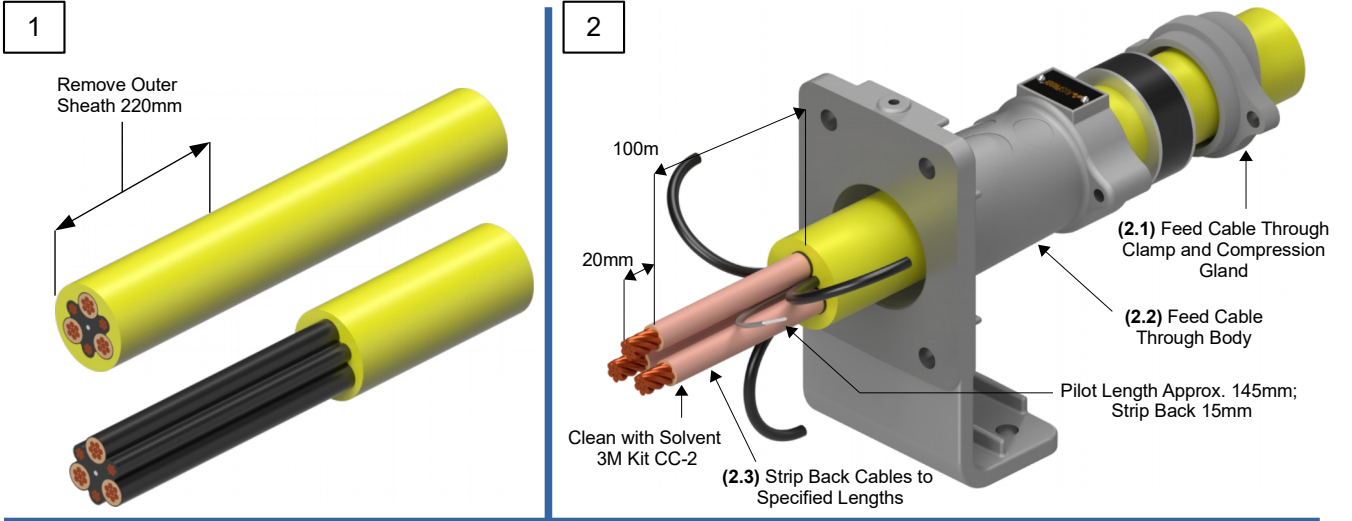


Pilot Orientation



# AS Range Termination Procedure

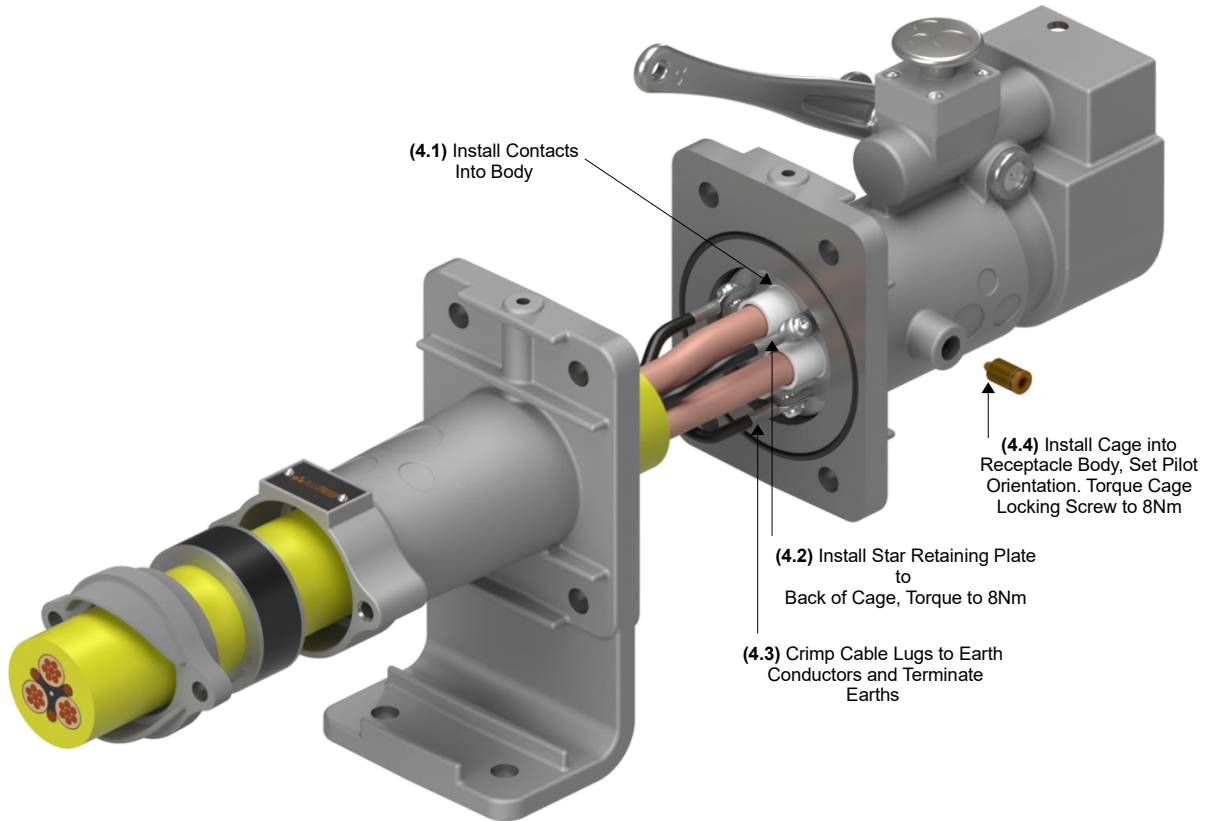
660/1100V 150A Receptacle Gland Bracket; 3 Phase 1 Pilot



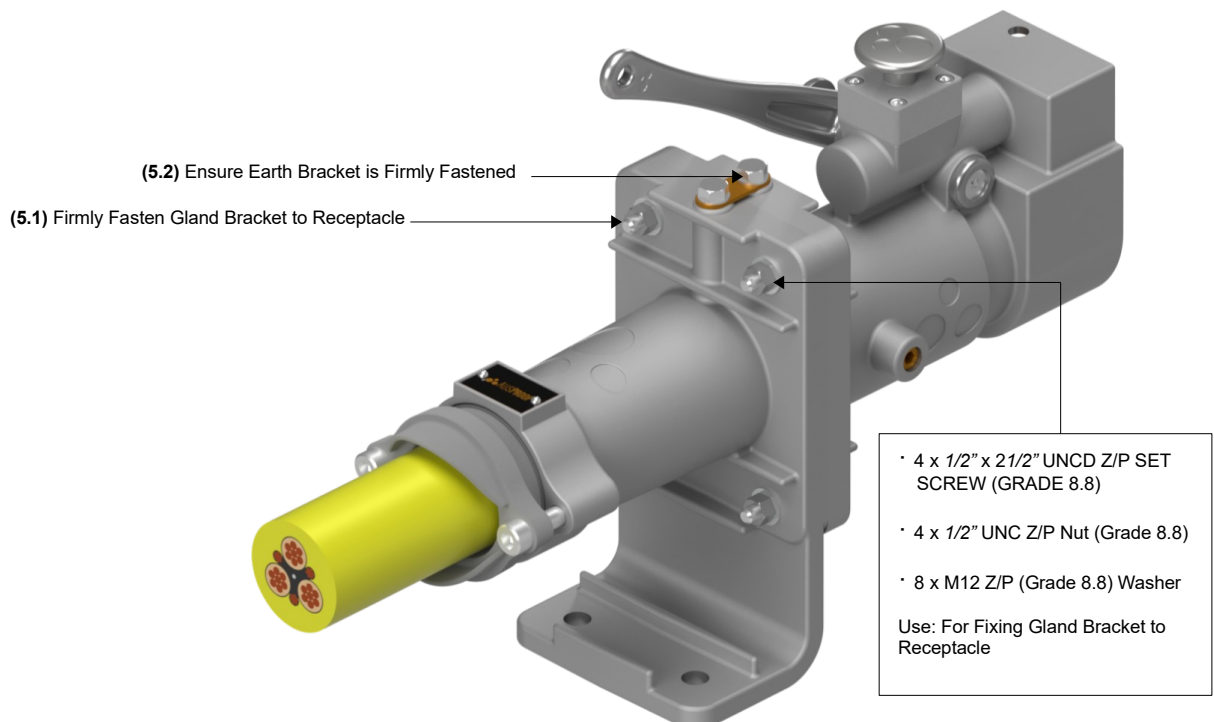
## AS Range Termination Procedure

660/1100V 150A Receptacle Gland Bracket; 3 Phase 1 Pilot

4



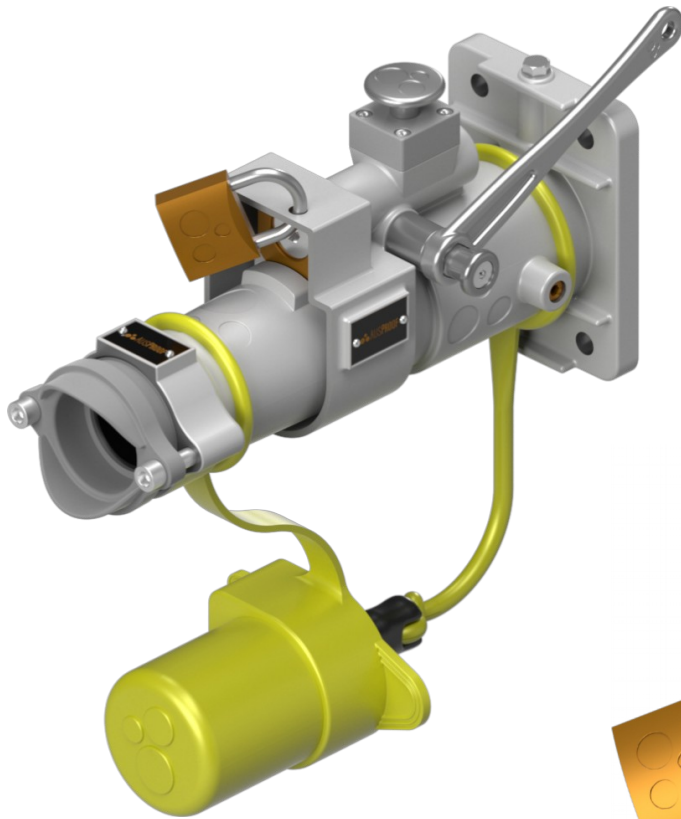
5



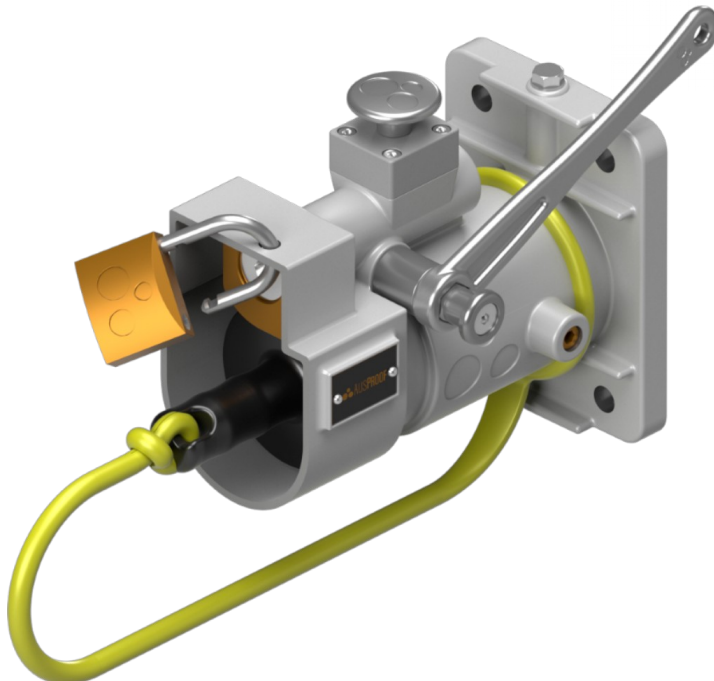
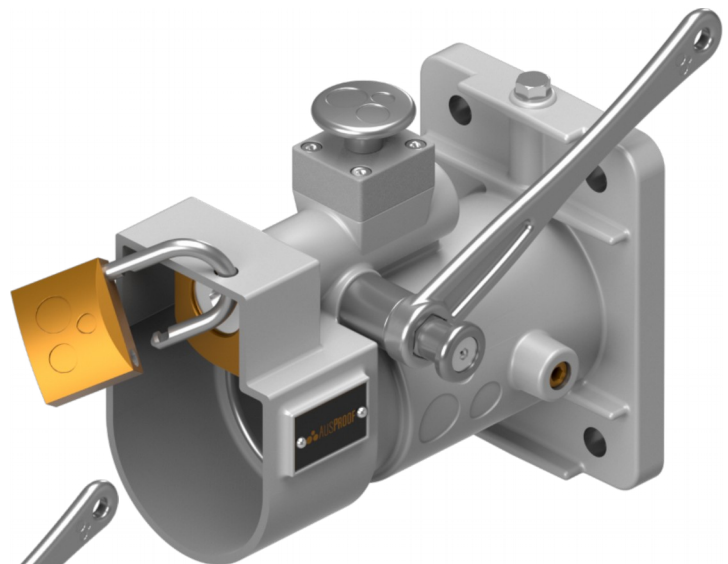
## AS Range Lockout Device Location

---

---



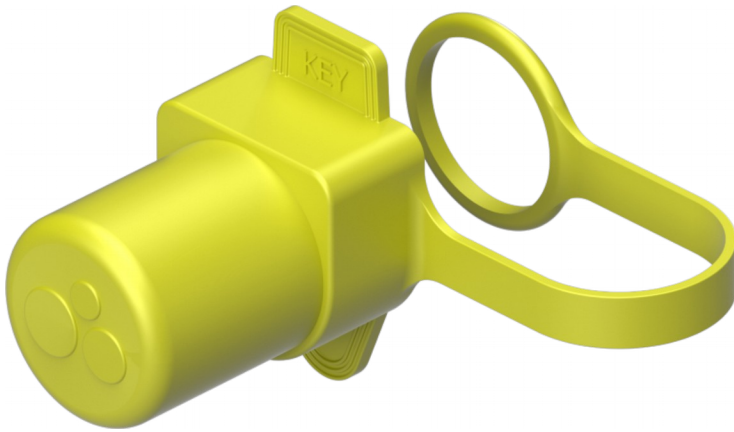
A Lockout Device May Be Fitted To Prevent the Plug Being Inserted



## AS Range Plug Accessories

---

---



150A  
Plug Cover  
Part No: 3199



Guide Stick  
Part No: 1766



## AS Range Receptacle Accessories

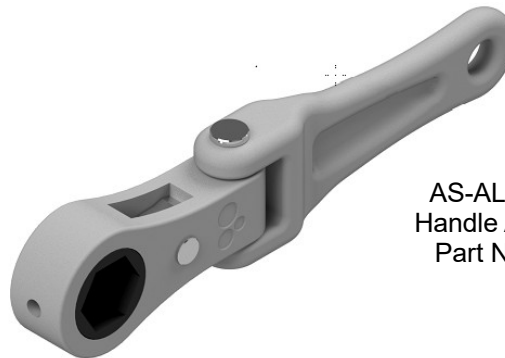
---

---

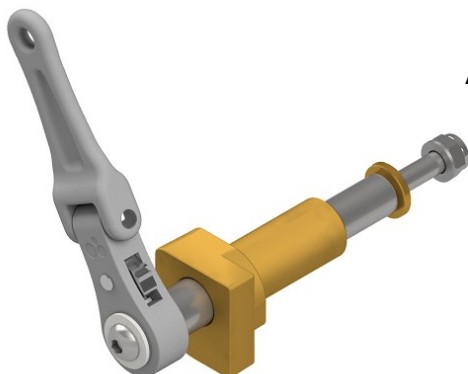
150A  
Receptacle Protective Bung  
Stock No: RS1768



AS-AL Ratchet  
Handle Assembly  
Part No: 2725



AS RR Style Pawl  
FULL Assembly  
Part No: RS3337



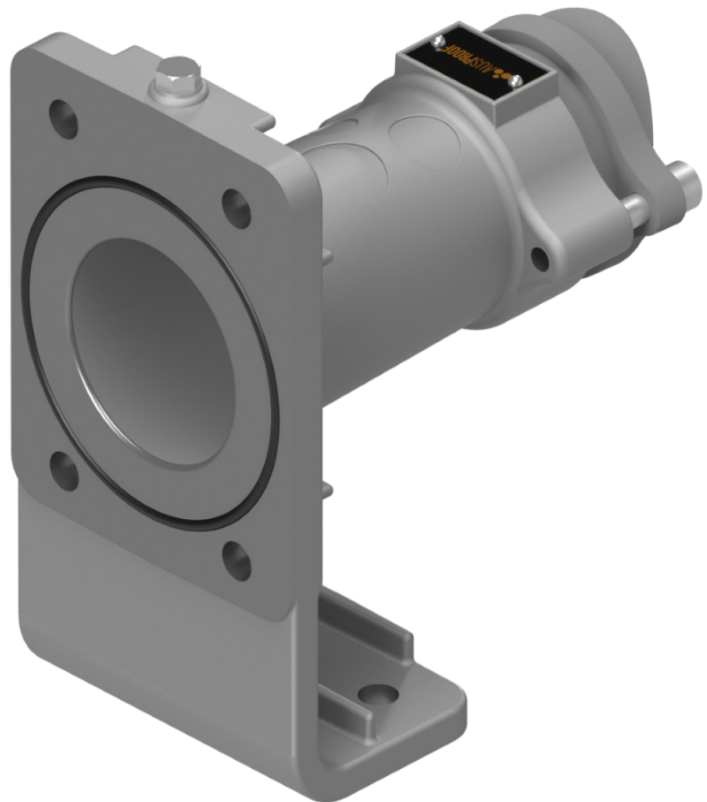
## AS Range Plug and Receptacle Accessories

---

---

Alternative Gland Mounting  
Added O-Ring

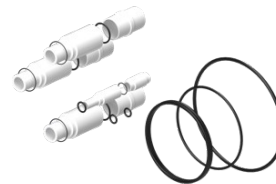
Not To Be Mounted To Receptacles  
Due To O-Ring Fitting



## AS Range Plug and Receptacle Accessories

OIF (O-Ring, Insulators, and Fasteners) Repair Kits for Plugs and Receptacles

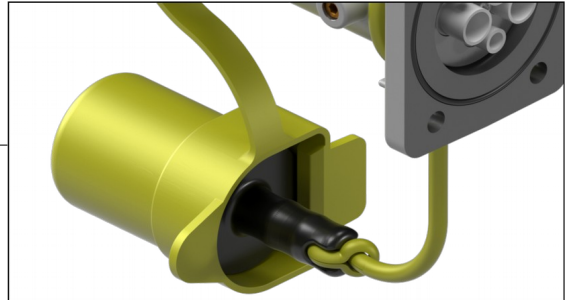
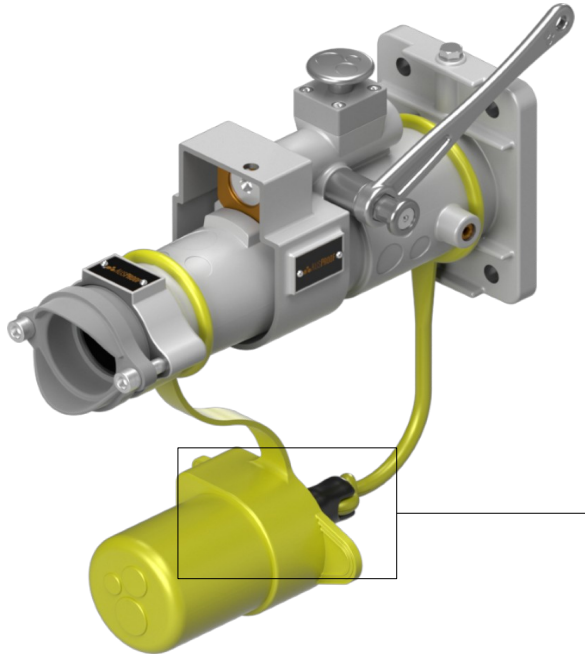
| OIF Repair Kits for Plugs   |            | Stock Number |
|---|------------|--------------|
| <b>660V 60A 4 Pin AS Plug, Contact and Insulator SET Style 12/20</b>  | 2.5 - 25mm | RS3341       |
| <b>1100V 60A 4 Pin AS Plug, Contact and Insulator SET Style 12/20</b> | 2.5 - 25mm | RS3341       |
| <b>660V 60A 4 Pin AS Plug, Contact and Insulator SET Style 12/20</b>  | 2.5 - 25mm | RS3341       |
| <b>1100V 60A 4 Pin AS Plug, Contact and Insulator SET Style 12/20</b> | 2.5 - 25mm | RS3341       |
| OIF Front Cage Repair Kit for Plugs                                   |            | Stock Number |
| 4 Pin Barrel (RS1804)   |            | RS1602       |



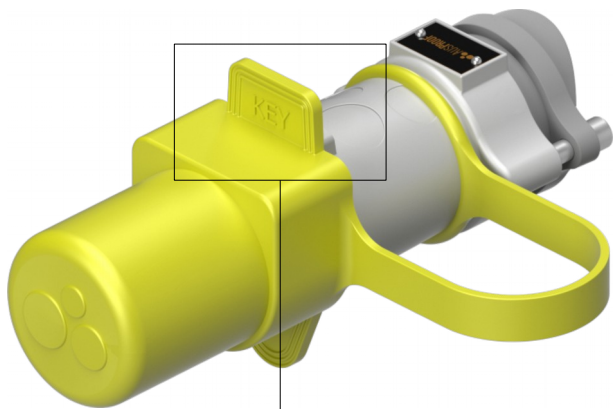
| OIF Repair Kits for Receptacles   |          | Stock Number |
|---|----------|--------------|
| <b>660V 60A 4 Pin AS Receptacle, Contact and Insulator SET Style 12/68</b>  | 10 -95mm | RS3342       |
| <b>1100V 60A 4 Pin AS Receptacle, Contact and Insulator SET Style 12/68</b> | 10 -95mm | RS3342       |
| <b>660V 60A 4 Pin AS Receptacle, Contact and Insulator SET Style 12/68</b>  | 10 -95mm | RS3342       |
| <b>1100V 60A 4 Pin AS Receptacle, Contact and Insulator SET Style 12/68</b> | 10 -95mm | RS3342       |
| OIF Cage Repair Kit for Receptacles   |          | Stock Number |
| 4 Pin Barrel (RS1806)   |          | RS1617       |

# AS Range Product Handling

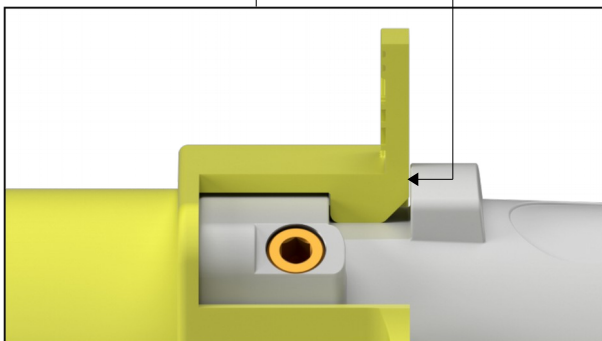
660/1100V 150A Plug And Receptacle



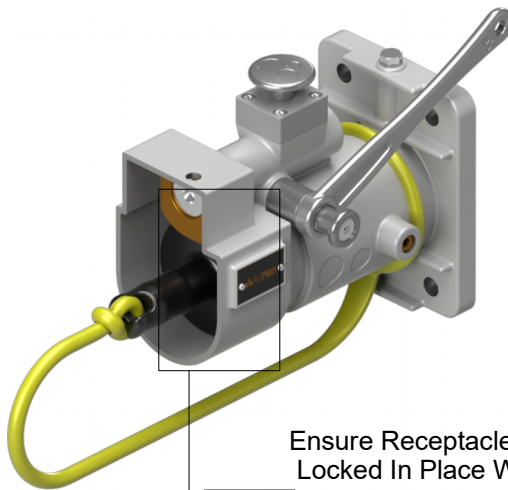
When Not In Use, Insert Receptacle Bung Into Silicone Plug Cover. Ensure Cap is Inserted Past the Rubber Key.



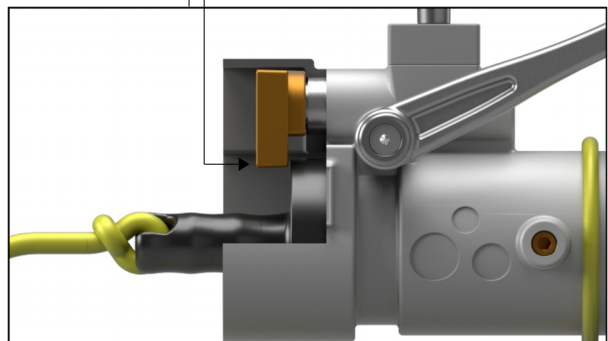
Ensure Key Is Engaged With Plug Body



Plug Key Engagement



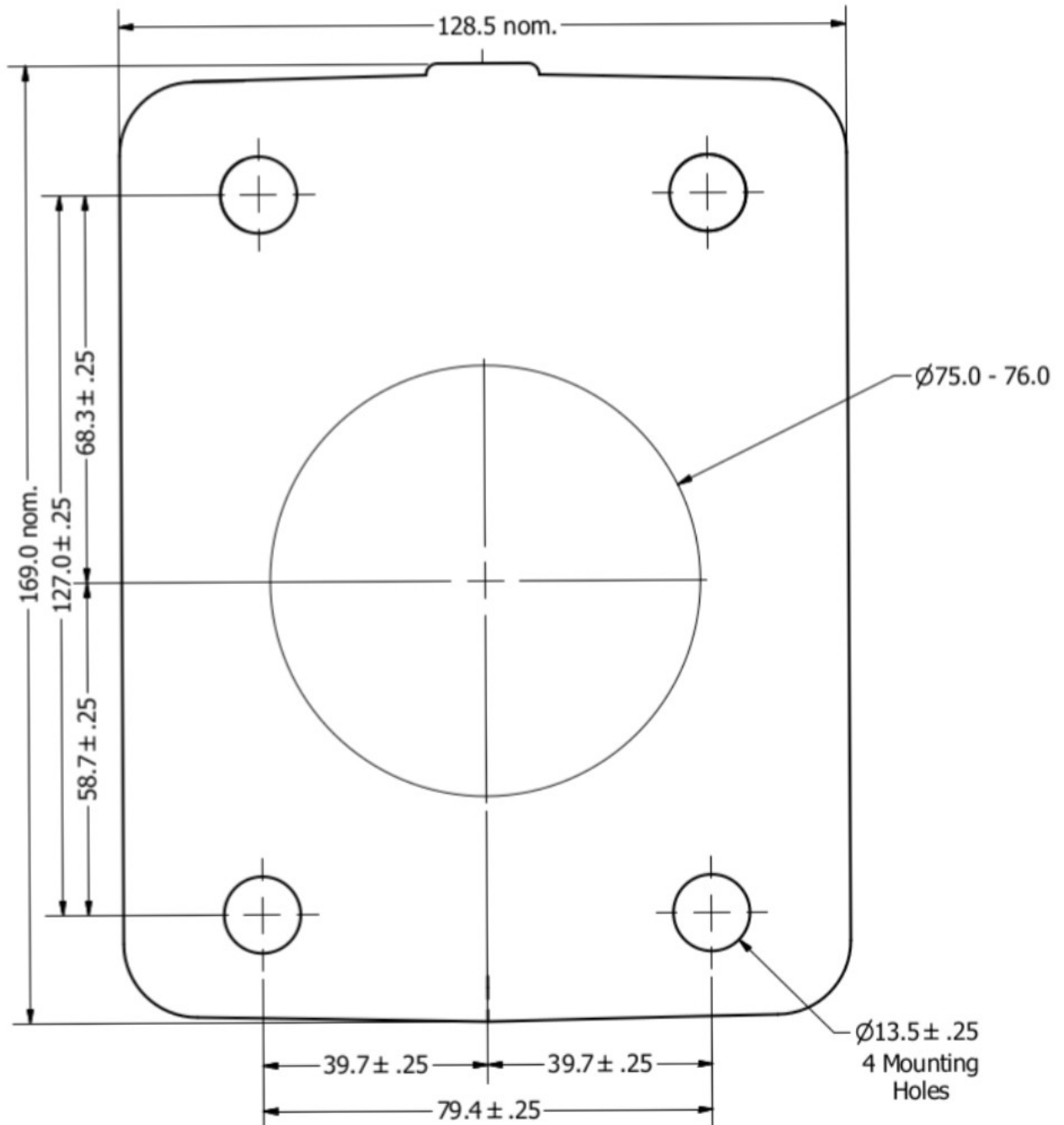
Ensure Receptacle Bung Is Locked In Place With Pawl



Receptacle Key Engagement

## AS Receptacle Mounting Profile Drawing

660/1100V 60A/90A AS Receptacle



## Maintenance and Safety

---

---

### Plug and Receptacle System

- To ensure the safe operation of the plug and receptacles, personnel should be aware of minimal ongoing care and maintenance.
- When cables are not in use, ensure that protective covers have been fitted to provide adequate sealing against moisture and dust.
- The plugs and receptacles should never be used as a towing or anchor point.
- Inspect plug and receptacle to ensure no parts are missing, if parts are missing it is deemed unsafe for use.
- Inspect insertion end of plug and entry of receptacle to ensure there is no damage, as damage could compromise the flame path protection
- Before connection inspect sealing ring in receptacle to ensure they are located correctly into groove.
- Before connection of plug and receptacle ensure connecting pins are not bent from previous misuse or incorrect assembly.
- Ensure plug has been inserted fully into receptacle before energising.
- If witness marks are used, make sure they are brightly painted on the sheath, located where the cable enters the gland. This needs to be routinely inspected to check if a gap appears between the end of the gland and the witness mark. A gap may indicate that the cable has been under tension and that the termination in the coupler may have moved.
- The maximum surface temperature the plug will achieve when operating at full rated current at an ambient of 40°C will not exceed 85°C.



**6 Shona Avenue  
Gladstone  
Queensland 4680**

**Phone: +61 7 49784000**

**Email: [ausproof@ausproof.com.au](mailto:ausproof@ausproof.com.au)  
Website: <https://www.ausproof.com.au>**