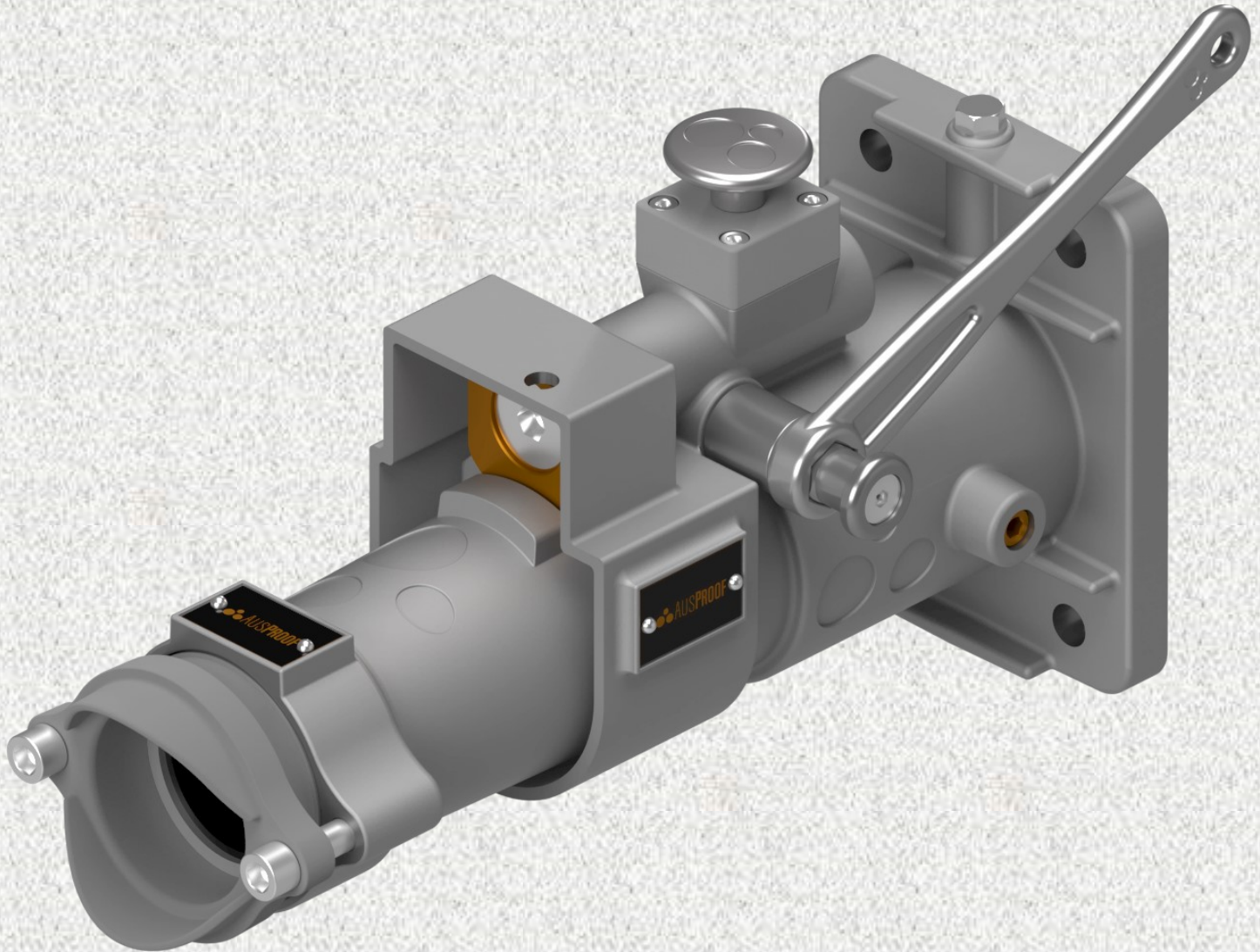


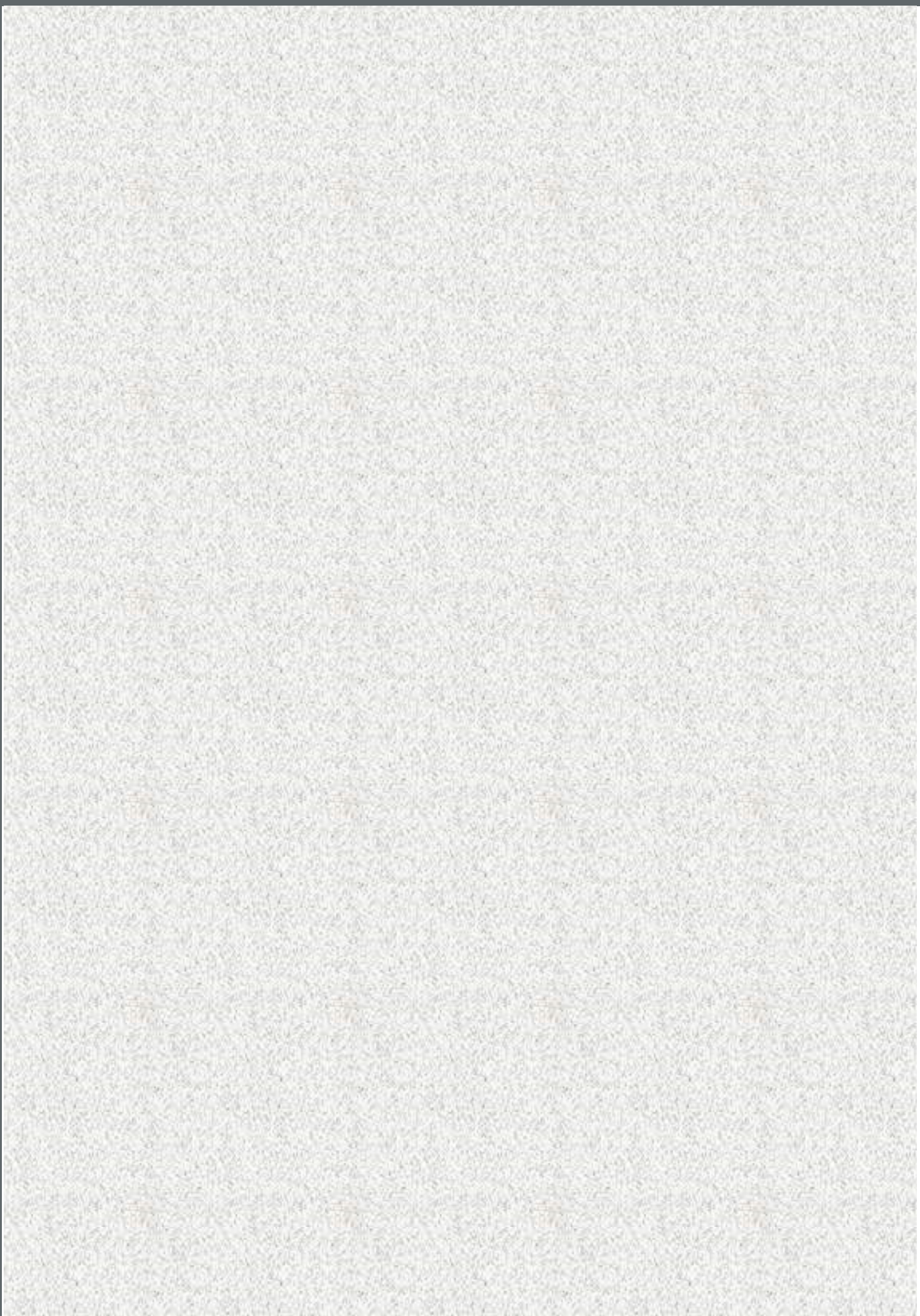


# Restrained Plugs And Receptacles

PS Range

Ex 150A








# Index


## Section 1

### Description


#### PS 660V Series

-  660V 150A PS Plug
- 660V 150A PS Receptacle
- 660V 150A PS Receptacle Gland Bracket
- 660V 150A PS Back to Back


#### PS 1100V Series


-  1100V 150A PS Plug
- 1100V 150A PS Receptacle
- 1100V 150A PS Receptacle Gland Bracket
- 1100V 150A PS Back to Back

#### PS Range Termination Procedures

-  660/1100V 150A PS Plug
- 660/1100V 150A PS Receptacle
- 660/1100V 150A PS Receptacle Gland Bracket

#### Accessories


-  PS Range Lockout Device Location
- PS Range Plug and Receptacle Accessories

-  PS Range Product Handling
- PS Range Glossary

-  Notes

## Section 2




#### Flamepath Detail

-  660/1100V 150A PS Back to Back ..... I
- 660/1100V 150A PS Plug and Receptacle ..... II

#### Mounting Details/Maintenance

-  PS Receptacle Mounting Profile Drawing ..... III
- Maintenance and Safety ..... IV

#### Ex Identification Labels

-  Plug Identification Labels ..... V
- Receptacle Identification Labels ..... VI
- Gland Bracket/Gland Mount Identification Labels ..... VII
- Back to Back Identification Labels ..... VIII
-  Conditions of Use ..... IX
-  Notes ..... X

## 660V 150A PS Plug

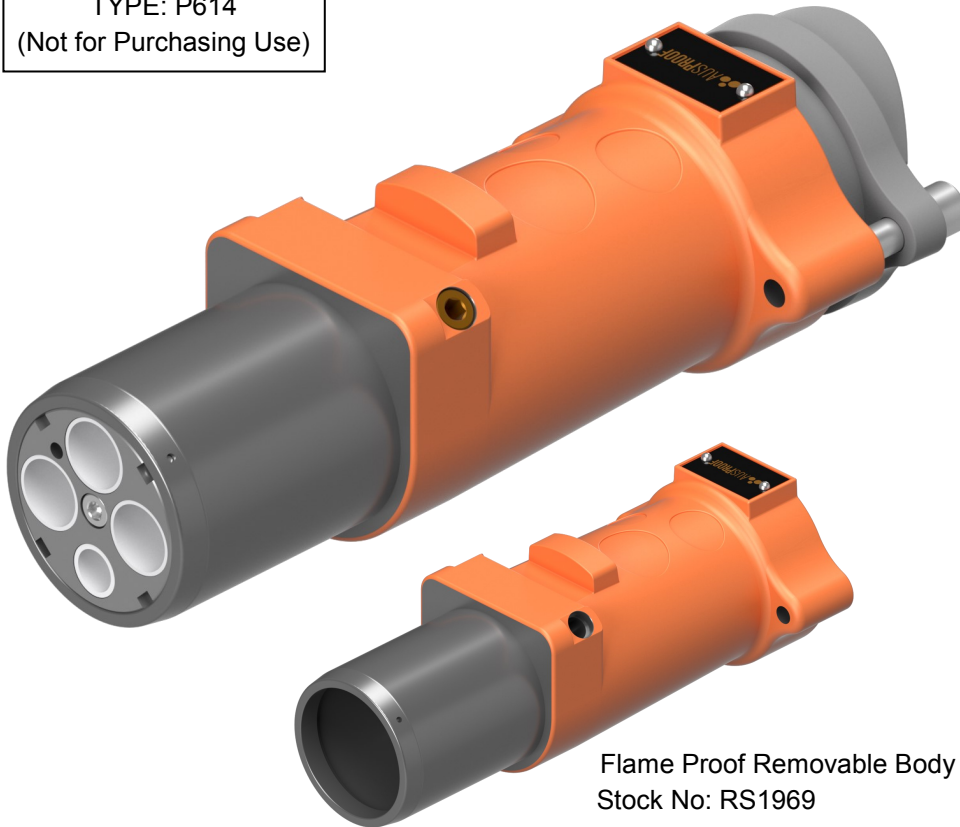
3 Phase 1 Pilot



Pilot Orientation

### Pre-Built To Suit Cable Type

TYPE: P614  
(Not for Purchasing Use)



Flame Proof Removable Body  
Stock No: RS1969

Plug Type To Suit Cable Type				
(mm <sup>2</sup> )	*Ref.	241.1	*Ref.	275.1
16	-	-	(E)	RS2221
25	(F)	RS1392	(E)	RS2222
35	(G)	RS1393	(F)	RS2223
50	(H)	RS1394	(G)	RS2224
70	(I)	RS1395	-	-
95	(J)	RS1396	-	-

\*Gland Reference Letter

### Part Breakdown For Customized Cables; One Of Each Type Required



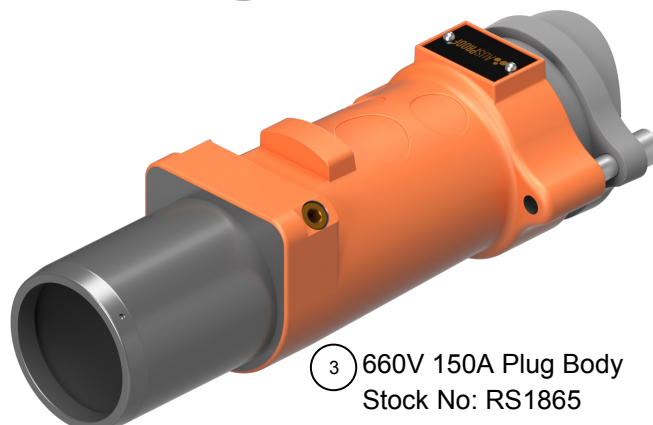
12 / 20 Style Contact Sets		
(mm <sup>2</sup> )	ID (mm)	Stock No.
10	4.7	RS2361
16	6.5	RS2229
25	7.5	RS1597
35	9.0	RS1598
50	10.5	RS1599
70	12.5	RS1600
95	14.0	RS1601

2 Front Cage  
Stock No: RS1804



Compression Gland Type		
*Ref.	Gland ID	Stock No.
(A)	10-15	RS2216
(B)	15-20	RS2217
(C)	20-25	RS2218
(D)	25-30	RS2219
(E)	30-35	RS2220
(F)	35-40	RS1592
(G)	40-45	RS1593
(H)	45-50	RS1594
(I)	50-55	RS1595
(J)	55-60	RS1596

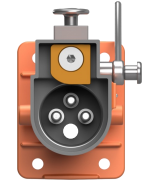
\*Gland Reference Letter



3 660V 150A Plug Body  
Stock No: RS1865

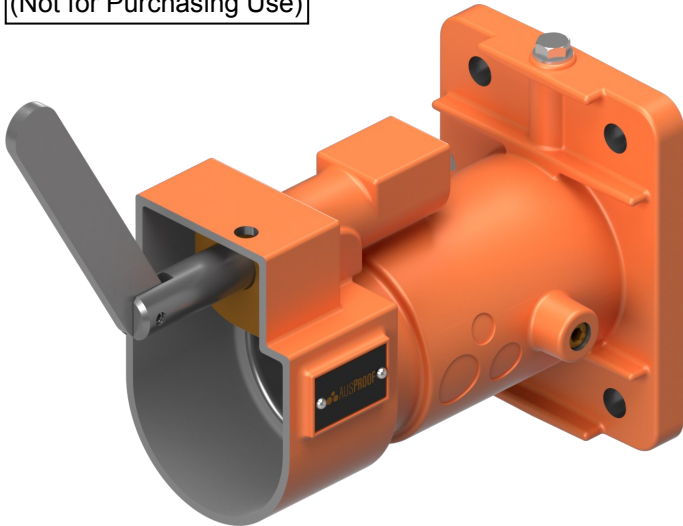
# 660V 150A PS Receptacle

3 Phase 1 Pilot

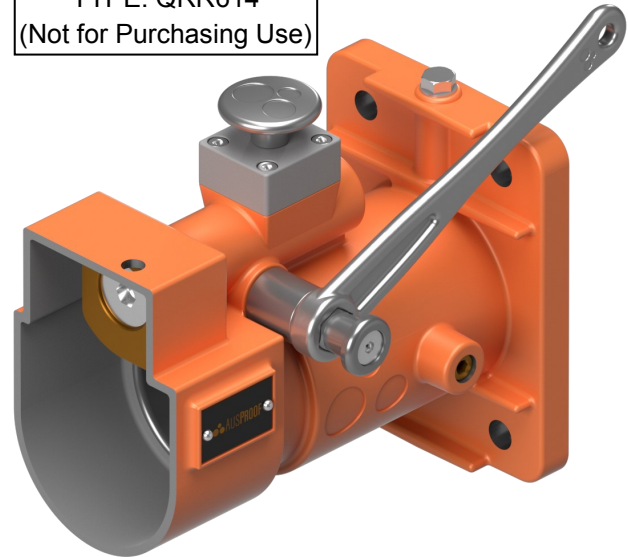


Pilot Orientation

TYPE: R614  
(Not for Purchasing Use)



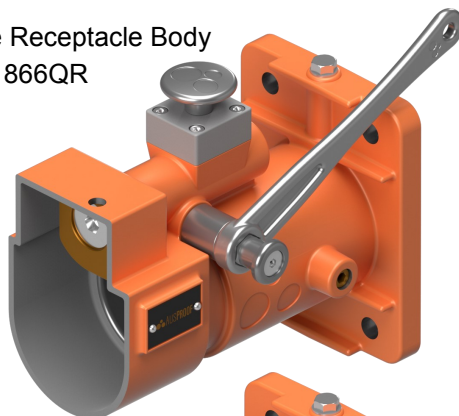
TYPE: QRR614  
(Not for Purchasing Use)



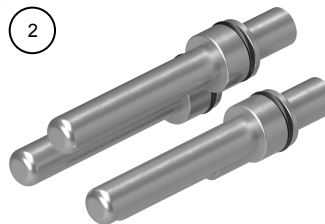
Receptacle Type to Suit mm <sup>2</sup> Cable Tails		
(mm <sup>2</sup> )	(Jack In)	(Quick Release)
25	RS1397	RS1397QR
35	RS1398	RS1398QR
50	RS1399	RS1399QR
70	RS1400	RS1400QR
95	RS1401	RS1401QR

**Part Breakdown For Customized Cables; One Of Each Type Required**

1 660V 150A  
Quick Release Receptacle Body  
Stock No: RS1866QR



2

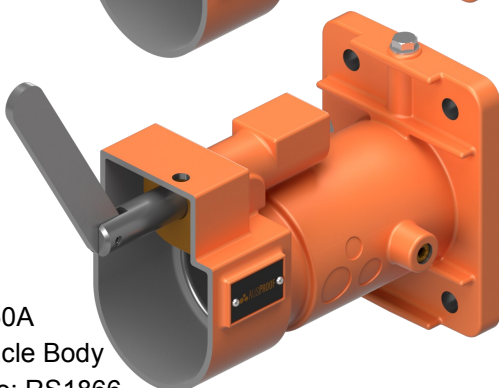


3 Receptacle Cage + Insulator Set  
Stock No: RS1806



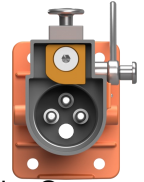
12 / 68 Style Contact Sets		
(mm <sup>2</sup> )	ID (mm)	Stock No.
10	4.7	RS2362
16	6.5	RS2363
25	7.5	RS1612
35	9.0	RS1613
50	10.5	RS1614
70	12.5	RS1615
95	14.0	RS1616

1 660V 150A  
Receptacle Body  
Stock No: RS1866



# 660V 150A Receptacle Gland Bracket (RGB)

3 Phase 1 Pilot

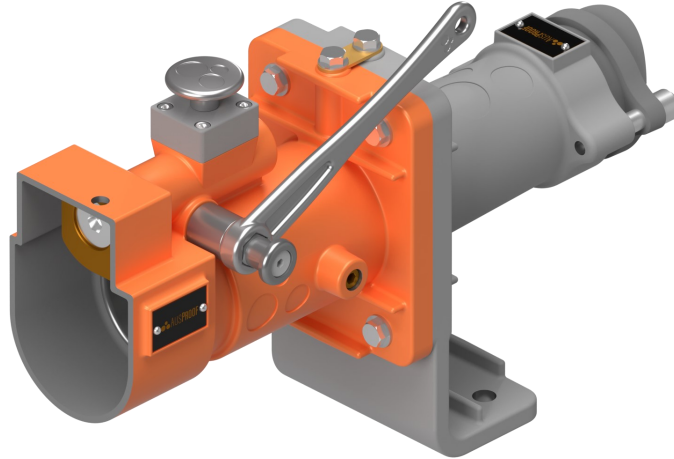


Pilot Orientation

## Built To Suit Cable Type

TYPE: QRGB614  
(Not for Purchasing Use)

TYPE: GB614  
(Not for Purchasing Use)

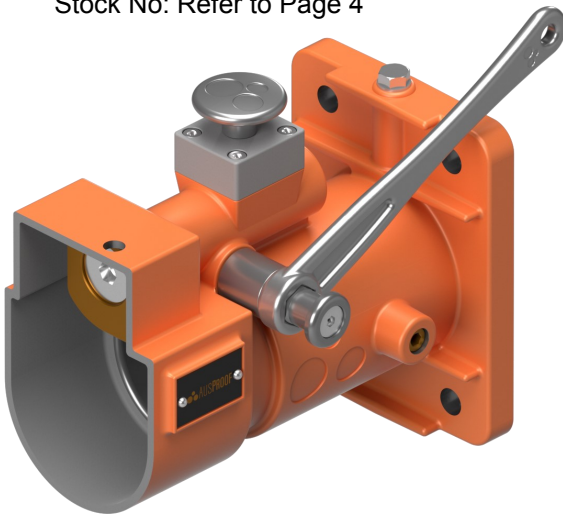


Complete Product To Suit Cable Type						
(mm <sup>2</sup> )	*Ref.	241.1		*Ref.	275.1	
		(Jack-In)	(Quick Release)		(Jack-In)	(Quick Release)
16	-	-	-	(E)	RS2493	RS2493QR
25	(F)	RS2488	RS2488QR	(E)	RS2494	RS2494QR
35	(G)	RS2489	RS2489QR	(F)	RS2495	RS2495QR
50	(H)	RS2490	RS2490QR	(G)	RS2496	RS2496QR
70	(I)	RS2491	RS2491QR	-	-	-
95	(J)	RS2492	RS2492QR	-	-	-

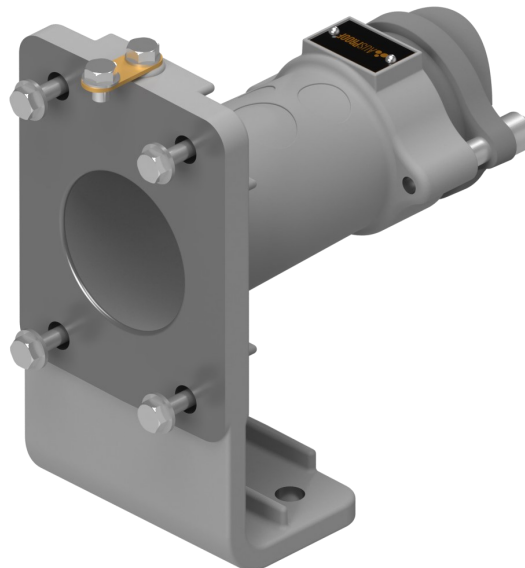
\*Gland Reference Letter

## Part Breakdown For Customized Cables; One Of Each Type Required

① 660V 150A Receptacle  
Stock No: Refer to Page 4



② PS Gland Bracket Body Kit  
Stock No: RS2508



③



Compression Gland Type		
*Ref.	Gland ID	Stock No.
(A)	10-15	RS2216
(B)	15-20	RS2217
(C)	20-25	RS2218
(D)	25-30	RS2219
(E)	30-35	RS2220
(F)	35-40	RS1592
(G)	40-45	RS1593
(H)	45-50	RS1594
(I)	50-55	RS1595
(J)	55-60	RS1596

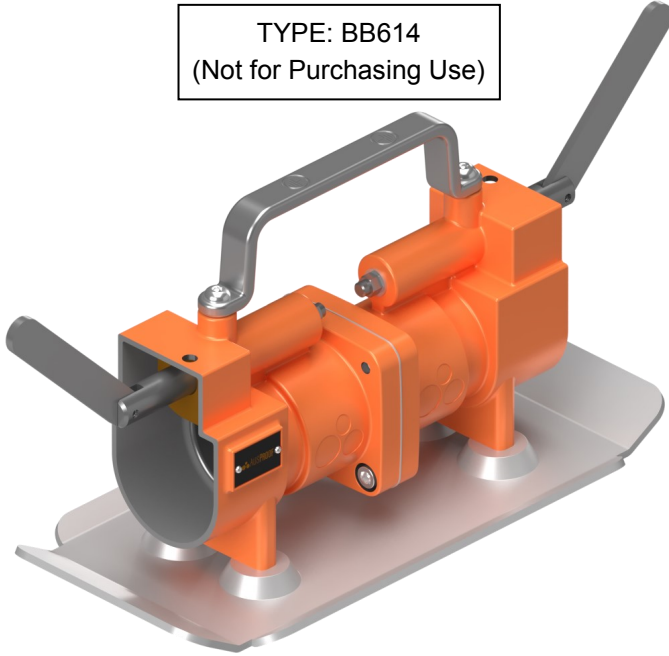
\*Gland Reference Letter



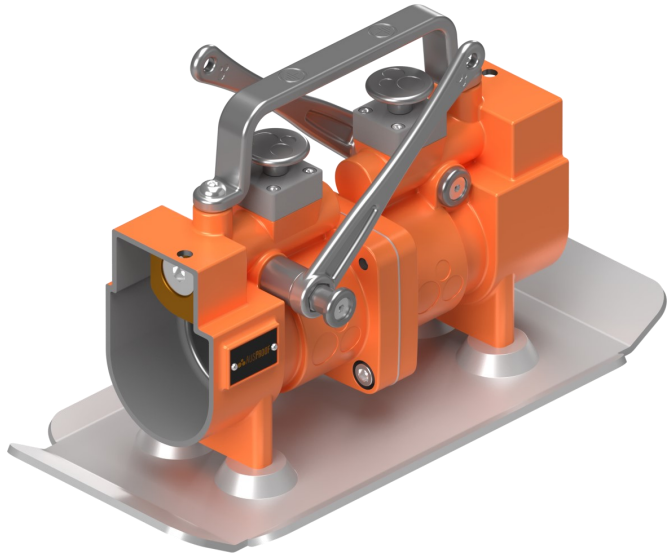
# 660V 150A Back to Back (B2B)

## 3 Phase 1 Pilot

TYPE: BB614  
(Not for Purchasing Use)



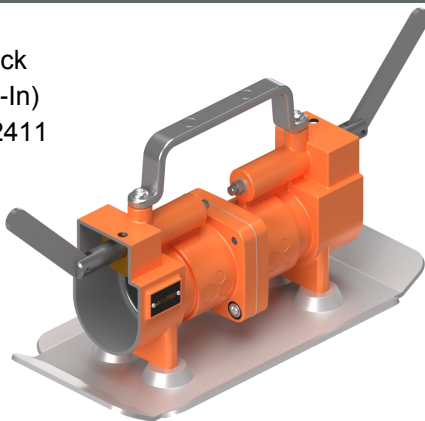
TYPE: QRBB614  
(Not for Purchasing Use)



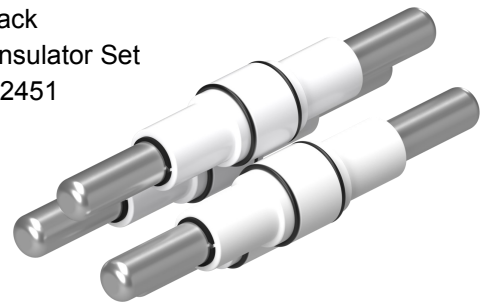
Complete Back to Back	
Jack-In	Quick Release
Stock No: RS2460	Stock No: RS2460QR

### Part Breakdown For Repairs; One Of Each Type Required

① PS Back to Back  
Body Kit (Jack-In)  
Stock No: RS2411



② PS Back to Back  
Contact and Insulator Set  
Stock No: RS2451



① PS Back to Back  
Body Kit (Quick-Release)  
Stock No: RS2411QR



③ PS Back to Back  
Cage Kit  
Stock No: RS2436



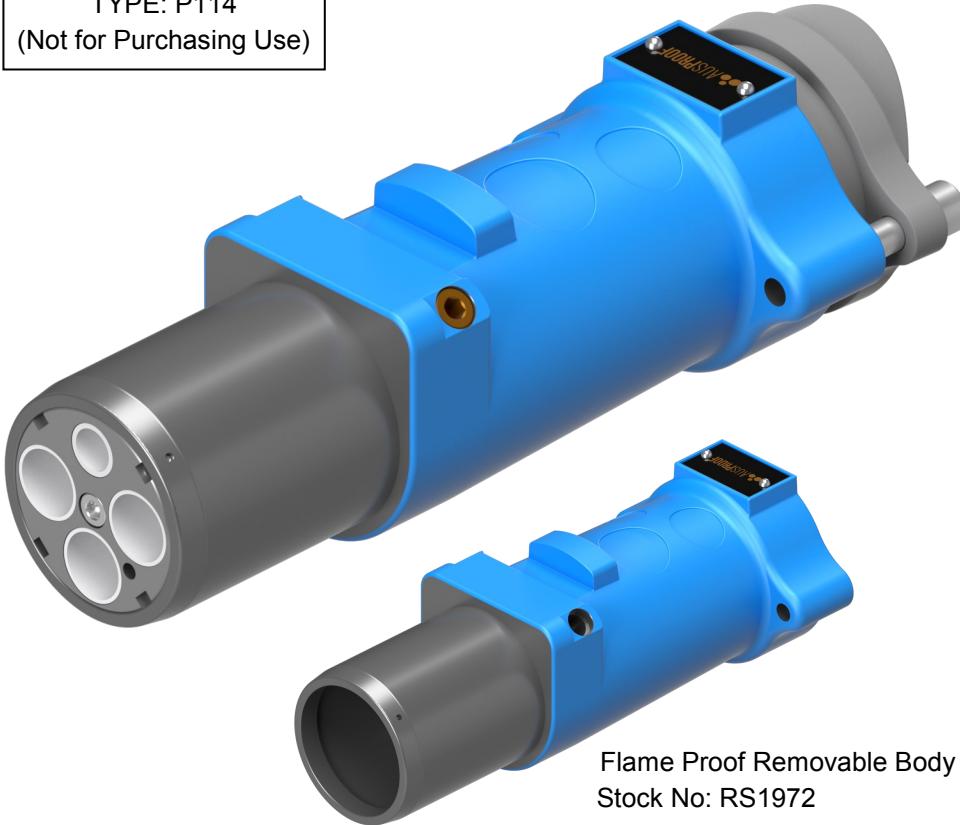
## 1100V 150A Plug 3 Phase 1 Pilot



Pilot Orientation

### Pre-Built To Suit Cable Type

TYPE: P114  
(Not for Purchasing Use)



Flame Proof Removable Body  
Stock No: RS1972

Plug Type To Suit Cable Type				
(mm <sup>2</sup> )	*Ref.	241.1	*Ref.	275.1
16	(E)	RS2225	(E)	RS2225
25	(F)	RS1402	(E)	RS2226
35	(G)	RS1403	(F)	RS2227
50	(H)	RS1404	(G)	RS2228
70	(I)	RS1405	-	-
95	(J)	RS1406	-	-

\*Gland Reference Letter

### Part Breakdown For Customized Cables; One Of Each Type Required



12 / 20 Style Contact Sets		
(mm <sup>2</sup> )	ID (mm)	Stock No.
10	4.7	RS2361
16	6.5	RS2229
25	7.5	RS1597
35	9.0	RS1598
50	10.5	RS1599
70	12.5	RS1600
95	14.0	RS1601

2 Front Cage  
Stock No: RS1804



Compression Gland Type		
*Ref.	Gland ID	Stock No.
(A)	10-15	RS2216
(B)	15-20	RS2217
(C)	20-25	RS2218
(D)	25-30	RS2219
(E)	30-35	RS2220
(F)	35-40	RS1592
(G)	40-45	RS1593
(H)	45-50	RS1594
(I)	50-55	RS1595
(J)	55-60	RS1596

\*Gland Reference Letter

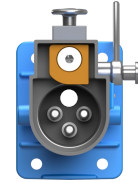


3 1100V 150A Plug Body  
Stock No: RS1803



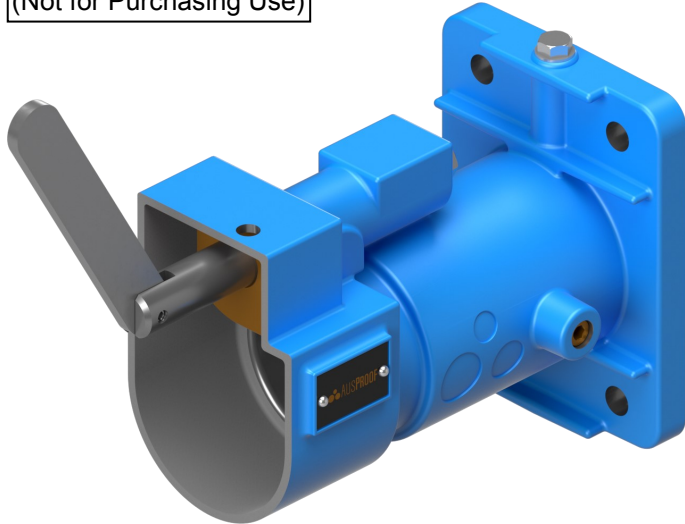
# 1100V 150A Receptacle

## 3 Phase 1 Pilot

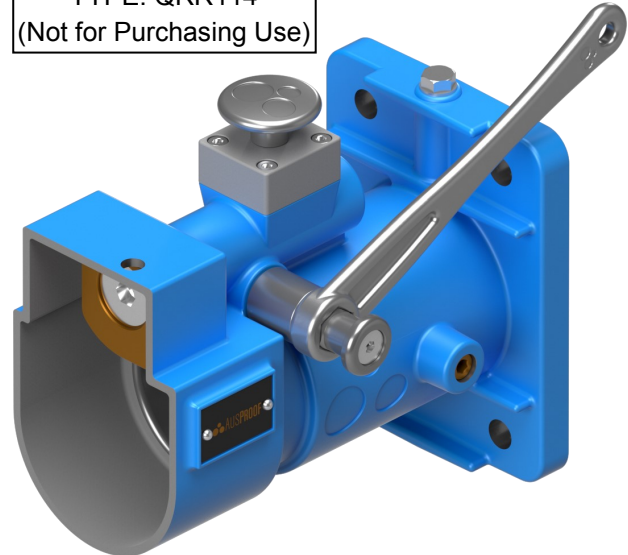


Pilot Orientation

TYPE: R114  
(Not for Purchasing Use)



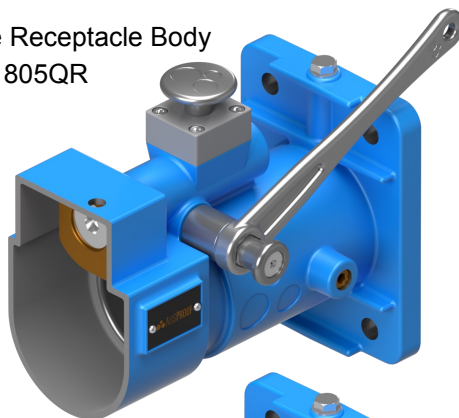
TYPE: QRR114  
(Not for Purchasing Use)



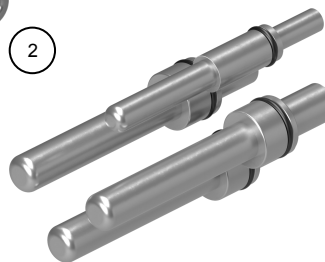
Receptacle Type to Suit mm <sup>2</sup> Cable Tails		
(mm <sup>2</sup> )	(Jack In)	(Quick Release)
25	RS1407	RS1407QR
35	RS1408	RS1408QR
50	RS1409	RS1409QR
70	RS1410	RS1410QR
95	RS1411	RS1411QR

**Part Breakdown For Customized Cables; One Of Each Type Required**

1 1100V 150A  
Quick Release Receptacle Body  
Stock No: RS1805QR



2

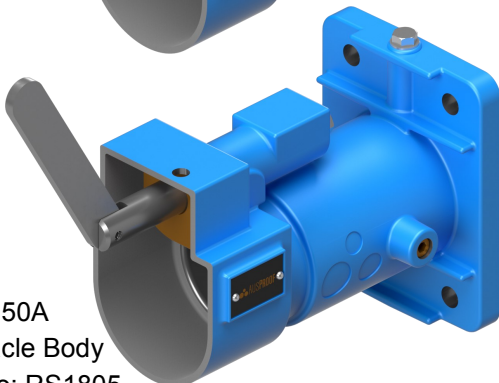


3 Receptacle Cage  
Stock No: RS1806



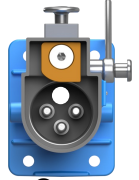
12 / 68 Style Contact Sets		
(mm <sup>2</sup> )	ID (mm)	Stock No.
10	4.7	RS2362
16	6.5	RS2363
25	7.5	RS1612
35	9.0	RS1613
50	10.5	RS1614
70	12.5	RS1615
95	14.0	RS1616

1 1100V 150A  
Receptacle Body  
Stock No: RS1805



## 1100V 150A Receptacle Gland Bracket (RGB)

3 Phase 1 Pilot

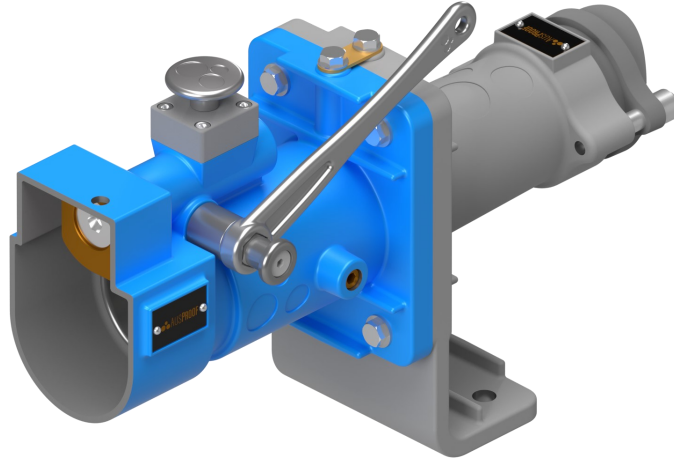


Pilot Orientation

### Built To Suit Cable Type

TYPE: QRGB114  
(Not for Purchasing Use)

TYPE: GB114  
(Not for Purchasing Use)

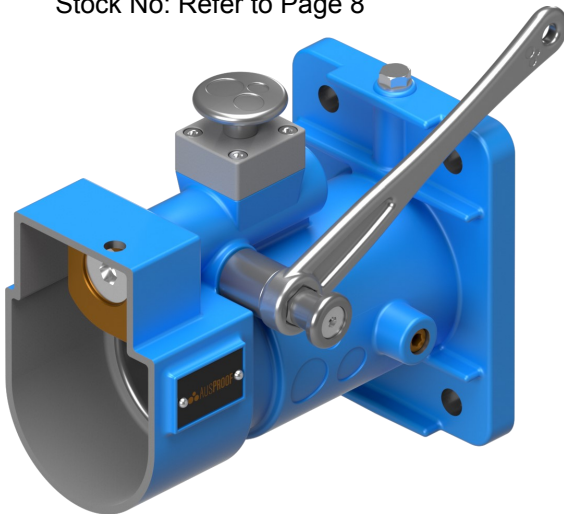


Complete Product To Suit Cable Type						
(mm <sup>2</sup> )	*Ref.	241.1		*Ref.	275.1	
		(Jack-In)	(Quick Release)		(Jack-In)	(Quick Release)
16	-	-	-	(E)	RS2502	RS2502QR
25	(F)	RS2497	RS2497QR	(E)	RS2503	RS2503QR
35	(G)	RS2498	RS2498QR	(F)	RS2504	RS2504QR
50	(H)	RS2499	RS2499QR	(G)	RS2505	RS2505QR
70	(I)	RS2500	RS2500QR	-	-	-
95	(J)	RS2501	RS2501QR	-	-	-

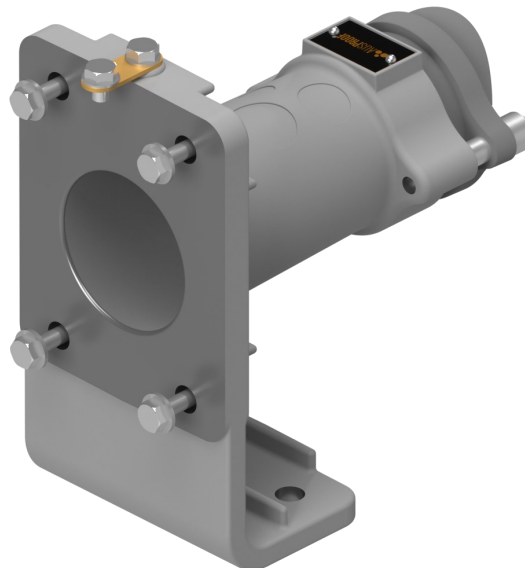
\*Gland Reference Letter

### Part Breakdown For Customized Cables; One Of Each Type Required

① 1100V 150A Receptacle  
Stock No: Refer to Page 8



② PS Gland Bracket Body Kit  
Stock No: RS2508



③



Compression Gland Type		
*Ref.	Gland ID	Stock No.
(A)	10-15	RS2216
(B)	15-20	RS2217
(C)	20-25	RS2218
(D)	25-30	RS2219
(E)	30-35	RS2220
(F)	35-40	RS1592
(G)	40-45	RS1593
(H)	45-50	RS1594
(I)	50-55	RS1595
(J)	55-60	RS1596

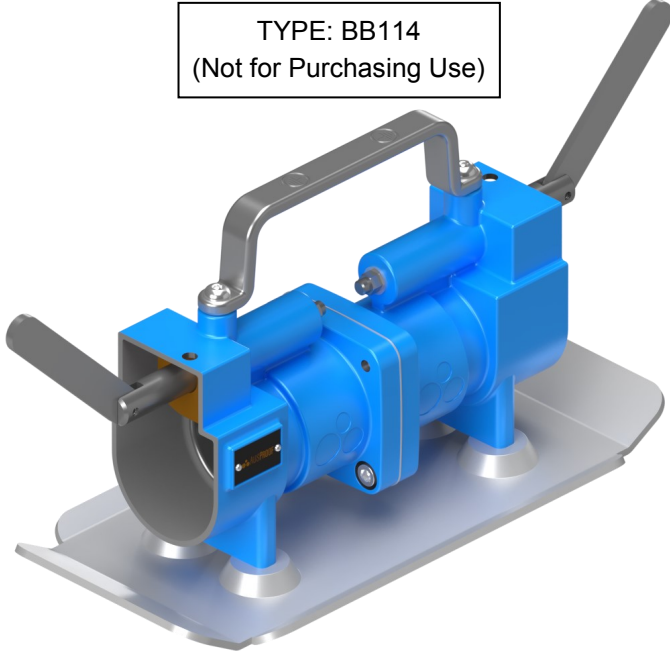
\*Gland Reference Letter



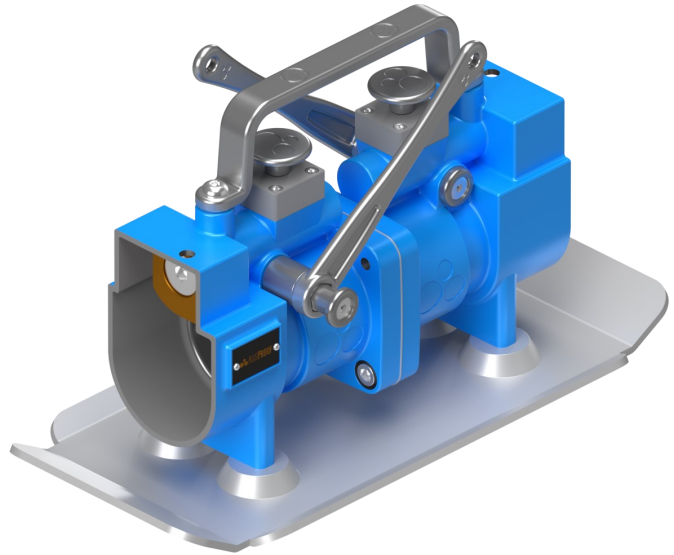
# 1100V 150A Back to Back (B2B)

3 Phase 1 Pilot

TYPE: BB114  
(Not for Purchasing Use)



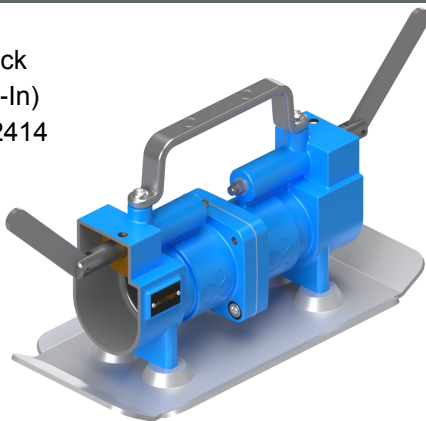
TYPE: QRBB114  
(Not for Purchasing Use)



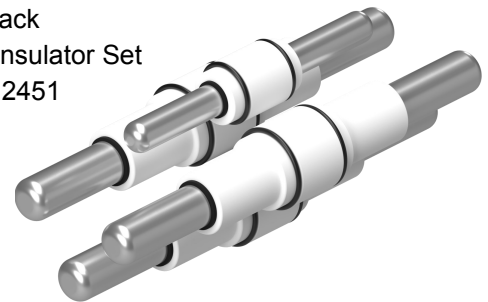
Complete Back to Back	
Jack-In	Quick Release
Stock No: RS2461	Stock No: RS2461QR

**Part Breakdown For Repairs; One Of Each Type Required**

- ① PS Back to Back Body Kit (Jack-In)  
Stock No: RS2414



- ② PS Back to Back Contact and Insulator Set  
Stock No: RS2451



- ① PS Back to Back Body Kit (Quick-Release)  
Stock No: RS2414QR

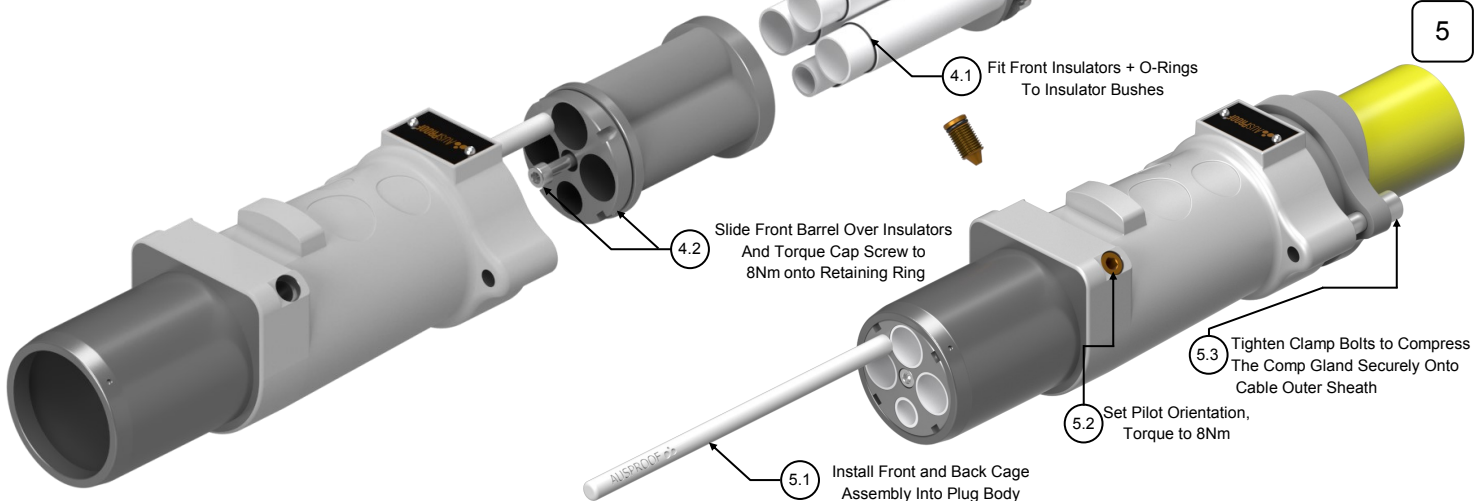
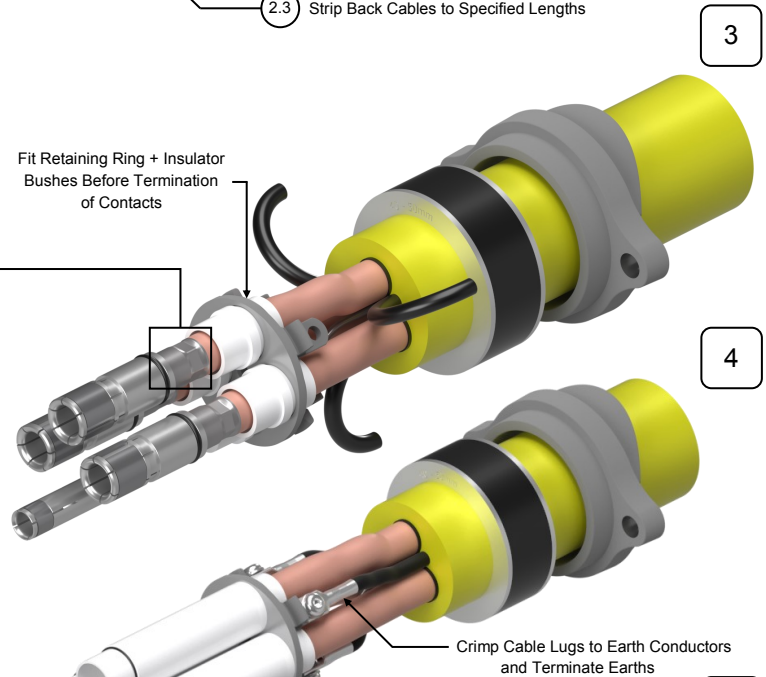
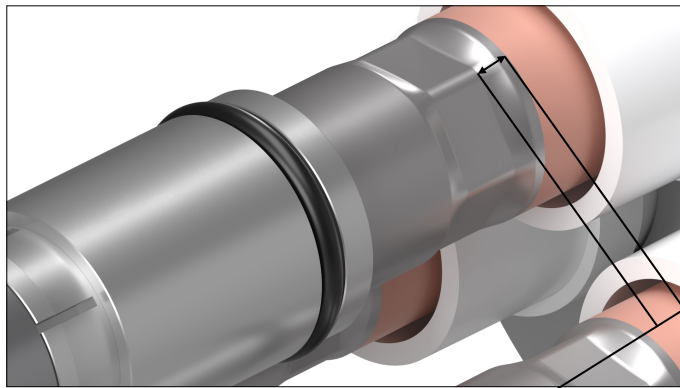
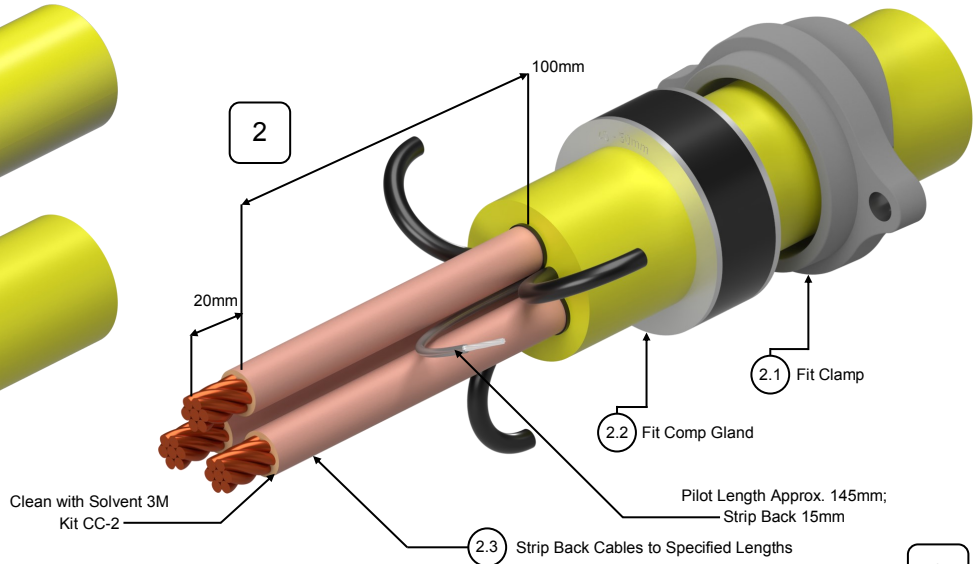
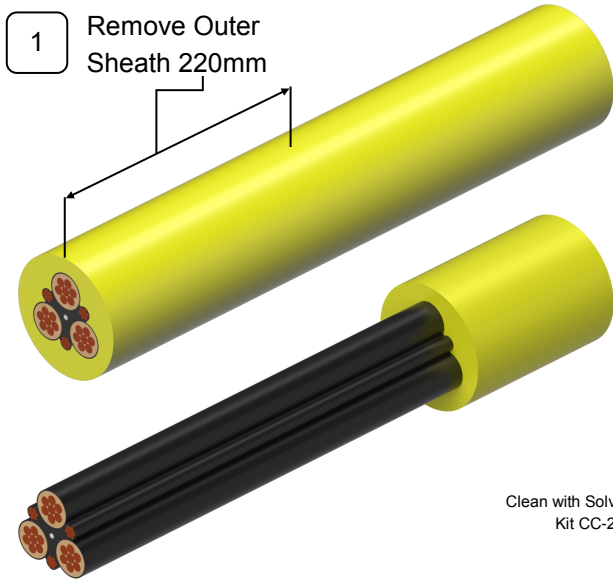
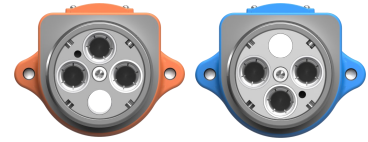


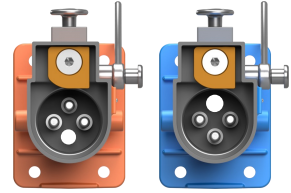
- ③ PS Back to Back Cage Kit  
Stock No: RS2436



## PS Range Termination Procedure

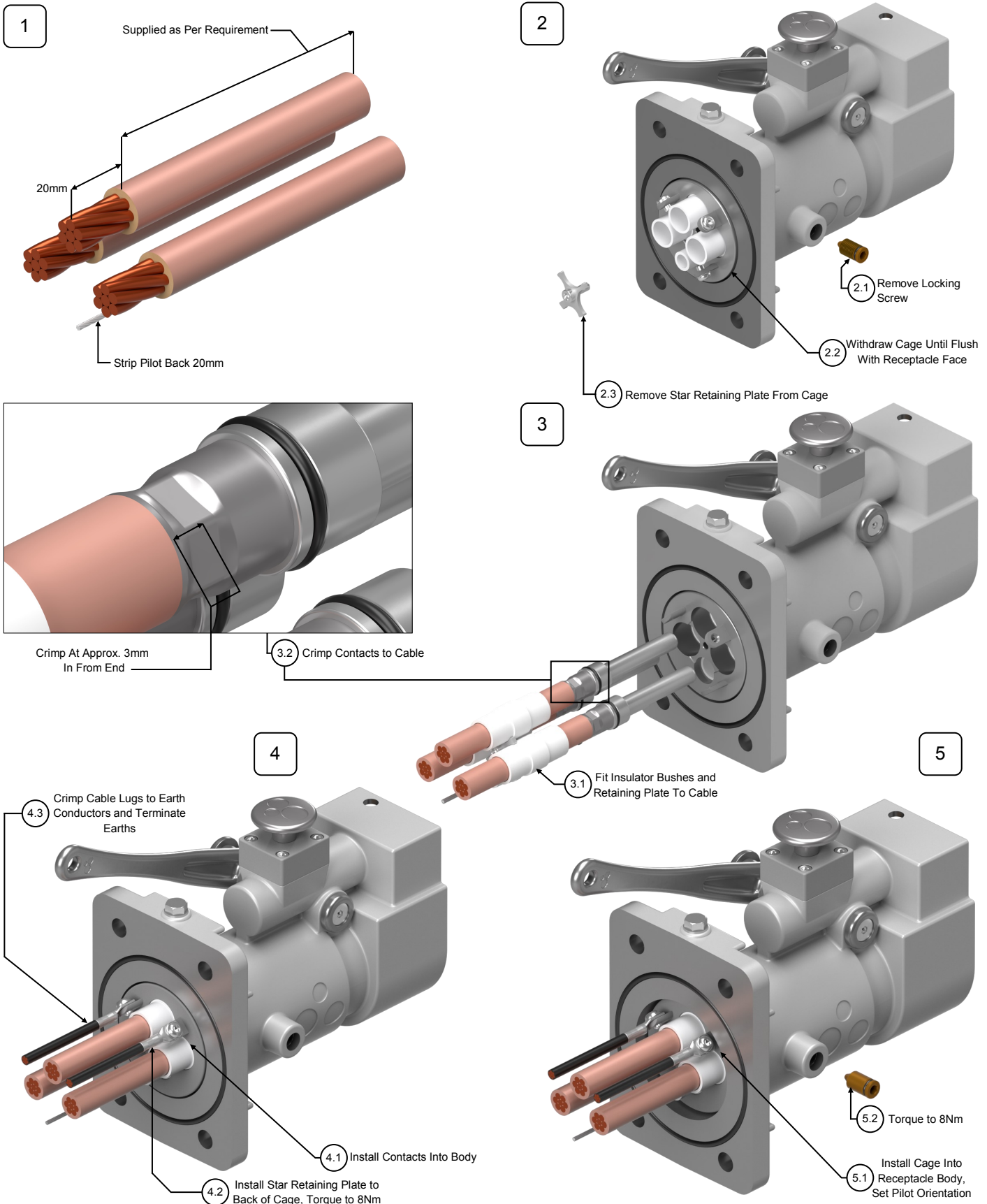
660/1100V 150A Plug; 3 Phase 1 Pilot





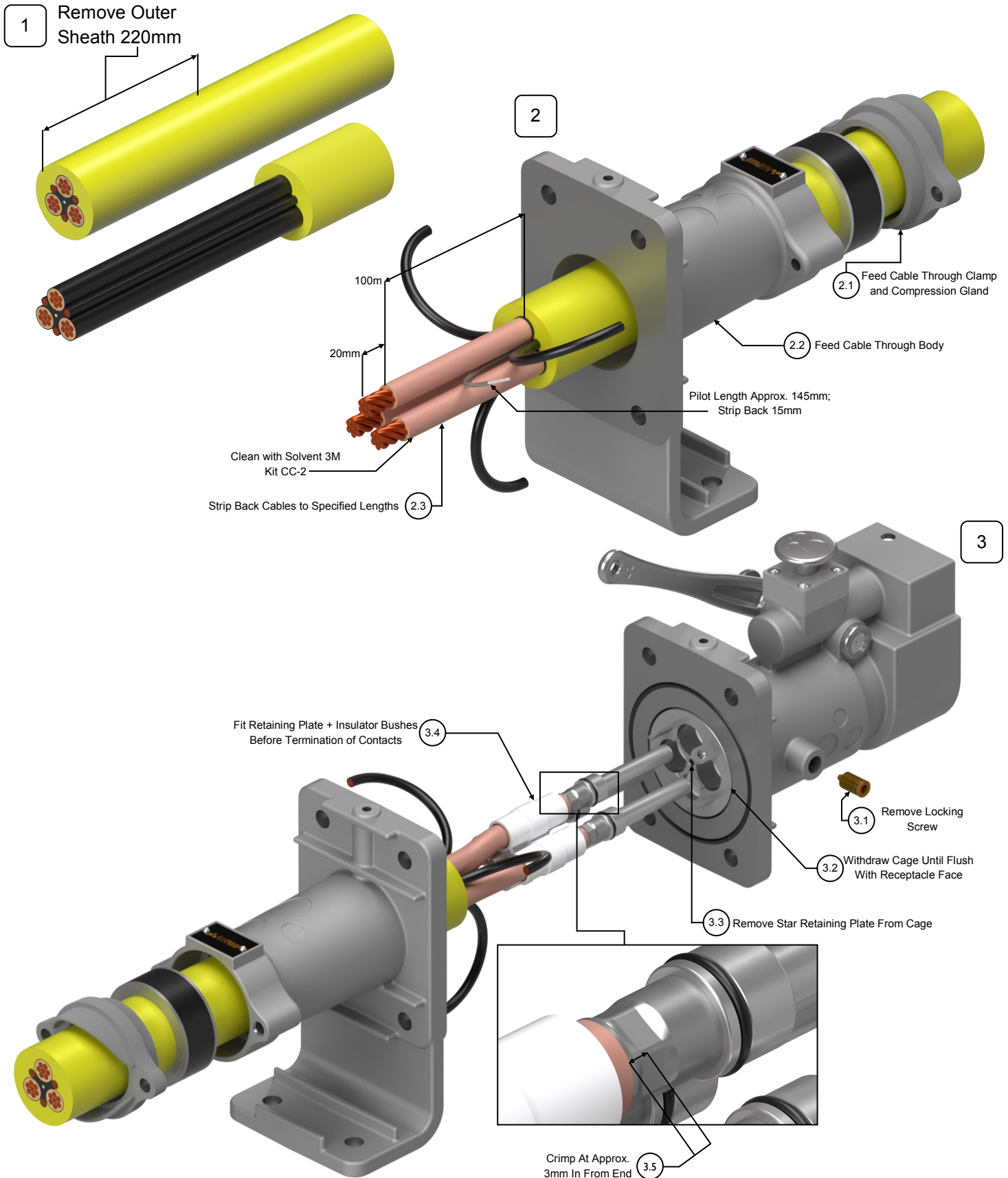
## PS Range Termination Procedure

660/1100V 150A Receptacle; 3 Phase 1 Pilot



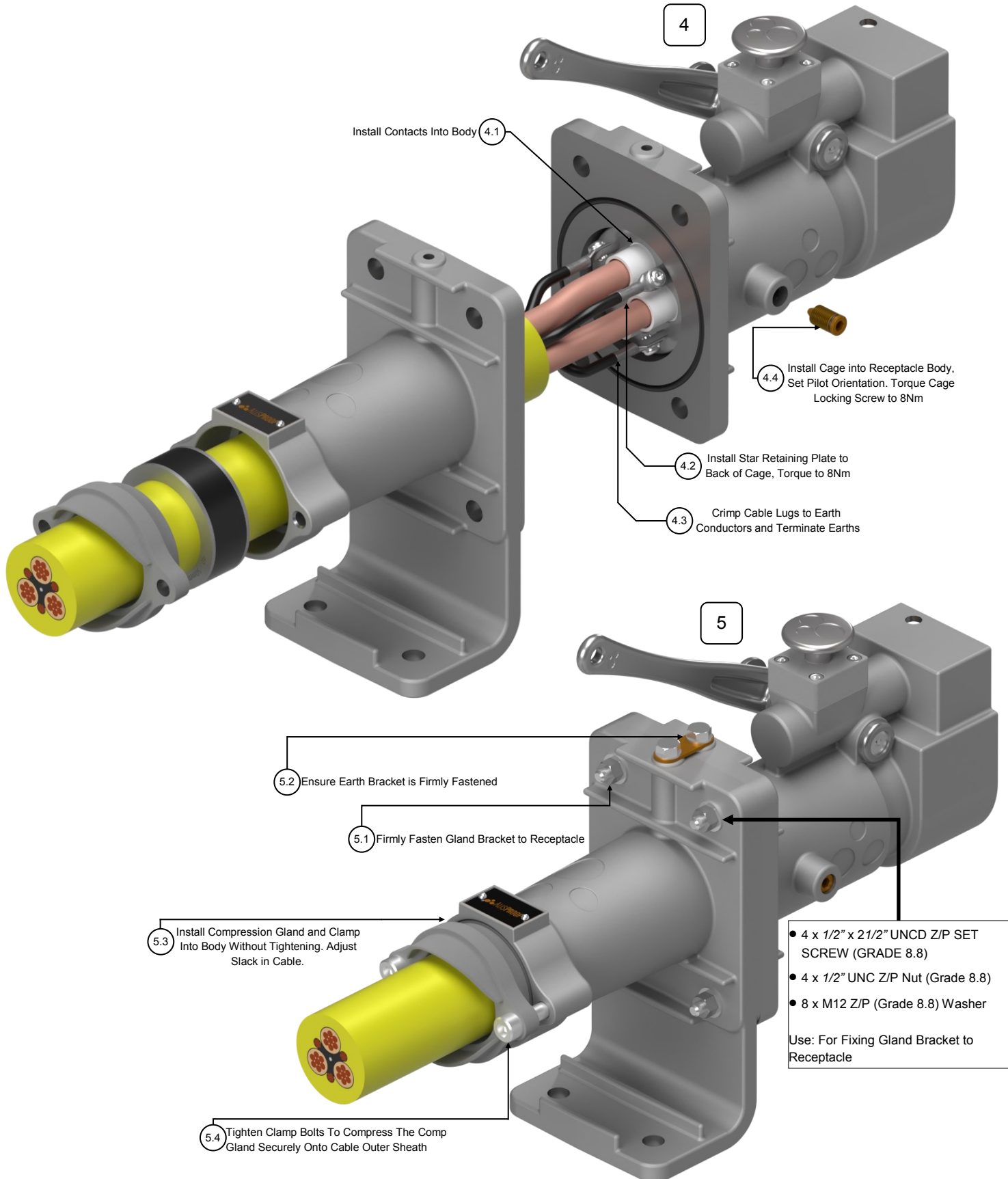
## PS Range Termination Procedure

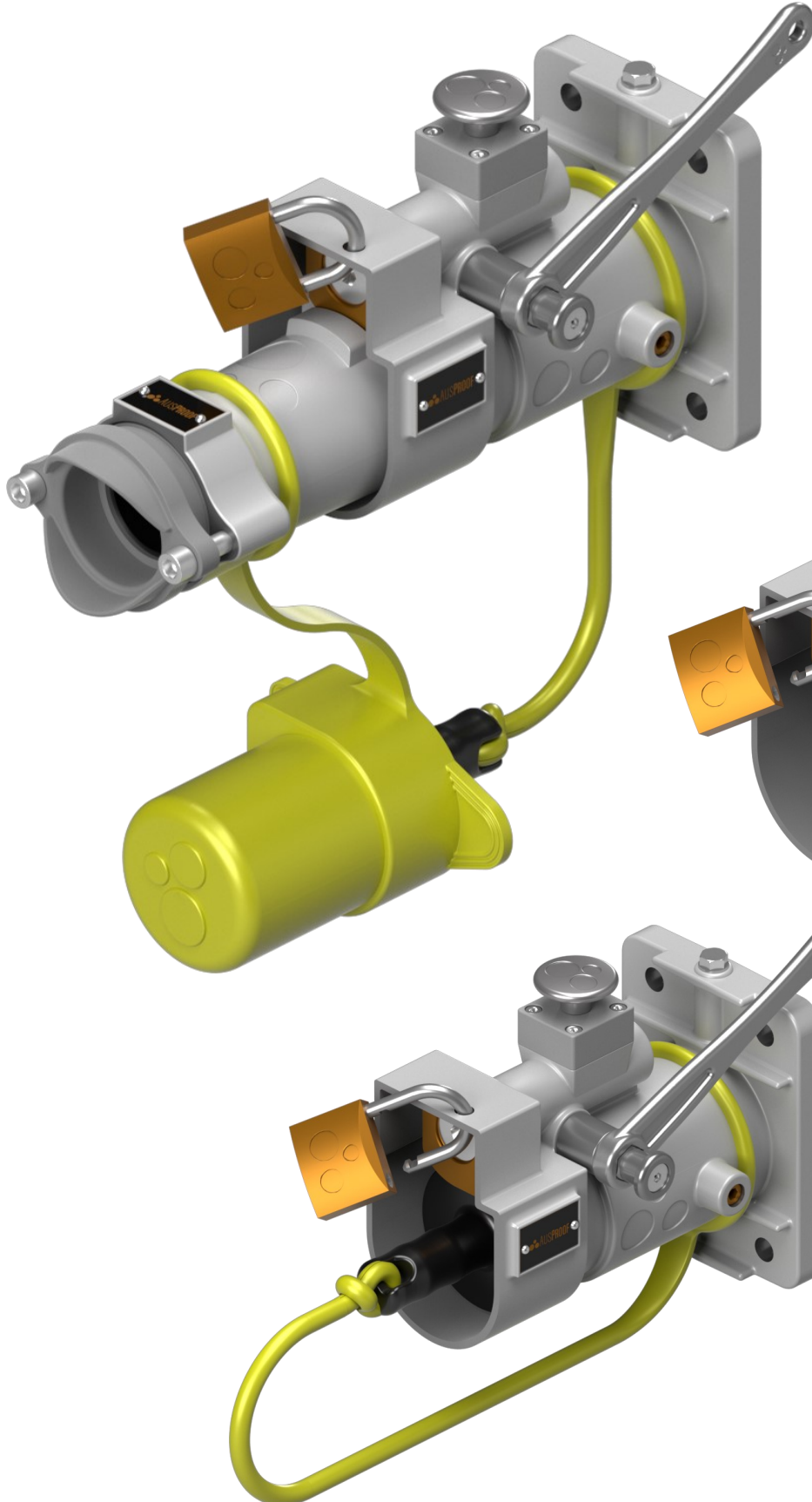
660/1100V 150A Receptacle Gland Bracket; 3 Phase 1 Pilot



# PS Range Termination Procedure

660/1100V 150A Receptacle Gland Bracket; 3 Phase 1 Pilot

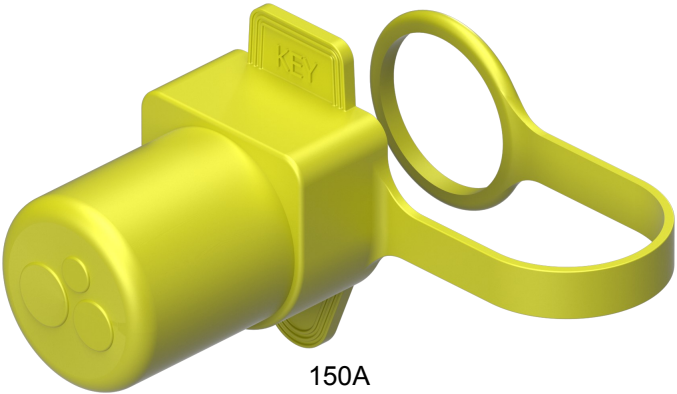




A Lockout Device May Be Fitted To Prevent the Plug Being Inserted



# PS Range Plug Accessories



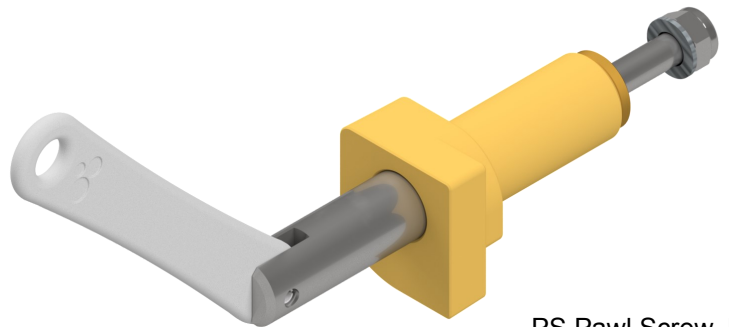
150A  
Plug Cover  
Part No: 3199



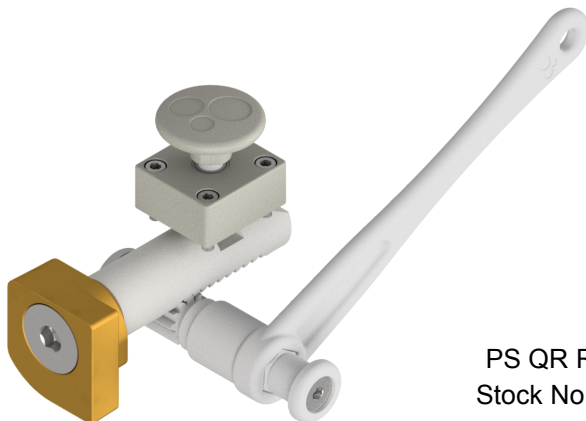
Guide Stick  
Part No: 1766



150A  
Receptacle Protective Bung  
Stock No: RS1768



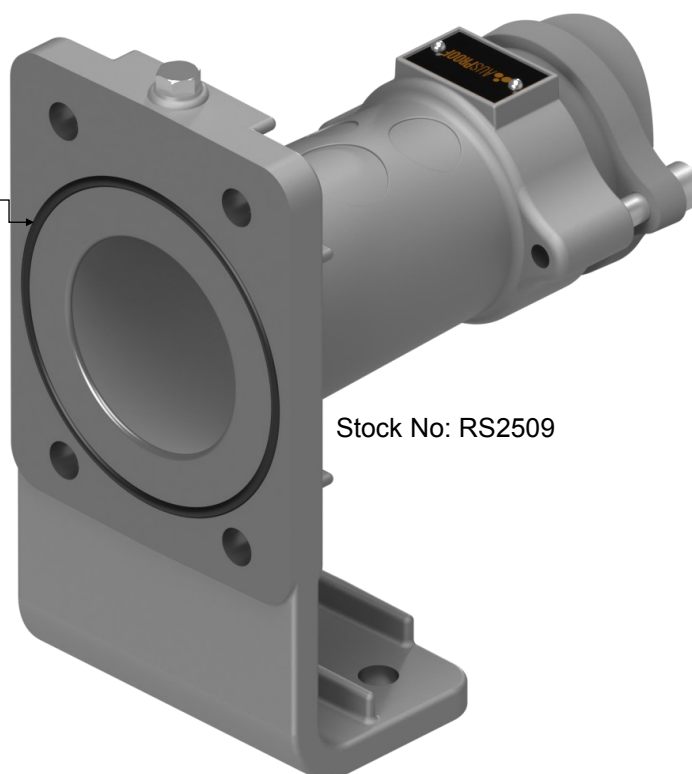
PS Pawl Screw Jack in F  
Assembly  
Stock No: RS1609



PS QR Repair Kit  
Stock No: RS1183

## PS Range Receptacle Accessories

Alternative Gland Mounting  
Added O-Ring  
Not To Be Mounted To Receptacles Due  
To O-Ring Fitting



Stock No: RS2509

TYPE: GMPS  
(Not for Purchasing Use)

## Accessories

### OIF (O-Ring, Insulators and Fasteners) Repair Kits for Plugs

OIF Repair Kits	
<b>660V 150A 4 Pin PS Plug, Contact and Insulator SET Style 12/20</b>	<b>Stock Number</b>
10-95mm	RS3341
<b>1100V 150A 4 Pin PS Plug, Contact and Insulator SET Style 12/20</b>	<b>Stock Number</b>
10-95mm	RS3341

OIF Cage Repair Kit for Plugs	Stock Number
4 Pin Front Cage (RS1804)	RS1602



## Accessories

### OIF (O-Ring, Insulators and Fasteners) Repair Kits for Receptacles

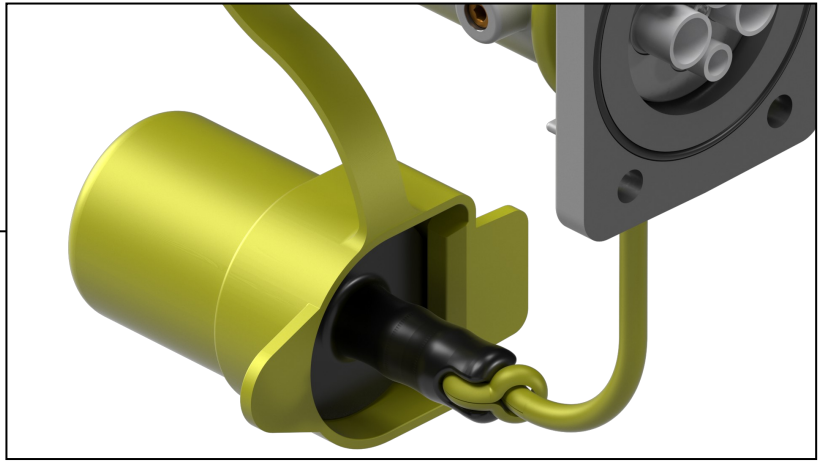
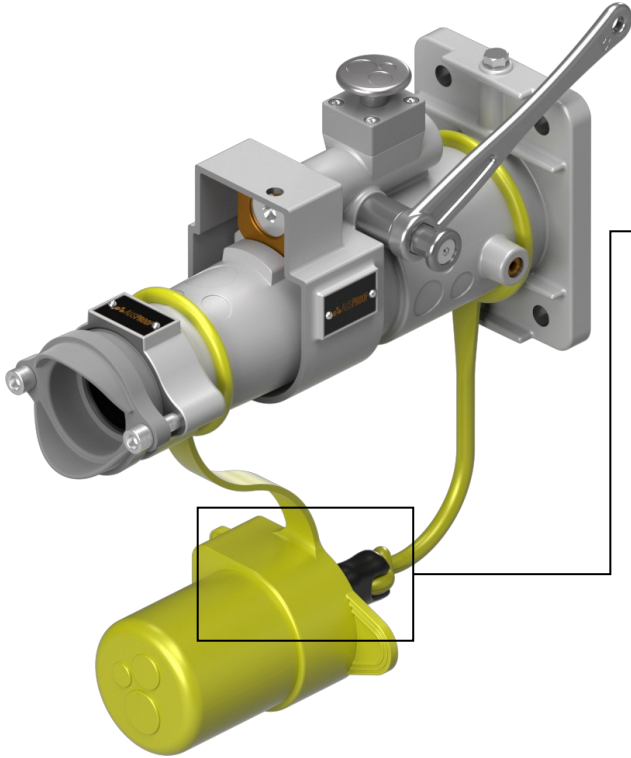
OIF Repair Kits	
<b>660V 150A 4 Pin PS Receptacle, Contact and Insulator SET Style 12/68</b>	<b>Stock Number</b>
10-95mm	RS3342
<b>1100V 150A 4 Pin PS Receptacle, Contact and Insulator SET Style 12/68</b>	<b>Stock Number</b>
10-95mm	RS3342

OIF Barrel Repair Kit for Receptacles	Stock Number
4 Pin Receptacle Cage (RS1806)	RS1617

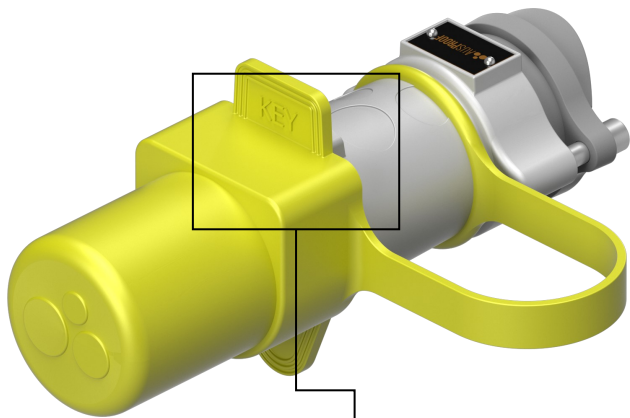


# PS Range Product Handling

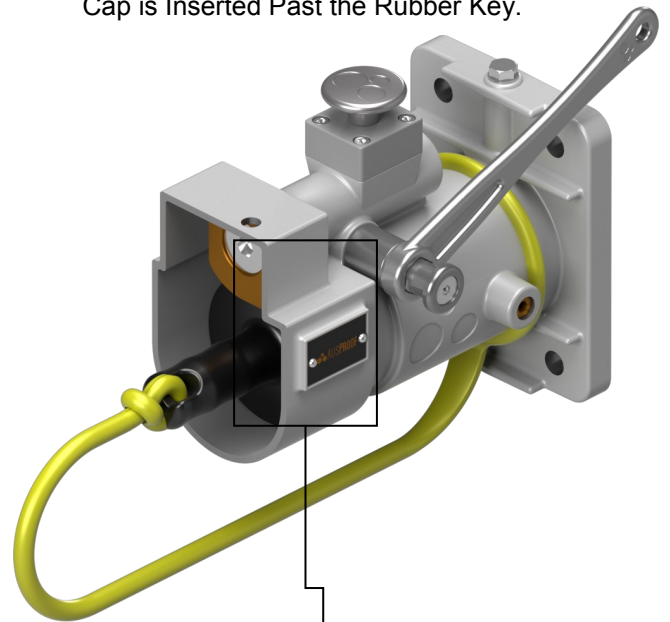
660/1100V 150A Plug And Receptacle



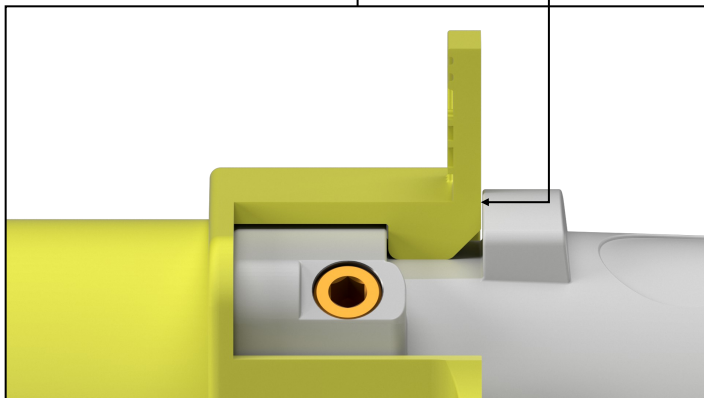
When Not In Use, Insert Receptacle Bung Into Silicone Plug Cover. Ensure Cap is Inserted Past the Rubber Key.



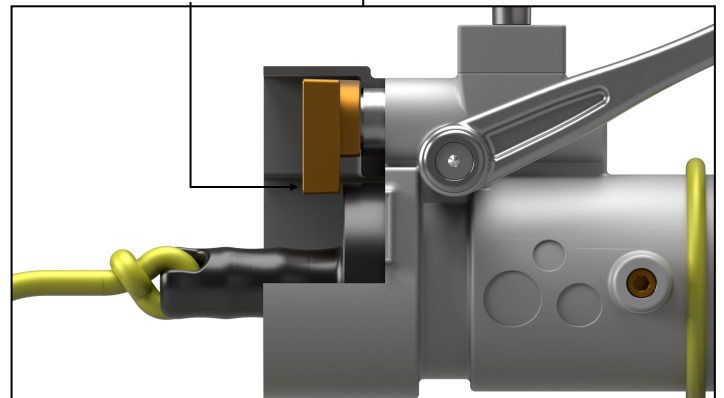
Ensure Key Is Engaged With Plug Body



Ensure Receptacle Bung Is Locked In Place With Pawl



Plug Key Engagement



Receptacle Key Engagement

# Glossary

Part No	Description
3199	PS Silicone Plug Cover Cap
RS1392	PS 660V 150A 4 Pin Plug (270) 25-C 35-40-G (241.1)
RS1394	PS 660V 150A 4 Pin Plug (270) 50-C 45-50-G (241.1)
RS1395	PS 660V 150A 4 Pin Plug (270) 70-C 50-55-G (241.1)
RS1396	PS 660V 150A 4 Pin Plug (270) 95-C 55-60-G (241.1)
RS1397	PS 660V 150A 4 Pin Receptacle (270) 25-C
RS1397QR	PS QR 660V 150A Receptacle (270) 25-C
RS1398	PS 660V 150A 4 Pin Receptacle (270) 35-C
RS1398QR	PS QR 660V 150A Receptacle (270) 35-C
RS1399	PS 660V 150A 4 Pin Receptacle (270) 50-C
RS1399QR	PS QR 660V 150A Receptacle (270) 50-C
RS1400	PS 660V 150A 4 Pin Receptacle (270) 70-C
RS1400QR	PS QR 660V 150A Receptacle (270) 70-C
RS1401	PS 660V 150A 4 Pin Receptacle (270) 95-C
RS1401QR	PS QR 660V 150A Receptacle (270) 95-C
RS1402	PS 1100V 150A 4 Pin Plug (90) 25-C 35-40-G (241.1)
RS1403	PS 1100V 150A 4 Pin Plug (90) 35-C 40-45-G (241.1)
RS1404	PS 1100V 150A 4 Pin Plug (90) 50-C 45-50-G (241.1)
RS1405	PS 1100V 150A 4 Pin Plug (90) 70-C 50-55-G (241.1)
RS1406	PS 1100V 150A 4 Pin Plug (90) 95-C 55-60-G (241.1)
RS1407	PS 1100V 150A 4 Pin Receptacle (90) 25-C
RS1407QR	PS QR 1100V 150A 4 Pin Receptacle (90) 25-C
RS1408	PS 1100V 150A Receptacle (90) 35-C
RS1408QR	PS QR 1100V 150A Receptacle (90) 35-C
RS1409	PS 1100V 150A 4 Pin Receptacle (90) 50-C
RS1409QR	PS QR 1100V 150A 4 Pin Receptacle (90) 50-C
RS1410	PS 1100V 150A Receptacle (90) 70-C
RS1410QR	PS QR 1100V 150A Receptacle (90) 70-C
RS1411	PS 1100V 150A 4 Pin Receptacle (90) 95-C
RS1411QR	PS QR 1100V 150A 4 Pin Receptacle (90) 95-C
RS1592	PS Comp Ring Kit 35 - 40 mm
RS1593	PS Comp Ring Kit 40 - 45 mm
RS1594	PS Comp Ring Kit 45 - 50 mm
RS1595	PS Comp Ring Kit 50 - 55 mm
RS1596	PS Comp Ring Kit 55 - 60 mm
RS1597	PS 12 / 20 Crimp Tubes 25mm <sup>2</sup>
RS1598	PS 12 /20 Crimp Tubes 35mm <sup>2</sup>
RS1599	PS 12 /20 Crimp Tubes 50mm <sup>2</sup>
RS1600	PS 12 /20 Crimp Tubes 70mm <sup>2</sup>
RS1601	PS 12 /20 Crimp Tubes 95mm <sup>2</sup>
RS1612	PS 12 / 68 Contact Crimp Pins 25mm <sup>2</sup>
RS1613	PS 12 / 68 Contact Crimp Pins 35mm <sup>2</sup>
RS1614	PS 12 / 68 Contact Crimp Pins 50mm <sup>2</sup>

Part No	Description
RS1615	PS 12 / 68 Contact Crimp Pins 70mm <sup>2</sup>
RS1616	PS 12 / 68 Contact Crimp Pins 95mm <sup>2</sup>
RS1768	PS RECEP Black Protective Bung
RS1804	PS Plug Cage KIT 25-95mm <sup>2</sup>
RS1805	PS 1100V 150A RECEP Blue Body Kit
RS1805QR	PS QR 1100V 150A RECEP Blue Body Kit
RS1806	PS 4 Pin RECEP Cage KIT 25-95mm <sup>2</sup>
RS1865	PS 660V 150A 4 Pin Plug Orange Body KIT
RS1866	PS 660V 150A RECEP Orange Body KIT
RS1866QR	PS QR 660V 150A 4 Pin RECEP Orange Body KIT
RS1969	PS 660V 150A 4P Plug Orange FLP Removable Body
RS1972	PS 1100V 150A 4P Plug Blue FLP Removable Body
RS2216	PS Comp Ring Kit 10 - 15 mm
RS2217	PS Comp Ring Kit 15 - 20 mm
RS2218	PS Comp Ring Kit 20 - 25 mm
RS2219	PS Comp Ring Kit 25 - 30 mm
RS2220	PS Comp Ring Kit 30 – 35 mm
RS2221	PS 660V 150A 4P Plug (270) 16-C 30-35-G (275.1)
RS2222	PS 660V 150A 4P Plug (270) 25-C 30-35-G (275.1)
RS2223	PS 660V 150A 4P Plug (270) 35-C 35-40-G (275.1)
RS2224	PS 660V 150A 4P Plug (270) 50-C 40-45-G (275.1)
RS2225	PS 1100V 150A 4P Plug (90) 16-C 30-35-G (275.1)
RS2226	PS 1100V 150A 4P Plug (90) 25-C 30-35-G (275.1)
RS2227	PS 1100V 150A 4P Plug (90) 35-C 35-40-G (275.1)
RS2228	PS 1100V 150A 4P Plug (90) 50-C 40-45-G (275.1)
RS2229	PS 12 / 20 Crimp Tubes 16mm <sup>2</sup>
RS2361	PS 12 / 20 Crimp Tubes 10mm <sup>2</sup>
RS2362	PS 12 / 68 Contact Crimp Pins 10mm <sup>2</sup>
RS2363	PS 12 / 68 Contact Crimp Pins 16mm <sup>2</sup>
RS2411	PS B2B 660V 150A Body Kit
RS2411QR	PS B2B QR 660V 150A Body Kit
RS2414	PS B2B 1100V 150A Body Kit
RS2414QR	PS B2B QR 1100V 150A Body Kit
RS2436	PS B2B Cage Kit
RS2451	PS 12 / 20 B2B 4P Insulator and Contact Set
RS2460	PS B2B 660V 150A Full Assembly
RS2460QR	PS B2B QR 660V 150A Full Assembly
RS2461	PS B2B 1100V 150A Full Assembly
RS2461QR	PS B2B QR 1100V 150A Full Assembly
RS2488	PS 660V 150A 4P Gland Bracket (270) 25-C 35-40-G (241.1)
RS2488QR	PS QR 660V 150A 4P Gland Bracket (270) 25-C 35-40-G (241.1)
RS2489	PS 660V 150A 4P Gland Bracket (270) 35-C 40-45-G (241.1)
RS2489QR	PS QR 660V 150A 4P Gland Bracket (270) 35-C 40-45-G (241.1)









# Flamepath Detail

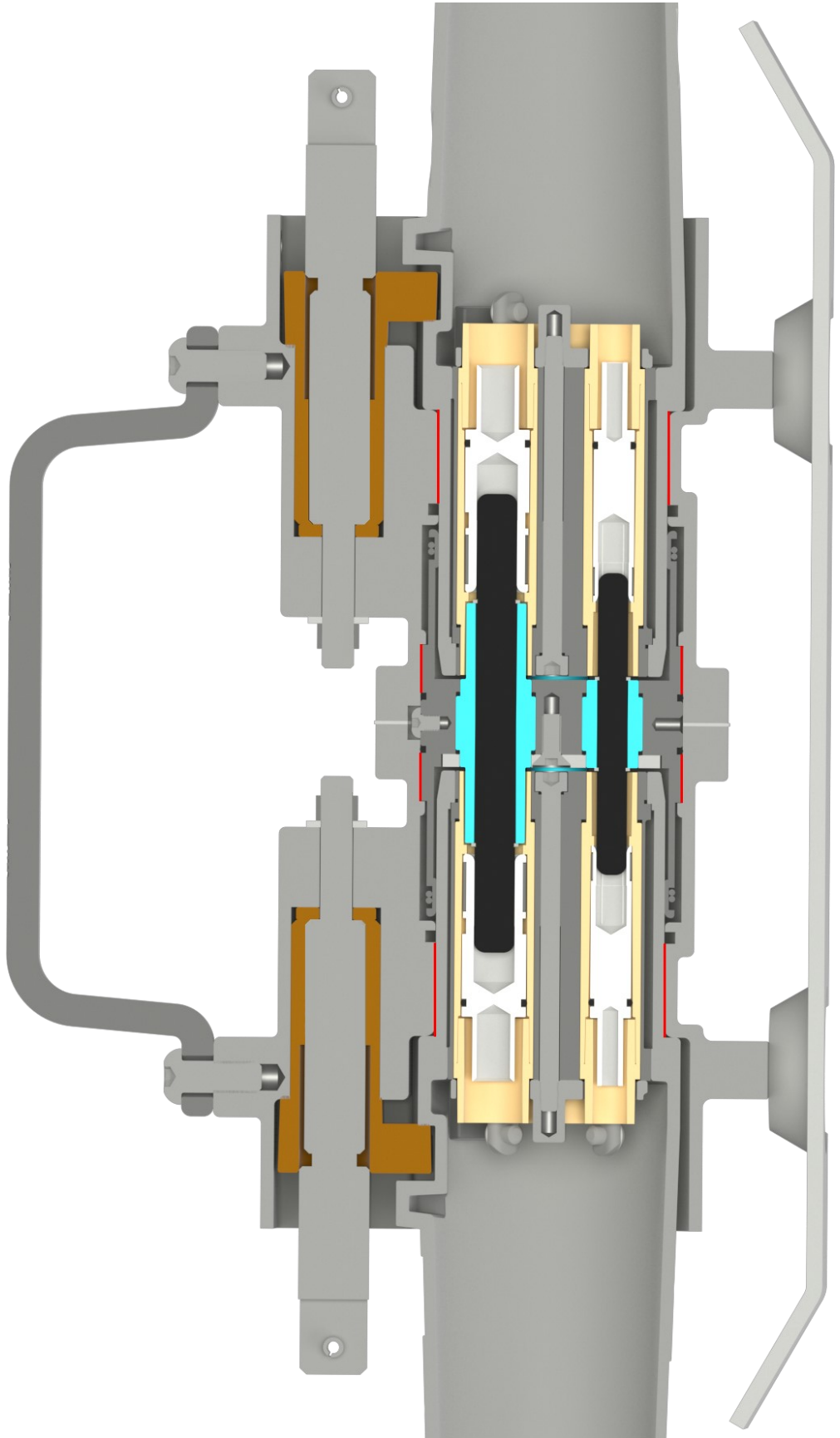
660/1100V 150A PS Back to Back

Legend	
	Flamepath
	Plug Insulators
	Receptacle Insulators
	Plug Contacts
	Receptacle Contacts
	Plug and Recept Housing
	Plug and Recept Cage

Flamepaths are not intended to be repaired. For further specifications on Flamepath joints, contact manufacturer for dimensions and tolerances.

Plug and Receptacle Disengagement Order  
**Pilot/Auxiliary – Phase Contacts – Scraping Earth – Flameproof Path.**

Pilot disengages first providing electrical isolation of phase during disconnection sequence.



# Flamepath Detail

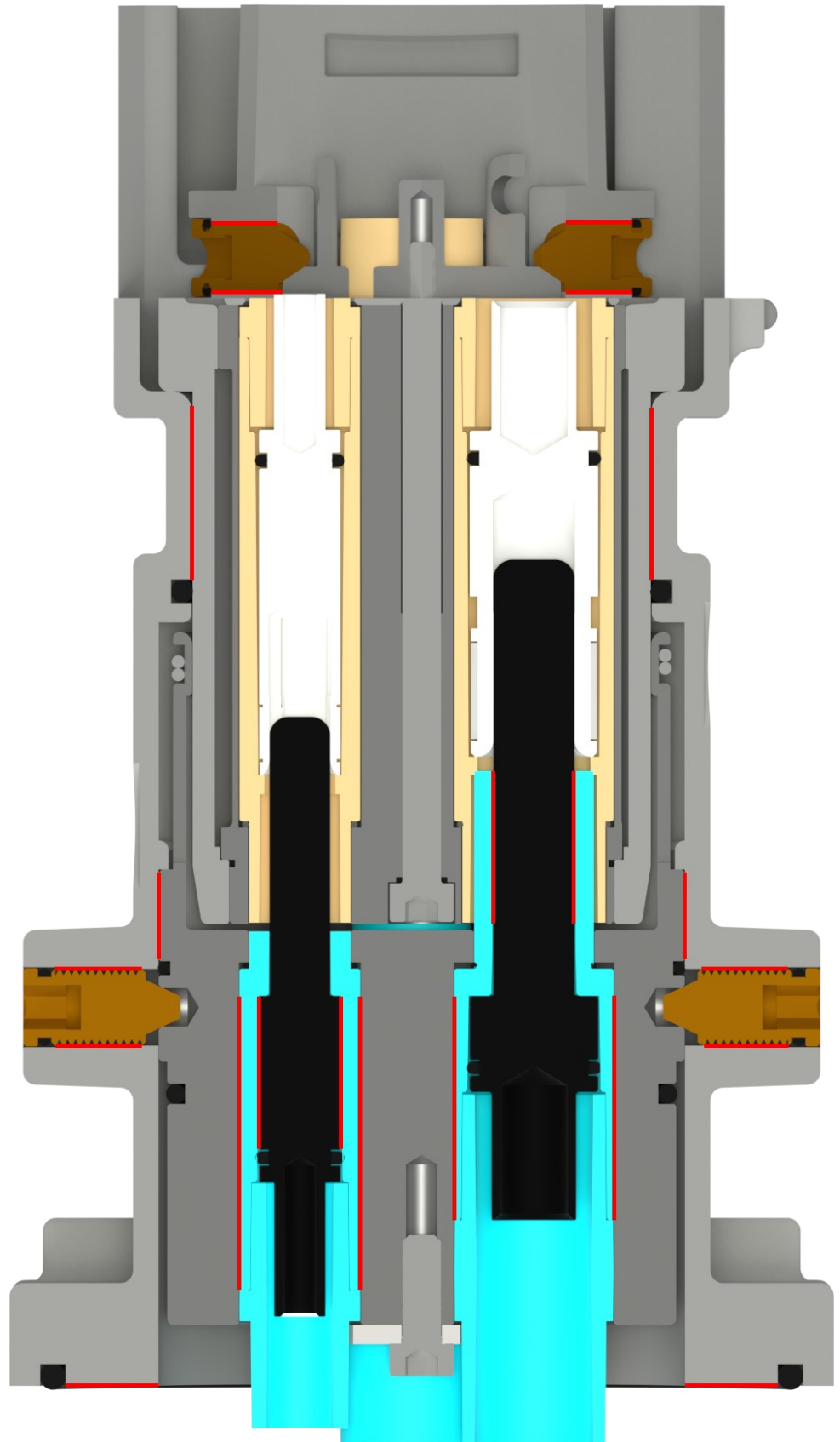
660/1100V 150A PS Plug And Receptacle

Legend	
	Flamepath
	Plug Insulators
	Receptacle Insulators
	Plug Contacts
	Receptacle Contact
	Cage/Barrel
	Cage Locking Screw

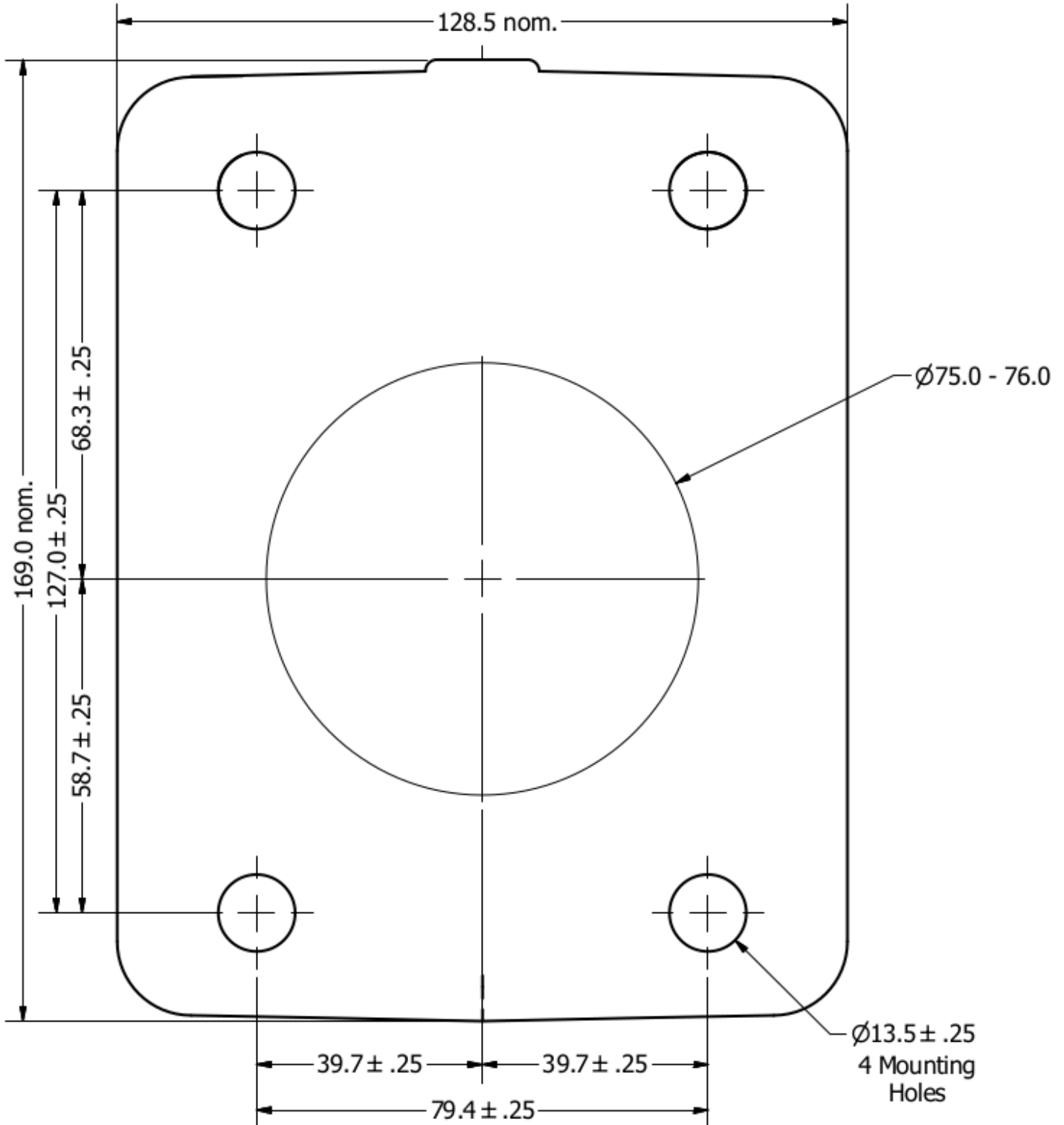
Flamepaths are not intended to be repaired. For further specifications on Flamepath joints, contact manufacturer for dimensions and tolerances.

Plug and Receptacle Disengagement Order  
**Pilot/Auxiliary – Phase Contacts – Scraping Earth – Flameproof Path.**

Pilot disengages first providing electrical isolation of phase during disconnection sequence.



# PS Receptacle Enclosure Profile For Mounting of 660/1100V 150A Receptacle



# Maintenance And Safety

## Plug and Receptacle System

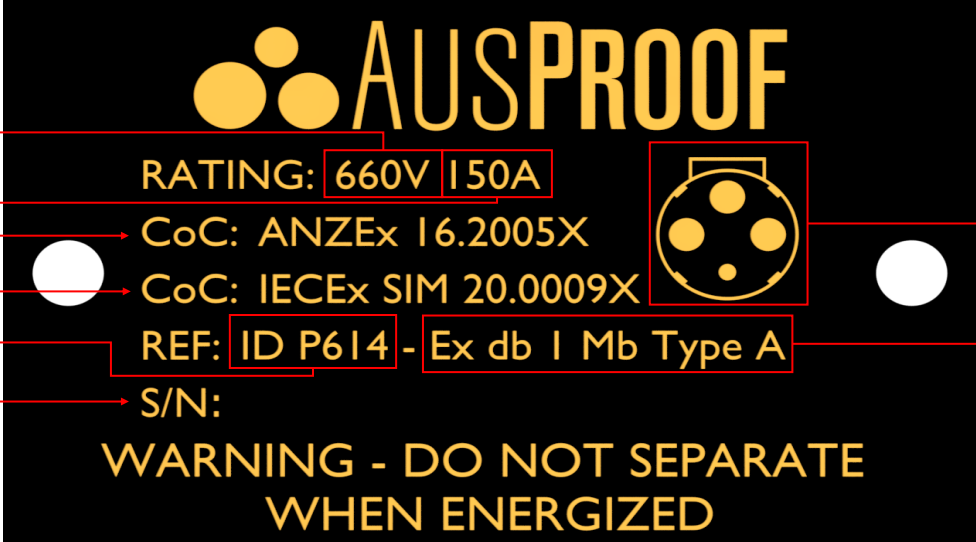
To ensure the safe operation of the plug and receptacles, personnel should be aware of minimal ongoing care and maintenance.

- When cables are not in use, ensure that protective covers have been fitted to provide adequate sealing against moisture and dust.
- The plugs and receptacles should never be used as a towing or anchor point.
- Inspect plug and receptacle to ensure no parts are missing, if parts are missing it is deemed unsafe for use.
- Inspect insertion end of plug and entry of receptacle to ensure there is no damage, as damage could compromise the flame path protection.
- Before connection inspect sealing ring in receptacle to ensure they are located correctly into groove.
- Before connection of plug and receptacle ensure connecting pins are not bent from previous misuse or incorrect assembly.
- Ensure plug has been inserted fully into receptacle before energizing.
- If witness marks are used, make sure they are brightly painted on the sheath, located where the cable enters the gland. This needs to be routinely inspected to check if a gap appears between the end of the gland and the witness mark. A gap may indicate that the cable has been under tension and that the termination in the coupler may have moved.
- The maximum surface temperature the plug will achieve when operating at full rated current at an ambient of 40 Deg Celsius will not exceed 85 Deg Celsius, which is therefore suitable for safe use in underground mines as it is less than 150 Deg Celsius.



# Ex Identification Labels

For 150A Plug Product



**AUSPROOF**

**RATING: 660V 150A**

CoC: ANZEx 16.2005X

CoC: IECEX SIM 20.0009X

REF: ID P614 - Ex db I Mb Type A

S/N:

**WARNING - DO NOT SEPARATE WHEN ENERGIZED**

Labels on the left side of the label:

- Volts
- Amps
- Certification Number
- Certification Number
- Plug Type
- Identification Number

Labels on the right side of the label:

- Pilot Orientation
- Protection Type



**AUSPROOF**

**RATING: 660V 150A**

CoC: ANZEx 16.2005X

CoC: IECEX SIM 20.0009X

REF: ID P614 - Ex db I Mb Type A

S/N:

**WARNING - DO NOT SEPARATE WHEN ENERGIZED**

Labels on the right side of the label:

- Phase
- Pilot

### Notes

- Ensure Receptacle is Earthed to Ensure Induced Voltages Are Not Developed
- Plug and Receptacle Are Not To Be Separated When Energised

Standards Applied: AS/NZS 1299:2009, AS/NZS 60079.0:2019, AS/NZS 60079.1:2015



# Ex Identification Labels

For 150A Receptacle Product

**AUSPROOF**

RATING: 660V 150A

CoC: ANZEx I6.2005X

CoC: IECEX SIM 20.0009X

REF: ID QRR614 - Ex db I Mb Type A

S/N:

WARNING - DO NOT SEPARATE WHEN ENERGIZED

Callouts:

- Volts
- Amps
- Certification Number
- Certification Number
- Quick Release Receptacle Type
- Identification Number
- Pilot Orientation
- Protection Type

**AUSPROOF**

RATING: 660V 150A

CoC: ANZEx I6.2005X

CoC: IECEX SIM 20.0009X

REF: ID R614 - Ex db I Mb Type A

S/N:

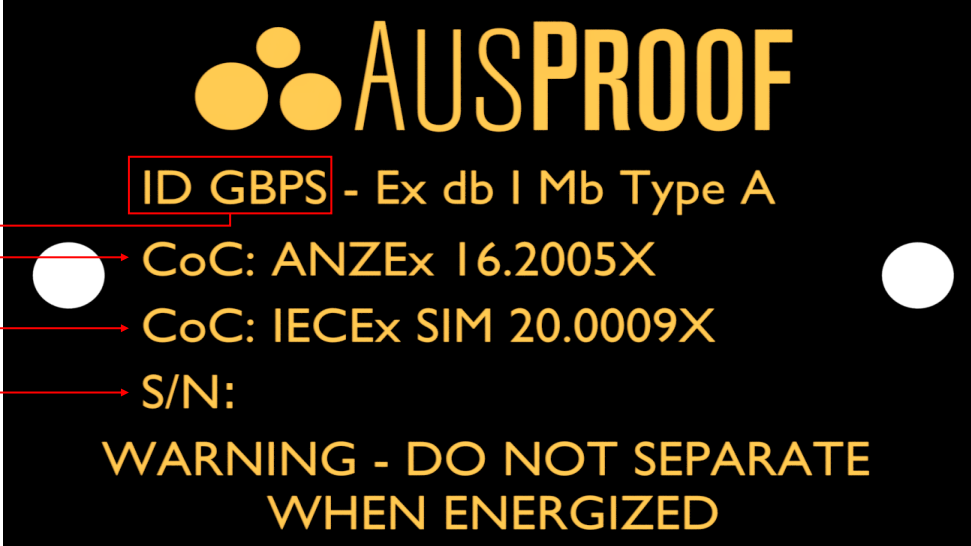
WARNING - DO NOT SEPARATE WHEN ENERGIZED

Callouts:

- Jack In Receptacle Type
- Phase
- Pilot

## Ex Identification Labels

For Gland Bracket and Gland Mount Product



**AUSPROOF**

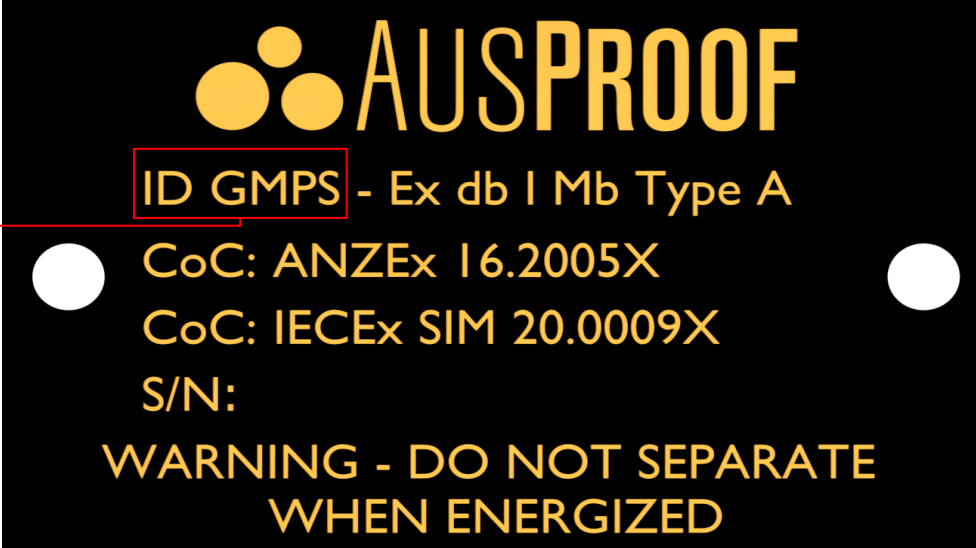
**ID GBPS** - Ex db I Mb Type A

Certification Number: **CoC: ANZEx 16.2005X**

Certification Number: **CoC: IECEX SIM 20.0009X**

Identification Number: **S/N:**

**WARNING - DO NOT SEPARATE  
WHEN ENERGIZED**



**AUSPROOF**

**ID GMPS** - Ex db I Mb Type A

**CoC: ANZEx 16.2005X**

**CoC: IECEX SIM 20.0009X**

**S/N:**

**WARNING - DO NOT SEPARATE  
WHEN ENERGIZED**

# Ex Identification Labels

For Back to Back 150A Product

**AUSPROOF**

RATING: 660V 150A

CoC: ANZEx 16.2005X

CoC: IECEX SIM 20.0009X

REF: ID QRBB614 - Ex db I Mb Type A

S/N:

WARNING - DO NOT SEPARATE WHEN ENERGIZED

Volts

Amps

Certification Number

Certification Number

Quick Release Back to Back Receptacle Type

Identification Number

Pilot Orientation

Protection Type

**AUSPROOF**

RATING: 660V 150A

CoC: ANZEx 16.2005X

REF: ID BB614 - Ex db I Mb Type A

S/N:

WARNING - DO NOT SEPARATE WHEN ENERGIZED

Back to Back Receptacle Type

Phase

Pilot

- In accordance with clause 11.3 of AS/NZS 60079-1:2015, the following fastener property class shall apply;
  - ◆ Fixing Gland Bracket to Receptacle: Property Class  $\geq$  4.6
  - ◆ Fixing Compression Clamp: Property Class  $\geq$  12.9
  - ◆ Fixing Receptacle to Ex d Enclosure: Property Class  $\geq$  4.6\*

*\*Note: Specified Fastener Property Class to be  $\geq$  the Fastener Property Class specified for the Ex enclosure.*
- Flameproof Joints Are Not Intended to Be Repaired: For Further Specifications On Flamepath Joints Contact The Original Manufacturer For Information On The Dimensions Of The Flameproof Joints





**6 Shona Avenue**

**Gladstone**

**Queensland 4680**

**Phone: +61 7 49784000**

**Facsimile: +61 7 49785685**

**Email: [ausproof@ausproof.com.au](mailto:ausproof@ausproof.com.au)**

**Website: <https://www.ausproof.com.au/>**