

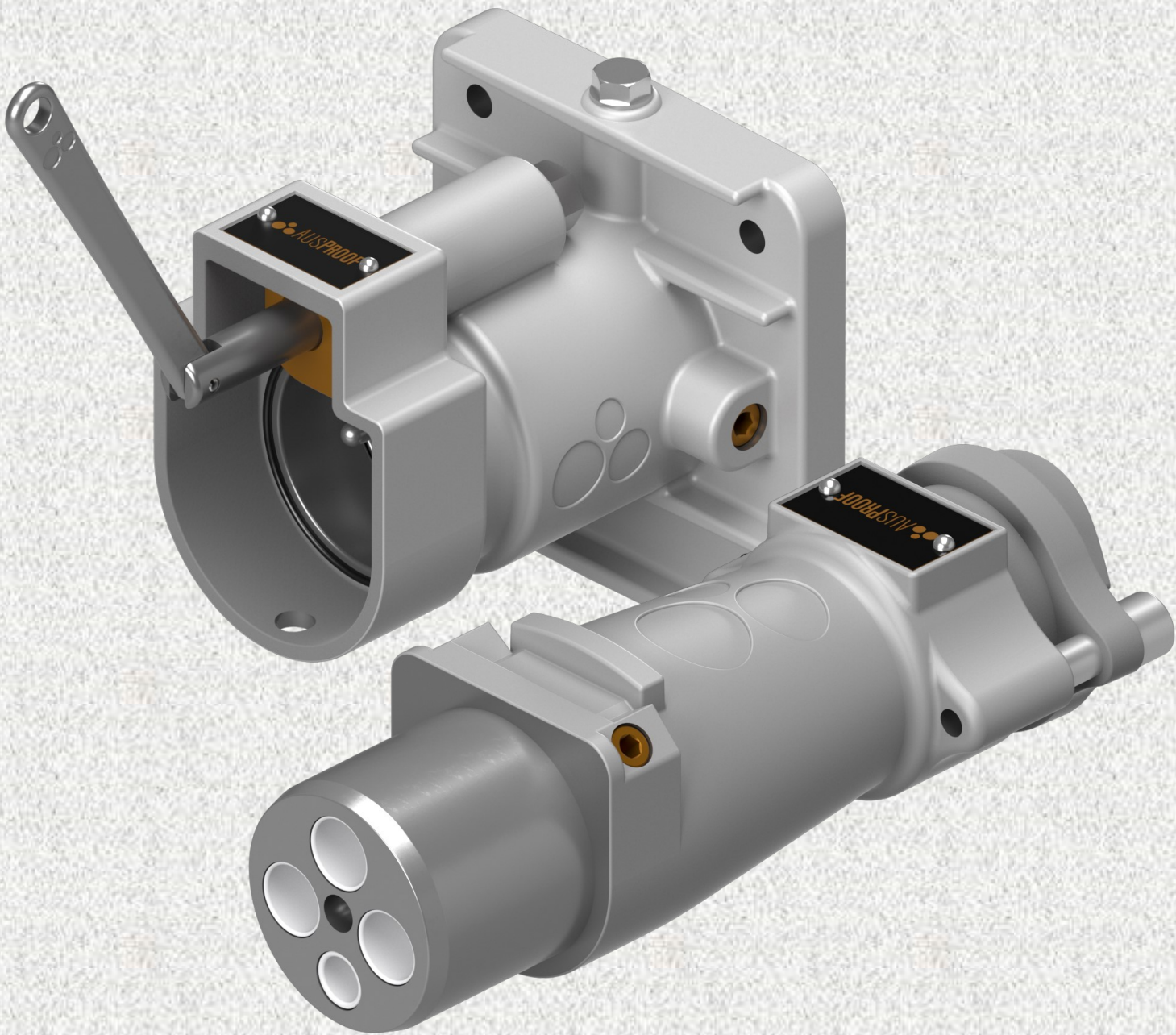


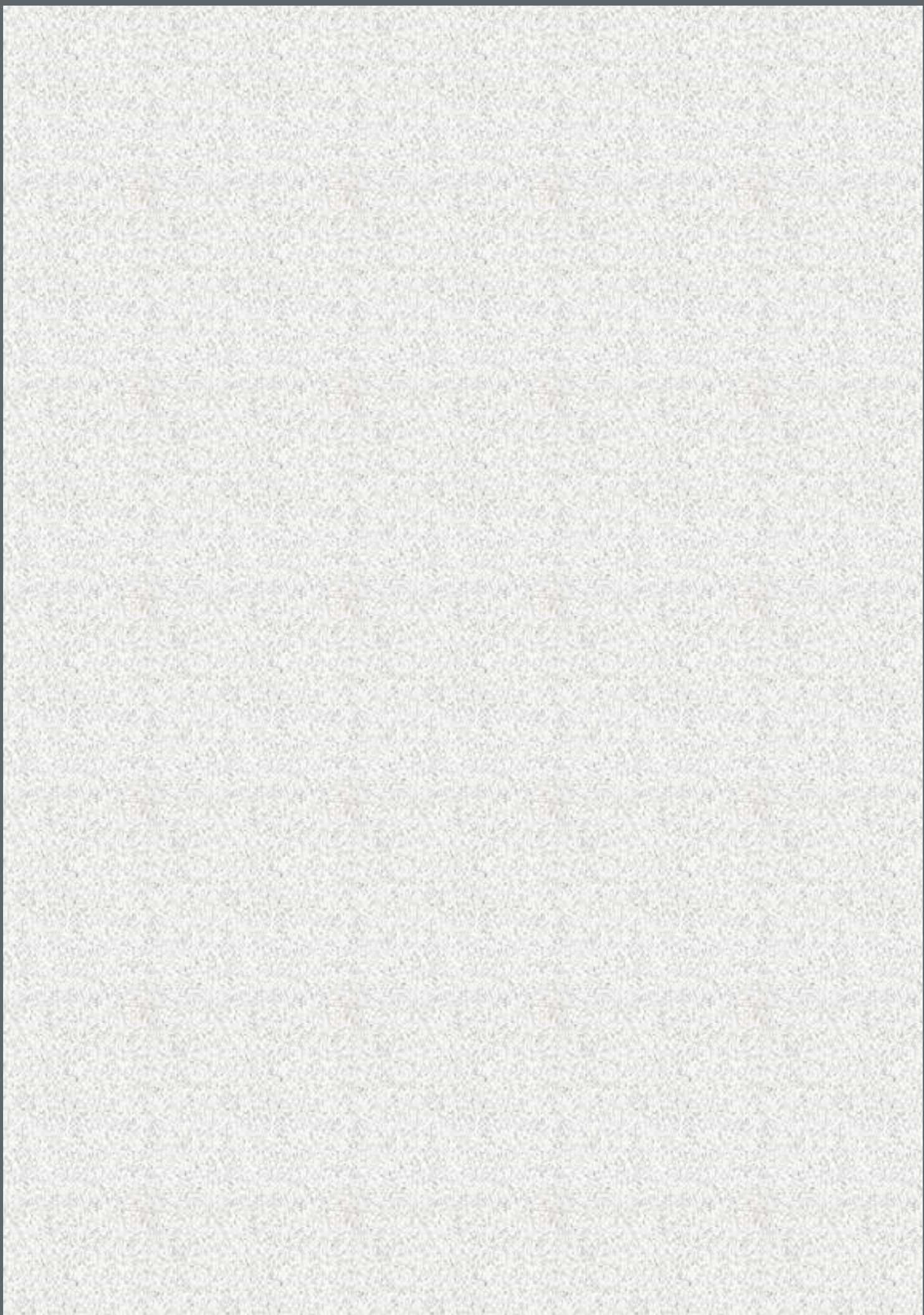
Restrained Plugs And Receptacles

PES Range

Ex 60A

Non-Ex 90A




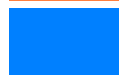



Index





Section 1

Description


Ex 60 Amp

	Ex 660V 60A Plug Ex 660V 60A Receptacle
	Ex 660V 60A Receptacle Gland Bracket (RGB) Ex 660V 60A Back To Back (B2B)
	Ex 1100V 60A Plug Ex 1100V 60A Receptacle
	Ex 1100V 60A Receptacle Gland Bracket (RGB) Ex 1100V 60A Back To Back (B2B)




Non-Ex 90 Amp

	FR 660V 60A (90A) Plug FR 660V 60A (90A) Receptacle
	FR 660V 60A (90A) Receptacle Gland Bracket (RGB) FR 660V 60A (90A) Back To Back (B2B)
	FR 1100V 60A (90A) Plug FR 1100V 60A (90A) Receptacle
	FR 1100V 60A (90A) Receptacle Gland Bracket (RGB) FR 1100V 60A (90A) Back To Back (B2B)

Termination Procedures


	660V/1100V 60A/90A Plug 660V/1100V 60A/90A Receptacle 660V/1100V 60A/90A Receptacle Gland Bracket (RGB)
---	---

Accessories

	PES Range Lockout Device Location PES Range Plug and Receptacle Accessories
	PES Range Product Handling PES Range Glossary
	Notes

Section 2




Flamepath Detail

	660V/1100V 60A/90A Back to Back I
	660V/1100V 60A/90A Plug and Receptacle II

Mounting Details/Maintenance

	PES Receptacle Mounting Profile Drawing III
	Maintenance and Safety IV

Identification Labels

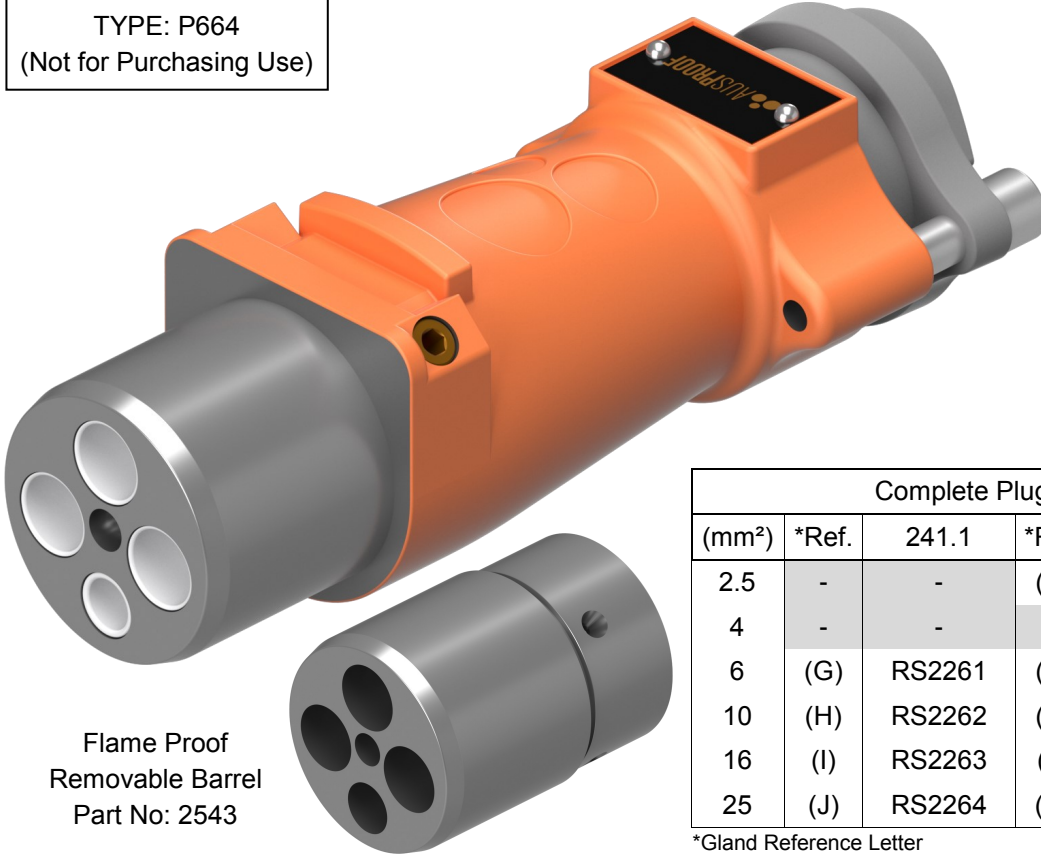
	Ex Identification Labels V
	Non-Ex Identification Labels VIII
	Conditions of Use X
	Notes XI



Pilot Orientation

Pre-Built To Suit Cable Type

TYPE: P664
(Not for Purchasing Use)



Flame Proof
Removable Barrel
Part No: 2543

Complete Plug To Suit Cable Type						
(mm ²)	*Ref.	241.1	*Ref.	2S	*Ref.	5 Core
2.5	-	-	(C)	RS2265	(C)	RS2270
4	-	-	-	-	(D)	RS2271
6	(G)	RS2261	(D)	RS2266	(E)	RS2272
10	(H)	RS2262	(D)	RS2267	(F)	RS2273
16	(I)	RS2263	(F)	RS2268	-	-
25	(J)	RS2264	(G)	RS2269	-	-

*Gland Reference Letter

Part Breakdown For Customized Cables; One Of Each Type Required



6 / 20 Style Tube Contact Sets		
(mm ²)	ID (mm)	Stock No.
2.5	2.4	RS2233
4	3.1	RS2234
6	3.8	RS2235
10	4.7	RS2236
16	6.5	RS2237
25	7.5	RS2238

② PES Barrel
Stock No: RS2232



Compression Gland		
*Ref.	Gland ID	Stock No.
(A)	10-14	RS2239
(B)	14-17	RS2240
(C)	17-20	RS2241
(D)	20-23	RS2242
(E)	23-26	RS2243
(F)	26-29	RS2244
(G)	29-32	RS2245
(H)	32-35	RS2246
(I)	35-38	RS2247
(J)	38-41	RS2248



③ 660V PES Plug Body
Stock No: RS2231

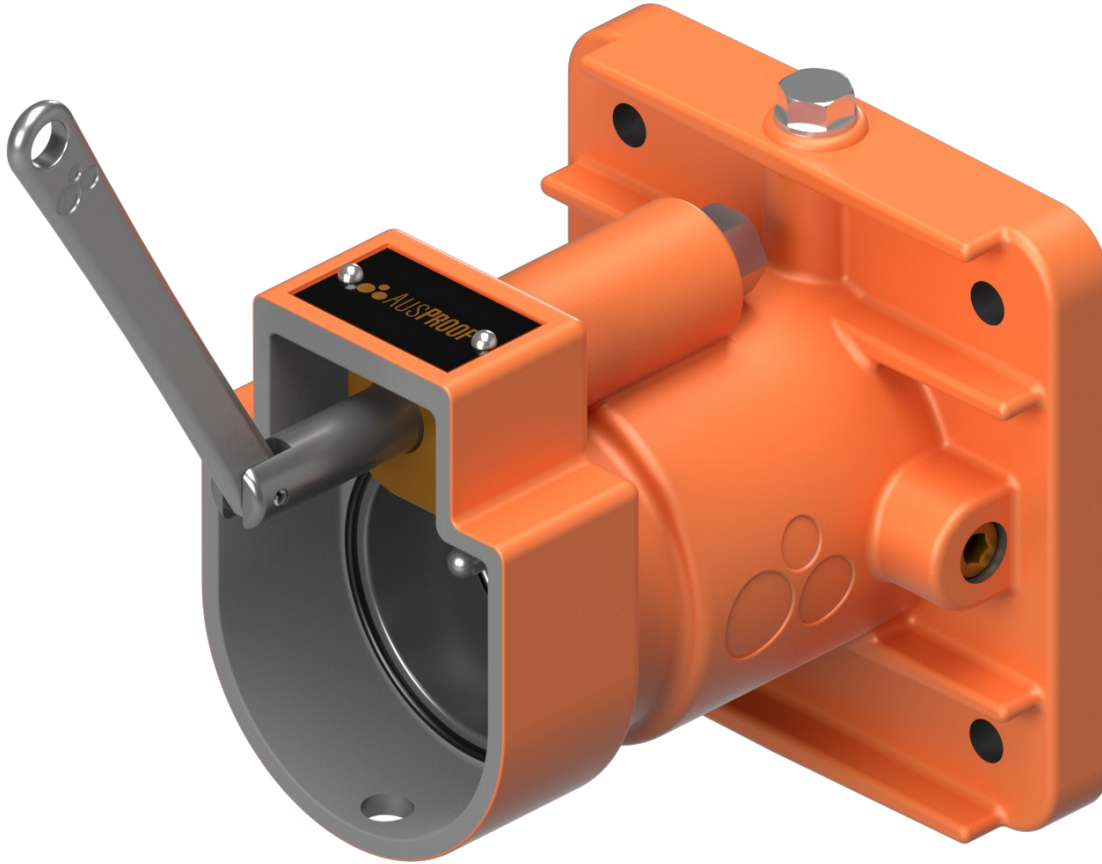
*Gland Reference Letter

Ex 660V 60A PES Receptacle

3 Phase 1 Pilot



Pilot Orientation

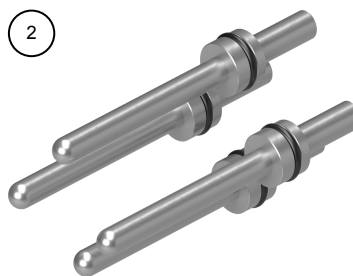


TYPE: R664
(Not for Purchasing Use)

Complete Receptacle to Suit mm ² Cable	
(mm ²)	(Jack In) Stock No.
2.5	RS2274
4	RS2275
6	RS2276
10	RS2277
16	RS2278
25	RS2279

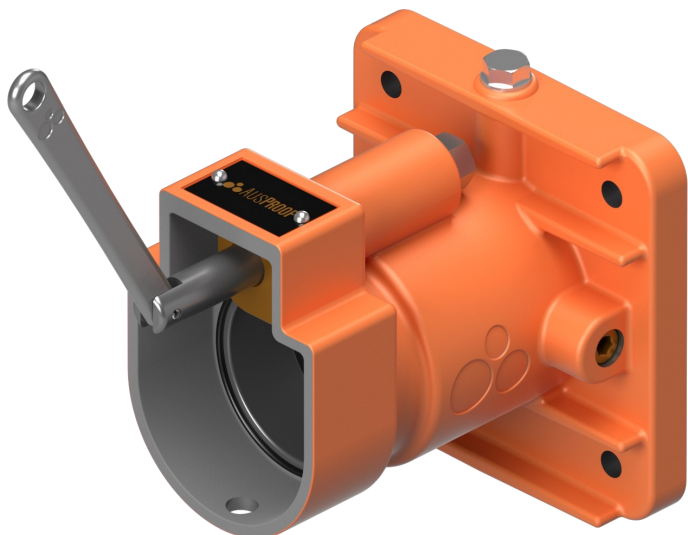
Part Breakdown For Customized Cables; One Of Each Type Required

1 660V PES Receptacle Body
Stock No: RS2249



6 / 54 Style Pins Contact Sets		
(mm ²)	ID (mm)	Stock No.
2.5	2.4	RS2251
4	3.1	RS2252
6	3.8	RS2253
10	4.7	RS2254
16	6.5	RS2255
25	7.5	RS2256

3 PES Receptacle Cage
Stock No: RS2250

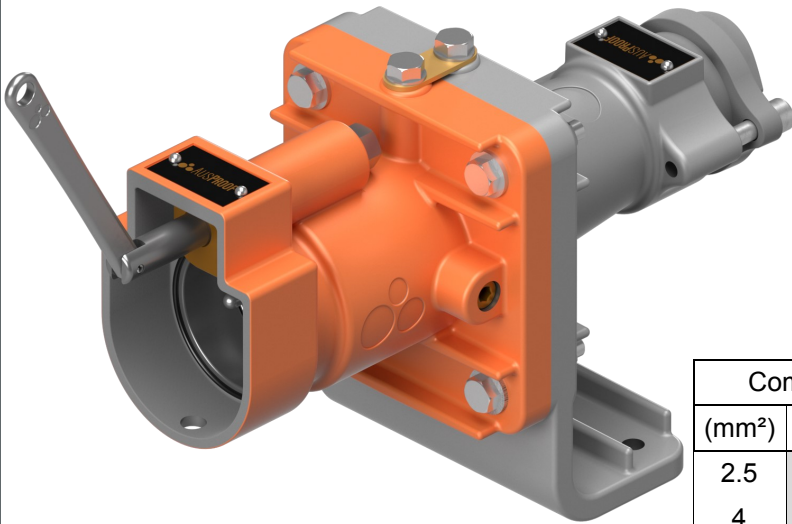


Ex 660V 60A Receptacle Gland Bracket (RGB)

3 Phase 1 Pilot

Built To Suit Cable Type

TYPE: GB664
(Not for Purchasing Use)

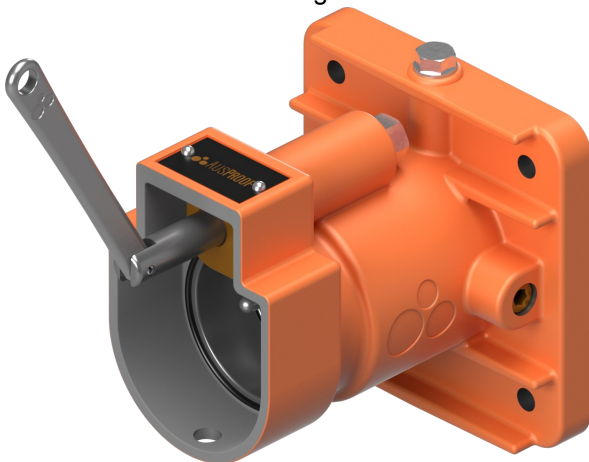


Complete Receptacle Gland Bracket To Suit Cable Type						
(mm ²)	*Ref.	241.1	*Ref.	2S	*Ref.	5 Core
2.5	-	-	(C)	RS2284	(C)	RS2289
4	-	-	-	-	(D)	RS2290
6	(G)	RS2280	(D)	RS2285	(E)	RS2291
10	(H)	RS2281	(D)	RS2286	(F)	RS2292
16	(I)	RS2282	(F)	RS2287	-	-
25	(J)	RS2283	(G)	RS2288	-	-

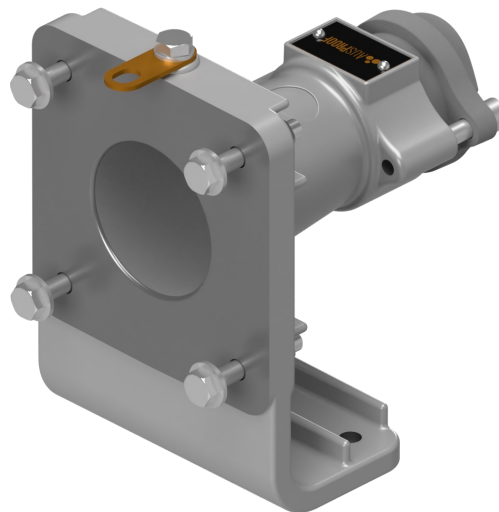
*Gland Reference Letter

Part Breakdown For Customized Cables; One Of Each Type Required

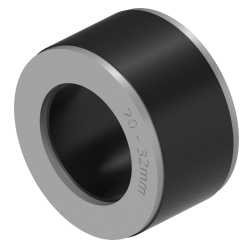
1 660V 60A PES Ex Receptacle
Stock No: Refer to Page 4



2 PES Gland Bracket Body Kit
Stock No: RS2259



3

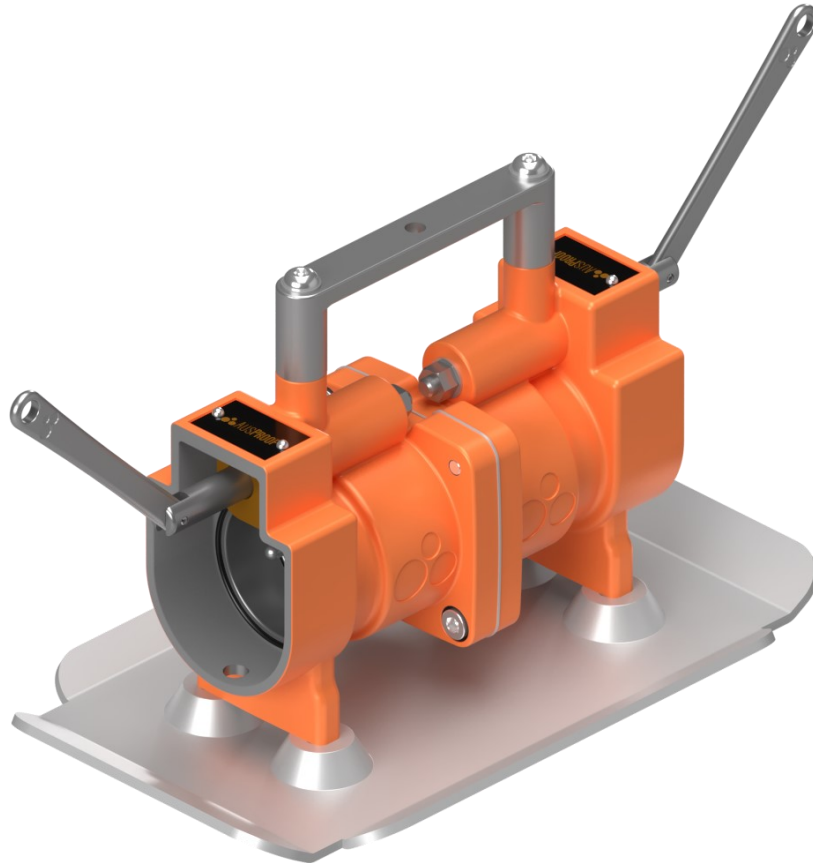


Compression Gland		
*Ref.	Gland ID	Stock No.
(A)	10-14	RS2239
(B)	14-17	RS2240
(C)	17-20	RS2241
(D)	20-23	RS2242
(E)	23-26	RS2243
(F)	26-29	RS2244
(G)	29-32	RS2245
(H)	32-35	RS2246
(I)	35-38	RS2247
(J)	38-41	RS2248

*Gland Reference Letter

Ex 660V 60A Back To Back (B2B)

3 Phase 1 Pilot



TYPE: BB664
(Not for Purchasing Use)

Complete Back to Back
Stock No: RS2456

Part Breakdown For Repairs; One Of Each Type Required



① 660V PES B2B Body Kit
Stock No: RS2407



② PES B2B Contact/Insulator Set
Stock No: RS2450



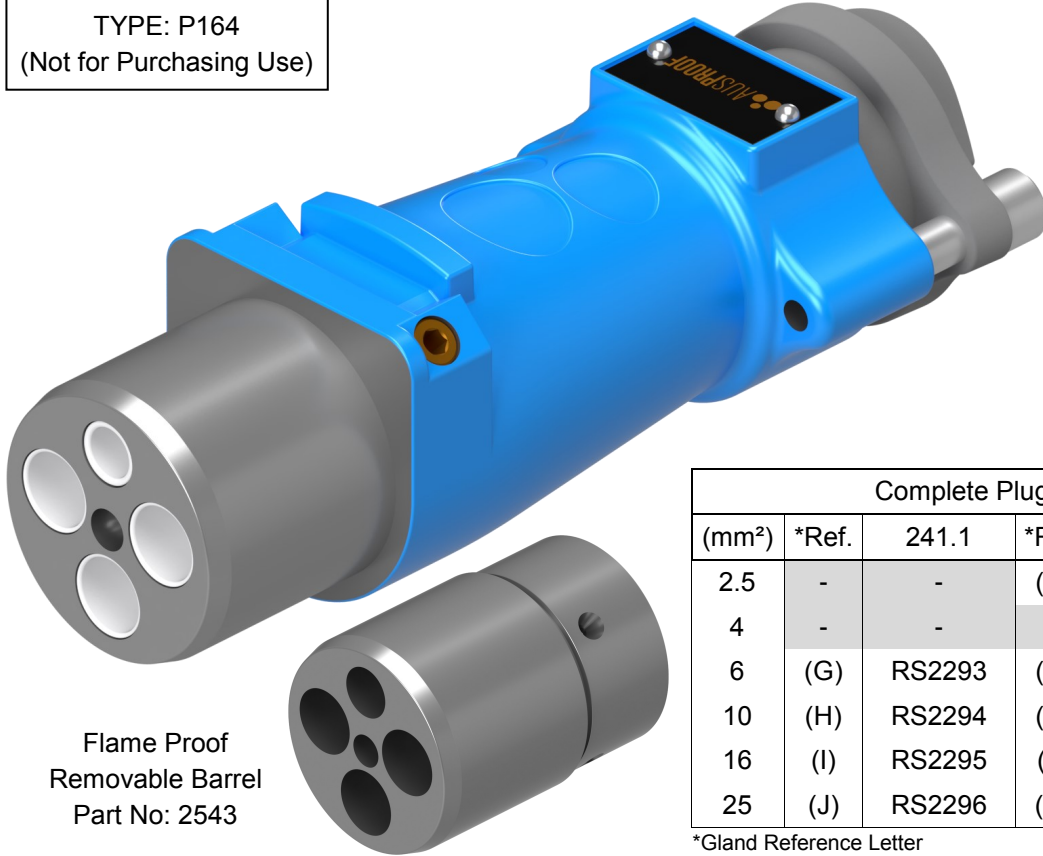
③ PES B2B Cage Kit
Stock No: RS2435



Pilot Orientation

Pre-Built To Suit Cable Type

TYPE: P164
(Not for Purchasing Use)

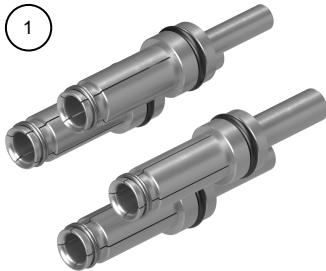


Flame Proof
Removable Barrel
Part No: 2543

Complete Plug To Suit Cable Type						
(mm ²)	*Ref.	241.1	*Ref.	2S	*Ref.	5 Core
2.5	-	-	(C)	RS2297	(C)	RS2302
4	-	-	-	-	(D)	RS2303
6	(G)	RS2293	(D)	RS2298	(E)	RS2304
10	(H)	RS2294	(D)	RS2299	(F)	RS2305
16	(I)	RS2295	(F)	RS2300	-	-
25	(J)	RS2296	(G)	RS2301	-	-

*Gland Reference Letter

Part Breakdown For Customized Cables; One Of Each Type Required



6 / 20 Style Tube Contact Sets		
(mm ²)	ID (mm)	Stock No.
2.5	2.4	RS2233
4	3.1	RS2234
6	3.8	RS2235
10	4.7	RS2236
16	6.5	RS2237
25	7.5	RS2238

② PES Barrel
Stock No: RS2232



Compression Gland		
*Ref.	Gland ID	Stock No.
(A)	10-14	RS2239
(B)	14-17	RS2240
(C)	17-20	RS2241
(D)	20-23	RS2242
(E)	23-26	RS2243
(F)	26-29	RS2244
(G)	29-32	RS2245
(H)	32-35	RS2246
(I)	35-38	RS2247
(J)	38-41	RS2248



③ 1100V PES Plug Body
Stock No: RS2257

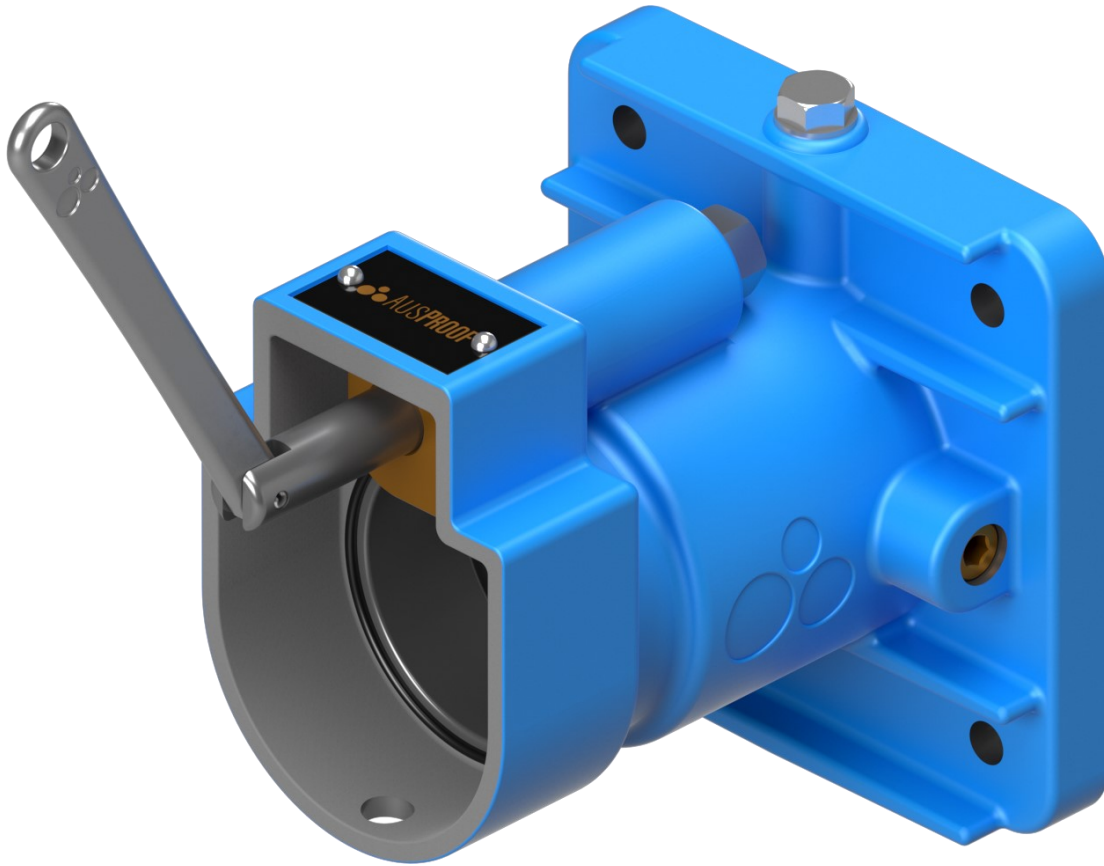
*Gland Reference Letter



Pilot Orientation

Ex 1100V 60A PES Receptacle

3 Phase 1 Pilot

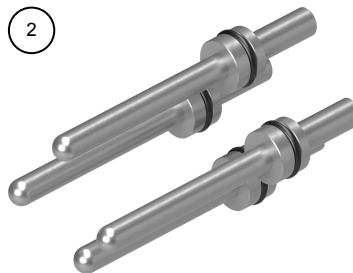


TYPE: R164
(Not for Purchasing Use)

Complete Receptacle to Suit mm ² Cable	
(mm ²)	(Jack In) Stock No.
2.5	RS2306
4	RS2307
6	RS2308
10	RS2309
16	RS2310
25	RS2311

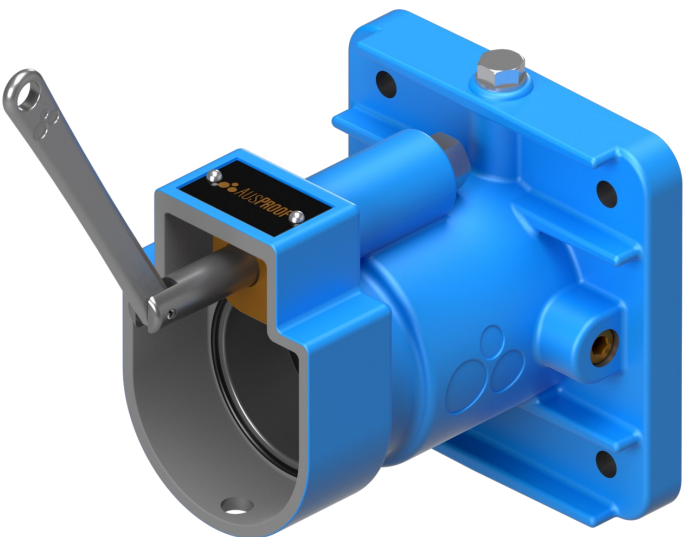
Part Breakdown For Customized Cables; One Of Each Type Required

1 1100V PES Receptacle Body
Stock No: RS2258



6 / 54 Style Pins Contact Sets		
(mm ²)	ID (mm)	Stock No.
2.5	2.4	RS2251
4	3.1	RS2252
6	3.8	RS2253
10	4.7	RS2254
16	6.5	RS2255
25	7.5	RS2256

3 PES Receptacle Cage
Stock No: RS2250

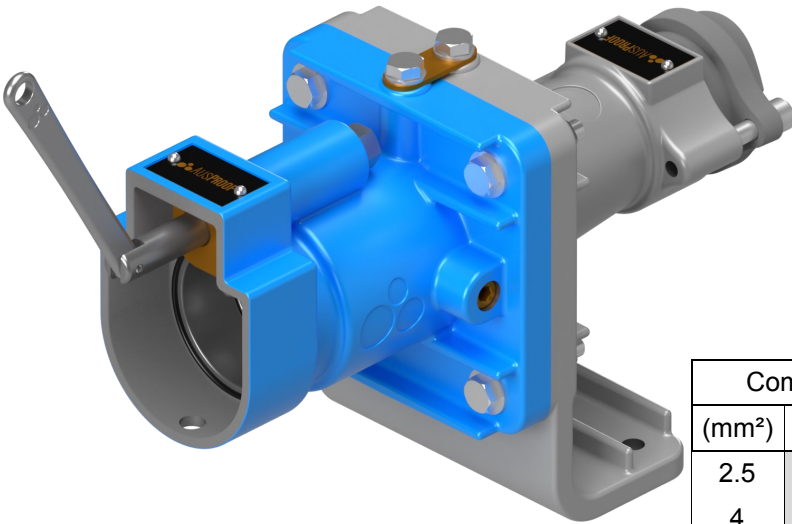


Ex 1100V 60A Receptacle Gland Bracket (RGB)

3 Phase 1 Pilot

Built To Suit Cable Type

TYPE: GB164
(Not for Purchasing Use)

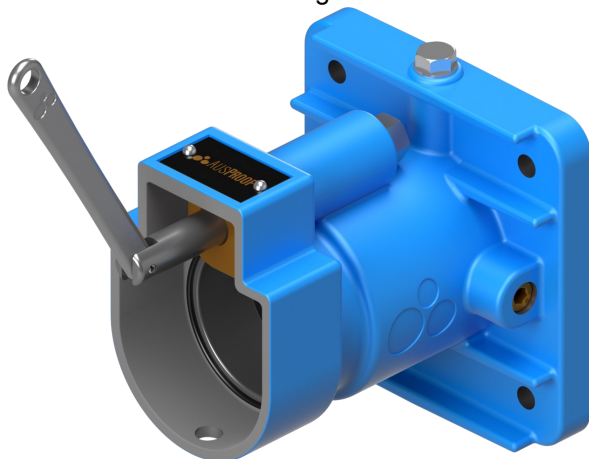


Complete Receptacle Gland Bracket To Suit Cable Type						
(mm ²)	*Ref.	241.1	*Ref.	2S	*Ref.	5 Core
2.5	-	-	(C)	RS2316	(C)	RS2321
4	-	-	-	-	(D)	RS2322
6	(G)	RS2312	(D)	RS2317	(E)	RS2323
10	(H)	RS2313	(D)	RS2318	(F)	RS2324
16	(I)	RS2314	(F)	RS2319	-	-
25	(J)	RS2315	(G)	RS2320	-	-

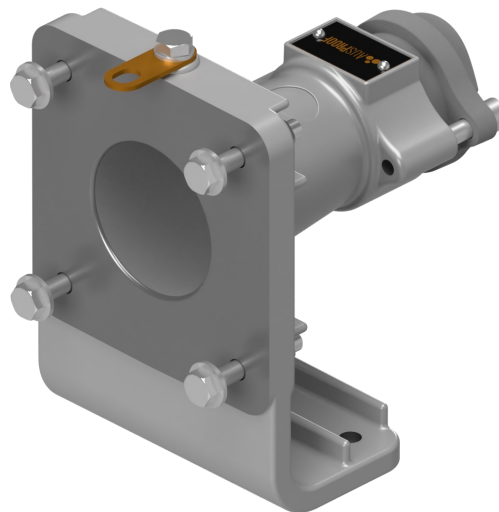
*Gland Reference Letter

Part Breakdown For Customized Cables; One Of Each Type Required

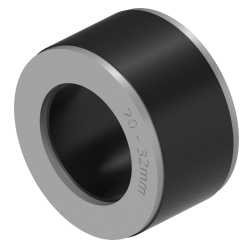
1 1100V 60A PES Ex Receptacle
Stock No: Refer to Page 8



2 PES Gland Bracket Body Kit
Stock No: RS2259



3

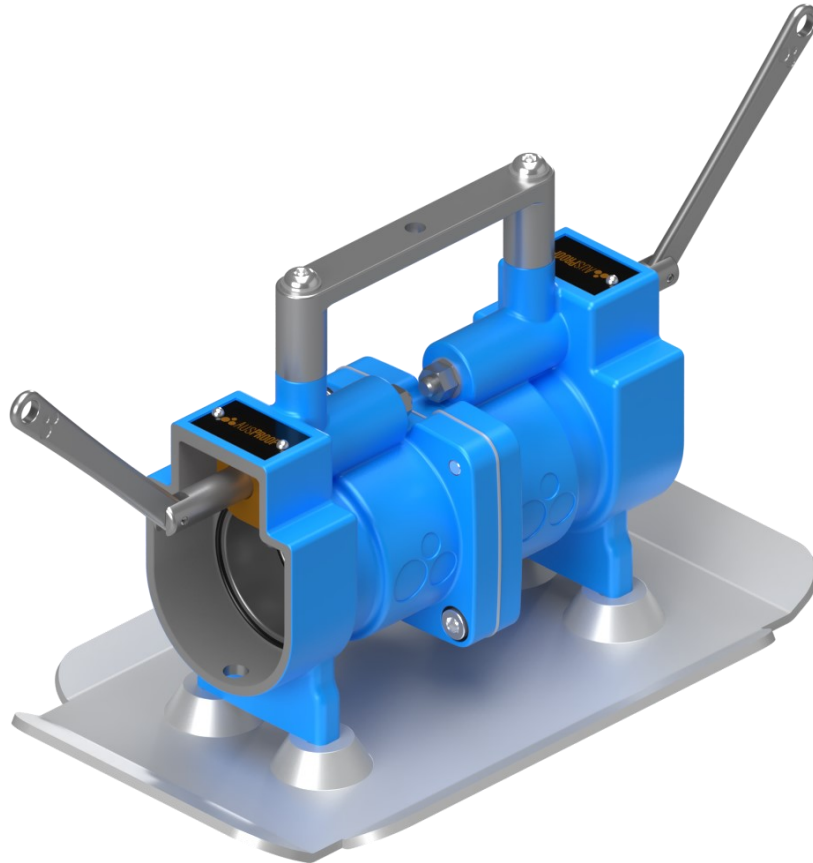


Compression Gland		
*Ref.	Gland ID	Stock No.
(A)	10-14	RS2239
(B)	14-17	RS2240
(C)	17-20	RS2241
(D)	20-23	RS2242
(E)	23-26	RS2243
(F)	26-29	RS2244
(G)	29-32	RS2245
(H)	32-35	RS2246
(I)	35-38	RS2247
(J)	38-41	RS2248

*Gland Reference Letter

Ex 1100V 60A Back To Back (B2B)

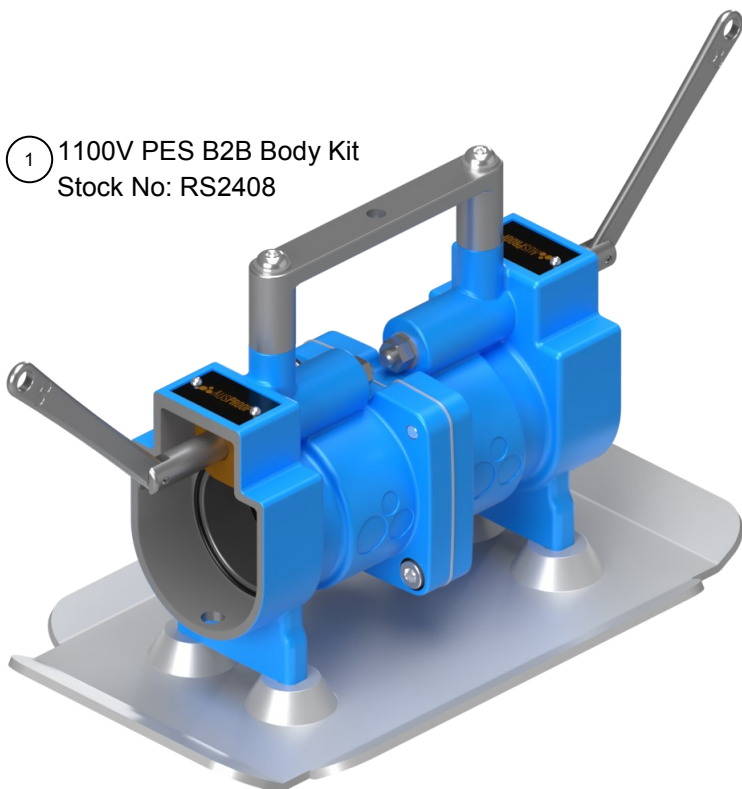
3 Phase 1 Pilot



TYPE: BB164
(Not for Purchasing Use)

Complete Back to Back
Stock No: RS2458

Part Breakdown For Repairs; One Of Each Type Required



① 1100V PES B2B Body Kit
Stock No: RS2408



② PES B2B Contact/Insulator Set
Stock No: RS2450

③ PES B2B Cage Kit
Stock No: RS2435



FR 660V 60A (90A) PES Plug (Non-Ex)

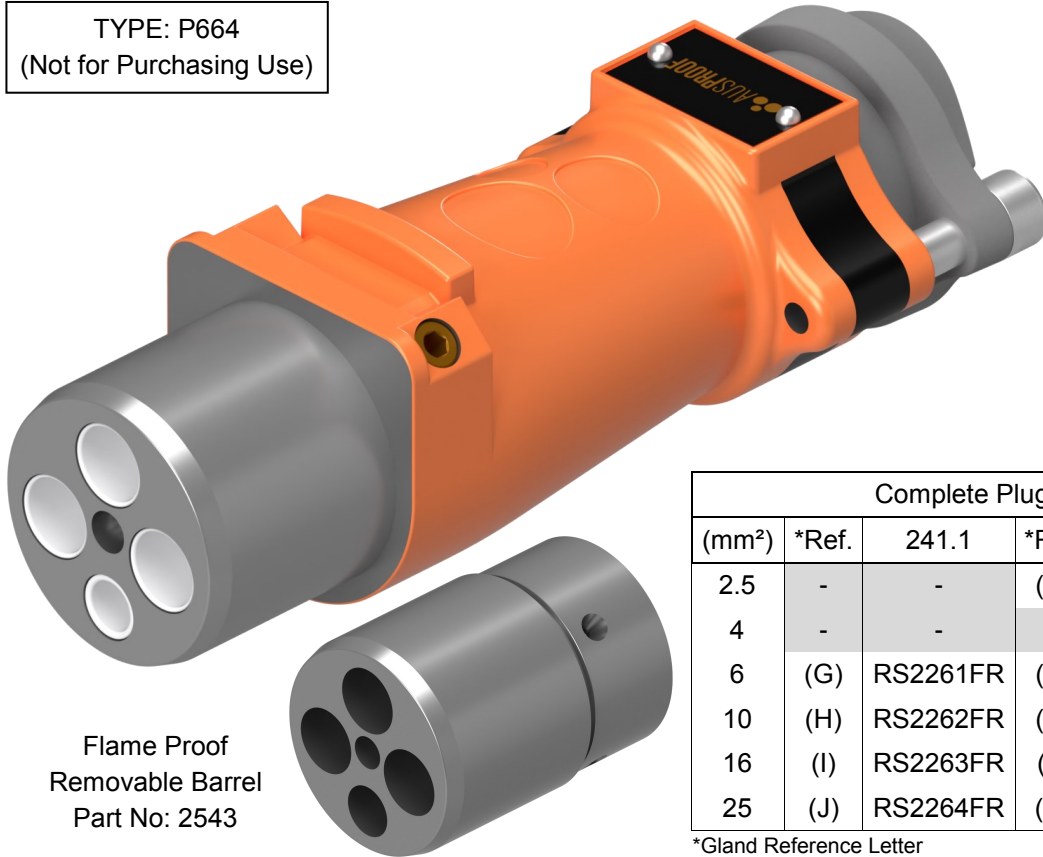
3 Phase 1 Pilot



Pilot Orientation

Pre-Built To Suit Cable Type

TYPE: P664
(Not for Purchasing Use)



Flame Proof
Removable Barrel
Part No: 2543

Complete Plug To Suit Cable Type						
(mm ²)	*Ref.	241.1	*Ref.	2S	*Ref.	5 Core
2.5	-	-	(C)	RS2265FR	(C)	RS2270FR
4	-	-	-	-	(D)	RS2271FR
6	(G)	RS2261FR	(D)	RS2266FR	(E)	RS2272FR
10	(H)	RS2262FR	(D)	RS2267FR	(F)	RS2273FR
16	(I)	RS2263FR	(F)	RS2268FR	-	-
25	(J)	RS2264FR	(G)	RS2269FR	-	-

*Gland Reference Letter

Part Breakdown For Customized Cables; One Of Each Type Required



6 / 20 Style Tube Contact Sets		
(mm ²)	ID (mm)	Stock No.
2.5	2.4	RS2233
4	3.1	RS2234
6	3.8	RS2235
10	4.7	RS2236
16	6.5	RS2237
25	7.5	RS2238

② PES Barrel
Stock No: RS2232



Compression Gland		
*Ref.	Gland ID	Stock No.
(A)	10-14	RS2239
(B)	14-17	RS2240
(C)	17-20	RS2241
(D)	20-23	RS2242
(E)	23-26	RS2243
(F)	26-29	RS2244
(G)	29-32	RS2245
(H)	32-35	RS2246
(I)	35-38	RS2247
(J)	38-41	RS2248

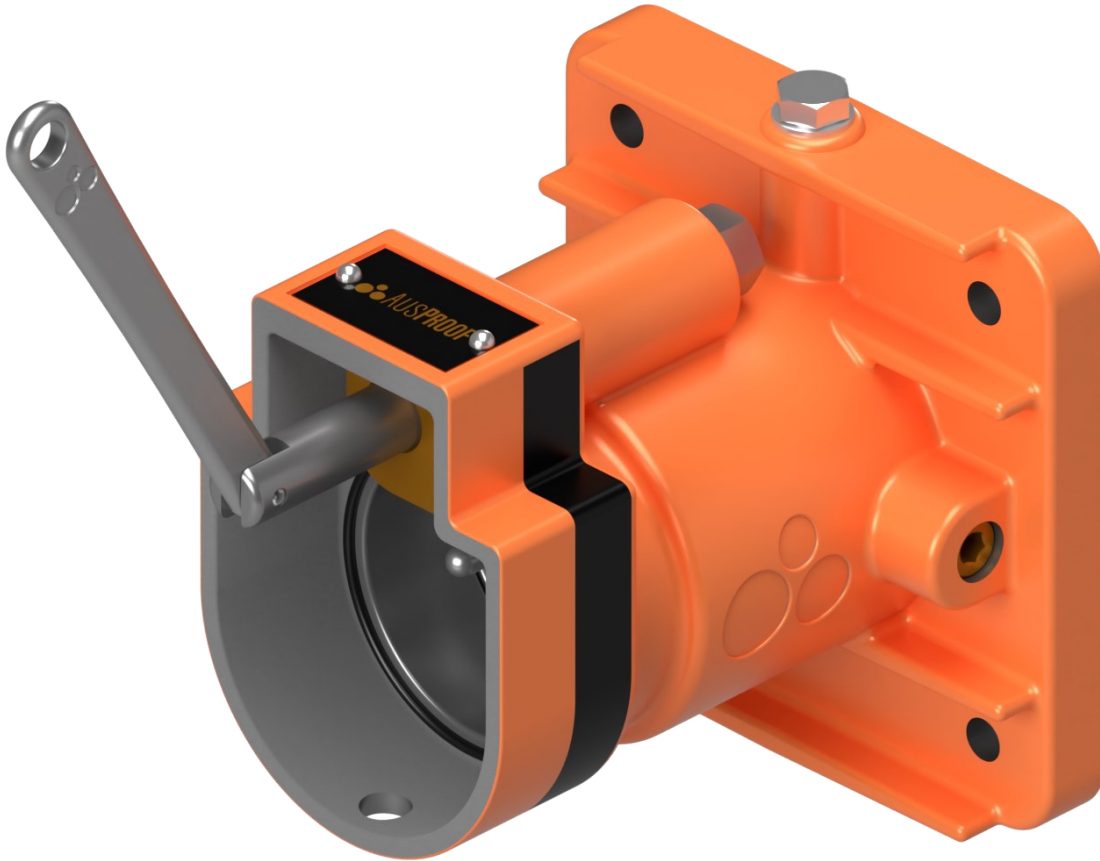


③ 660V FR PES Plug Body
Stock No: RS2231FR

*Gland Reference Letter

FR 660V 60A (90A) PES Receptacle (Non-EX)

3 Phase 1 Pilot

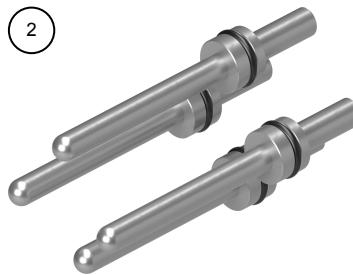


TYPE: R664
(Not for Purchasing Use)

Complete Receptacle to Suit mm ² Cable	
(mm ²)	(Jack In) Stock No.
2.5	RS2274FR
4	RS2275FR
6	RS2276FR
10	RS2277FR
16	RS2278FR
25	RS2279FR

Part Breakdown For Customized Cables; One Of Each Type Required

1 660V FR PES Receptacle Body
Stock No: RS2249FR



6 / 54 Style Pins Contact Sets		
(mm ²)	ID (mm)	Stock No.
2.5	2.4	RS2251
4	3.1	RS2252
6	3.8	RS2253
10	4.7	RS2254
16	6.5	RS2255
25	7.5	RS2256

3 PES Receptacle Cage
Stock No: RS2250

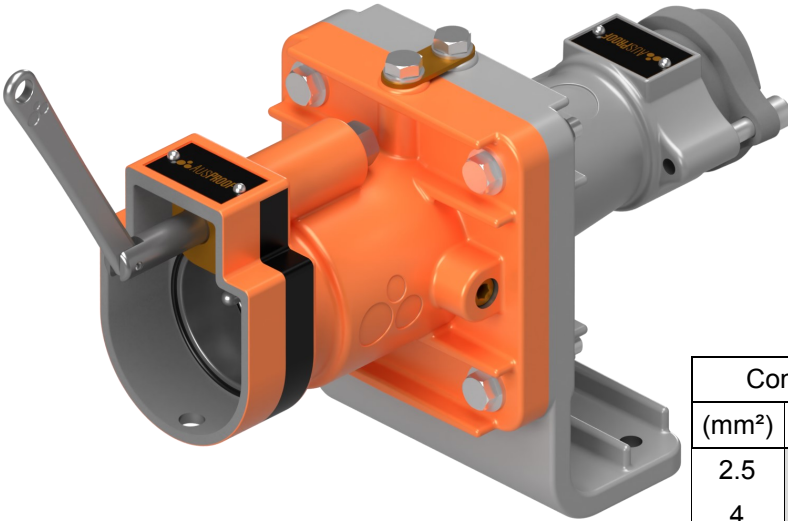


FR 660V 60A (90A) Receptacle Gland Bracket (Non-Ex)

3 Phase 1 Pilot

Built To Suit Cable Type

TYPE: GB664
(Not for Purchasing Use)



Complete Receptacle Gland Bracket To Suit Cable Type						
(mm ²)	*Ref.	241.1	*Ref.	2S	*Ref.	5 Core
2.5	-	-	(C)	RS2284FR	(C)	RS2289FR
4	-	-	-	-	(D)	RS2290FR
6	(G)	RS2280FR	(D)	RS2285FR	(E)	RS2291FR
10	(H)	RS2281FR	(D)	RS2286FR	(F)	RS2292FR
16	(I)	RS2282FR	(F)	RS2287FR	-	-
25	(J)	RS2283FR	(G)	RS2288FR	-	-

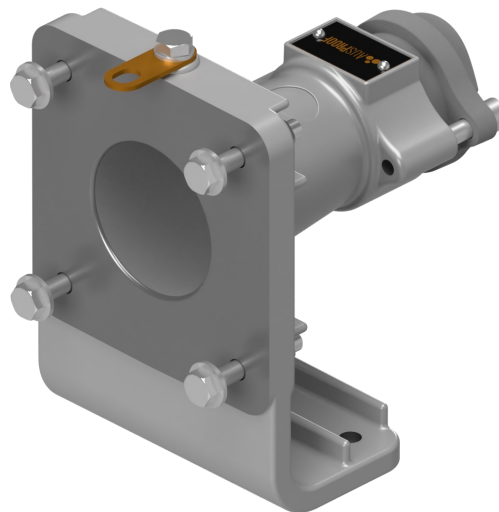
*Gland Reference Letter

Part Breakdown For Customized Cables; One Of Each Type Required

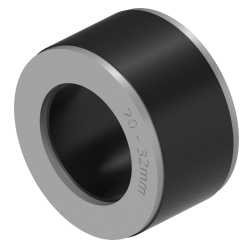
1 660V 90A PES FR Receptacle
Stock No: Refer to Page 12



2 PES Gland Bracket Body Kit
Stock No: RS2259



3

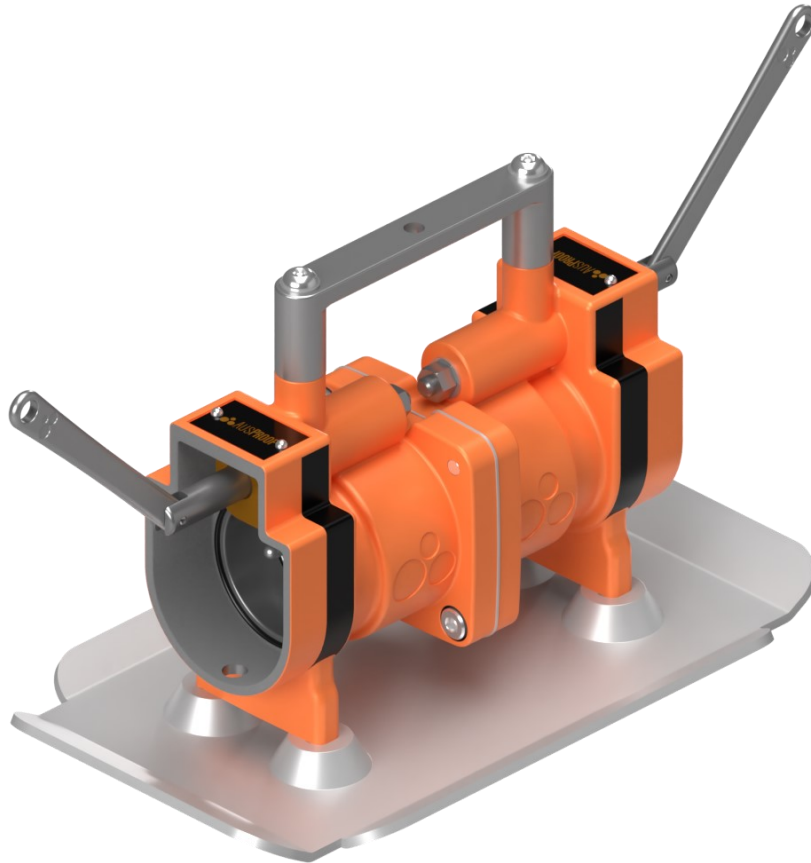


Compression Gland		
*Ref.	Gland ID	Stock No.
(A)	10-14	RS2239
(B)	14-17	RS2240
(C)	17-20	RS2241
(D)	20-23	RS2242
(E)	23-26	RS2243
(F)	26-29	RS2244
(G)	29-32	RS2245
(H)	32-35	RS2246
(I)	35-38	RS2247
(J)	38-41	RS2248

*Gland Reference Letter

FR 660V 60A (90A) Back To Back (Non-Ex)

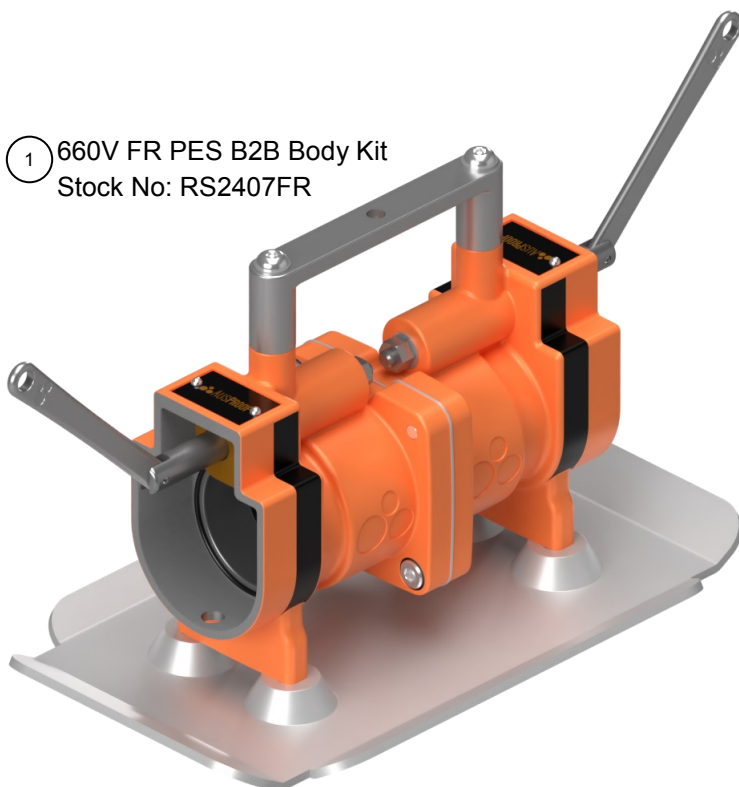
3 Phase 1 Pilot



TYPE: BB664
(Not for Purchasing Use)

Complete Back to Back
Stock No: RS2456FR

Part Breakdown For Repairs; One Of Each Type Required



① 660V FR PES B2B Body Kit
Stock No: RS2407FR

② PES B2B Contact/Insulator Set
Stock No: RS2450



③ PES B2B Cage Kit
Stock No: RS2435

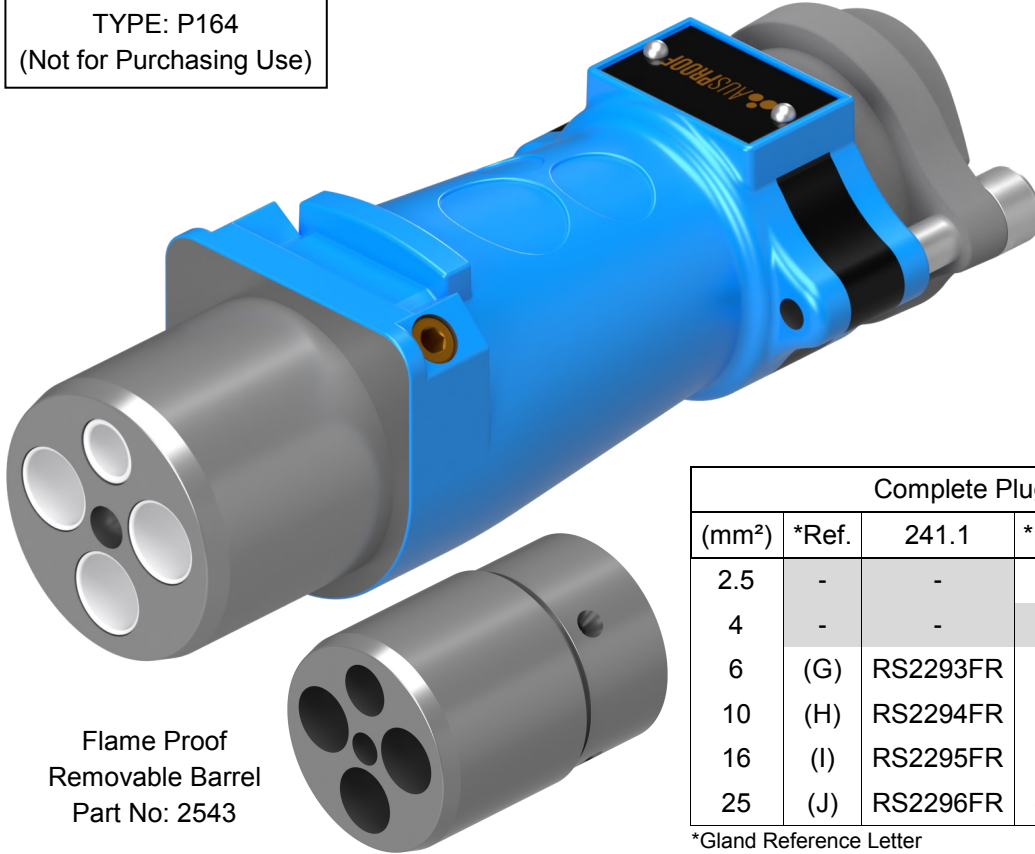




Pilot Orientation

Pre-Built To Suit Cable Type

TYPE: P164
(Not for Purchasing Use)

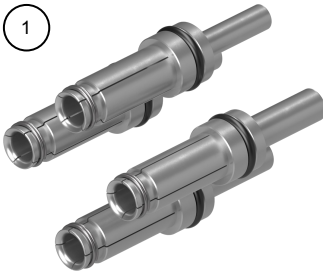


Flame Proof
Removable Barrel
Part No: 2543

Complete Plug To Suit Cable Type						
(mm ²)	*Ref.	241.1	*Ref.	2S	*Ref.	5 Core
2.5	-	-	(C)	RS2297FR	(C)	RS2302FR
4	-	-	-	-	(D)	RS2303FR
6	(G)	RS2293FR	(D)	RS2298FR	(E)	RS2304FR
10	(H)	RS2294FR	(D)	RS2299FR	(F)	RS2305FR
16	(I)	RS2295FR	(F)	RS2300FR	-	-
25	(J)	RS2296FR	(G)	RS2301FR	-	-

*Gland Reference Letter

Part Breakdown For Customized Cables; One Of Each Type Required



6 / 20 Style Tube Contact Sets		
(mm ²)	ID (mm)	Stock No.
2.5	2.4	RS2233
4	3.1	RS2234
6	3.8	RS2235
10	4.7	RS2236
16	6.5	RS2237
25	7.5	RS2238

2 PES Barrel
Stock No: RS2232



Compression Gland		
*Ref.	Gland ID	Stock No.
(A)	10-14	RS2239
(B)	14-17	RS2240
(C)	17-20	RS2241
(D)	20-23	RS2242
(E)	23-26	RS2243
(F)	26-29	RS2244
(G)	29-32	RS2245
(H)	32-35	RS2246
(I)	35-38	RS2247
(J)	38-41	RS2248



3 1100V FR PES Plug Body
Stock No: RS2257FR

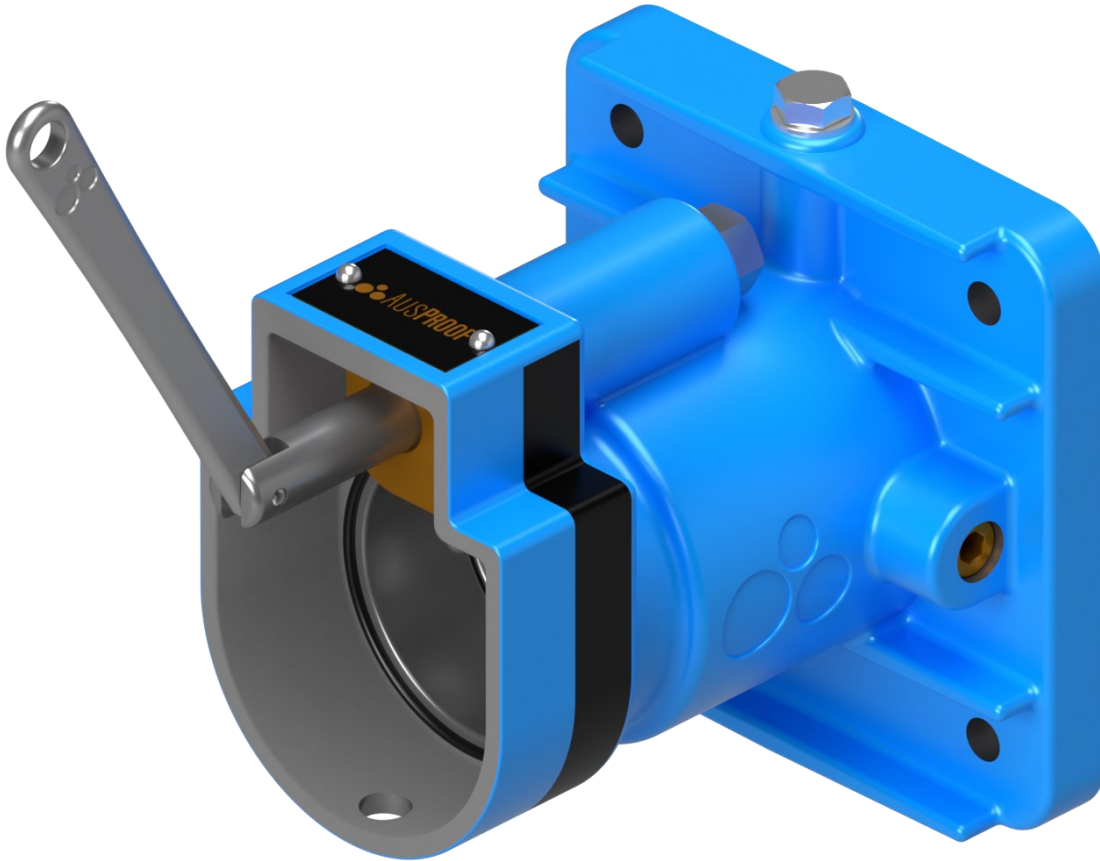
*Gland Reference Letter

FR 1100V 60A (90A) PES Receptacle (Non-Ex)

3 Phase 1 Pilot



Pilot Orientation

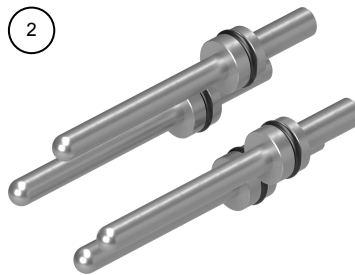


TYPE: R164
(Not for Purchasing Use)

Complete Receptacle to Suit mm ² Cable	
(mm ²)	(Jack In) Stock No.
2.5	RS2306FR
4	RS2307FR
6	RS2308FR
10	RS2309FR
16	RS2310FR
25	RS2311FR

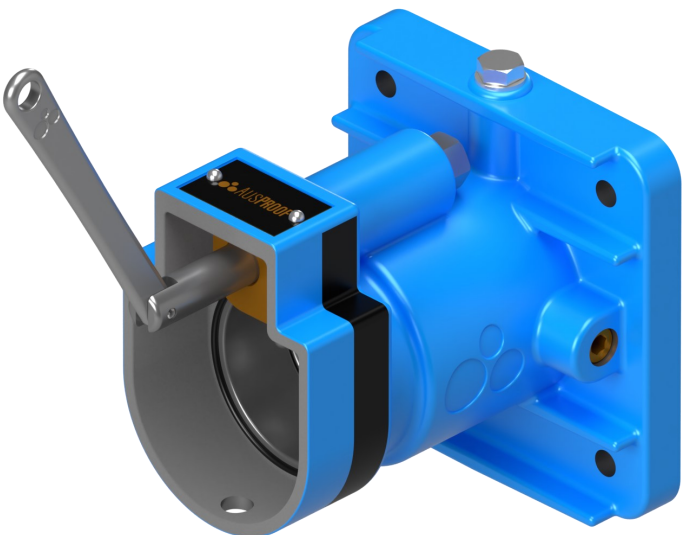
Part Breakdown For Customized Cables; One Of Each Type Required

1 1100V FR PES Receptacle Body
Stock No: RS2258FR



6 / 54 Style Pins Contact Sets		
(mm ²)	ID (mm)	Stock No.
2.5	2.4	RS2251
4	3.1	RS2252
6	3.8	RS2253
10	4.7	RS2254
16	6.5	RS2255
25	7.5	RS2256

3 PES Receptacle Cage
Stock No: RS2250

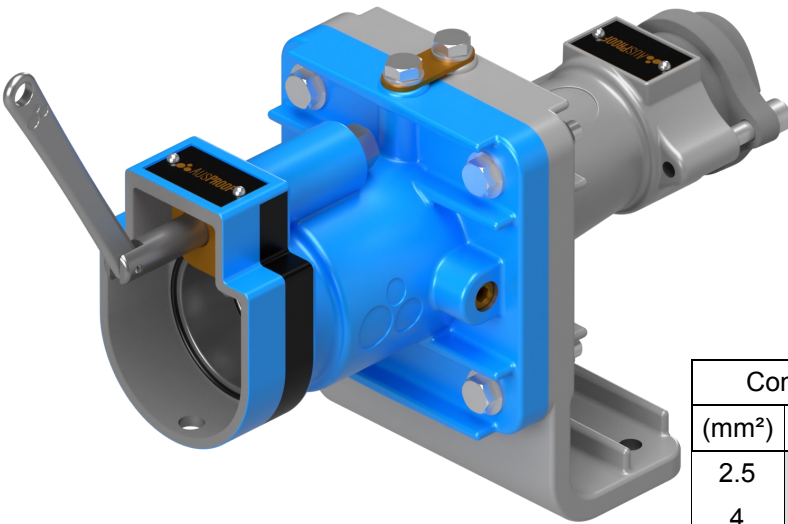


FR 1100V 60A (90A) Receptacle Gland Bracket (Non-Ex)

3 Phase 1 Pilot

Built To Suit Cable Type

TYPE: GB164
(Not for Purchasing Use)

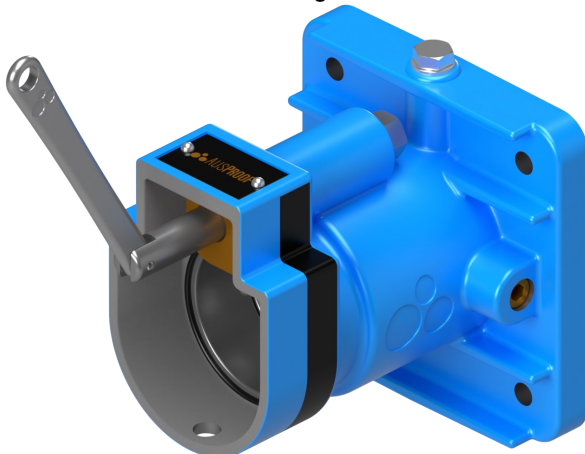


Complete Receptacle Gland Bracket To Suit Cable Type						
(mm ²)	*Ref.	241.1	*Ref.	2S	*Ref.	5 Core
2.5	-	-	(C)	RS2316FR	(C)	RS2321FR
4	-	-	-	-	(D)	RS2322FR
6	(G)	RS2312FR	(D)	RS2317FR	(E)	RS2323FR
10	(H)	RS2313FR	(D)	RS2318FR	(F)	RS2324FR
16	(I)	RS2314FR	(F)	RS2319FR	-	-
25	(J)	RS2315FR	(G)	RS2320FR	-	-

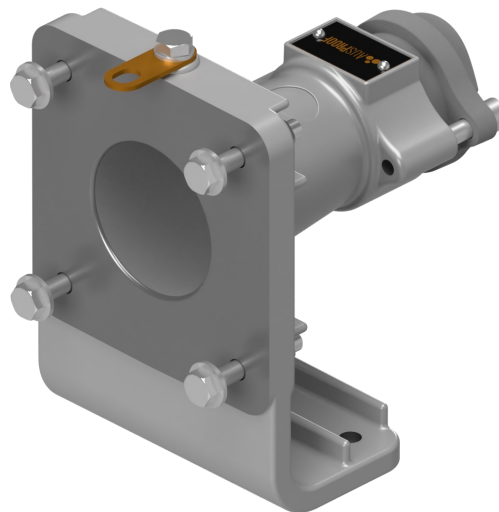
*Gland Reference Letter

Part Breakdown For Customized Cables; One Of Each Type Required

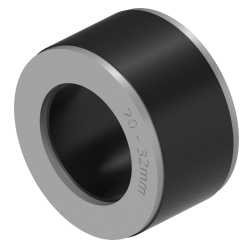
1 1100V 90A PES FR Receptacle
Stock No: Refer to Page 16



2 PES Gland Bracket Body Kit
Stock No: RS2259



3

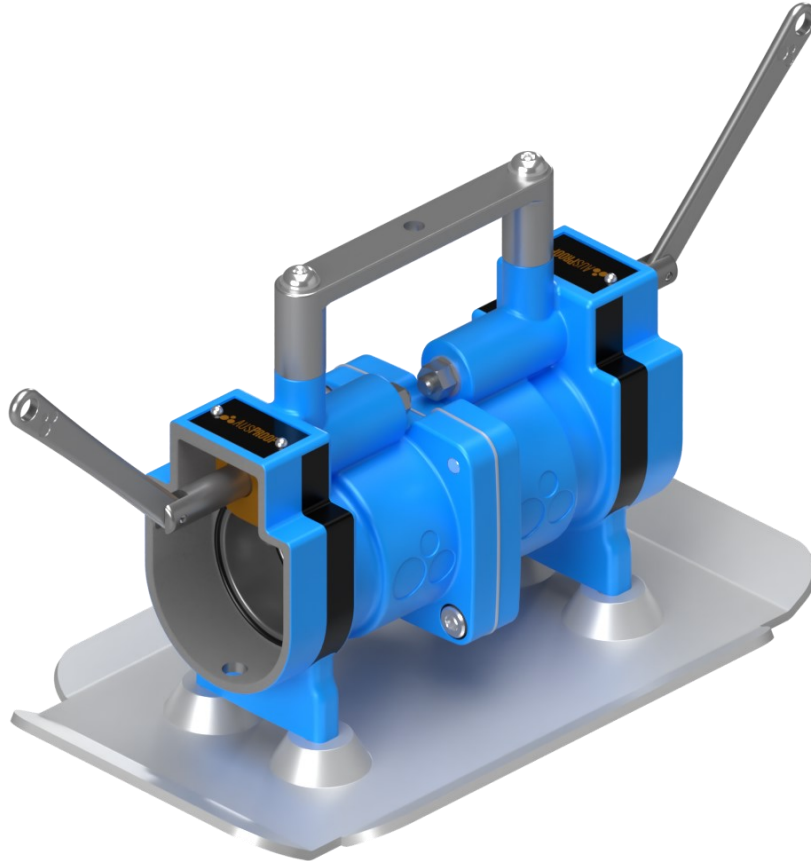


Compression Gland		
*Ref.	Gland ID	Stock No.
(A)	10-14	RS2239
(B)	14-17	RS2240
(C)	17-20	RS2241
(D)	20-23	RS2242
(E)	23-26	RS2243
(F)	26-29	RS2244
(G)	29-32	RS2245
(H)	32-35	RS2246
(I)	35-38	RS2247
(J)	38-41	RS2248

*Gland Reference Letter

FR 1100V 60A (90A) Back To Back (Non-Ex)

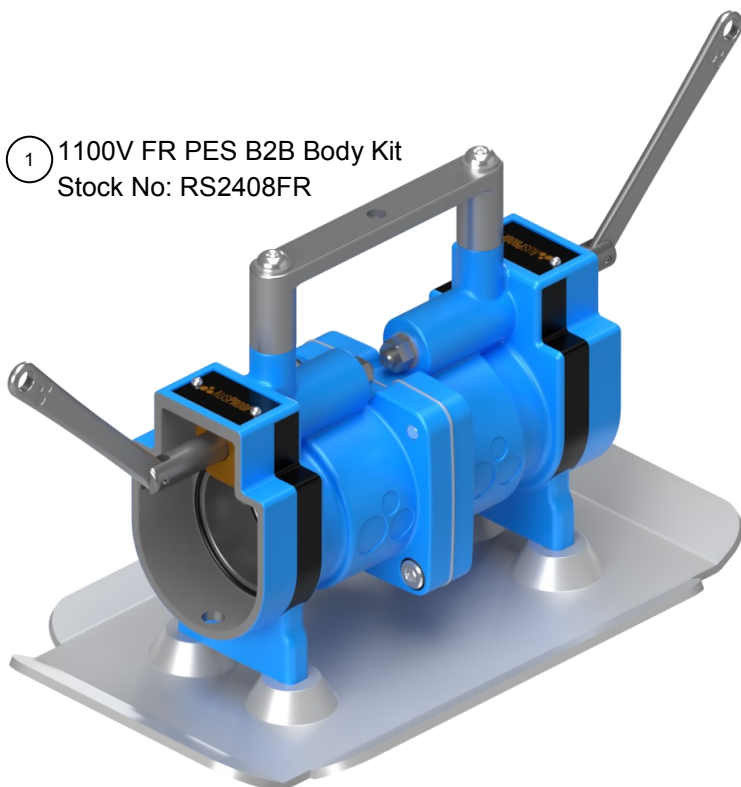
3 Phase 1 Pilot



TYPE: BB164
(Not for Purchasing Use)

Complete Back to Back
Stock No: RS2458FR

Part Breakdown For Repairs; One Of Each Type Required



① 1100V FR PES B2B Body Kit
Stock No: RS2408FR



② PES B2B Contact/Insulator Set
Stock No: RS2450

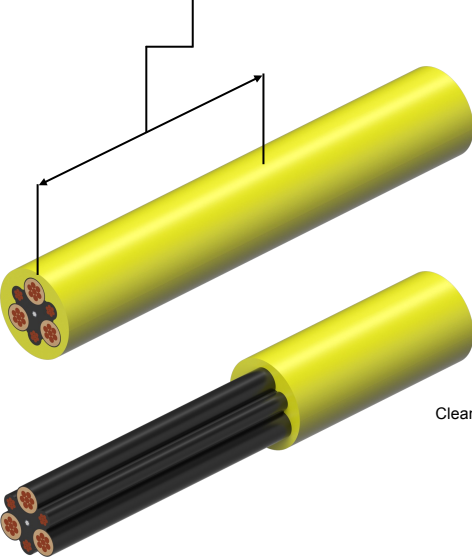


③ PES B2B Cage Kit
Stock No: RS2435

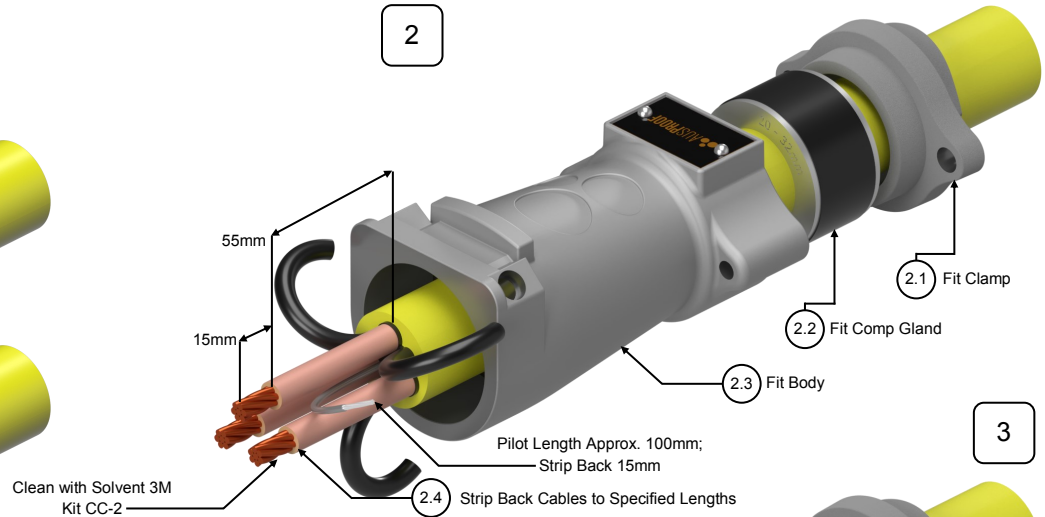


Pilot Orientation

1 Remove Outer Sheath 100mm

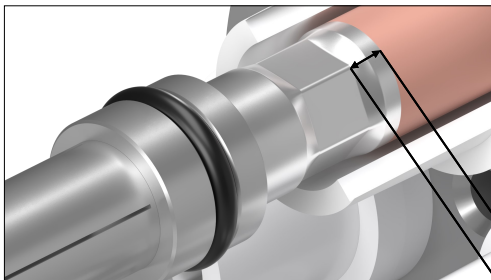


2

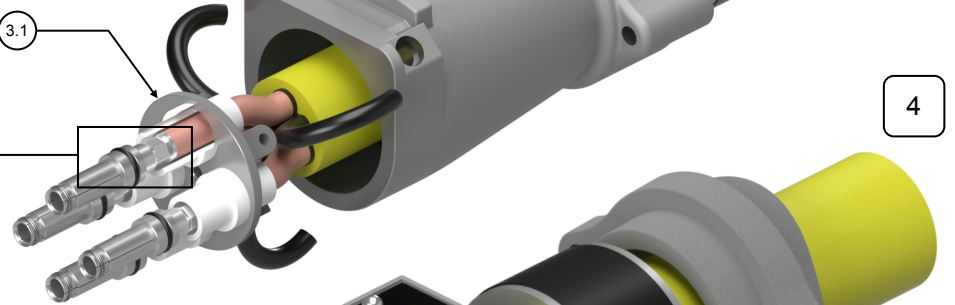


3

Fit Retaining Ring + Insulator Bushes Before Termination of Contacts

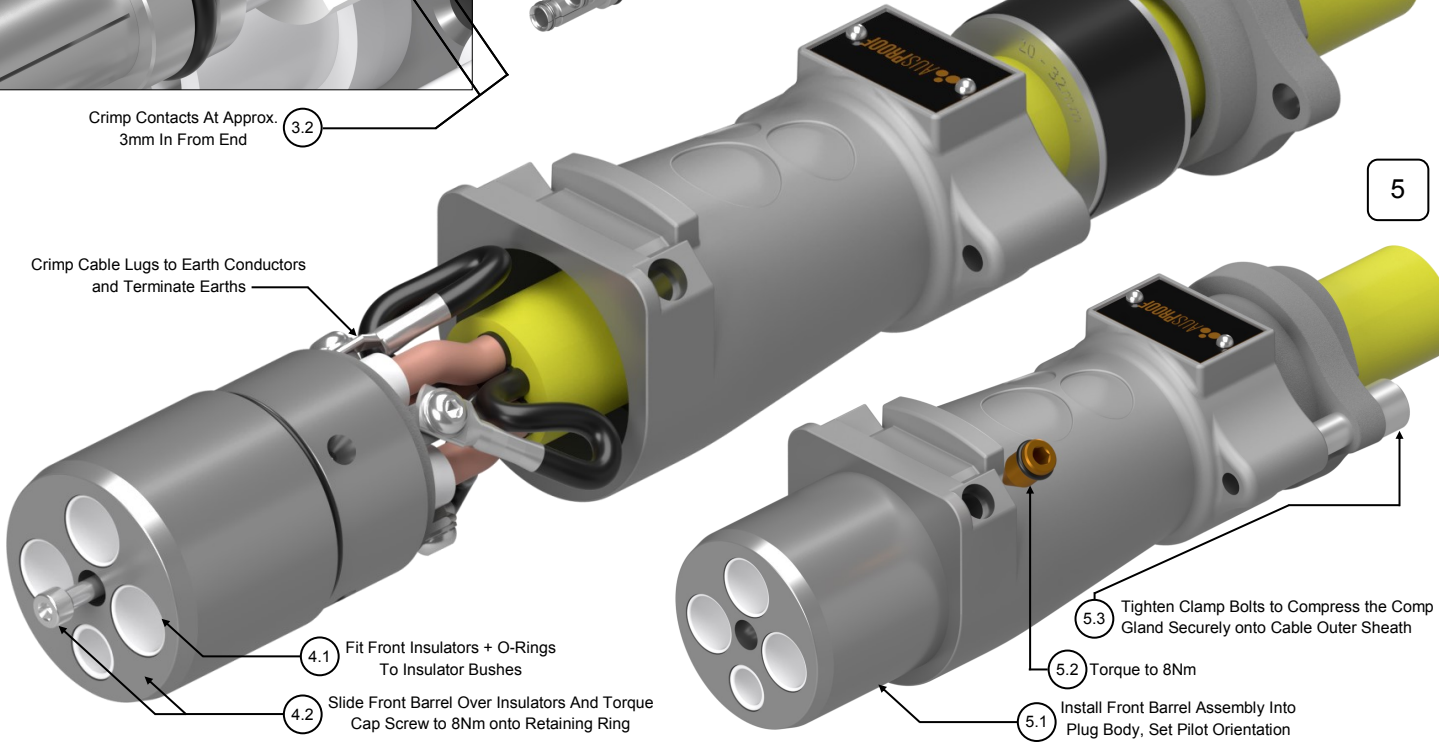


Crimp Contacts At Approx. 3mm In From End



4

Crimp Cable Lugs to Earth Conductors and Terminate Earths

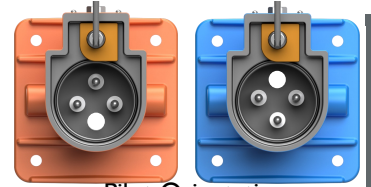


5

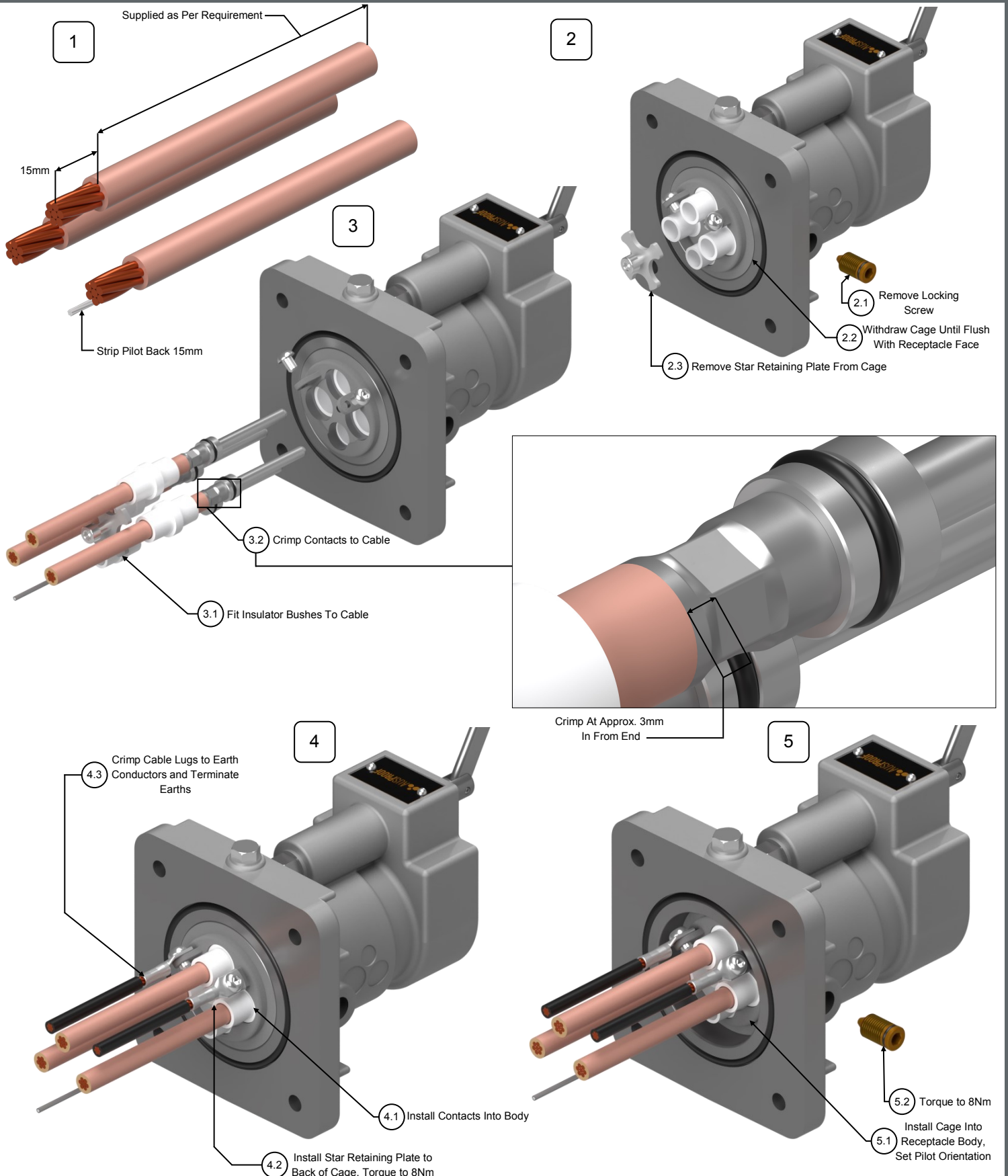
Termination Procedure



660V/1100V 60A/90A Receptacle; 3 Phase + 1 Pilot



Pilot Orientation

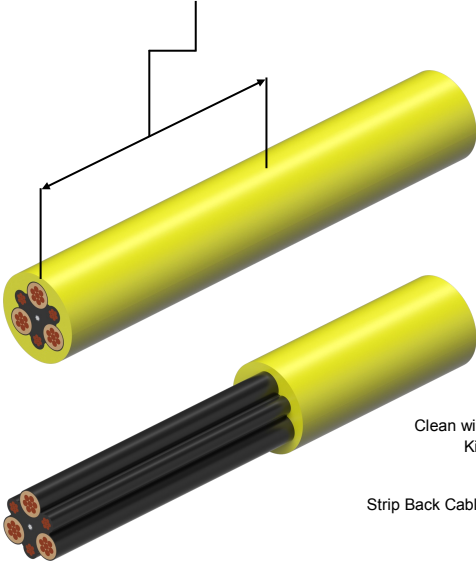


Termination Procedure

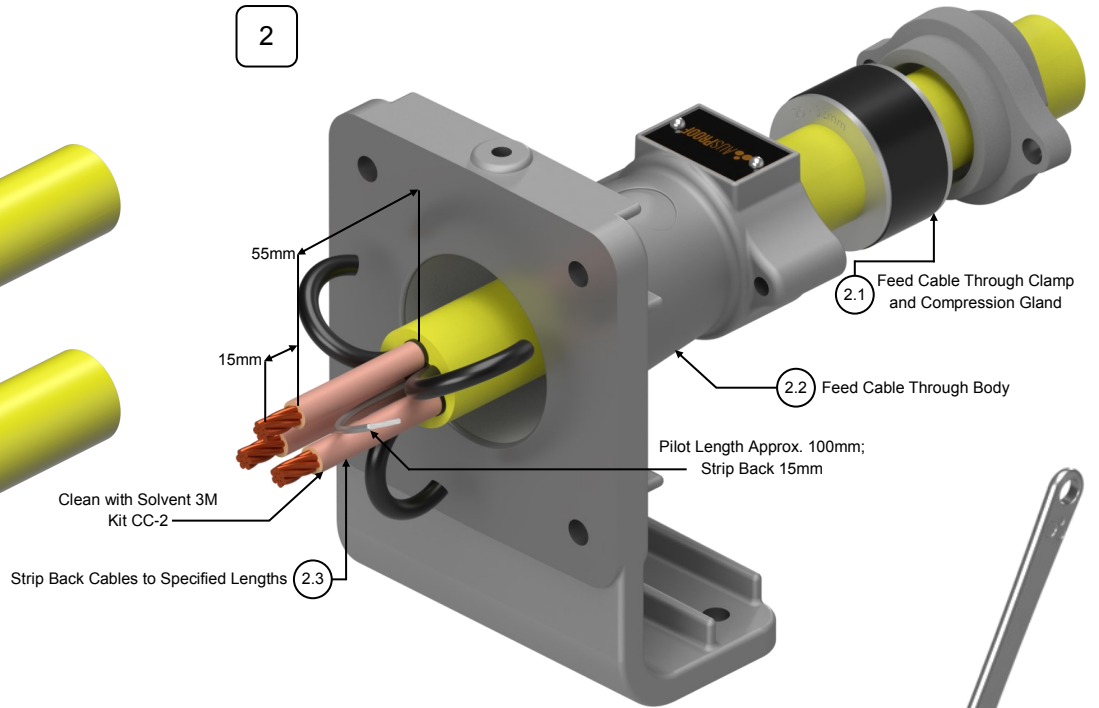


660V/1100V 60A/90A Receptacle Gland Bracket; 3 Phase + 1 Pilot

1 Remove Outer Sheath 100mm

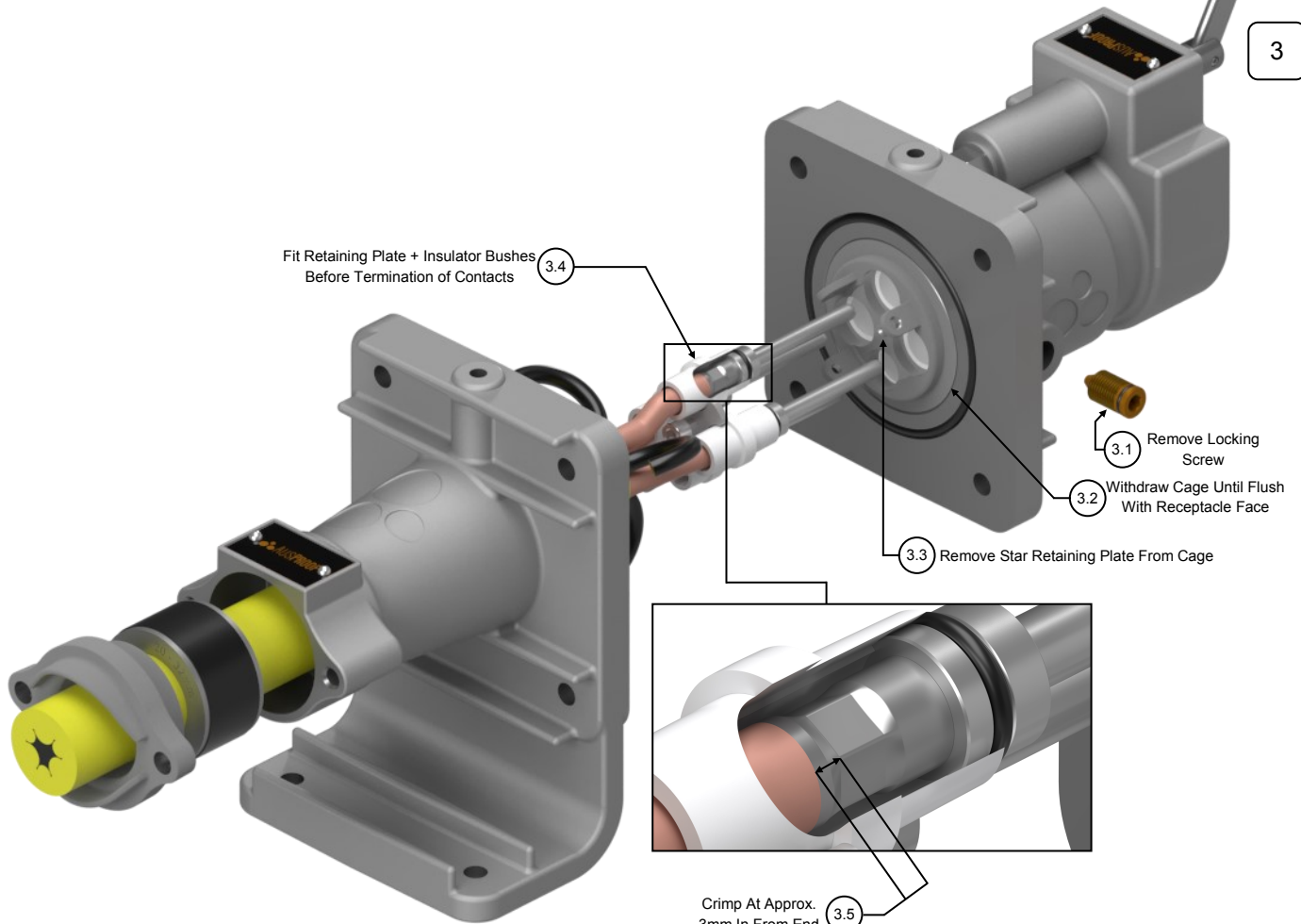


2



3

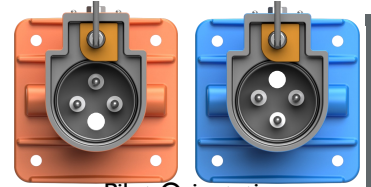
Fit Retaining Plate + Insulator Bushes Before Termination of Contacts 3.4



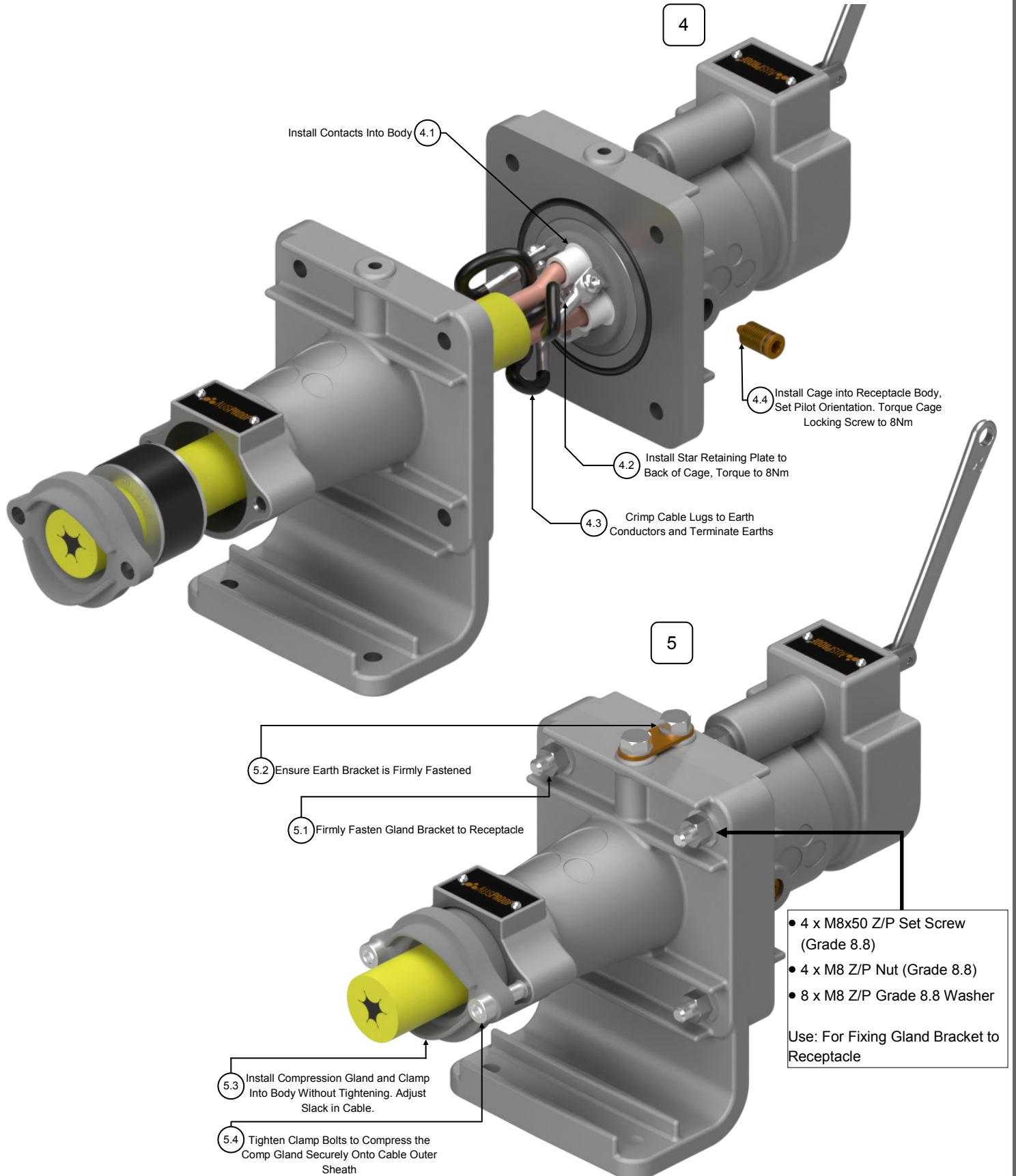
Termination Procedure



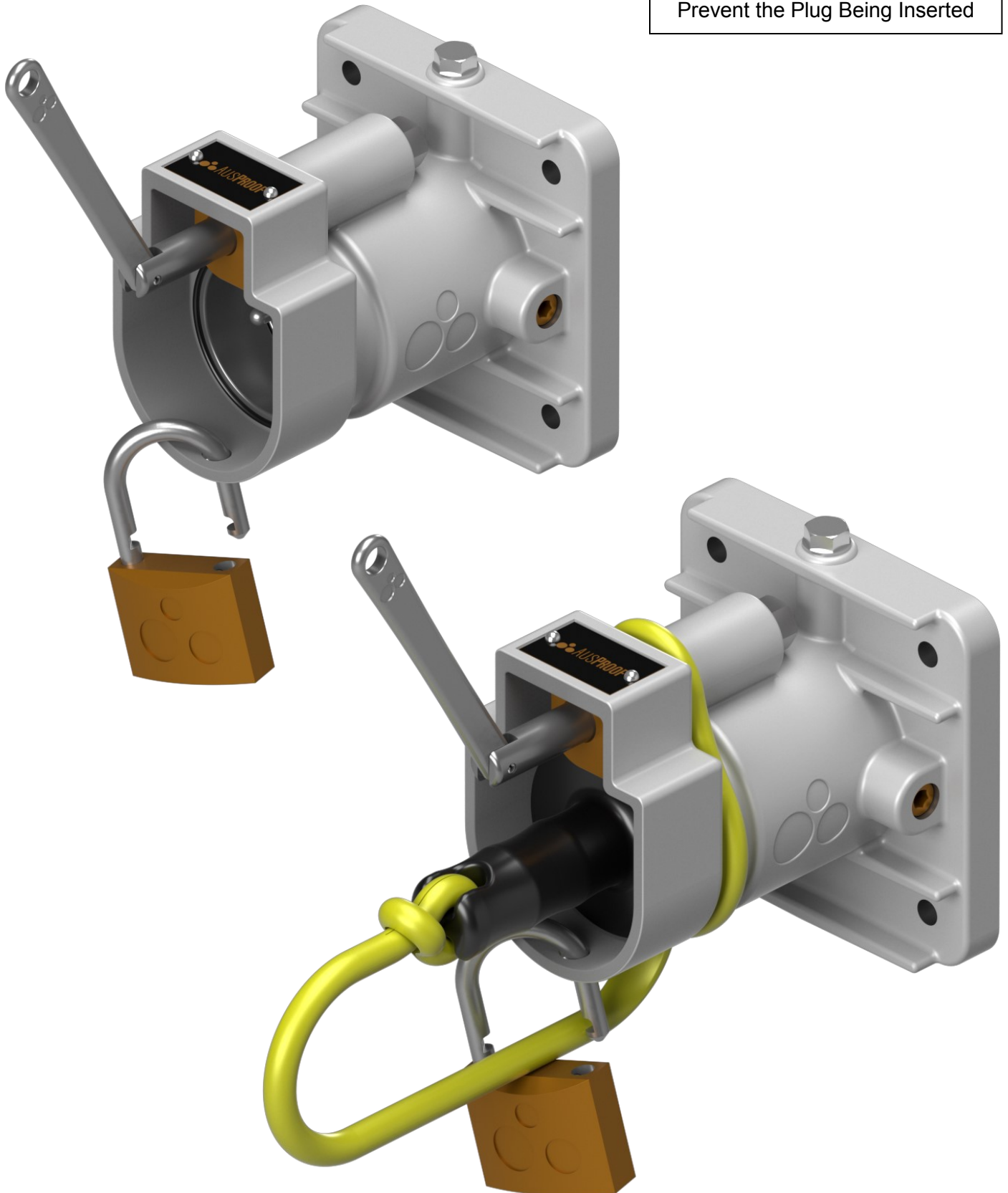
660V/1100V 60A/90A Receptacle Gland Bracket; 3 Phase + 1 Pilot



Pilot Orientation

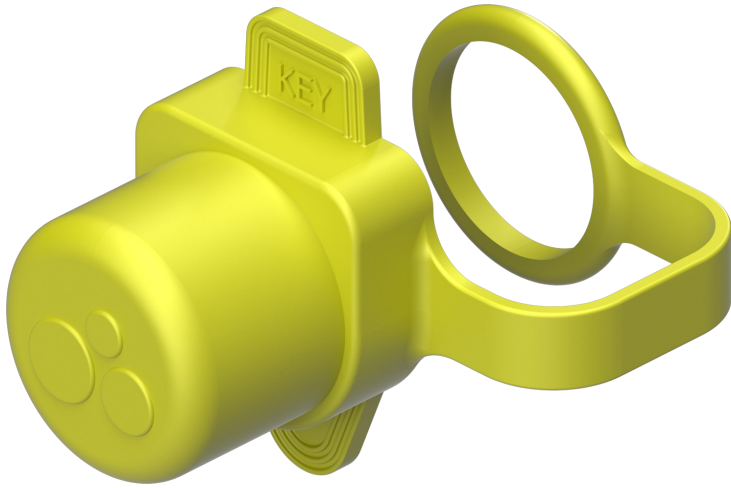


A Lockout Device May Be Fitted To Prevent the Plug Being Inserted

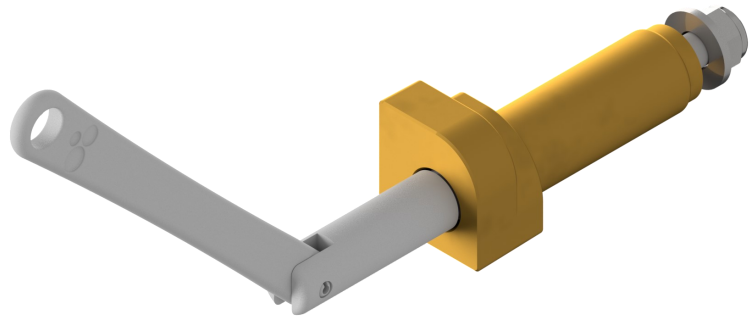


Accessories

PES Plug and Receptacles



60A/90A
Plug Cover
Part No: 3208



PES Pawl Screw Jack in
Full Assembly
Stock No: RS1187



60A/90A
Receptacle Protective Bung
Stock No: RS1855

Alternative Gland Mounting
Added O-Ring
Not To Be Mounted To Receptacles
Due To O-Ring Fitting



Stock No: RS2260

TYPE: GMPES
(Not for Purchasing Use)

Accessories

OIF (O-Ring, Insulators and Fasteners) Repair Kits for Plugs and Receptacles

OIF Repair Kits for Plugs	
660V 60A 4 Pin PES Plug, Contact and Insulator SET Style 6/20	Stock Number
2.5 - 25mm	RS3339
1100V 60A 4 Pin PES Plug, Contact and Insulator SET Style 6/20	Stock Number
2.5 - 25mm	RS3339
660V 60A 4 Pin PES Plug, Contact and Insulator SET Style 6/20	Stock Number
2.5 - 25mm	RS3339
1100V 60A 4 Pin PES Plug, Contact and Insulator SET Style 6/20	Stock Number
2.5 - 25mm	RS3339

OIF Barrel Repair Kit for Plug	Stock Number
4 Pin Barrel (RS2232)	RS2477

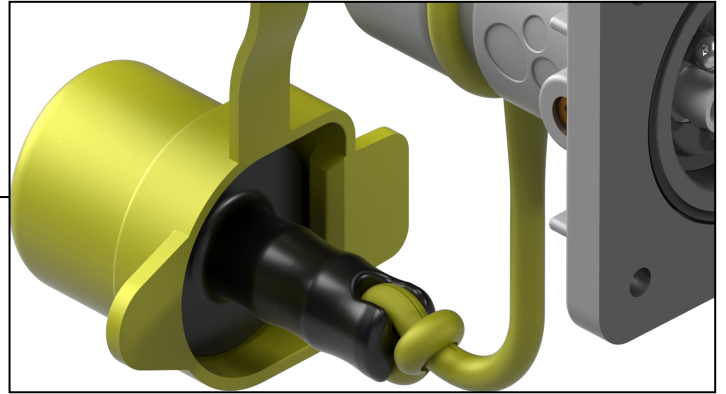
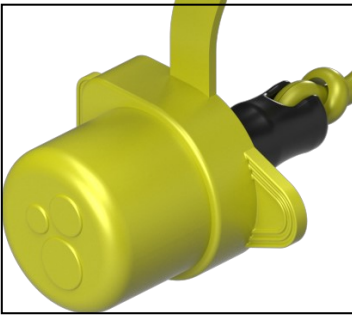
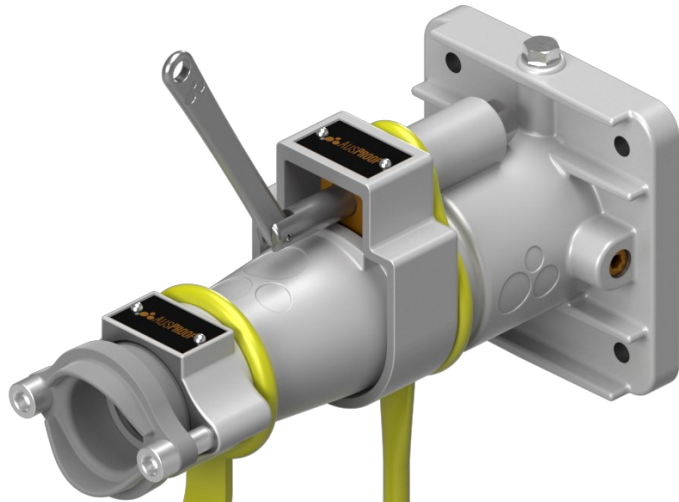


OIF Repair Kits for Receptacles	
660V 60A 4 Pin PES Receptacle, Contact and Insulator SET Style 6/54	Stock Number
2.5 - 25mm	RS3340
1100V 60A 4 Pin PES Receptacle, Contact and Insulator SET Style 6/54	Stock Number
2.5 - 25mm	RS3340
660V 60A 4 Pin PES Receptacle, Contact and Insulator SET Style 6/54	Stock Number
2.5 - 25mm	RS3340
1100V 60A 4 Pin PES Receptacle, Contact and Insulator SET Style 6/54	Stock Number
2.5 - 25mm	RS3340

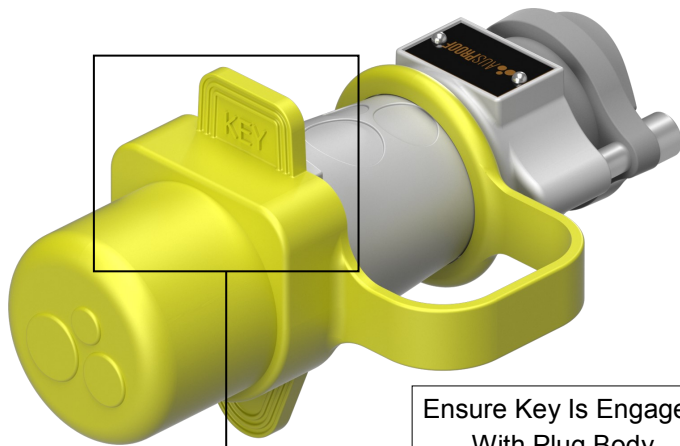
OIF Cage Repair Kit for Receptacle	Stock Number
4 Pin Receptacle Cage (RS2250)	RS2478

PES Range Product Handling

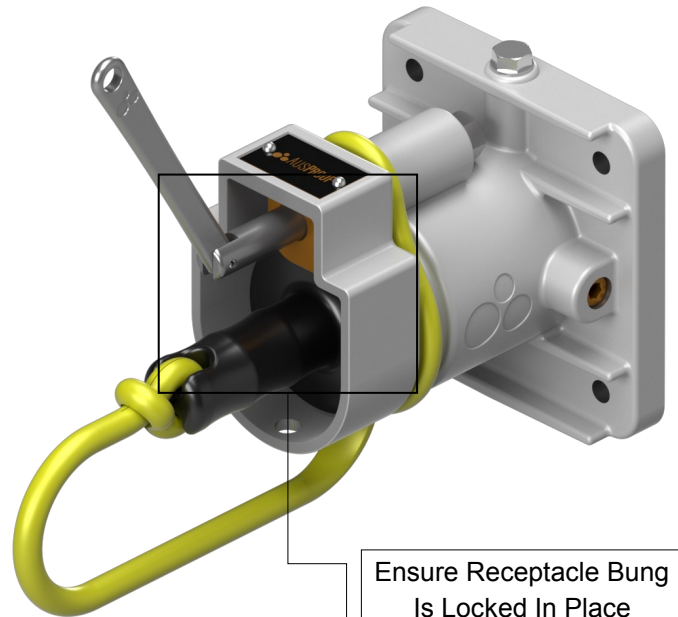
660V/1100V 60A/90A PES Plug And Receptacle



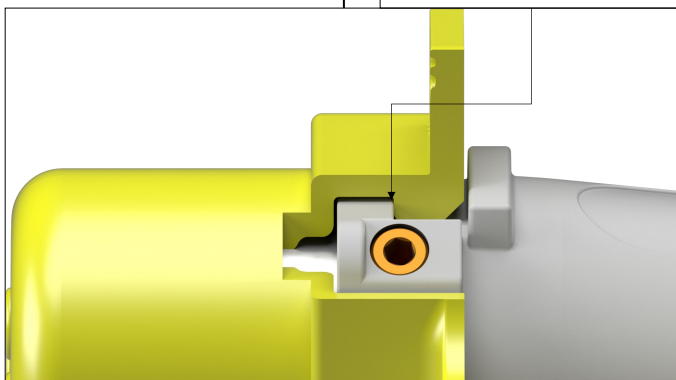
When Not In Use, Insert Receptacle Bung Into Silicone Plug Cover. Ensure Bung is Inserted Past the Rubber Key.



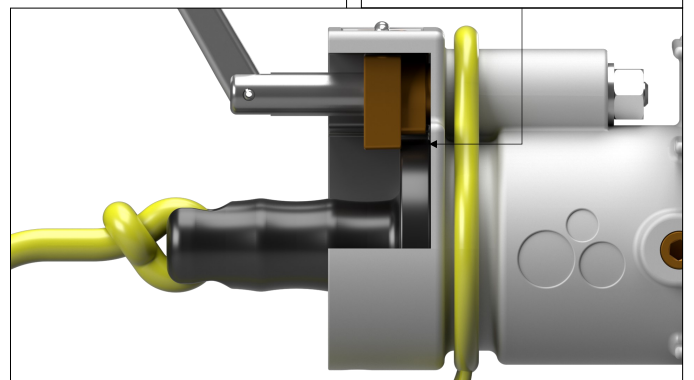
Ensure Key Is Engaged With Plug Body



Ensure Receptacle Bung Is Locked In Place With Pawl



Plug Key Engagement



Receptacle Key Engagement

Glossary

Part No	Description
3208	PES Silicone Plug Cover
RS1855	PES RECEP Black Protective Bung
RS2231	PES 660V 60A 4 Pin Plug Orange Body KIT
RS2231FR	PES FR 660V 90A 4 Pin Plug Orange Body KIT
RS2232	PES Plug Cage KIT 2.5-25mm ²
RS2239	PES Comp Ring Kit 10 - 14 mm
RS2240	PES Comp Ring Kit 14 - 17 mm
RS2241	PES Comp Ring Kit 17 - 20 mm
RS2242	PES Comp Ring Kit 20 - 23 mm
RS2243	PES Comp Ring Kit 23 - 26 mm
RS2244	PES Comp Ring Kit 26 - 29 mm
RS2245	PES Comp Ring Kit 29 - 32 mm
RS2246	PES Comp Ring Kit 32 - 35 mm
RS2247	PES Comp Ring Kit 35 - 38 mm
RS2248	PES Comp Ring Kit 38 - 41 mm
RS2249	PES 660V 60A 4P RECEP Orange Body KIT
RS2249FR	PES FR 660V 90A 4P RECEP Orange Body KIT
RS2250	PES 4 Pin RECEP Cage KIT 2.5-25mm ²
RS2257	PES 1100V 60A 4P Plug Blue Kit
RS2257FR	PES FR 1100V 90A 4P Plug Blue Kit
RS2258	PES 1100V 60A 4P RECEP Blue Body Kit
RS2258FR	PES FR 1100V 90A 4P RECEP Blue Body Kit
RS2259	PES RGB RECEP Gland Bracket Body Kit
RS2260	PES RGM RECEP Gland Mounting Body Kit
RS2261	PES 660V 60A 4P Plug (270) 6-C 29-32-G (241.1)
RS2261FR	PES FR 660V 90A Plug (270) 6-C 29-32-G (241.1)
RS2262	PES 660V 60A 4P Plug (270) 10-C 32-35-G (241.1)
RS2262FR	PES FR 660V 90A Plug (270) 10-C 32-35-G (241.1)
RS2263	PES 660V 60A 4P Plug (270) 16-C 35-38-G (241.1)
RS2263FR	PES FR 660V 90A 4P Plug (270) 16-C 35-38-G (241.1)
RS2264	PES 660V 60A 4P Plug (270) 25-C 38-41-G (241.1)
RS2264FR	PES FR 660V 90A Plug (270) 25-C 38-41-G (241.1)
RS2265	PES 660V 60A 4P Plug (270) 2.5-C 17-20-G (2S)
RS2265FR	PES FR 660V 90A Plug (270) 2.5-C 17-20-G (2S)
RS2266	PES 660V 60A 4P Plug (270) 6-C 20-23-G (2S)
RS2266FR	PES FR 660V 90A Plug (270) 6-C 20-23-G (2S)
RS2267	PES 660V 60A 4P Plug (270) 10-C 20-23-G (2S)
RS2267FR	PES FR 660V 90A Plug (270) 10-C 20-23-G (2S)
RS2268	PES 660V 60A 4P Plug (270) 16-C 26-29-G (2S)
RS2268FR	PES FR 660V 90A Plug (270) 16-C 26-29-G (2S)
RS2269	PES 660V 60A 4P Plug (270) 25-C 29-32-G (2S)
RS2269FR	PES FR 660V 90A Plug (270) 25-C 29-32-G (2S)
RS2270	PES 660V 60A 4P Plug (270) 2.5-C 17-20-G (5 Core)

Part No	Description
RS2270FR	PES FR 660V 90A 4P Plug (270) 2.5-C 17-20-G (5 Core)
RS2271	PES 660V 60A 4P Plug (270) 4-C 20-23-G (5 Core)
RS2271FR	PES FR 660V 90A 4P Plug (270) 4-C 20-23-G (5 Core)
RS2272	PES 660V 60A 4P Plug (270) 6-C 23-26-G (5 Core)
RS2272FR	PES FR 660V 90A 4P Plug (270) 6-C 23-26-G (5 Core)
RS2273	PES 660V 60A 4P Plug (270) 10-C 26-29-G (5 Core)
RS2273FR	PES FR 660V 90A 4P Plug (270) 10-C 26-29-G (5 Core)
RS2274	PES 660V 60A 4P Receptacle (270) 2.5-C
RS2274FR	PES FR 660V 90A Receptacle (270) 2.5-C
RS2275	PES 660V 60A 4P Receptacle (270) 4-C
RS2275FR	PES FR 660V 90A Receptacle (270) 4-C
RS2276	PES 660V 60A 4P Receptacle (270) 6-C
RS2276FR	PES FR 660V 90A Receptacle (270) 6-C
RS2277	PES 660V 60A 4P Receptacle (270) 10-C
RS2277FR	PES FR 660V 90A Receptacle (270) 10-C
RS2278	PES 660V 60A 4P Receptacle (270) 16-C
RS2278FR	PES FR 660V 90A Receptacle (270) 16-C
RS2279	PES 660V 60A 4P Receptacle (270) 25-C
RS2279FR	PES FR 660V 90A Receptacle (270) 25-C
RS2280	PES 660V 60A 4P Gland Bracket (270) 6-C 29-32-G (241.1)
RS2280FR	PES FR 660V 90A 4P Gland Bracket (270) 6-C 29-32-G (241.1)
RS2281	PES 660V 60A 4P Gland Bracket (270) 10-C 32-35-G (241.1)
RS2281FR	PES FR 660V 90A 4P Gland Bracket (270) 10-C 32-35-G (241.1)
RS2282	PES 660V 60A 4P Gland Bracket (270) 16-C 35-38-G (241.1)
RS2282FR	PES FR 660V 90A 4P Gland Bracket (270) 16-C 35-38-G (241.1)
RS2283	PES 660V 60A 4P Gland Bracket (270) 25-C 38-41-G (241.1)
RS2283FR	PES FR 660V 90A 4P Gland Bracket (270) 25-C 38-41-G (241.1)
RS2284	PES 660V 60A 4P Gland Bracket (270) 2.5-C 17-20-G (2S)
RS2284FR	PES FR 660V 90A 4P Gland Bracket (270) 2.5-C 17-20-G (2S)
RS2285	PES 660V 60A 4P Gland Bracket (270) 6-C 20-23-G (2S)
RS2285FR	PES FR 660V 90A 4P Gland Bracket (270) 6-C 20-23-G (2S)
RS2286	PES 660V 60A 4P Gland Bracket (270) 10-C 20-23-G (2S)
RS2286FR	PES FR 660V 90A 4P Gland Bracket (270) 10-C 20-23-G (2S)
RS2287	PES 660V 60A 4P Gland Bracket (270) 16-C 26-29-G (2S)
RS2287FR	PES FR 660V 90A 4P Gland Bracket (270) 16-C 26-29-G (2S)
RS2288	PES 660V 60A 4P Gland Bracket (270) 25-C 29-32-G (2S)
RS2288FR	PES FR 660V 90A 4P Gland Bracket (270) 25-C 29-32-G (2S)
RS2289	PES 660V 60A 4P Gland Bracket (270) 2.5-C 17-20-G (5 Core)
RS2289FR	PES FR 660V 90A 4P Gland Bracket (270) 2.5-C 17-20-G (5 Core)
RS2290	PES 660V 60A 4P Gland Bracket (270) 4-C 20-23-G (5 Core)
RS2290FR	PES FR 660V 90A 4P Gland Bracket (270) 4-C 20-23-G (5 Core)
RS2291	PES 660V 60A 4P Gland Bracket (270) 6-C 23-26-G (5 Core)
RS2291FR	PES FR 660V 90A 4P Gland Bracket (270) 6-C 23-26-G (5 Core)

Glossary

Part No	Description
RS2292	PES 660V 60A 4P Gland Bracket (270) 10-C 26-29-G (5 Core)
RS2292FR	PES FR 660V 90A 4P Gland Bracket (270) 10-C 26-29-G (5 Core)
RS2293	PES 1100V 60A 4P Plug (90) 6-C 29-32-G (241.1)
RS2293FR	PES FR 1100V 90A 4P Plug (90) 6-C 29-32-G (241.1)
RS2294	PES 1100V 60A Plug (90) 10-C 32-35-G (241.1)
RS2294FR	PES FR 1100V 90A 4P Plug (90) 10-C 32-35-G (241.1)
RS2295	PES 1100V 60A 4P Plug (90) 16-C 35-38-G (241.1)
RS2295FR	PES FR 1100V 90A 4P Plug (90) 16-C 35-38-G (241.1)
RS2296	PES 1100V 60A 4P Plug (90) 25-C 38-41-G (241.1)
RS2296FR	PES FR 1100V 90A Plug (90) 25-C 38-41-G (241.1)
RS2297	PES 1100V 60A 4P Plug (90) 2.5-C 17-20-G (2S)
RS2297FR	PES FR 1100V 90A Plug (90) 2.5-C 17-20-G (2S)
RS2298	PES 1100V 60A 4P Plug (90) 6-C 20-23-G (2S)
RS2298FR	PES FR 1100V 90A Plug (90) 6-C 20-23-G (2S)
RS2299	PES 1100V 60A 4P Plug (90) 10-C 20-23-G (2S)
RS2299FR	PES FR 1100V 90A Plug (90) 10-C 20-23-G (2S)
RS2300	PES 1100V 60A 4P Plug (90) 16-C 26-29-G (2S)
RS2300FR	PES FR 1100V 90A Plug (90) 16-C 26-29-G (2S)
RS2301	PES 1100V 60A 4P Plug (90) 25-C 29-32-G (2S)
RS2301FR	PES FR 1100V 90A Plug (90) 25-C 29-32-G (2S)
RS2302	PES 1100V 60A 4P Plug (90) 2.5-C 17-20-G (5 Core)
RS2302FR	PES FR 1100V 90A Plug (90) 2.5-C 17-20-G (5 Core)
RS2303	PES 1100V 60A 4P Plug (90) 4-C 20-23-G (5 Core)
RS2303FR	PES FR 1100V 90A Plug (90) 4-C 20-23-G (5 Core)
RS2304	PES 1100V 60A 4P Plug (90) 6-C 23-26-G (5 Core)
RS2304FR	PES FR 1100V 90A Plug (90) 6-C 23-26-G (5 Core)
RS2305	PES 1100V 60A 4P Plug (90) 10-C 26-29-G (5 Core)
RS2305FR	PES FR 1100V 90A Plug (90) 10-C 26-29-G (5 Core)
RS2306	PES 1100V 60A 4P Receptacle (90) 2.5-C
RS2306FR	PES FR 1100V 90A 4P Receptacle (90) 2.5-C
RS2307	PES 1100V 60A 4P Receptacle (90) 4-C
RS2307FR	PES FR 1100V 90A 4P Receptacle (90) 4-C
RS2308	PES 1100V 60A 4P Receptacle (90) 6-C
RS2308FR	PES FR 1100V 90A 4P Receptacle (90) 6-C
RS2309	PES 1100V 60A 4P Receptacle (90) 10-C
RS2309FR	PES FR 1100V 90A 4P Receptacle (90) 10-C
RS2310	PES 1100V 60A 4P Receptacle (90) 16-C
RS2310FR	PES FR 1100V 90A 4P Receptacle (90) 16-C
RS2311	PES 1100V 60A 4P Receptacle (90) 25-C
RS2311FR	PES FR 1100V 90A 4P Receptacle (90) 25-C
RS2312	PES 1100V 60A 4P Gland Bracket (90) 6-C 29-32-G (241.1)
RS2312FR	PES FR 1100V 90A 4P Gland Bracket (90) 6-C 29-32-G (241.1)
RS2313	PES 1100V 60A 4P Gland Bracket (90) 10-C 32-35-G (241.1)

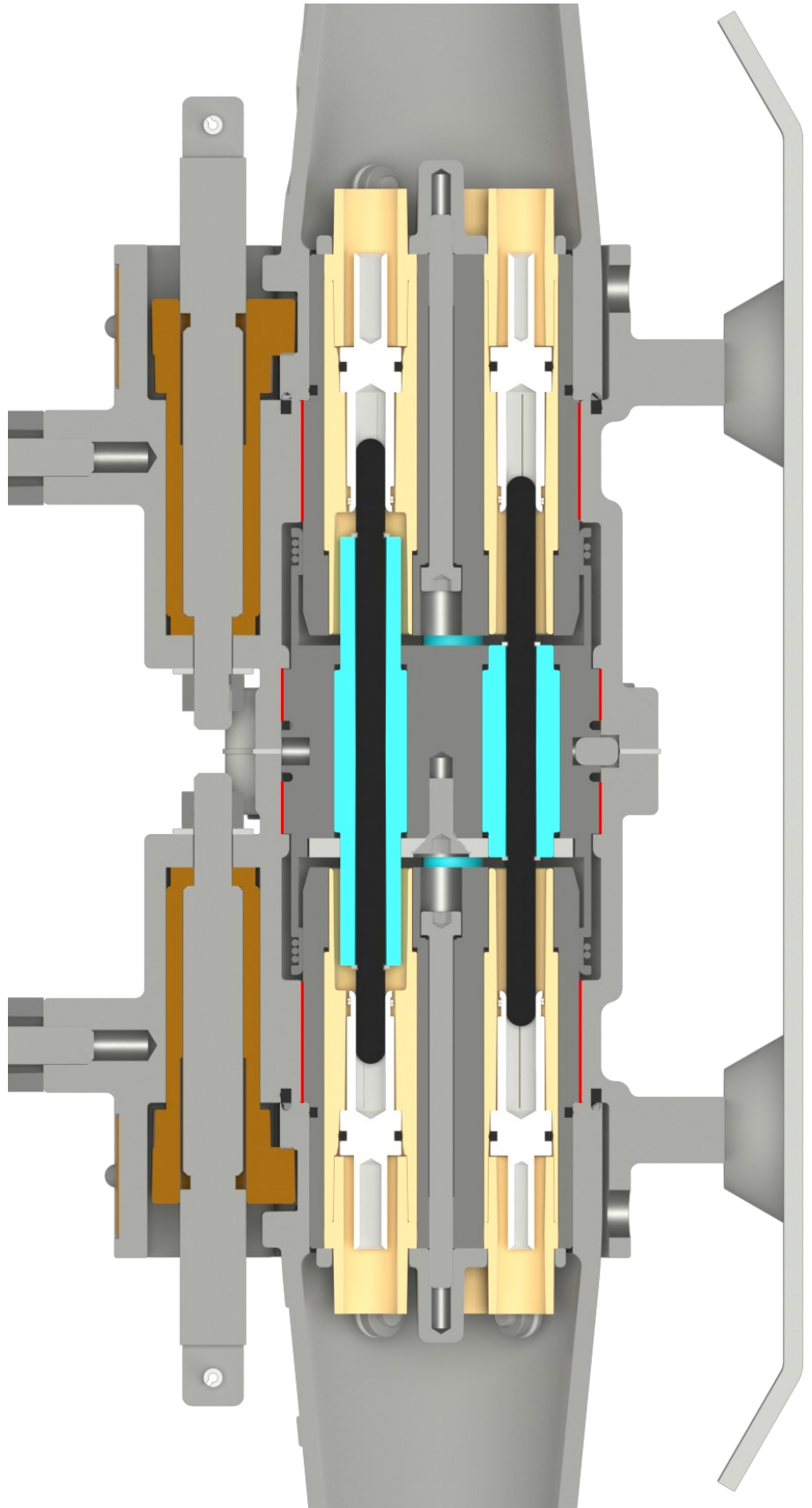
Flamepath Detail

660/1100V 60A/90A PES Back to Back

Legend	
	Flamepath
	Plug Insulators
	Receptacle Insulators
	Plug Contacts
	Receptacle Contacts
	Plug and Recep Housing
	Plug and Recep Cage

Flamepaths are not intended to be repaired. For further specifications on Flamepath joints, contact manufacturer for dimensions and tolerances.

Plug and Receptacle Disengagement Order
Pilot/Auxiliary – Phase Contacts – Scraping Earth – Flameproof Path.
 Pilot disengages first providing electrical isolation of phase during disconnection sequence.



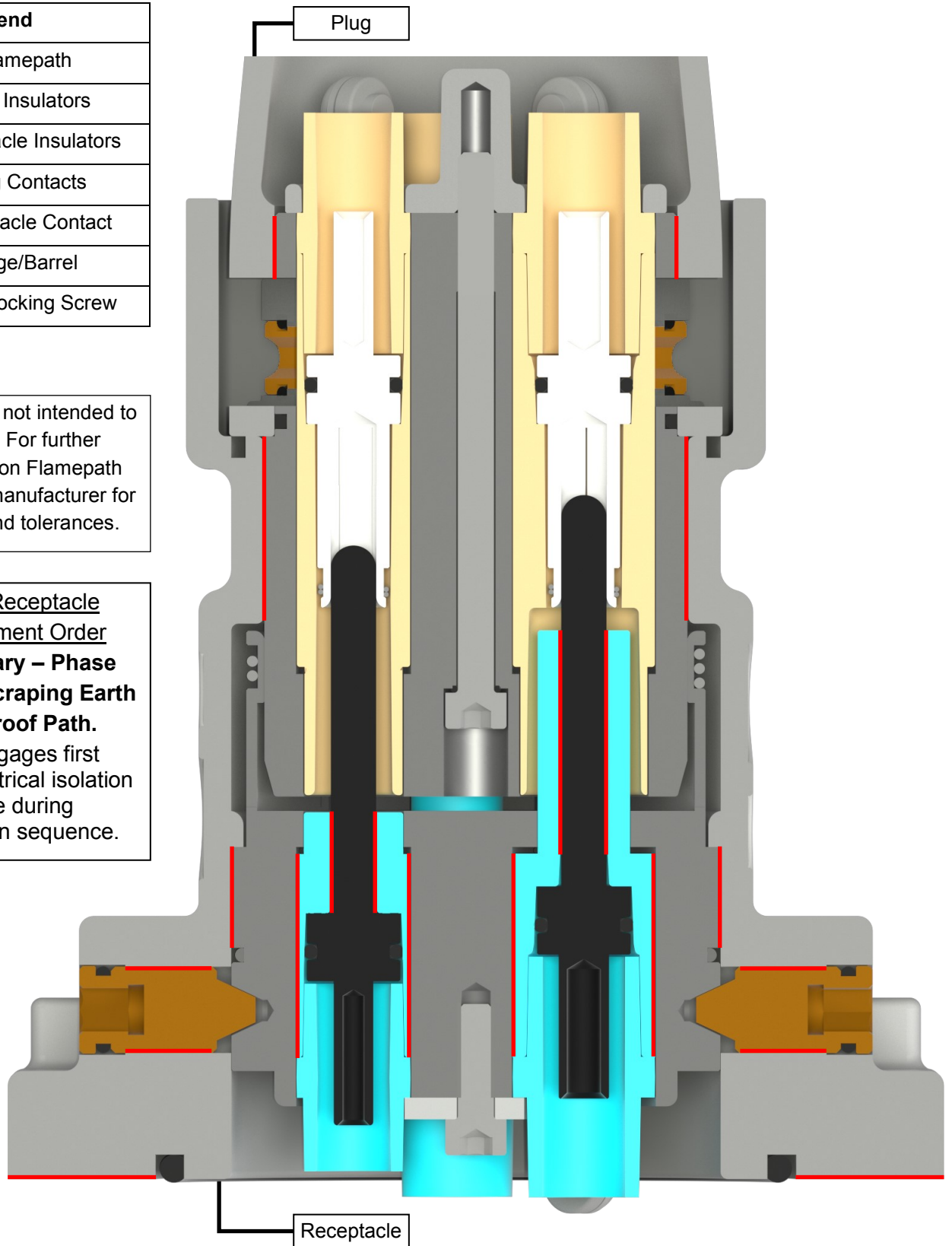
Flamepath Detail

660/1100V 60A/90A PES Plug And Receptacle

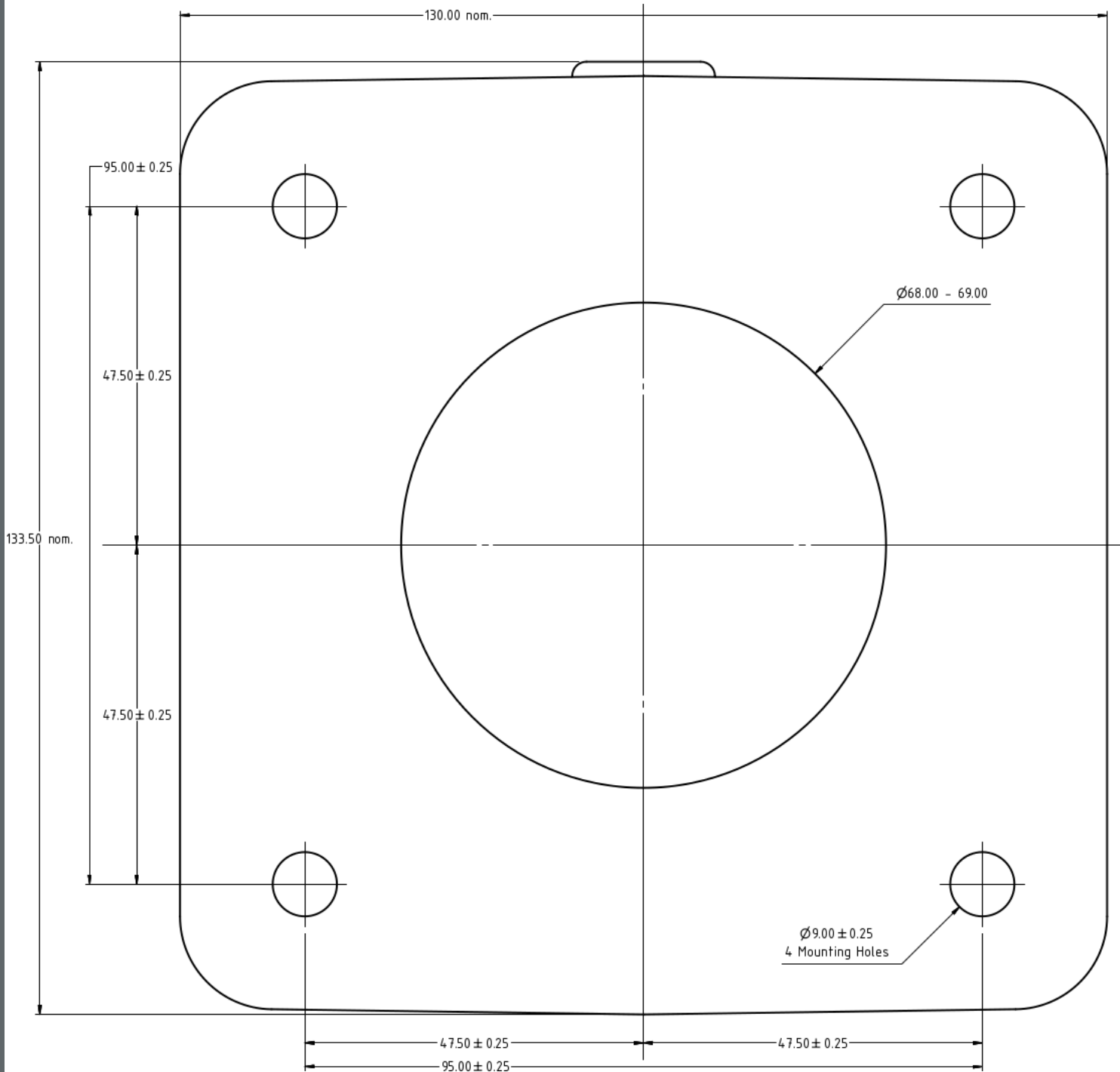
Legend	
	Flamepath
	Plug Insulators
	Receptacle Insulators
	Plug Contacts
	Receptacle Contact
	Cage/Barrel
	Cage Locking Screw

Flamepaths are not intended to be repaired. For further specifications on Flamepath joints, contact manufacturer for dimensions and tolerances.

Plug and Receptacle Disengagement Order
Pilot/Auxiliary – Phase Contacts – Scraping Earth – Flameproof Path.
 Pilot disengages first providing electrical isolation of phase during disconnection sequence.



PES Receptacle Profile for Mounting of 660/1100V 60A/90A PES Receptacle

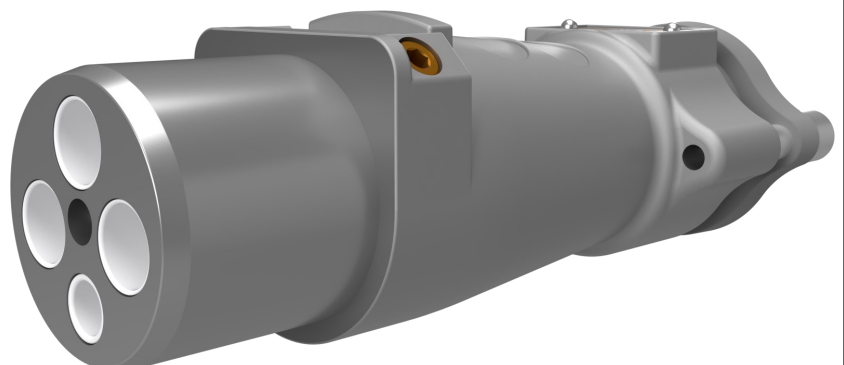


Maintenance And Safety

Plug and Receptacle System

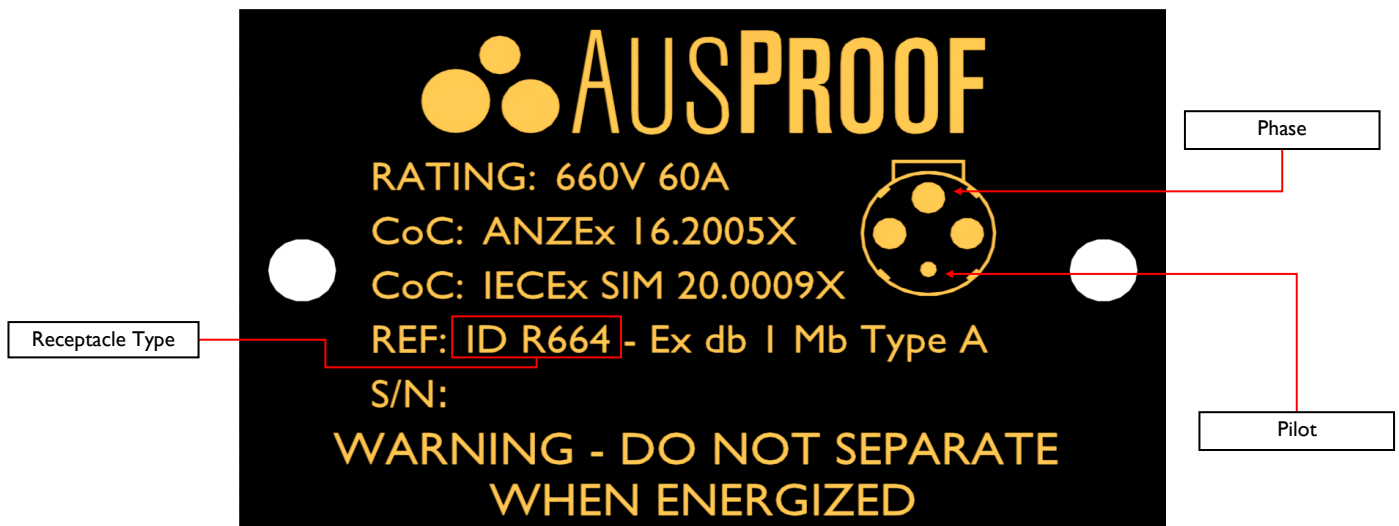
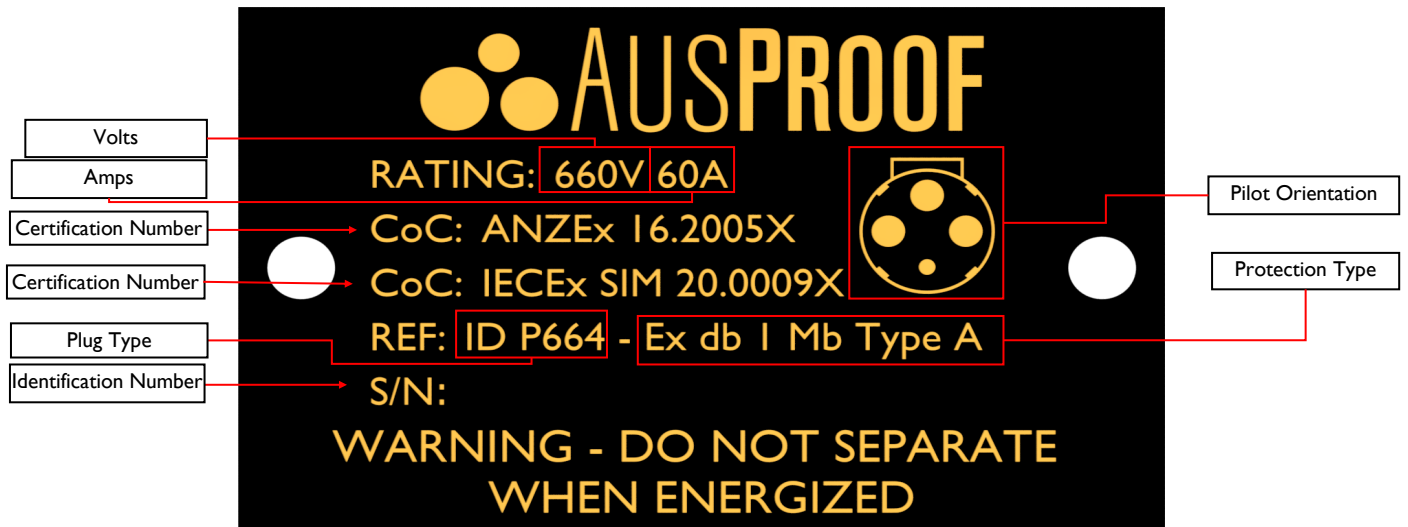
To ensure the safe operation of the plug and receptacles, personnel should be aware of minimal ongoing care and maintenance.

- When cables are not in use, ensure that protective covers have been fitted to provide adequate sealing against moisture and dust.
- The plugs and receptacles should never be used as a towing or anchor point.
- Inspect plug and receptacle to ensure no parts are missing, if parts are missing it is deemed unsafe for use.
- Inspect insertion end of plug and entry of receptacle to ensure there is no damage, as damage could compromise the flame path protection.
- Before connection inspect sealing ring in receptacle to ensure they are located correctly into groove.
- Before connection of plug and receptacle ensure connecting pins are not bent from previous misuse or incorrect assembly.
- Ensure plug has been inserted fully into receptacle before energizing.
- If witness marks are used, make sure they are brightly painted on the sheath, located where the cable enters the gland. This needs to be routinely inspected to check if a gap appears between the end of the gland and the witness mark. A gap may indicate that the cable has been under tension and that the termination in the coupler may have moved.
- The maximum surface temperature the plug will achieve when operating at full rated current at an ambient of 40 Deg Celsius will not exceed 85 Deg Celsius, which is therefore suitable for safe use in underground mines as it is less than 150 Deg Celsius



Ex Identification Labels

For Plug and Receptacle 60A Product



Notes

- The Rated Voltage For Pilot Pins Within The 60A and 150A Receptacles is Assessed as 160V
- Ensure Receptacle is Earthed to Ensure Induced Voltages Are Not Developed
- Plug and Receptacle Are Not To Be Separated When Energised

Standards Applied: AS/NZS 1299:2009, AS/NZS 60079.0:2019, AS/NZS 60079.1:2015

Ex Identification Labels

For Gland Bracket and Gland Mount Product

AUSPROOF

ID GBPES - Ex db I Mb Type A

CoC: ANZEx 16.2005X

CoC: IECEX SIM 20.0009X

S/N:

**WARNING - DO NOT SEPARATE
WHEN ENERGIZED**

Gland Type

Certification Number

Certification Number

Identification Number

AUSPROOF

ID GMPES - Ex db I Mb Type A

CoC: ANZEx 16.2005X

CoC: IECEX SIM 20.0009X

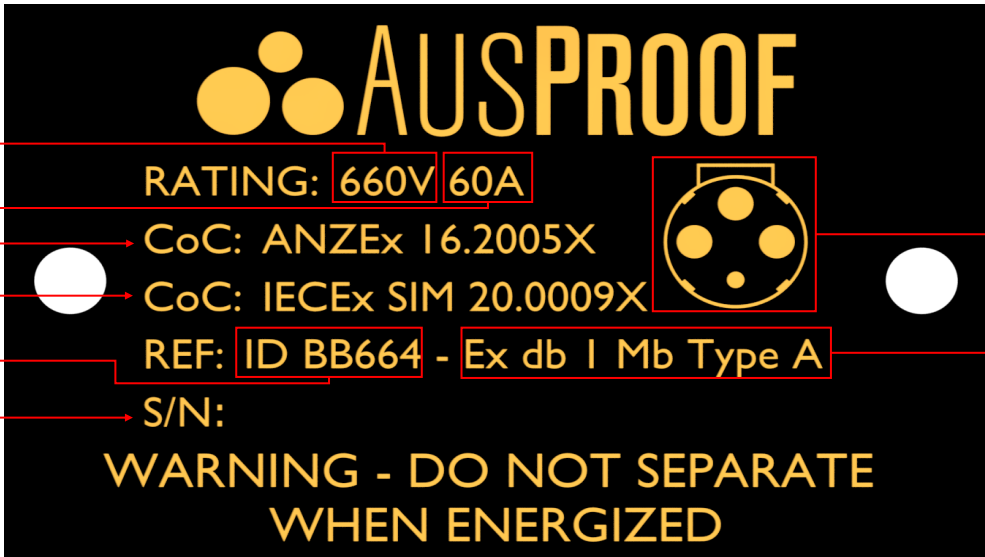
S/N:

**WARNING - DO NOT SEPARATE
WHEN ENERGIZED**

Gland Type

Ex Identification Labels

For Back to Back 60A Product



AUSPROOF

RATING: 660V 60A

CoC: ANZEx I6.2005X

CoC: IECEX SIM 20.0009X

REF: ID BB664 - Ex db I Mb Type A

S/N:

WARNING - DO NOT SEPARATE WHEN ENERGIZED

Labels and Callouts:

- Volts
- Amps
- Certification Number
- Certification Number
- Back to Back Receptacle Type
- Identification Number
- Pilot Orientation
- Protection Type



AUSPROOF

RATING: 1100V 60A

CoC: ANZEx I6.2005X

CoC: IECEX SIM 20.0009X

REF: ID BBI64 - Ex db I Mb Type A

S/N:

WARNING - DO NOT SEPARATE WHEN ENERGIZED

Labels and Callouts:

- Back to Back Receptacle Type
- Pilot
- Phase

Non-Ex Identification Labels

For Back to Back Flexible Rating 60A (90A) Product

AUSPROOF

RATING: 660V 90A

RANGE TYPE: 60A

REF: AS/NZS1299 ID BB664

S/N:

WARNING - DO NOT SEPARATE WHEN ENERGIZED

Labels and Callouts:

- Volts: 660V
- Amps: 90A
- Range Reference: 60A
- Standard Reference: AS/NZS1299
- Identification Number: BB664
- Pilot Orientation: Indicated by a dot in the receptacle diagram.
- Back to Back Receptacle Type: Indicated by the diagram.

AUSPROOF

RATING: 1100V 90A

RANGE TYPE: 60A

REF: AS/NZS1299 ID BB164

S/N:

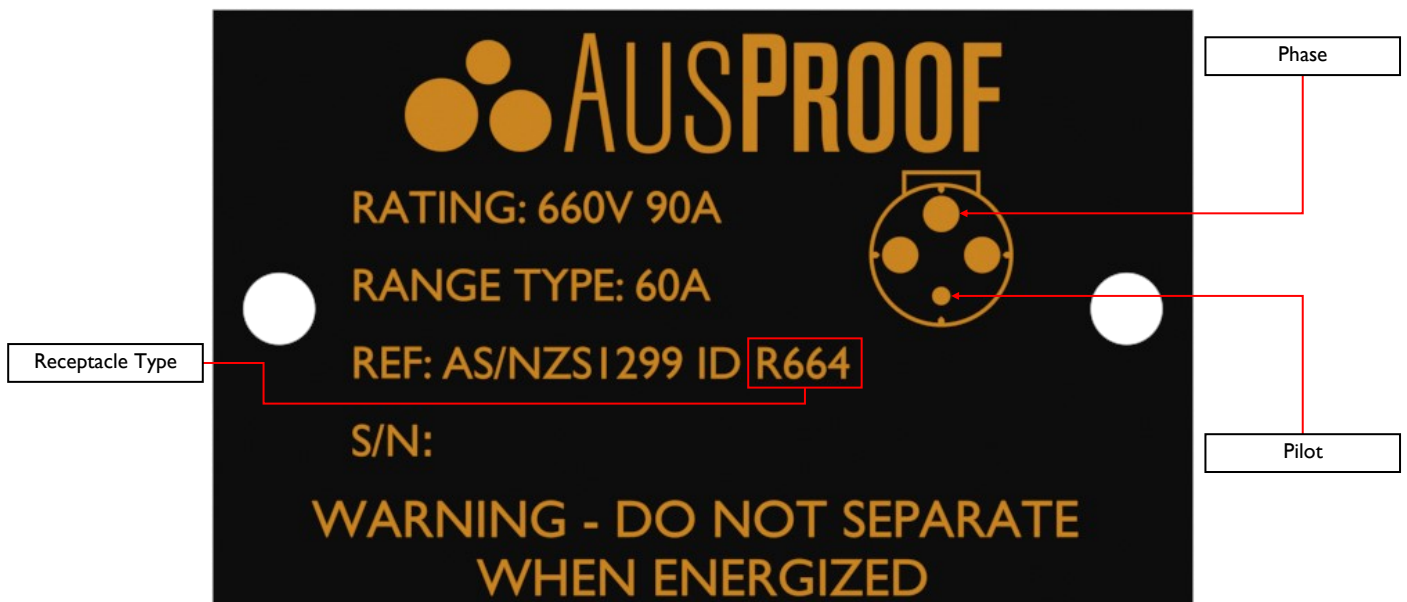
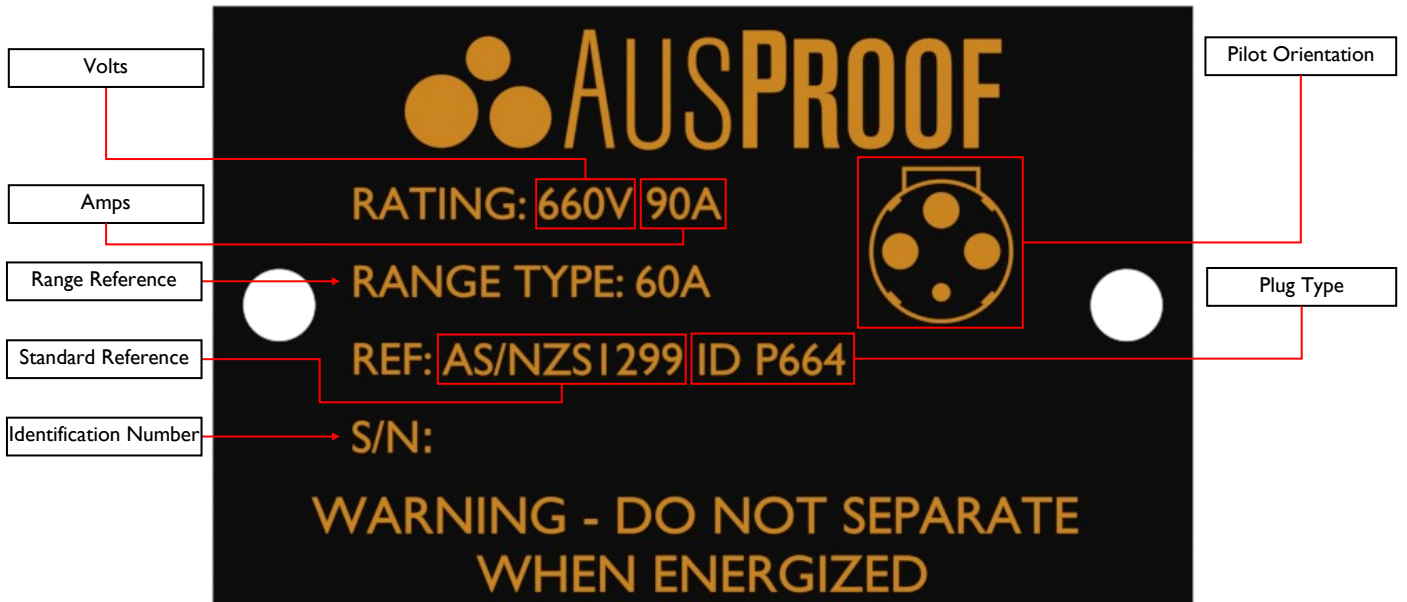
WARNING - DO NOT SEPARATE WHEN ENERGIZED

Labels and Callouts:

- Phase: Indicated by a dot in the receptacle diagram.
- Pilot: Indicated by a dot in the receptacle diagram.

Non-Ex Identification Labels

For Plug and Receptacle Flexible Rating 60A (90A) Product



Conditions of Use

- In accordance with clause 11.3 of AS/NZS 60079-1:2015, the following fastener property class shall apply;
 - ◆ Fixing Gland Bracket to Receptacle: Property Class \geq 4.6
 - ◆ Fixing Compression Clamp: Property Class \geq 12.9
 - ◆ Fixing Receptacle to Ex d Enclosure: Property Class \geq 4.6*

**Note: Specified Fastener Property Class to be \geq the Fastener Property Class specified for the Ex enclosure.*
- Flameproof Joints Are Not Intended to Be Repaired: For Further Specifications On Flamepath Joints Contact The Original Manufacturer For Information On The Dimensions Of The Flameproof Joints



6 Shona Avenue

Gladstone

Queensland 4680

Phone: +61 7 49784000

Facsimile: +61 7 49785685

Email: ausproof@ausproof.com.au

Website: <https://www.ausproof.com.au/>