



# 11kV 800 AMP 8 Bolt KA Style Coupler

118BKA - Range



*Pioneering the Difference.*

---

The AusProof high voltage coupler and adaptor system demonstrates state of the art technology with an innovative design which becomes homogeneous with the cable when terminated. The design offers a continued earth shield, segregating the three phases and maintains the same Symmetrical radial distribution of voltage stress, as in the cable design. This eliminates the risk of a phase to phase fault.

The face profile and silicon rubber connector expels all air when connected, eliminating condensation, dust and corona. The type tests performed were all based on high voltage, cable specification requirements, and the results prove; that the coupler is as good as the cable.

### **Electrical Type Test Results**

#### **11kV 800A Coupler**

##### **Through Fault Current**

20kA for 0.3 Seconds  
20kA for 0.3 Seconds  
20kA for 1.0 Seconds  
At 10 Minutes Intervals

##### **A/C High Voltage Withstand**

24kV for 1 Minute  
50kV for 1 Minute  
35kV for 6 Hours

##### **Impulse Voltage**

95kV - 10 POS and 10 NEG  
110kV - 10 POS and 10 NEG

##### **Partial Discharge**

Prior to 6 Hour:  
High Voltage Withstand: 10pC  
Post 6 Hour:  
High Voltage Withstand: 0.6pC

# High Voltage Cable Coupler System

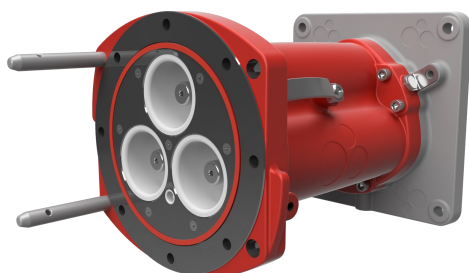
## Technical Guide



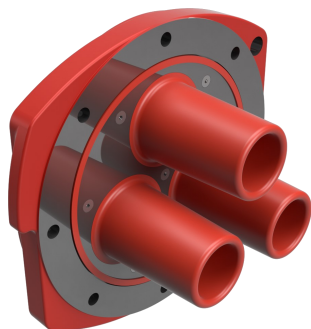
**Stock No:** (See Page 4 Breakdown)  
**Description:** Half Coupler for Trailing Cable  
**Rating:** 11kV 800A  
**Material:** Aluminium  
**LOA:** 665mm  
**Mass:** 16kg  
**Volume:** 4 litres



**Stock No:** (See Page 4 Breakdown)  
**Description:** Half Coupler for Armoured Cable  
**Rating:** 11kV 800A  
**Material:** Aluminium  
**LOA:** 665mm  
**Mass:** 16kg  
**Volume:** 4 litres



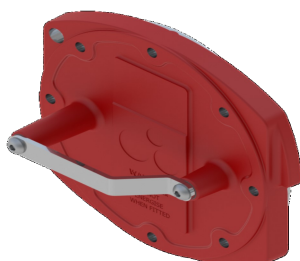
**Stock No:** (See Page 4 Breakdown)  
**Description:** KA Adaptor  
**Rating:** 11kV Adaptor  
**Material:** Aluminium  
**LOA:** 480mm  
**Mass:** 16kg  
**Volume:** 4 litres



**Stock No:** RS1775  
**Description:** Insulated End Cover  
**Rating:** 11kV  
**Material:** Aluminium  
**Mass:** 5kg



**Stock No:** 2808  
**Description:** Cast Protection Cover No Handle/Boss  
**Rating:** 11kV 800A



**Stock No:** RS1776  
**Description:** Cast Protection Cover  
**Rating:** 11kV  
**Material:** Aluminium  
**Mass:** 3kg



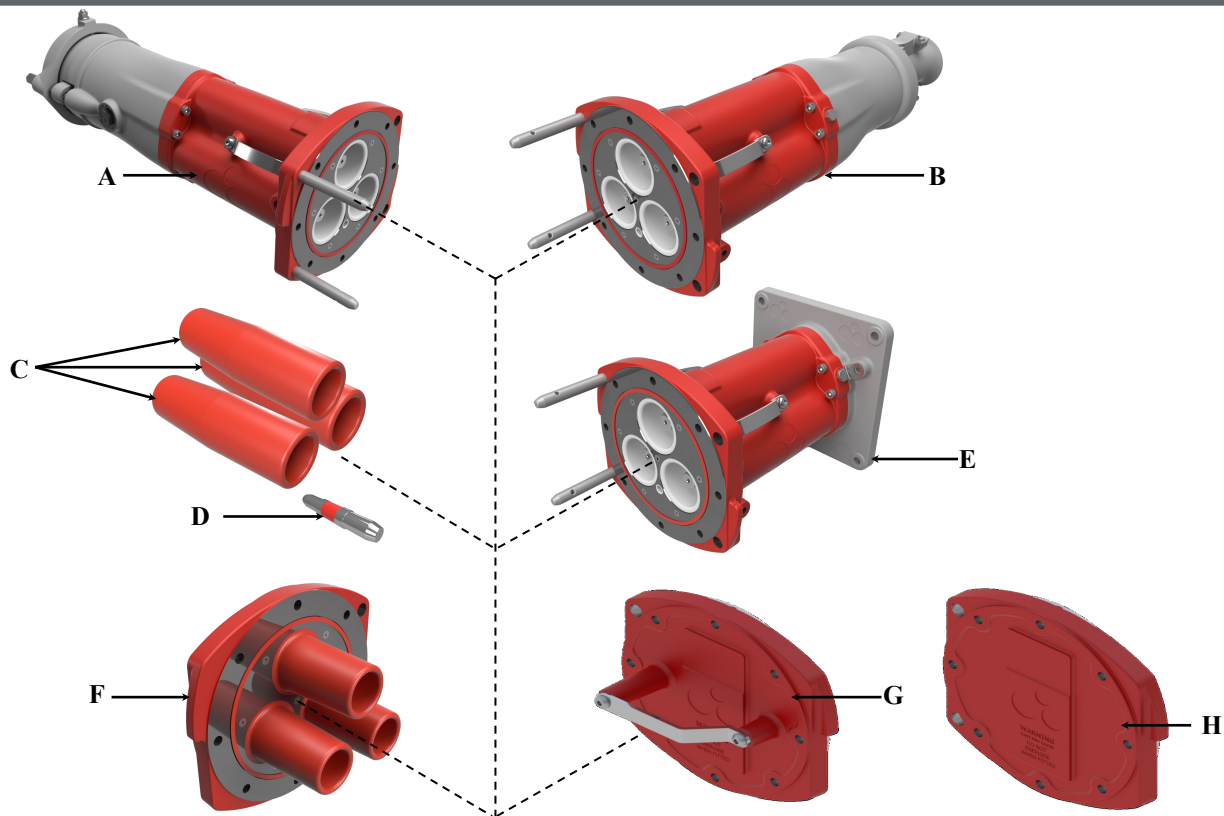
**Stock No:** RS112 (3 required per joint)  
**Description:** Phase Connectors  
**Rating:** 11kV 800A



**Stock No:** RS113  
**Description:** Pilot Connector

# High Voltage Cable Coupler System

Model No Selection Guide - 11kV 800A

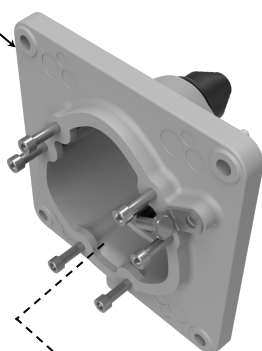


	Description	Stock No.	Page
<b>A</b>	Half Coupler - Armoured Cable	-	4
<b>B</b>	Half Coupler - Unarmoured Cable	-	4
<b>C</b>	800x800 Phase Connectors	RS112	2
<b>D</b>	Pilot Connector	RS113	2
<b>E</b>	Adaptor	RS1773	8
<b>F</b>	Insulated End Cover	RS1775	9
<b>G</b>	Cast Protection Cover	RS1776	10
<b>H</b>	Cast Protection Cover No Handle	2808	10

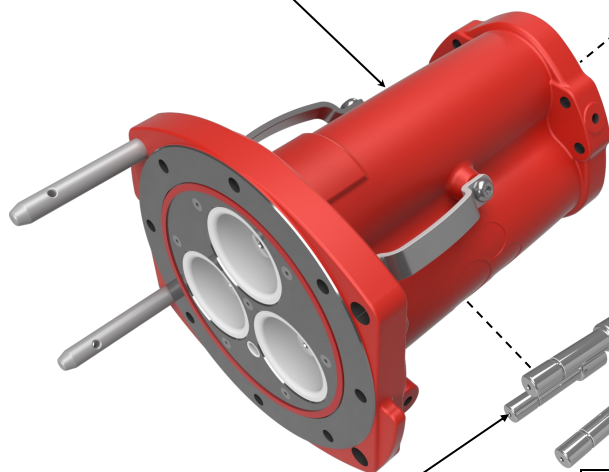
# High Voltage Cable Coupler System

Stock Selection Guide - 11kV 800A

**Gear Mount Flange**  
Stock No: RS1773



**Coupler**  
Stock No: RS1322

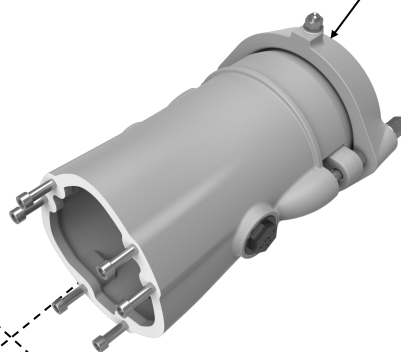


Soldered Contact (Set of 3)	
Conductor	Stock No
35mm sq	RS067
50mm sq	RS068
70mm sq	RS069
95mm sq	RS070
120mm sq	RS071
150mm sq	RS072
185mm sq	RS073
240mm sq	RS074
300mm sq	RS075

Crimpable Contact (Set of 3)	
Conductor	Stock No
25mm sq	RS866
35mm sq	RS076
50mm sq	RS077
70mm sq	RS078
95mm sq	RS079
120mm sq	RS080
150mm sq	RS081
185mm sq	RS082
240mm sq	RS083
300mm sq	RS084

**KAN SWA Cable Gland**

Cable OD Under Armour	Stock No	Cable OD Under Armour	Stock No
105 - 110mm	RS1343	70 - 75mm	RS1350
100 - 105mm	RS1344	65 - 70mm	RS1351
95 - 100mm	RS1345	60 - 65mm	RS1352
90 - 95mm	RS1346	55 - 60mm	RS1353
85 - 90mm	RS1347	50 - 55mm	RS1354
80 - 85mm	RS1348	45 - 50mm	RS1323
75 - 80mm	RS1349	40 - 45mm	RS1355



**KA Trailing Cable Gland**

Cable OD	Stock No	Cable OD	Stock No
117mm sq	RS1867	80mm	RS1875
115mm sq	RS1868	75mm	RS1876
110mm sq	RS1869	70mm	RS1877
105mm sq	RS1870	65mm	RS1878
100mm sq	RS1871	60mm	RS1879
95mm sq	RS1872	55mm	RS1880
90mm sq	RS1873	50mm	RS1881
85mm sq	RS1874	45mm	RS1882



# High Voltage Cable Coupler System

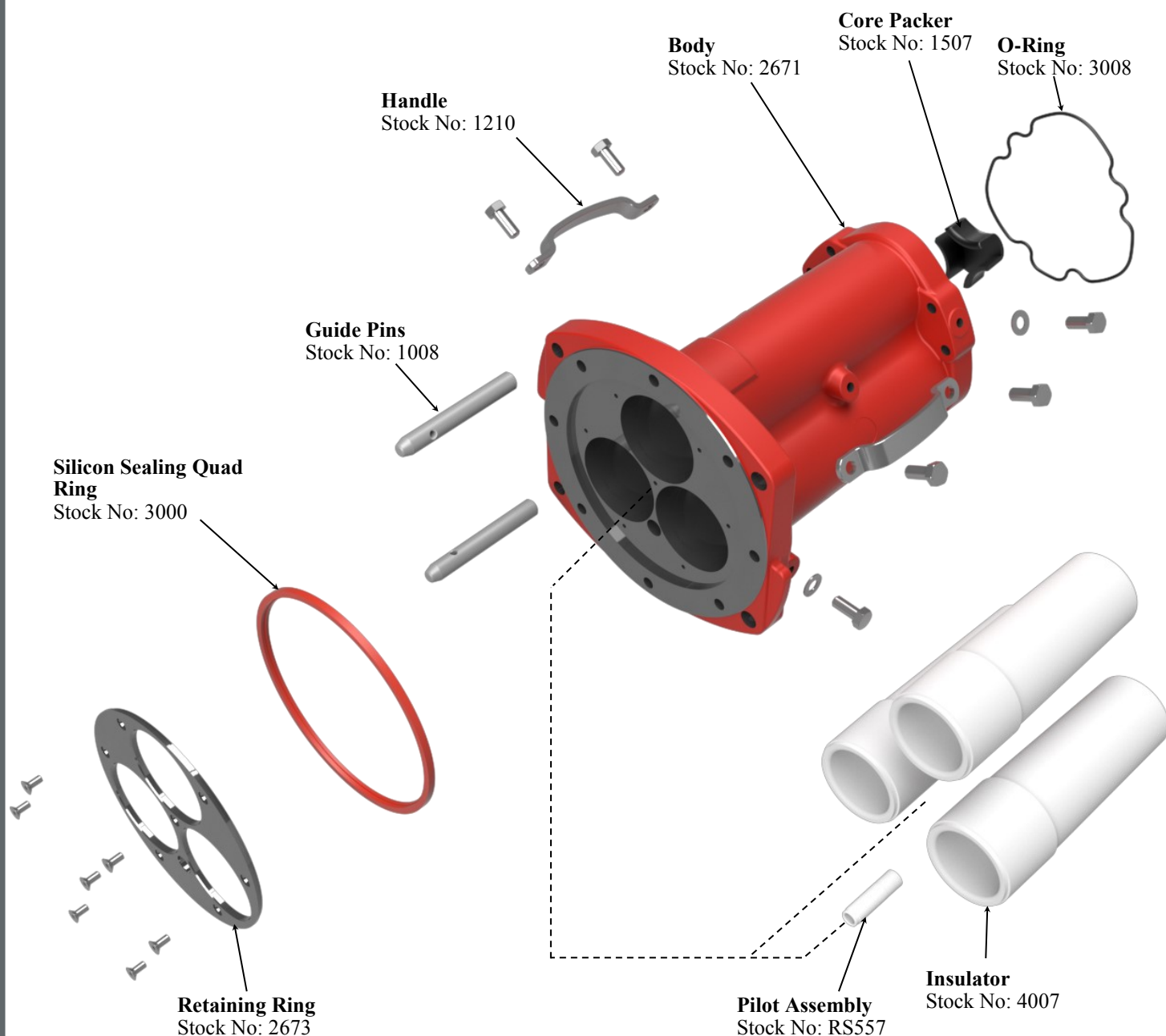
## Body Assembly

Stock No: RS1322 - 11kV KA 8 Bolt Body

Amps: 800                      Volume: 4 Litres

Volts: 11000                LOA: 840mm

Material: Aluminium



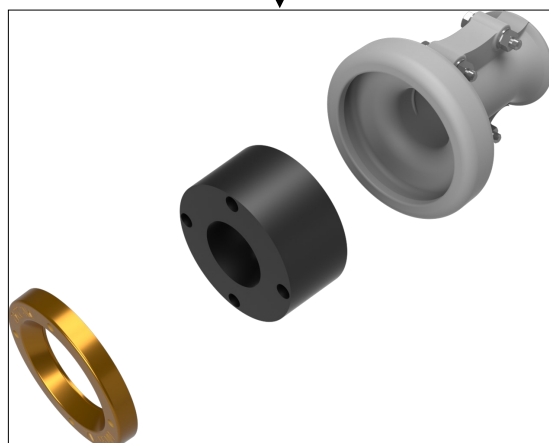
# High Voltage Cable Coupler System

## Unarmoured Gland Assembly

**KA Housing Small**  
Stock No: RS257

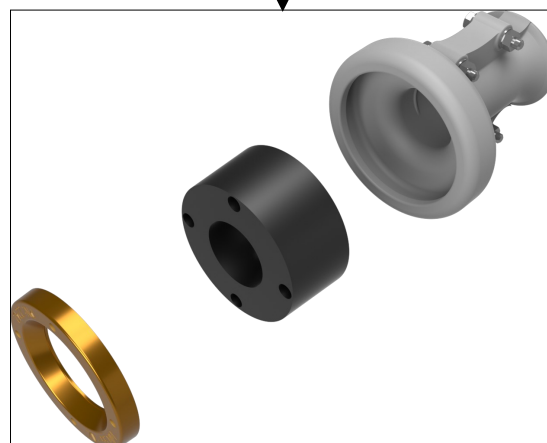
**KA Housing Large**  
Stock No: RS258

**Earth Brackets**  
Stock No: RS899



**Alum Unarmoured Compression Clamp Kit**

Cable OD	Stock No
90mm	RS266
85mm	RS265
80mm	RS264
75mm	RS263
70mm	RS262
65mm	RS261
60mm	RS260
55mm	RS259
50mm	RS478
45mm	RS479



**Alum Unarmoured Compression Clamp Kit**

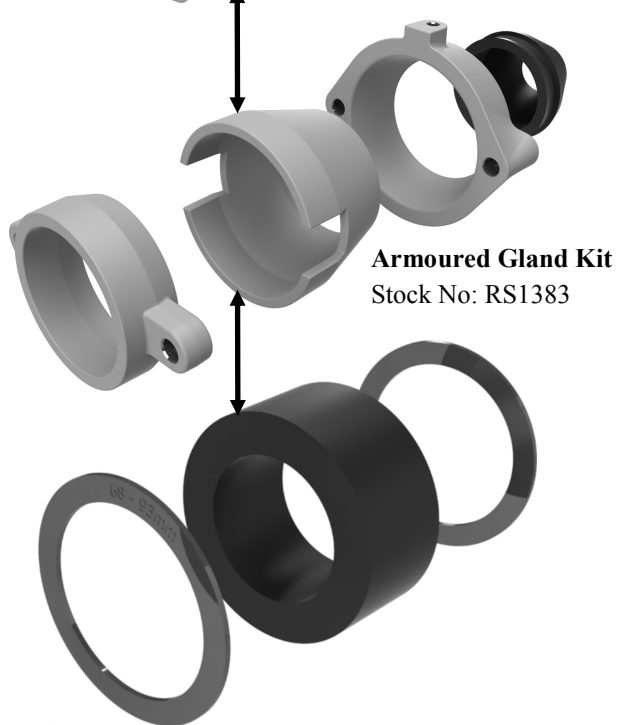
Cable OD	Stock No
95mm	RS267
100mm	RS268
105mm	RS269
110mm	RS270
115mm	RS271
117mm	RS272
125mm	RS916

# High Voltage Cable Coupler System

## Armoured Gland Assembly



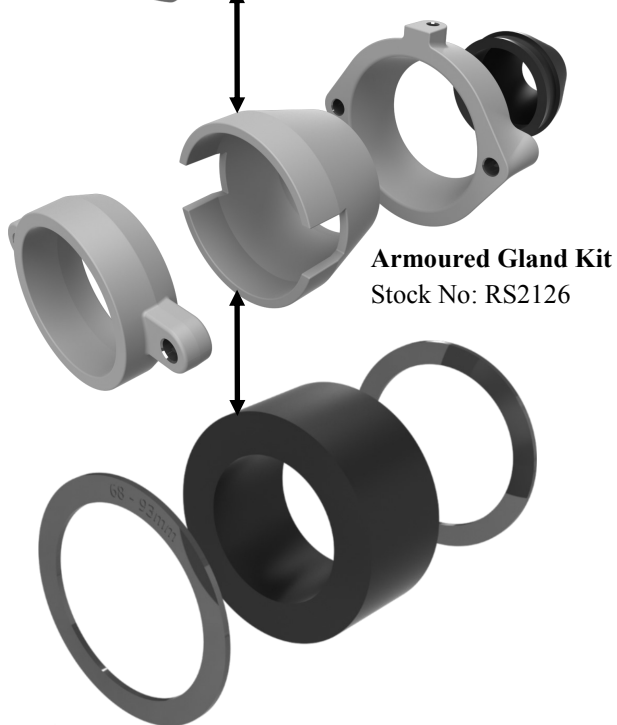
**KANS—Small Housing**  
Stock No: RS1342



**Armoured Gland Kit**  
Stock No: RS1383



**KANL—Large Housing**  
Stock No: RS1833



**Armoured Gland Kit**  
Stock No: RS2126



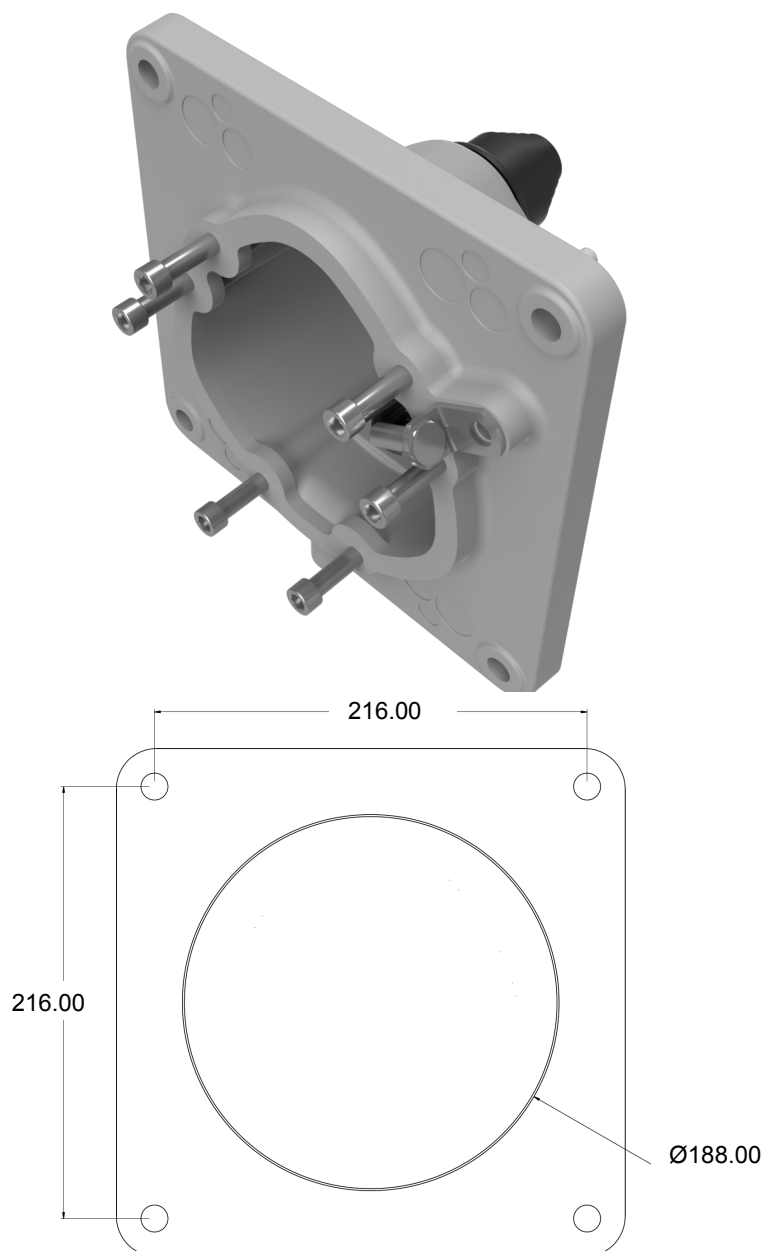
# Panel Mount Adaptor Body Assembly

Stock No: RS1773 - 11kV KA Adaptor Flange

Mass: -

Volts: 11000

Material: Aluminium



# Insulated End Cover Assembly

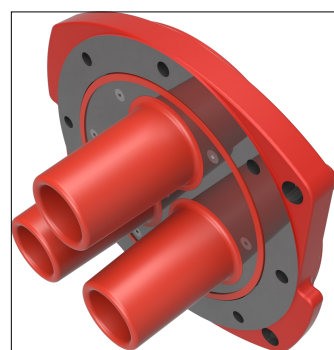
Accessories

Stock No: RS1775 - 11kV KA 8B Insul. End Cover

Mass: -

Volts: 11000

Material: Aluminium



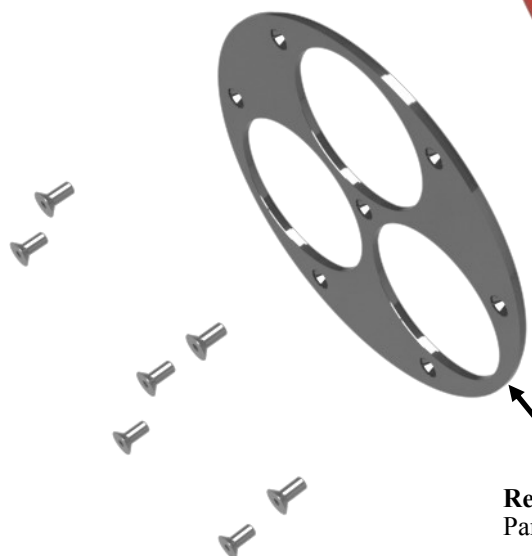
**End Cover**  
Part No: 2512

**End Cover Plug**  
Part No: 3001

**Sealing Ring**  
Part No: 3000



**Retaining Ring**  
Part No: 2513

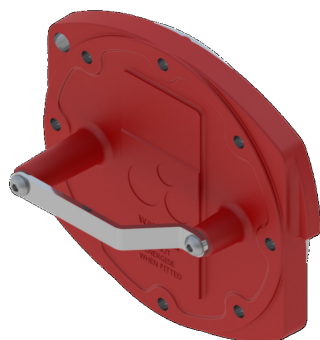


Stock No: 2511 - 11kV KA 8B Cast Pro Cover

Mass: -

Volts: 11000

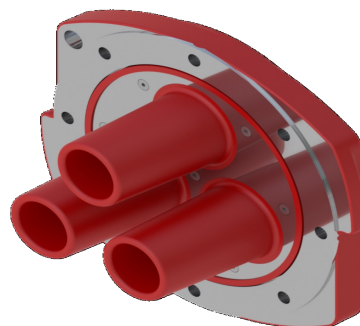
Material: Aluminium



**Cast Pro Cover**  
Part No: RS1776

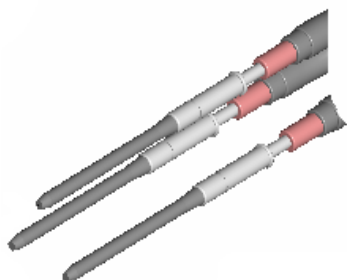


**Cast Pro Cover No Handle**  
Part No: 2808



**Insul. End Cover**  
Part No: RS1775

### RS178



**Phase Guide Stick Set for Assembly**  
3 Included

### RS177



**Slide Hammer**

### Coupler Tool Kit (All Voltages)

Part No. RS284



1246 (Spanners) x 2

RS325 (Coupling Tool) x 1

RS177 (Slide Hammer) x 1

1278 (High Voltage Cleaning tissues) x 15

1274 (Tool Box) x 1

# Termination Kits for Unarmoured Cable

## 11kV Termination Kit Large 24mm-48mm

### RS323

(To suit core outer diameter 24mm-48mm)



4L Compound



3 x QT5672



1 x CC2



1 x I3 Tape

## 11kV Termination Kit Small 16mm-28.5mm

### RS406

(To suit core outer diameter 16mm-28.5mm)



4L Compound



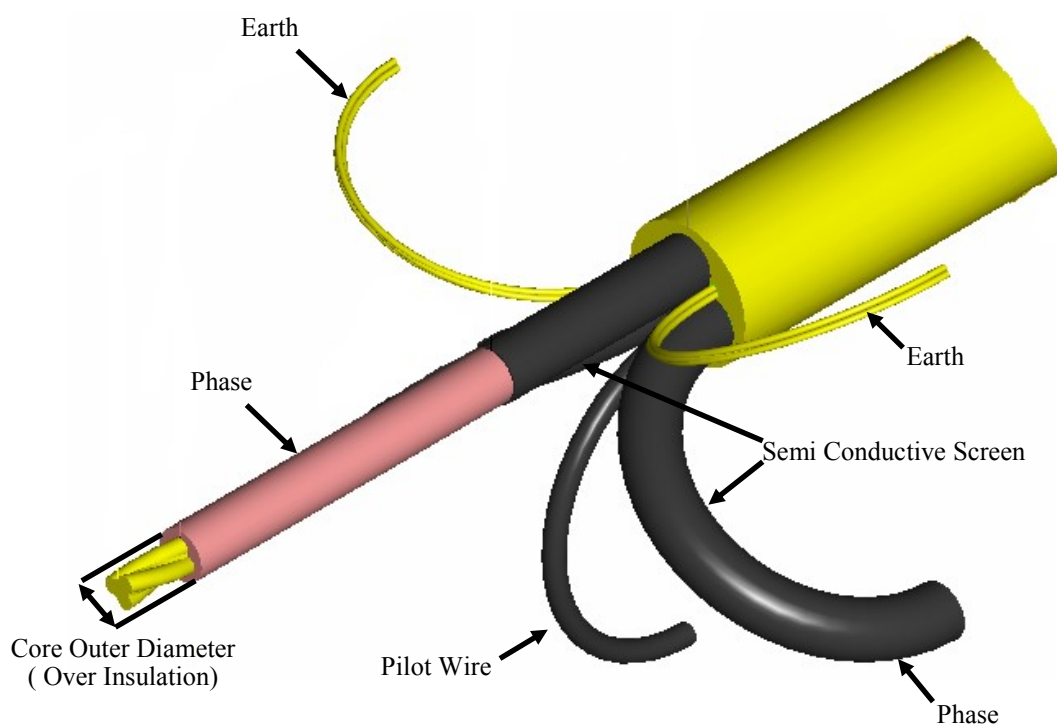
3 x QT5672



1 x CC2

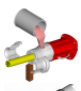







1 x I3 Tape

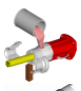







# Termination Kits for Armoured Cable

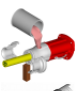





## 11kV SWA Termination Kit Large 24mm-48mm

RS552	
(To suit core outer diameter 24mm-48mm)	
	4L Compound
	QT5672 x 3
	CC2 x 1
	I3 Tape x 1
	Heat Shrink x 1
	Steel Cable Ties x 2





## 11kV SWA Termination Kit Small 16mm-28.5mm

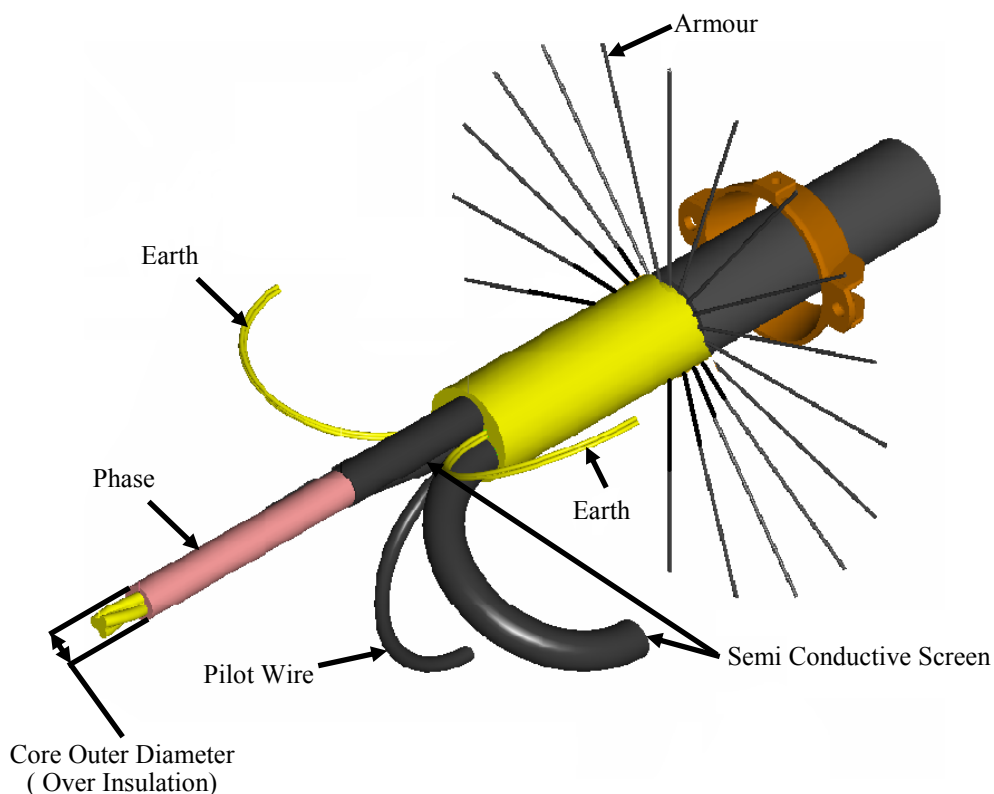
RS551	
(To suit core outer diameter 16mm-28.5mm)	
	4L Compound
	QT5671 x 3
	CC2 x 1
	I3 Tape x 1
	Heat Shrink x 1
	Steel Cable Ties x 2

## 11kV SWA Termination Kit Extra Small 11mm-17mm

RS917	
(To suit core outer diameter 11mm-17mm)	
	4L Compound
	QT5662 x 3
	CC2 x 1
	I3 Tape x 1
	Heat Shrink x 1
	Steel Cable Ties x 2

## 11kV Termination Kit PILC 24mm-48mm

RS687	
	4L Compound
	23 Tape x 2
	Heat Shrink x 1
	Steel Cable Ties x 2





# Open Cut Bolted Coupler Skid for 11kV

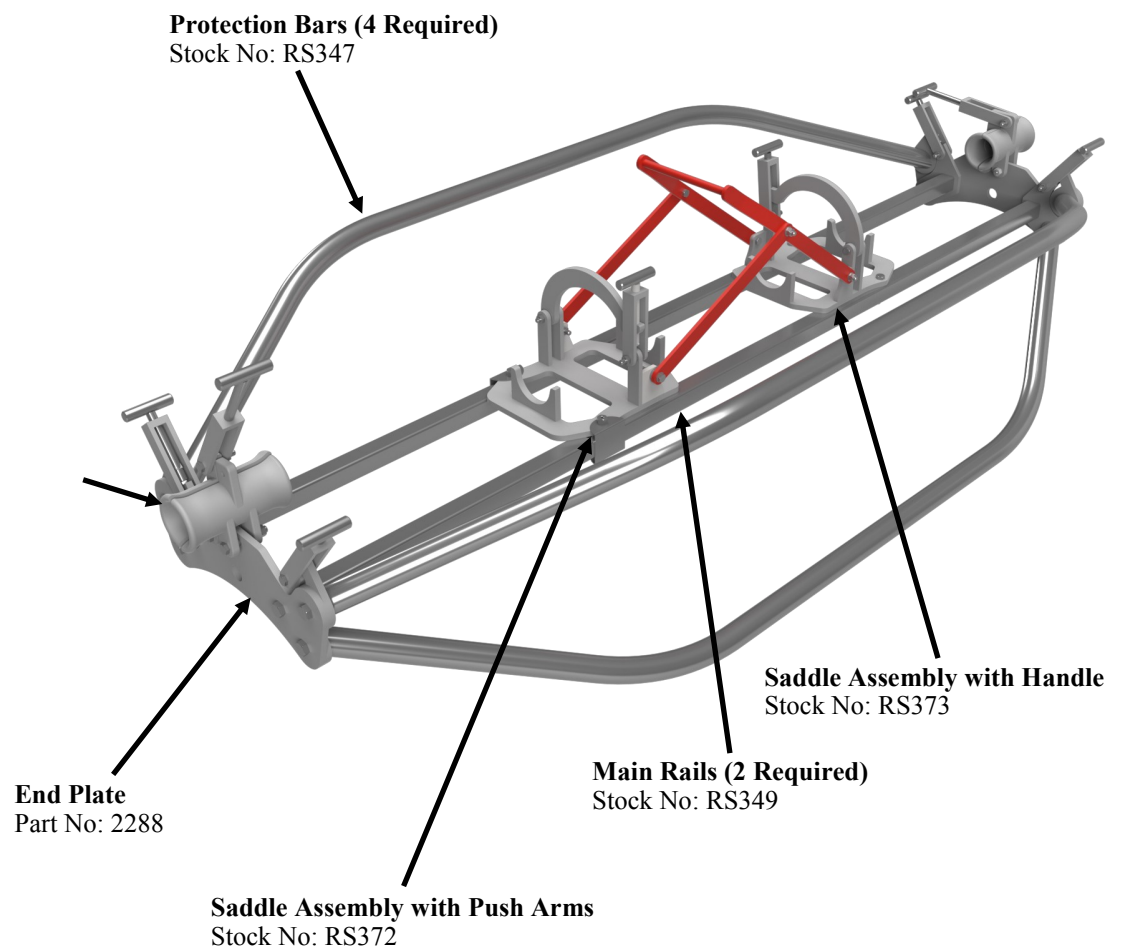
Stock No: RS188 - 11kV 8 Bolt Standard Skid

Mass: -

Volts: - 11000

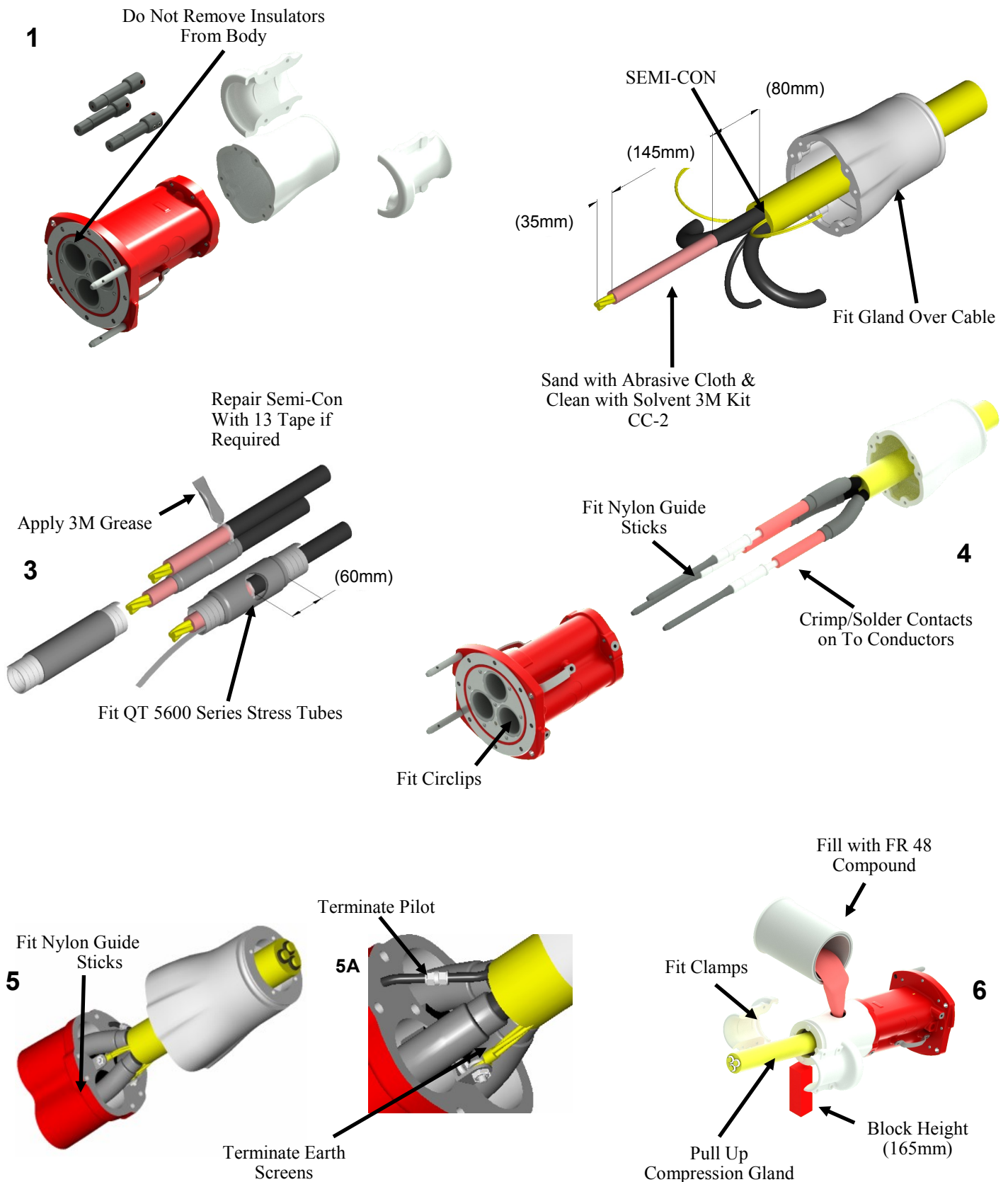
Material: - Aluminium

Cable Clamp	
ID Sizes	Stock No
120mm	RS326
115mm	RS327
110mm	RS328
105mm	RS329
100mm	RS330
95mm	RS331
90mm	RS332
85mm	RS333
80mm	RS334
75mm	RS335
70mm	RS336
65mm	RS337
60mm	RS338
55mm	RS339
50mm	RS480
45mm	RS481



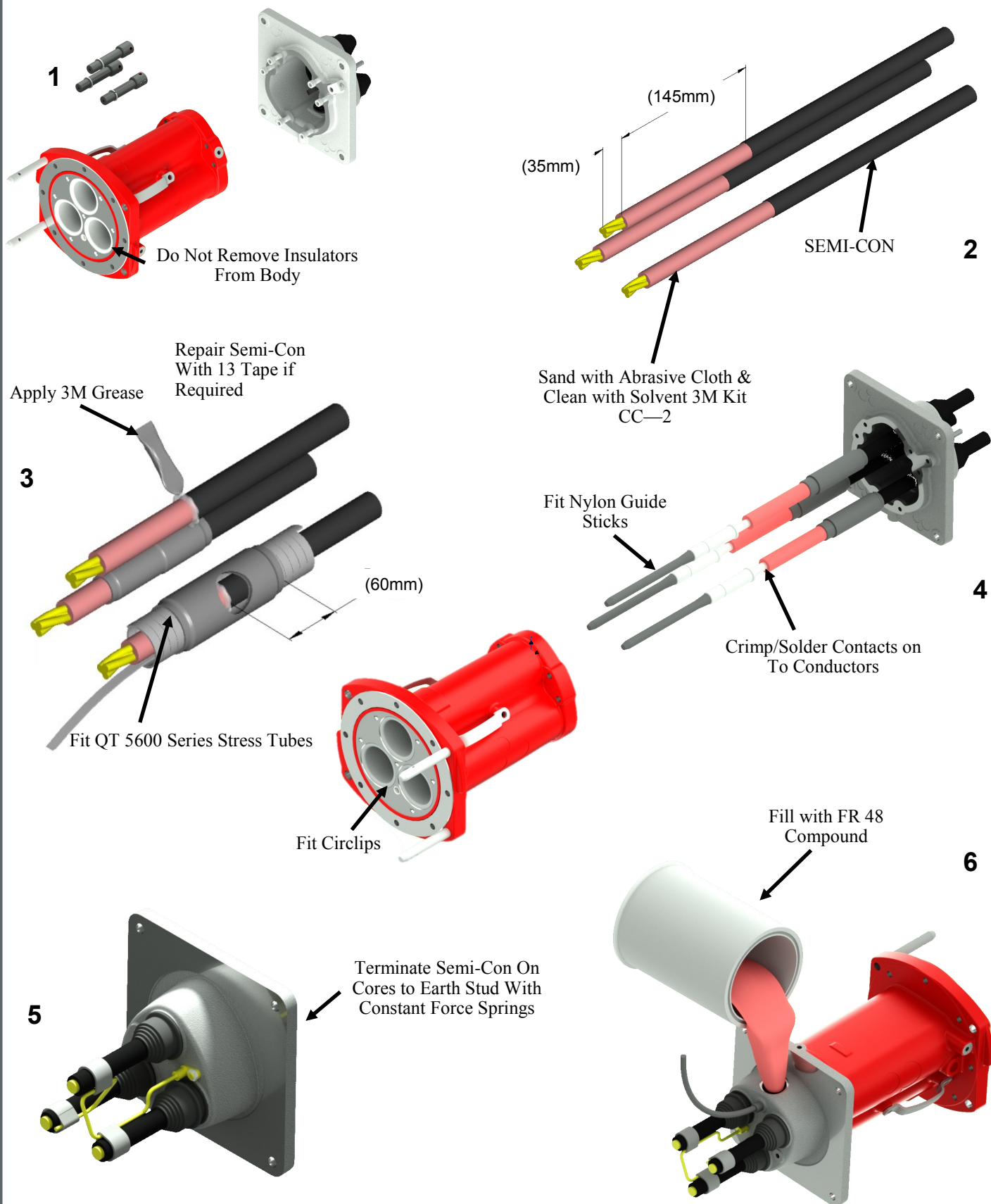
## KA 11kV 800A Unarmoured

### Termination Procedure



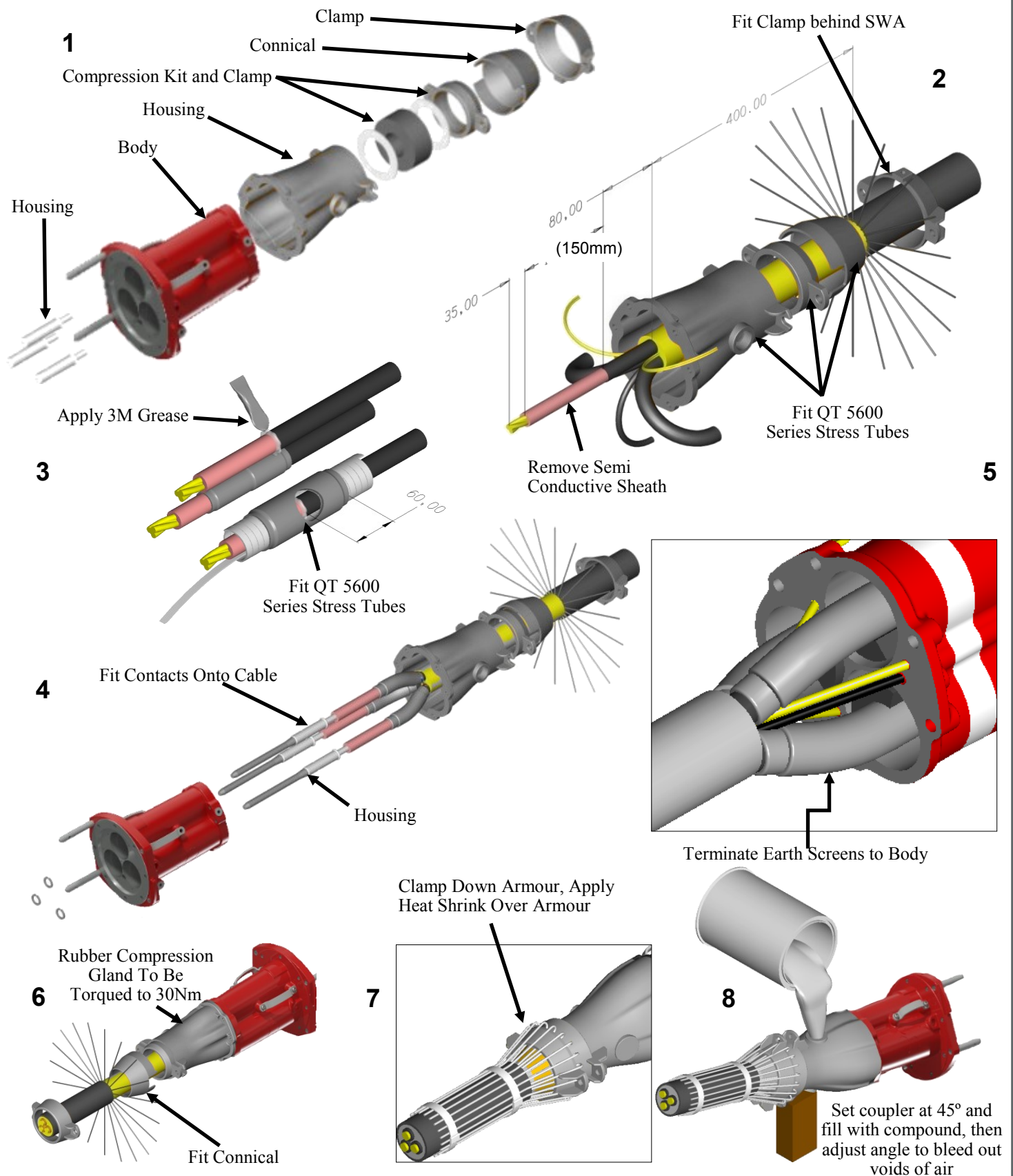
# KA 11kV 800A Gear Mount Adaptor

## Termination Procedure

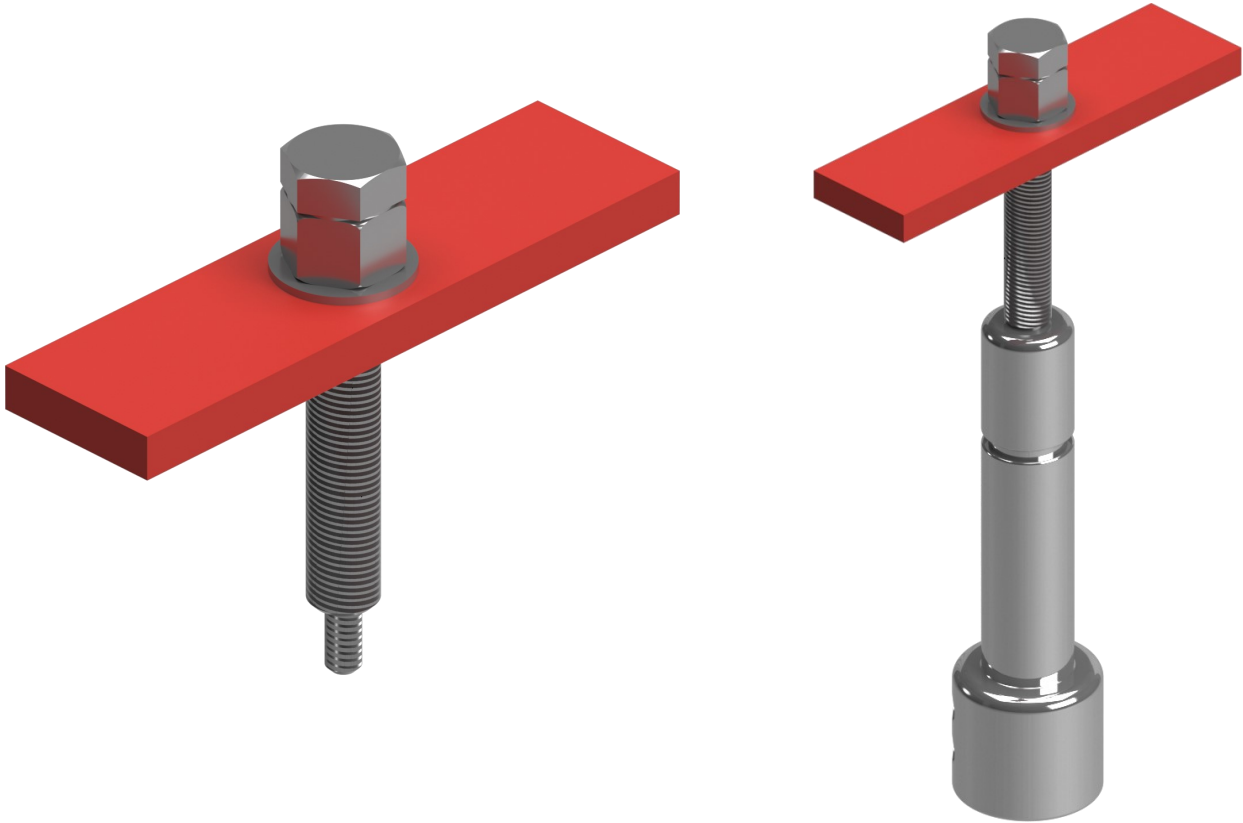


## KA 11kV 800A Armoured

### Termination Procedure



## Contact Pulling Tool Operation



### Observation

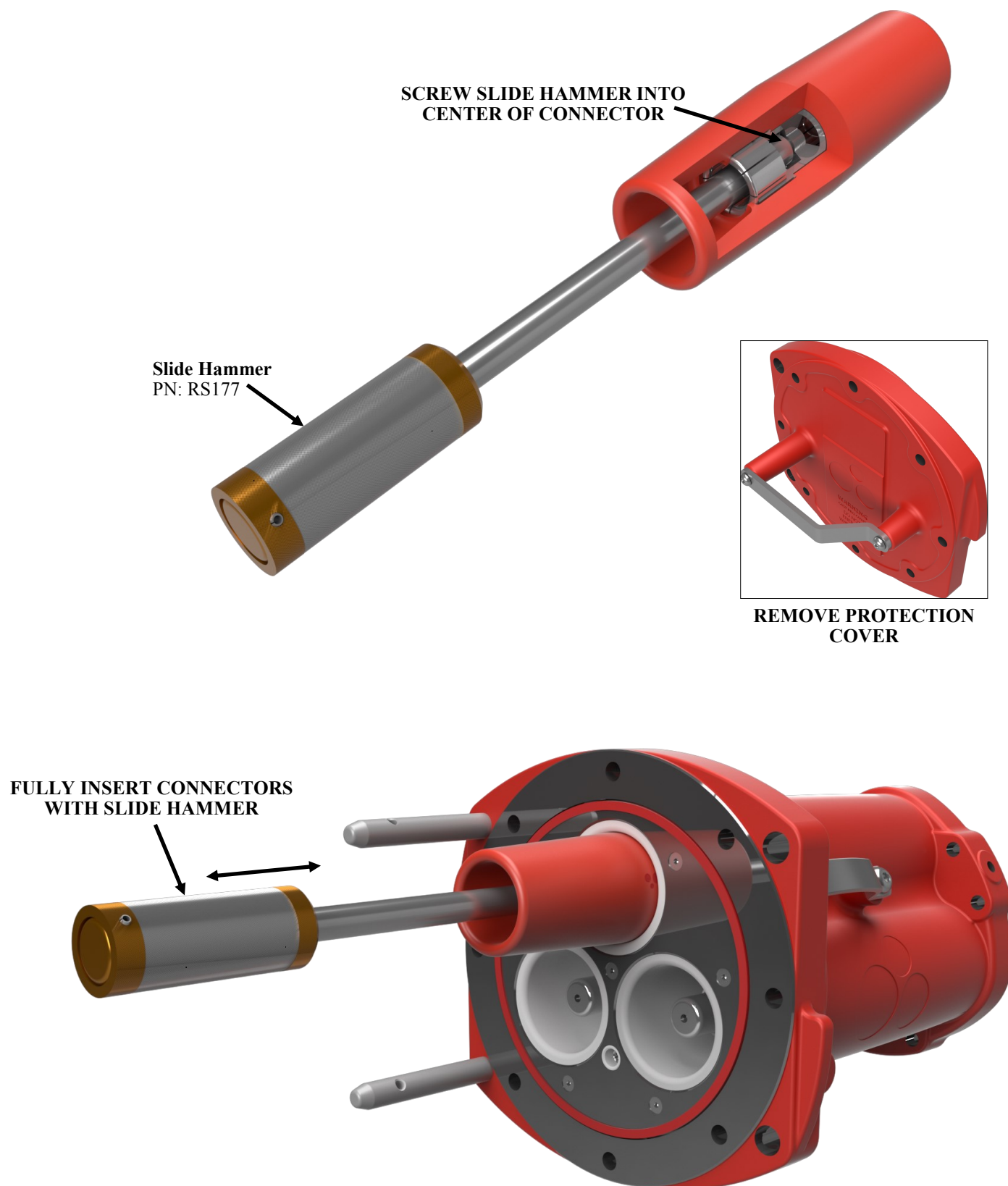
Inspect the front end of the coupler or adaptor, paying special note to the condition of the circlip on each phase. Each circlip should be sitting evenly on the contact. If more of the circlip protrudes out of one side, then the circlip needs to be replaced.

If the circlip needs to be adjusted or replaced, the following will need to be performed

- Ensure power is not connected.
- For a coupler, loosen the clamp on the gland to slightly release the grip on the cable.
- Clean out threaded hole in end of contact with air or cloth
- Place a new circlip over the end of the contact.
- Screw the bolt of the assembled pulling tool into the end of the contact
- Push the steel plate up against the face of the coupler.
- Tighten the nut and washer up to the steel plate.
- Using a spanner, tighten the nut against the steel plate to pull the contact back into place.
- Whilst in this position, replace the circlip.
- After all three contacts are satisfactory, retighten the gland.



## Inserting Connectors and Coupling Operation



# Offsite Checks & Testing Procedures

## For 11kV Aluminium Coupler System

To compliment existing procedures and practices currently existing in cable repair workshop, the following is designed to be completed as a minimum to ensure the safe and long operation of the AusProof coupler system

### **Routine Checks and Inspection**

- When cables are not in use or stored, ensure that a cast protection end cover is fitted that provides adequate sealing against moisture.
- Ensure that witness marks are brightly painted on the sheath, located where the cable enters the gland. This needs to be routinely inspected to check if a gap appears between the end of the gland and the witness mark.
  - A gap may indicate that the cable has been under tension and that the termination in the coupler may have moved.
- Inspect the male pin in the coupler for obvious signs of damage. Also inspect the location of the nylon locking circlip to ensure that it is evenly fitted onto the contact.
  - If the circlip appears dislocated or damaged then repairs are necessary. This event indicates that the termination in the coupler has been under tension as a result of handling.
- Ensure the tension on the gland housing compression ring is maintained. This process requires that the four compression ring bolts are tensioned.
- Check silicon seals are clean and are fully intact.
- Thoroughly clean the insulators and face of the coupler with suitably approved solvent.

20



**6 Shona Avenue**

**Gladstone**

**Queensland 4680**

**Phone: +61 7 49784000**

**Facsimile: +61 7 49785685**